

District I
1625 N. French Dr., Hobbs, NM 88240
Phone: (575) 393-6161 Fax: (575) 393-0720
District II
811 S. First St., Artesia, NM 88210
Phone: (575) 748-1283 Fax: (575) 748-9720
District III
1000 Rio Brazos Road, Aztec, NM 87410
Phone: (505) 334-6178 Fax: (505) 334-6170
District IV
1220 S. St. Francis Dr., Santa Fe, NM 87505
Phone: (505) 476-3460 Fax: (505) 476-3462

State of New Mexico
Energy, Minerals & Natural Resources Department
OIL CONSERVATION DIVISION
1220 South St. Francis Dr.
Santa Fe, NM 87505

Form C-102
Revised August 1, 2011
Submit one copy to appropriate
District Office

☐ AMENDED REPORT

WELL LOCATION AND ACREAGE DEDICATION PLAT

1 API Number 30-025-46277	2 Pool Code 5695	3 Pool Name BILBREY BASIN BONE SPRING
4 Property Code 726001	5 Property Name BILBREY 34/27 B30B FEDERAL COM	6 Well Number 1H
7 GRID NO. 14744	8 Operator Name MEWBOURNE OIL COMPANY	9 Elevation 3727'

10 Surface Location

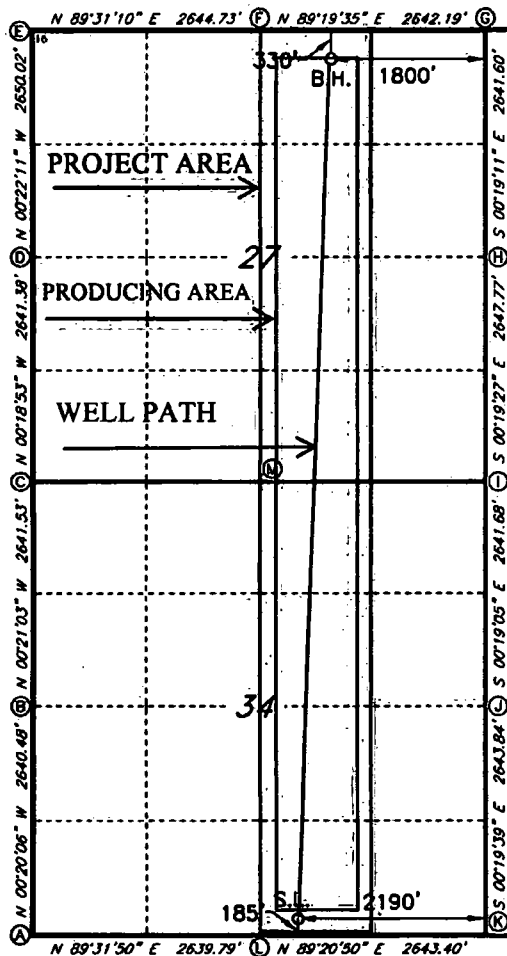
UL or lot no.	Section	Township	Range	Lot Idn	Feet from the	North/South line	Feet from the	East/West line	County
0	34	21S	32E		185	SOUTH	2190	EAST	LEA

11 Bottom Hole Location If Different From Surface

UL or lot no.	Section	Township	Range	Lot Idn	Feet from the	North/South line	Feet from the	East/West line	County
B	27	21S	32E		330	NORTH	1800	EAST	LEA

12 Dedicated Acres 320	13 Joint or Infill	14 Consolidation Code	15 Order No.
----------------------------------	--------------------	-----------------------	--------------

No allowable will be assigned to this completion until all interest have been consolidated or a non-standard unit has been approved by the division.



GEODETIC DATA
NAD 83 GRID - NM EAST
SURFACE LOCATION
N 520270.7 - E 748731.1
LAT: 32.4284968° N
LONG: 103.6611578° W
BOTTOM HOLE
N 530332.0 - E 749064.3
LAT: 32.4561459° N
LONG: 103.6598723° W
CORNER DATA
NAD 83 GRID - NM EAST
A: FOUND BRASS CAP "1916"
N 520058.9 - E 745639.6
B: FOUND BRASS CAP "1916"
N 522698.8 - E 745624.2
C: FOUND BRASS CAP "1916"
N 525339.7 - E 745608.0
D: FOUND BRASS CAP "1916"
N 527980.5 - E 745593.5
E: FOUND BRASS CAP "1916"
N 530629.8 - E 745578.4
F: FOUND BRASS CAP "1916"
N 530652.0 - E 748220.5
G: FOUND BRASS CAP "1916"
N 530683.1 - E 750861.9
H: FOUND BRASS CAP "1916"
N 528042.1 - E 750876.7
I: FOUND BRASS CAP "1916"
N 525394.9 - E 750891.6
J: FOUND BRASS CAP "1916"
N 522753.9 - E 750906.3
K: FOUND BRASS CAP "1916"
N 520110.6 - E 750921.4
L: FOUND BRASS CAP "1916"
N 520080.5 - E 748278.8
M: FOUND BRASS CAP "1916"
N 525372.6 - E 748256.7

17 OPERATOR CERTIFICATION

I hereby certify that the information contained herein is true and complete to the best of my knowledge and belief, and that this organization either owns a working interest or leased mineral interest in the land including the proposed bottom hole location or has a right to drill this well at this location pursuant to a contract with an owner of such a mineral or working interest, or to a voluntary pooling agreement or a compulsory pooling agreement heretofore entered by the division.

Signature **Bradley Bishop** Date **3-7-18**
Printed Name
BRADLEY BISHOP
E-mail Address
BBISHOP@MEWBOURNE.COM

18 SURVEYOR CERTIFICATION

I hereby certify that the well location shown on this plat was plotted from field notes of actual surveys made by me or under my supervision, and that the same is true and correct to the best of my belief.

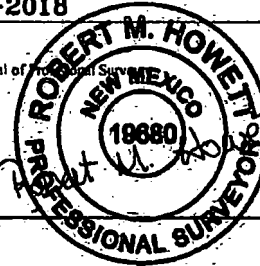
02-23-2018

Date of Survey

Signature and Seal of Professional Surveyor

19680

Certificate Number



Job No.: LS1802200