

**HOBBS OGDEN** Energy,

OIL CONSERVATION DIVISION

7410 JUL 31 2019  
14-6170

RECEIVED

Amended dedicated  
surrender

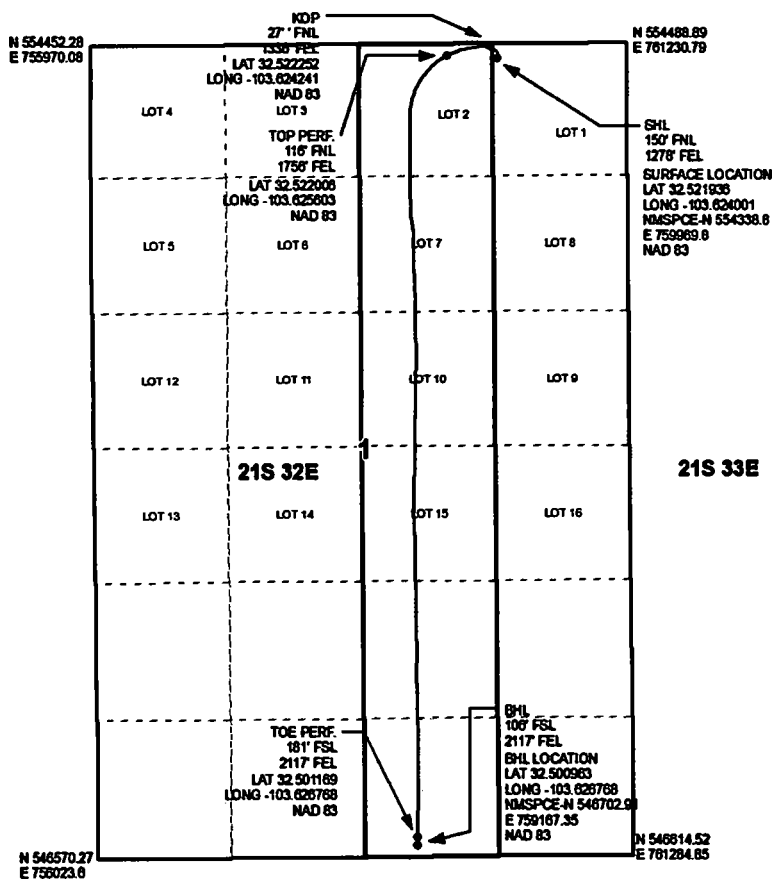
## WELL LOCATION AND ACREAGE DEDICATION PLAT

### <sup>10</sup> Surface Location

<sup>11</sup> Bottom Hole Location If Different From Surface

| <sup>12</sup> Dedicated Acres | <sup>13</sup> Joint or Infill | <sup>14</sup> Consolidation Code | <sup>15</sup> Order No. |
|-------------------------------|-------------------------------|----------------------------------|-------------------------|
| 238.79                        |                               |                                  |                         |

No allowable will be assigned to this completion until all interests have been consolidated or a non-standard unit has been approved by the division.



I hereby certify that the information contained herein is true and complete to the best of my knowledge and belief, and that this organization either owns a working interest or unleased mineral interest in the land including the proposed bottom hole location or has a right to drill this well at this location pursuant to a contract with an owner of such a mineral or working interest, or to a voluntary pooling agreement or a compulsory pooling order heretofore entered by the division.

Jennifer Elrod 7/29/2019  
Signature Date

JENNIFER ELROD

Printed Name \_\_\_\_\_

**jelrod@chisholmenergy.com**

E-mail Address

*I hereby certify that the well location shown on this plat was plotted from field notes of actual surveys made by me or under my supervision, and that the same is true and correct to the best of my belief.*

Date of Survey

**Signature and Seal of Professional Surveyor:**

**Certificate Number**

Intent ☐ As Drilled ☒

API #  
30-025-44856

|                                                     |                                       |                   |
|-----------------------------------------------------|---------------------------------------|-------------------|
| Operator Name:<br>CHISHOLM ENERGY OPERATING,<br>LLC | Property Name:<br>MINIS 1 FED COM 3BS | Well Number<br>7H |
|-----------------------------------------------------|---------------------------------------|-------------------|

Kick Off Point (KOP)

|                       |              |                 |              |     |                          |                   |              |                  |               |
|-----------------------|--------------|-----------------|--------------|-----|--------------------------|-------------------|--------------|------------------|---------------|
| UL<br>LOT 2           | Section<br>1 | Township<br>21S | Range<br>32E | Lot | Feet<br>27               | From N/S<br>NORTH | Feet<br>1336 | From E/W<br>EAST | County<br>LEA |
| Latitude<br>32.522252 |              |                 |              |     | Longitude<br>-103.624241 |                   |              |                  | NAD<br>83     |

First Take Point (FTP)

|                       |              |                 |              |     |                          |                   |              |                  |               |
|-----------------------|--------------|-----------------|--------------|-----|--------------------------|-------------------|--------------|------------------|---------------|
| UL<br>2               | Section<br>1 | Township<br>21S | Range<br>32E | Lot | Feet<br>116              | From N/S<br>NORTH | Feet<br>1756 | From E/W<br>EAST | County<br>LEA |
| Latitude<br>32.522006 |              |                 |              |     | Longitude<br>-103.625603 |                   |              |                  | NAD<br>83     |

Last Take Point (LTP)

|                       |              |                 |              |     |                          |                   |              |                  |               |
|-----------------------|--------------|-----------------|--------------|-----|--------------------------|-------------------|--------------|------------------|---------------|
| UL<br>O               | Section<br>1 | Township<br>21S | Range<br>32E | Lot | Feet<br>181              | From N/S<br>SOUTH | Feet<br>2117 | From E/W<br>EAST | County<br>LEA |
| Latitude<br>32.501169 |              |                 |              |     | Longitude<br>-103.626768 |                   |              |                  | NAD<br>83     |

Is this well the defining well for the Horizontal Spacing Unit? ☒

Is this well an infill well? ☐

**HOBBS OCD**  
**JUL 31 2019**  
**RECEIVED**

If infill is yes please provide API if available, Operator Name and well number for Defining well for Horizontal Spacing Unit.

|       |                |                |             |
|-------|----------------|----------------|-------------|
| API # | Operator Name: | Property Name: | Well Number |
|       |                |                |             |

KZ 06/29/2018