

District I
1625 N. French Dr., Hobbs, NM 88240
Phone: (575) 393-6161 Fax: (575) 393-0720
District II
811 S. First St., Artesia, NM 88210
Phone: (575) 748-1283 Fax: (575) 748-1283
District III
1000 Rio Brazos Road, Aztec, NM 87410
Phone: (505) 334-6178 Fax: (505) 334-6170
District IV
1220 S. St. Francis Dr., Santa Fe, NM 87505
Phone: (505) 476-3460 Fax: (505) 476-3462

State of New Mexico
Energy, Minerals & Natural Resources
Department
OIL CONSERVATION DIVISION
1220 South St. Francis Dr.
Santa Fe, NM 87505

FORM C-102

Revised August 1, 2011

Submit one copy to appropriate

District Office

☐ AMENDED REPORT

WELL LOCATION AND ACREAGE DEDICATION PLAT

| | | |
|---|--|--|
| ¹ API Number 30-025-45434 | ² Pool Code 97704 | ³ Pool Name WILSON; BONE SPRING, NORTH |
| ⁴ Property Code 323020 | ⁵ Property Name BRUCE KEPLINGER 13 STATE COM | ⁶ Well Number 123H |
| ⁷ GRID No. 228937 | ⁸ Operator Name MATADOR PRODUCTION COMPANY | ⁹ Elevation 3665' |

¹⁰Surface Location

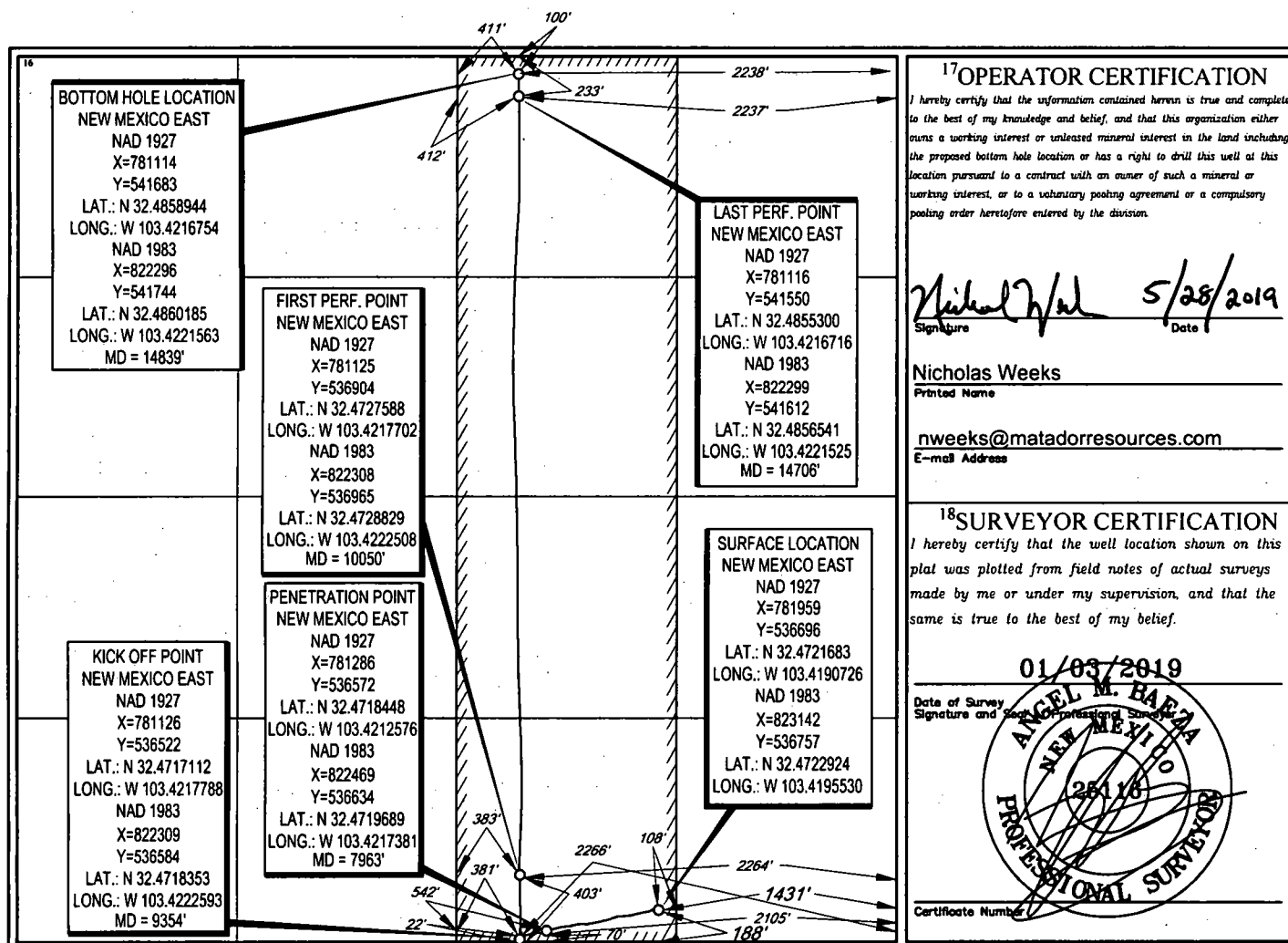
| UL or lot no. | Section | Township | Range | Lot Idn | Feet from the | North/South line | Feet from the | East/West line | County |
|---------------|---------|----------|-------|---------|---------------|------------------|---------------|----------------|--------|
| 0 | 13 | 21-S | 34-E | - | 188' | SOUTH | 1431' | EAST | LEA |

¹¹Bottom Hole Location If Different From Surface

| UL or lot no. | Section | Township | Range | Lot Idn | Feet from the | North/South line | Feet from the | East/West line | County |
|---------------|---------|----------|-------|---------|---------------|------------------|---------------|----------------|--------|
| B | 13 | 21-S | 34-E | - | 100' | NORTH | 2238' | EAST | LEA |

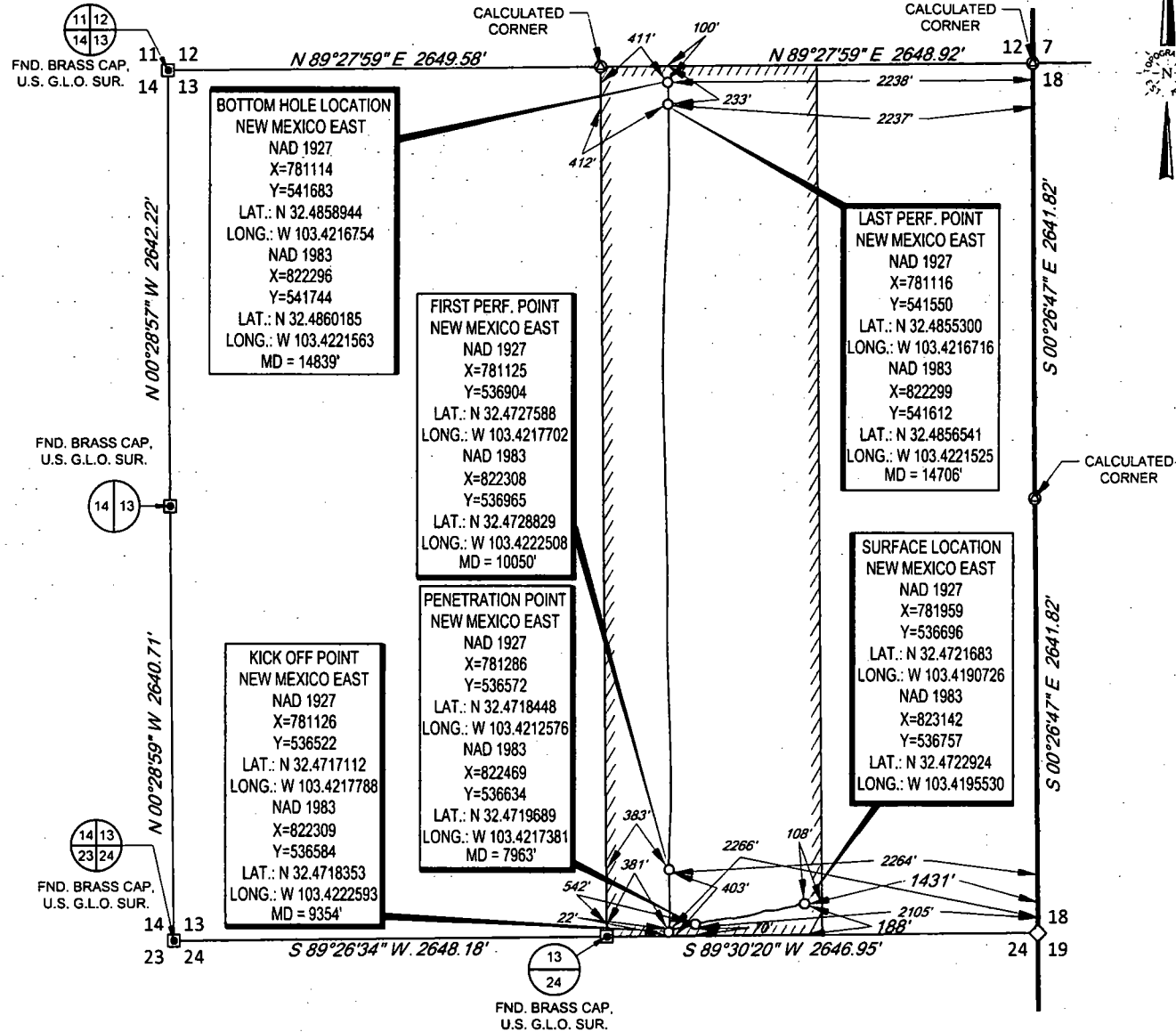
| | | | |
|--------------------------------------|-------------------------------|----------------------------------|-------------------------|
| ¹² Dedicated Acres 160 | ¹³ Joint or Infill | ¹⁴ Consolidation Code | ¹⁵ Order No. |
|--------------------------------------|-------------------------------|----------------------------------|-------------------------|

No allowable will be assigned to this completion until all interests have been consolidated or a non-standard unit has been approved by the division.



SCALE: 1" = 1000'
0' 500' 1000'

SECTION 13, TOWNSHIP 21-S, RANGE 34-E, N.M.P.M.
LEA COUNTY, NEW MEXICO

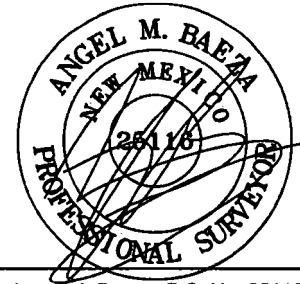


LEASE NAME & WELL NO.: BRUCE KEPLINGER 13 STATE COM 123H
SECTION 13 TWP 21-S RGE 34-E SURVEY N.M.P.M.
COUNTY LEA STATE NM ELEVATION 3665'
DESCRIPTION 188' FSL & 1431' FEL



TOPOGRAPHIC
LOYALTY INNOVATION LEGACY

1400 EVERMAN PARKWAY, Ste. 148 • FT. WORTH, TEXAS 76140
TELEPHONE: (817) 744-7512 • FAX (817) 744-7554
2903 NORTH BIG SPRING • MIDLAND, TEXAS 79705
TELEPHONE: (432) 682-1653 OR (800) 787-1653 • FAX (432) 682-1743
WWW.TOPOGRAPHIC.COM



Angel M. Baeza, P.S. No. 25116
MAY 28, 2019

BRUCE KEPLINGER 13
STATE COM 123H
(AS-COMPLETED)

REVISION:

| INT | DATE |
|-----|------|
| | |
| | |
| | |
| | |

DATE: 05/23/19

FILE: AD_BRUCE_KEPLINGER_13 STATE COM_123H

DRAWN BY: JDR

SHEET: 1 OF 1

NOTES:

1. ORIGINAL DOCUMENT SIZE: 8.5" X 11"
2. ALL BEARINGS, DISTANCES, AND COORDINATE VALUES CONTAINED HEREIN ARE GRID BASED UPON THE NEW MEXICO COORDINATE SYSTEM OF 1983, EAST ZONE, U.S. SURVEY FEET.
3. CERTIFICATION IS MADE ONLY TO THE LOCATION OF THIS EASEMENT, IN RELATION TO THE EVIDENCE FOUND DURING A FIELD SURVEY, MADE ON THE GROUND, UNDER MY SUPERVISION, AND USING DOCUMENTATION PROVIDED BY MATADOR PRODUCTION COMPANY. ONLY UTILITIES/EASEMENTS THAT WERE VISIBLE ON THE DATE OF THIS SURVEY, WITHIN/ADJOINING THIS EASEMENT, HAVE BEEN LOCATED AS SHOWN HEREON OF WHICH I HAVE KNOWLEDGE. THIS CERTIFICATION IS LIMITED TO THOSE PERSONS OR ENTITIES SHOWN ON THE FACE OF THIS PLAT AND IS NON-TRANSFERABLE, AND MADE FOR THIS TRANSACTION ONLY.
4. ADJOINER INFORMATION SHOWN FOR INFORMATIONAL PURPOSES ONLY.