

District I  
1625 N. French Dr., Hobbs, NM 88240  
Phone: (575) 393-6161 Fax: (575) 393-6162  
District II  
811 S. First St., Artesia, NM 88210  
Phone: (575) 748-1283 Fax: (575) 748-9720  
District III  
1000 Rio Brazos Road, Aztec, NM 87410  
Phone: (505) 334-6178 Fax: (505) 334-6170  
District IV  
1220 S. St. Francis Dr., Santa Fe, NM 87505  
Phone: (505) 476-3460 Fax: (505) 476-3462

**HOBBS OCD** State of New Mexico  
Energy, Minerals & Natural Resources Department  
OIL CONSERVATION DIVISION  
1220 South St. Francis Dr.  
Santa Fe, NM 87505

Form C-102  
Revised August 1, 2011  
Submit one copy to appropriate  
District Office

☐ AMENDED REPORT

AUG 20 2019

RECEIVED

WELL LOCATION AND ACREAGE DEDICATION PLAT

<sup>1</sup> API Number <b>30-025-45777</b>	<sup>2</sup> Pool Code <b>96434</b>	<sup>3</sup> Pool Name <b>Red Hills; Bone Spring, North</b>
<sup>4</sup> Property Code <b>318022</b>	<sup>5</sup> Property Name <b>PIRATE STATE</b>	<sup>6</sup> Well Number <b>302H</b>
<sup>7</sup> OGRID No. <b>372165</b>	<sup>8</sup> Operator Name <b>CENTENNIAL RESOURCE PRODUCTION, LLC</b>	<sup>9</sup> Elevation <b>3529.3'</b>

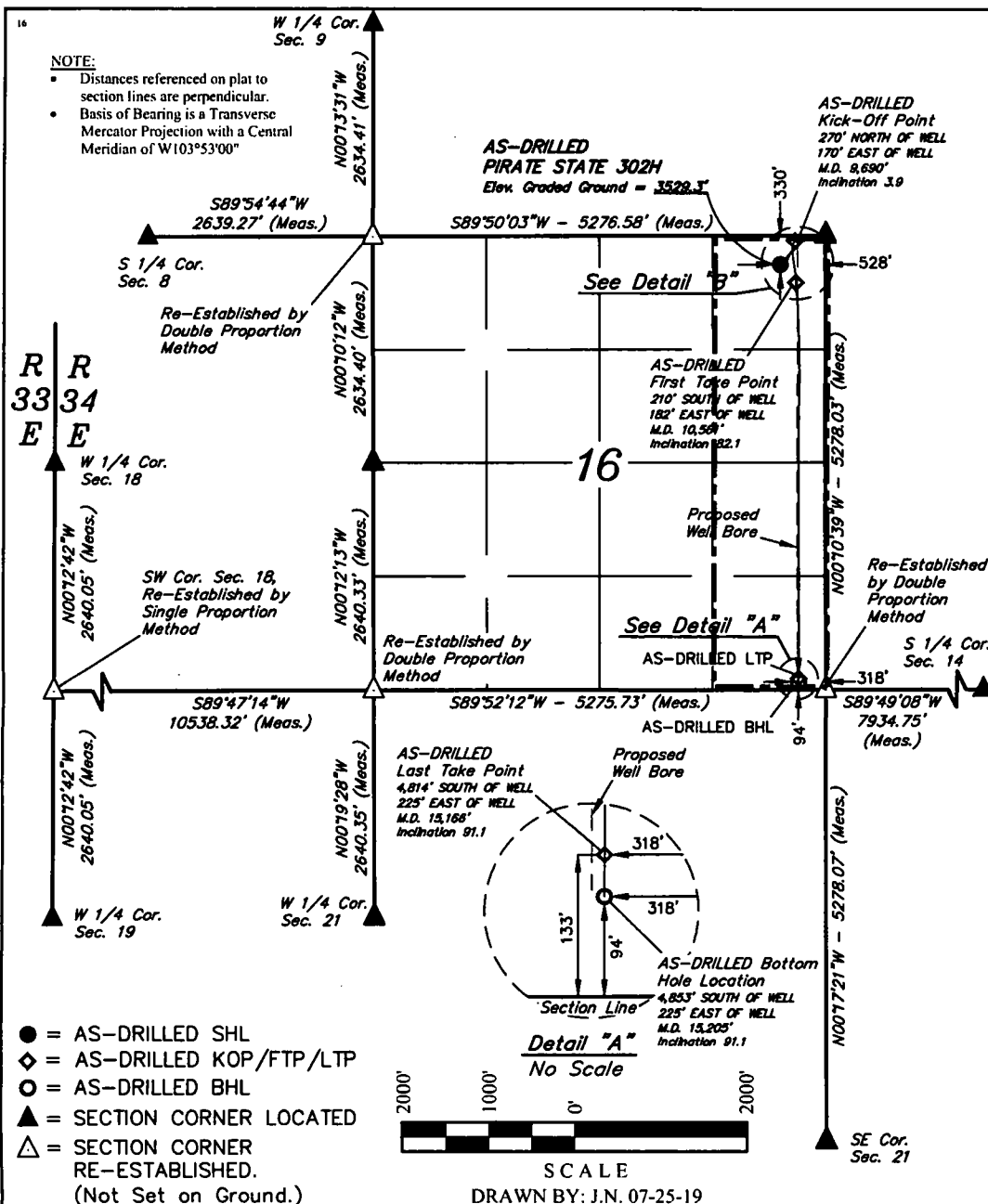
<sup>10</sup> Surface Location

UL or lot no.	Section	Township	Range	Lot Idn	Feet from the	North/South line	Feet from the	East/West line	County
A	16	24S	34E		330	NORTH	528	EAST	LEA

<sup>11</sup> Bottom Hole Location If Different From Surface

UL or lot no.	Section	Township	Range	Lot Idn	Feet from the	North/South line	Feet from the	East/West line	County
P	16	24S	34E		94	SOUTH	318	EAST	LEA
<sup>12</sup> Dedicated Acres 160	<sup>13</sup> Joint or Infill	<sup>14</sup> Consolidation Code	<sup>15</sup> Order No.						

No allowable will be assigned to this completion until all interests have been consolidated or a non-standard unit has been approved by the division.



**<sup>17</sup> OPERATOR  
CERTIFICATION**

I hereby certify that the information contained herein is true and complete to the best of my knowledge and belief, and that this organization either owns a working interest or unleased mineral interest in the land including the proposed bottom hole location or has a right to drill this well at this location pursuant to a contract with an owner of such a mineral or working interest, or to a voluntary pooling agreement or a compulsory pooling order heretofore entered by the division.

Signature: *K. Schlichting* Date: **8/19/19**

**Kanicia Schlichting**  
Printed Name

kanicia.schlichting@cdevinc.com  
E-mail Address

**<sup>18</sup> SURVEYOR  
CERTIFICATION**

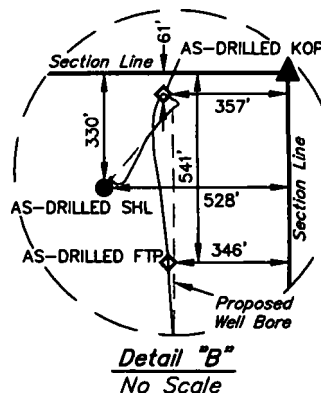
I hereby certify that the well location shown on this plat was plotted from field notes of actual surveys made by me or under my supervision, and that the same is true and correct to the best of my belief.

July 22, 2019

Date of Survey  
Signature and Seal of Professional Surveyor:



Certificate Number:



<b>NAD 83 (AS-DRILLED SHL)</b>
LATITUDE = 32°13'26.01" (32.223892°)
LONGITUDE = 103°28'05.11" (103.468085°)
STATE PLANE NAD 83 (N.M. EAST)
Y: 446263.12' X: 808904.73'
UTM, NAD 83 (ZONE 13)
Y: 11700377.01' X: 2114012.52'

<b>NAD 83 (AS-DRILLED KOP)</b>
LATITUDE = 32°13'28.68" (32.224633°)
LONGITUDE = 103°28'03.12" (103.467533°)
STATE PLANE NAD 83 (N.M. EAST)
Y: 446534.14' X: 809073.22'
UTM, NAD 83 (ZONE 13)
Y: 11700649.03' X: 2114179.30'

<b>NAD 83 (AS-DRILLED FTP)</b>
LATITUDE = 32°13'23.93" (32.223314°)
LONGITUDE = 103°28'02.99" (103.467499°)
STATE PLANE NAD 83 (N.M. EAST)
Y: 446054.13' X: 809087.83'
UTM, NAD 83 (ZONE 13)
Y: 11700169.19' X: 2114196.89'

<b>NAD 83 (AS-DRILLED LTP)</b>
LATITUDE = 32°12'38.38" (32.210661°)
LONGITUDE = 103°28'02.71" (103.467418°)
STATE PLANE NAD 83 (N.M. EAST)
Y: 441451.19' X: 809149.69'
UTM, NAD 83 (ZONE 13)
Y: 11695567.34' X: 2114287.30'

<b>NAD 83 (AS-DRILLED BHL)</b>
LATITUDE = 32°12'37.99" (32.210553°)
LONGITUDE = 103°28'02.71" (103.467419°)
STATE PLANE NAD 83 (N.M. EAST)
Y: 441412.20' X: 809149.73'
UTM, NAD 83 (ZONE 13)
Y: 11695528.35' X: 2114287.58'

**APPROXIMATE WELL  
BORE DISTANCE FROM  
FTP TO LTP**

Section 16 4,605.09'