

UNITED STATES  
DEPARTMENT OF THE INTERIOR  
BUREAU OF LAND MANAGEMENTOCD Hobbs  
HOBBS OGD  
AUG 22 2019  
RECEIVEDFORM APPROVED  
OMB No. 1004-0137  
Expires: July 31, 2010

## WELL COMPLETION OR RECOMPLETION REPORT AND LOG

1a. Type of Well <input checked="" type="checkbox"/> Oil Well <input type="checkbox"/> Gas Well <input type="checkbox"/> Dry <input type="checkbox"/> Other		5. Lease Serial No. NMNM135247
b. Type of Completion <input checked="" type="checkbox"/> New Well <input type="checkbox"/> Work Over <input type="checkbox"/> Deepen <input type="checkbox"/> Plug Back <input type="checkbox"/> Diff. Re		6. Indian, Allottee or Tribe Name
2. Name of Operator MATADOR PRODUCTION COMPANY Contact: RUSTY KLEIN E-Mail: rusty.klein@matadorresources.com		7. Unit or CA Agreement Name and No. NMNM139606
3. Address 5400 LBJ FREEWAY SUITE 1500 DALLAS, TX 75240		8. Lease Name and Well No. NINA CORTELL FED COM 121H
3a. Phone No. (include area code) Ph: 575-627-2439 Ext: 2439		9. API Well No. 30-025-44548-00-S1
4. Location of Well (Report location clearly and in accordance with Federal requirements)* At surface SWSW 150FSL 555FWL 32.413878 N Lat, 103.669341 W Lon At top prod interval reported below SWSW 336FSL 707FWL At total depth Lot 4 101FNL 652FWL 32.427693 N Lat, 103.669066 W Lon		10. Field and Pool, or Exploratory BILBREY BASIN-BONE SPRING
14. Date Spudded 09/03/2018		11. Sec., T., R., M., or Block and Survey or Area Sec 3 T22S R32E Mer NMP
15. Date T.D. Reached 10/20/2018		12. County or Parish LEA
16. Date Completed <input type="checkbox"/> D & A <input checked="" type="checkbox"/> Ready to Prod. 12/22/2018		13. State NM
17. Elevations (DF, KB, RT, GL)* 3806 GL		
18. Total Depth: MD TVD 14916 9978	19. Plug Back T.D.: MD TVD 14809	20. Depth Bridge Plug Set: MD TVD
21. Type Electric & Other Mechanical Logs Run (Submit copy of each) OPENHOLELOGS;GR CCL CBL		22. Was well cored? <input checked="" type="checkbox"/> No <input type="checkbox"/> Yes (Submit analysis) Was DST run? <input checked="" type="checkbox"/> No <input type="checkbox"/> Yes (Submit analysis) Directional Survey? <input type="checkbox"/> No <input checked="" type="checkbox"/> Yes (Submit analysis)

## 23. Casing and Liner Record (Report all strings set in well)

Hole Size	Size/Grade	Wt. (#/ft.)	Top (MD)	Bottom (MD)	Stage Cementer Depth	No. of Sk. & Type of Cement	Slurry Vol. (BBL)	Cement Top*	Amount Pulled
24.000	20.000 J55	94.0		148		450		0	
17.500	13.375 J55	54.5		819		870	244	0	
12.250	9.625 J55	40.0		5007		1516	441	0	
8.750	5.500 T-95	23.0	0	10436					
8.750	5.500 P110	20.0	10436	14907		2290	685	2360	

## 24. Tubing Record

Size	Depth Set (MD)	Packer Depth (MD)	Size	Depth Set (MD)	Packer Depth (MD)	Size	Depth Set (MD)	Packer Depth (MD)
2.875	9518	9513						

## 25. Producing Intervals

## 26. Perforation Record

Formation	Top	Bottom	Perforated Interval	Size	No. Holes	Perf. Status
A) BONE SPRING	10050	14761	10050 TO 14632	0.000	660	OPEN
B)						
C)						
D)						

## 27. Acid, Fracture, Treatment, Cement Squeeze, Etc.

Depth Interval	Amount and Type of Material
10050 TO 14761	FRAC'D W/20000 GALLONS 15% HCL ACID, 1,332,114 GALLONS PAD, 9,968,574 GALLONS CLEAN FLUID,

## 28. Production - Interval A

Date First Produced	Test Date	Hours Tested	Test Production	Oil BBL	Gas MCF	Water BBL	Oil Gravity Corr. API	Gas Gravity	Production Method
12/27/2018	03/01/2019	24	→	843.0	990.0	1652.0			GAS LIFT
Choke Size	Tbg. Press. Flwg.	Csg. Press.	24 Hr. Rate	Oil BBL	Gas MCF	Water BBL	Gas:Oil Ratio	Well Status	
64/64"	SI	1080.0	→	843	990	1652		POW	

## 28a. Production - Interval B

Date First Produced	Test Date	Hours Tested	Test Production	Oil BBL	Gas MCF	Water BBL	Oil Gravity Corr. API	Gas Gravity	Production Method
			→						
Choke Size	Tbg. Press. Flwg.	Csg. Press.	24 Hr. Rate	Oil BBL	Gas MCF	Water BBL	Gas:Oil Ratio	Well Status	
	SI		→						

(See Instructions and spaces for additional data on reverse side)

ELECTRONIC SUBMISSION #466741 VERIFIED BY THE BLM WELL INFORMATION SYSTEM

\*\* BLM REVISED \*\* BLM REVISED \*\* BLM REVISED \*\* BLM REVISED \*\* BLM REVISED \*\*

Reclamation Due: 6/22/19

ACCEPTED FOR RECORD  
AUG 11 2019  
BUREAU OF LAND MANAGEMENT  
CARLSBAD FIELD OFFICE

K2

## 28b. Production - Interval C

Date First Produced	Test Date	Hours Tested	Test Production	Oil BBL	Gas MCF	Water BBL	Oil Gravity Corr. API	Gas Gravity	Production Method
			→						
Choke Size	Tbg. Press. Flwg. SI	Csg. Press.	24 Hr. Rate	Oil BBL	Gas MCF	Water BBL	Gas:Oil Ratio	Well Status	
			→						

## 28c. Production - Interval D

Date First Produced	Test Date	Hours Tested	Test Production	Oil BBL	Gas MCF	Water BBL	Oil Gravity Corr. API	Gas Gravity	Production Method
			→						
Choke Size	Tbg. Press. Flwg. SI	Csg. Press.	24 Hr. Rate	Oil BBL	Gas MCF	Water BBL	Gas:Oil Ratio	Well Status	
			→						

29. Disposition of Gas(Sold, used for fuel, vented, etc.)  
SOLD

## 30. Summary of Porous Zones (Include Aquifers):

Show all important zones of porosity and contents thereof: Cored intervals and all drill-stem tests, including depth interval tested, cushion used, time tool open, flowing and shut-in pressures and recoveries.

## 31. Formation (Log) Markers

Formation	Top	Bottom	Descriptions, Contents, etc.	Name	Top Meas. Depth
DELAWARE BONE SPRING 1ST	4985 10096	8848 14916	OIL AND GAS OIL AND GAS	TOP SALT BASE OF SALT DELAWARE BONE SPRING	1390 4882 4945 8848

32. Additional remarks (include plugging procedure):  
ADDITIONAL INFORMATION ATTACHED:

ADDITIONAL POINTS REQUIRED SHEET REQUIRED BY OCD  
AS DRILLED C102

PLEASE NOTE THAT THE DIRECTIONAL SURVEY ATTACHED HAS THE ORIGINAL HOLE AND THE SIDETRACK HOLE INCLUDED.

## 33. Circle enclosed attachments:

- |   |                    |               |                       |
|---|--------------------|---------------|-----------------------|
| 1. Electrical/Mechanical Logs (1 full set req'd.)     | 2. Geologic Report | 3. DST Report | 4. Directional Survey |
| 5. Sundry Notice for plugging and cement verification | 6. Core Analysis   | 7. Other:     |                       |

34. I hereby certify that the foregoing and attached information is complete and correct as determined from all available records (see attached instructions):

Electronic Submission #466741 Verified by the BLM Well Information System.  
For MATADOR PRODUCTION COMPANY, sent to the Hobbs  
Committed to AFMSS for processing by DEBORAH HAM on 07/02/2019 (19DMH0124SE)

Name (please print) RUSTY KLEIN

Title REGULATORY ANALYST

Signature \_\_\_\_\_ (Electronic Submission)

Date 05/28/2019

Title 18 U.S.C. Section 1001 and Title 43 U.S.C. Section 1212, make it a crime for any person knowingly and willfully to make to any department or agency of the United States any false, fictitious or fraudulent statements or representations as to any matter within its jurisdiction.

**\*\* REVISED \*\* REVISED \*\* REVISED \*\* REVISED \*\* REVISED \*\* REVISED \*\* REVISED \*\***

**Additional data for transaction #466741 that would not fit on the form**

**32. Additional remarks, continued**

DATE OF 1ST PRODUCTION: 12-27-2019; GAS CONNECTED TO SALES: 1-3-2019

District I  
1625 N. French Dr., Hobbs, NM 88240  
Phone: (575) 393-6161 Fax: (575) 393-0720  
District II  
811 S. First St., Artesia, NM 88210  
Phone: (575) 748-1283 Fax: (575) 748-9720  
District III  
1000 Rio Brazos Road, Aztec, NM 87410  
Phone: (505) 334-6178 Fax: (505) 334-6170  
District IV  
1220 S. St. Francis Dr., Santa Fe, NM 87505  
Phone: (505) 476-3460 Fax: (505) 476-3462

State of New Mexico  
Energy, Minerals & Natural Resources  
Department  
OIL CONSERVATION DIVISION  
1220 South St. Francis Dr.  
Santa Fe, NM 87505

FORM C-102

Revised August 1, 2011

Submit one copy to appropriate

District Office

☒ AMENDED REPORT

WELL LOCATION AND ACREAGE DEDICATION PLAT

As Drilled

<sup>1</sup> API Number 30-025-44548	<sup>2</sup> Pool Code 5695	<sup>3</sup> Pool Name Bilbrey Basin; Bone Spring
<sup>4</sup> Property Code 320841	<sup>5</sup> Property Name NINA CORTELL FED COM	
<sup>6</sup> OGRID No. 228937	<sup>7</sup> Operator Name MATADOR PRODUCTION COMPANY	<sup>8</sup> Well Number #121H
		<sup>9</sup> Elevation 3806'

<sup>10</sup>Surface Location

UL or lot no.	Section	Township	Range	Lot Idn	Feet from the	North/South line	Feet from the	East/West line	County
M	3	22-S	32-E	-	150'	SOUTH	555'	WEST	LEA

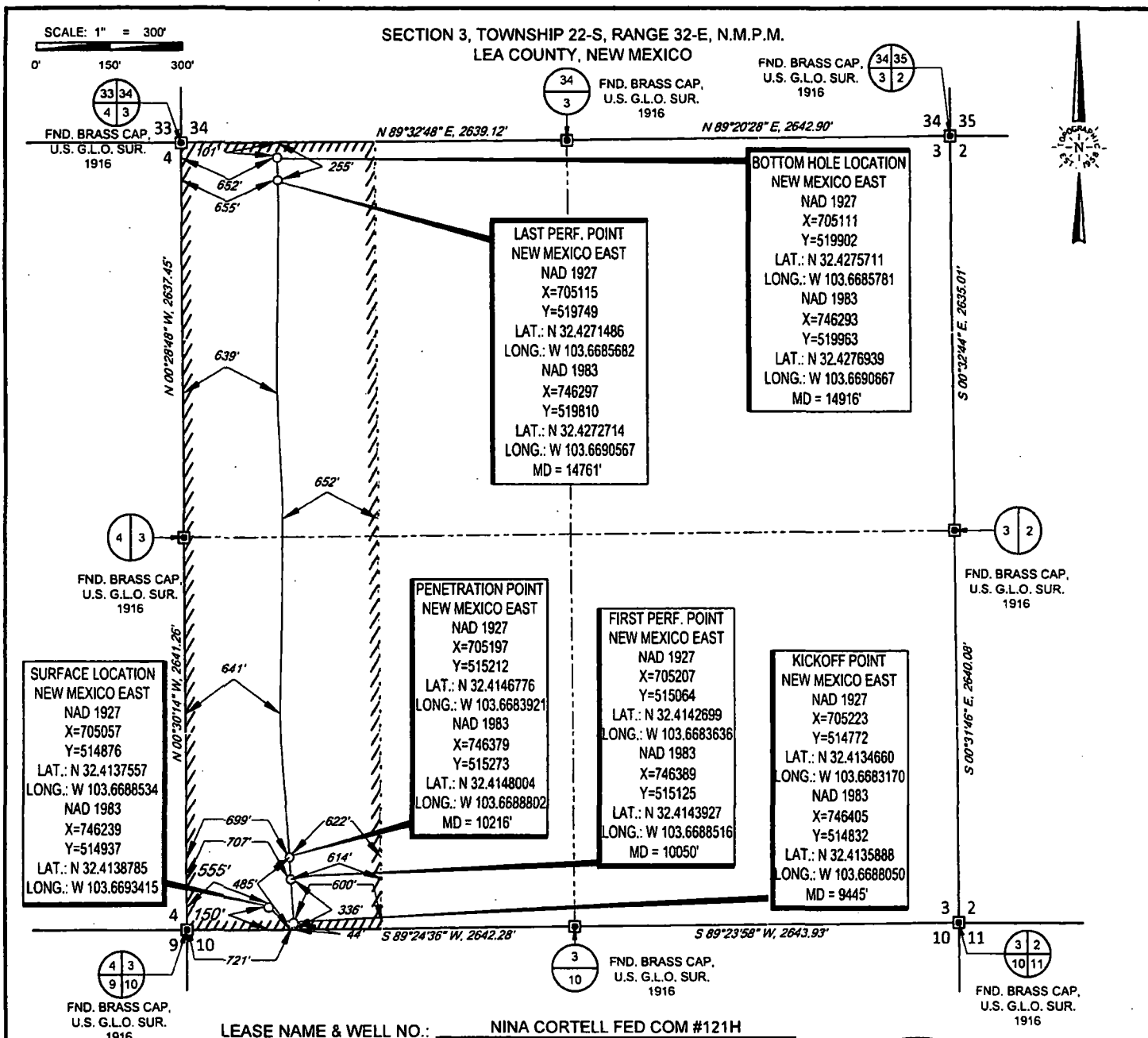
<sup>11</sup>Bottom Hole Location If Different From Surface

UL or lot no.	Section	Township	Range	Lot Idn	Feet from the	North/South line	Feet from the	East/West line	County
4	3	22-S	32-E	-	101'	NORTH	652'	WEST	LEA

<sup>12</sup> Dedicated Acres 159.92	<sup>13</sup> Joint or Infill	<sup>14</sup> Consolidation Code	<sup>15</sup> Order No.
---	-------------------------------	----------------------------------	-------------------------

No allowable will be assigned to this completion until all interests have been consolidated or a non-standard unit has been approved by the division.

	<b>LAST PERF. POINT</b> NEW MEXICO EAST NAD 1927 X=705115 Y=519749 LAT.: N 32.4271486 LONG.: W 103.6685682 NAD 1983 X=746297 Y=519810 LAT.: N 32.4272714 LONG.: W 103.6690567 MD = 14761'	<b>BOTTOM HOLE LOCATION</b> NEW MEXICO EAST NAD 1927 X=705111 Y=519902 LAT.: N 32.4275711 LONG.: W 103.6685781 NAD 1983 X=746293 Y=519963 LAT.: N 32.4276939 LONG.: W 103.6690667 MD = 14916'	<b><sup>17</sup>OPERATOR CERTIFICATION</b> I hereby certify that the information contained herein is true and complete to the best of my knowledge and belief, and that this organization either owns a working interest or unleased mineral interest in the land including the proposed bottom hole location or has a right to drill this well at this location pursuant to a contract with an owner of such a mineral or working interest, or to a voluntary pooling agreement or a compulsory pooling order heretofore entered by the division. Rusty Klein 5/28/2019 Rusty Klein rusty.klein@matadorresources.com E-mail Address	
	<b>PENETRATION POINT</b> NEW MEXICO EAST NAD 1927 X=705197 Y=515212 LAT.: N 32.4146776 LONG.: W 103.6683921 NAD 1983 X=746379 Y=515273 LAT.: N 32.4148004 LONG.: W 103.6688802 MD = 10216'	<b>FIRST PERF. POINT</b> NEW MEXICO EAST NAD 1927 X=705207 Y=515064 LAT.: N 32.4142699 LONG.: W 103.6683636 NAD 1983 X=746389 Y=515125 LAT.: N 32.4143927 LONG.: W 103.6688516 MD = 10050'		<b><sup>18</sup>SURVEYOR CERTIFICATION</b> I hereby certify that the well location shown on this plat was plotted from field notes of actual surveys made by me or under my supervision, and that the same is true to the best of my belief. 07/30/2018 Signature and Seal of Professional Surveyor PROFESSIONAL SURVEYOR Certificate Number
	<b>SURFACE LOCATION</b> NEW MEXICO EAST NAD 1927 X=705057 Y=514876 LAT.: N 32.4137557 LONG.: W 103.6688534 NAD 1983 X=746239 Y=514937 LAT.: N 32.4138785 LONG.: W 103.6693415	<b>KICKOFF POINT</b> NEW MEXICO EAST NAD 1927 X=705223 Y=514772 LAT.: N 32.4134660 LONG.: W 103.6683170 NAD 1983 X=746405 Y=514832 LAT.: N 32.4135888 LONG.: W 103.6688050 MD = 9445'		
	S:\SURVEY\MATADOR_RESOURCES\WINA_CORTELL_03-225-32E\FINAL_PRODUCT\SWD_NINA_CORTELL_FED_COM_121H.DWG 5/23/2019 11:55:15 AM adisabella			



**TOPOGRAPHIC**  
LOYALTY INNOVATION LEGACY

1400 EVERMAN PARKWAY, Ste. 146 • FT. WORTH, TEXAS 76140  
TELEPHONE: (817) 744-7512 • FAX (817) 744-7554  
2903 NORTH BIG SPRING • MIDLAND, TEXAS 79705  
TELEPHONE: (432) 682-1653 OR (800) 767-1653 • FAX (432) 682-1743  
WWW.TOPOGRAPHIC.COM



Angel M. Baeza, P.S. No. 25116  
MAY 22, 2019

NINA CORTELL FED COM #121H PRE-COMPLETION	REVISION:		NOTES:
	INT	DATE	
DATE: 05/22/19			1. ORIGINAL DOCUMENT SIZE: 8.5" X 11" 2. ALL BEARINGS, DISTANCES, AND COORDINATE VALUES CONTAINED HEREIN ARE GRID BASED UPON THE NEW MEXICO COORDINATE SYSTEM OF 1983, EAST ZONE, U.S. SURVEY FEET. 3. THIS WELL LOCATION SHOWN HEREON HAS BEEN SURVEYED ON THE GROUND UNDER MY SUPERVISION AND PREPARED ACCORDING TO THE EVIDENCE FOUND AT THE TIME OF SURVEY, AND DATA PROVIDED BY EOG RESOURCES, INC. THIS CERTIFICATION IS MADE AND LIMITED TO THOSE PERSONS OR ENTITIES SHOWN ON THE FACE OF THIS PLAT AND IS NON-TRANSFERABLE. THIS SURVEY IS CERTIFIED FOR THIS TRANSACTION ONLY.
FILE: AD_NINA_CORTELL_FED_COM_121H			
DRAWN BY: AMD			
SHEET: 1 OF 1			