

UNITED STATES
DEPARTMENT OF THE INTERIOR
BUREAU OF LAND MANAGEMENTFORM APPROVED
OMB No. 1004-0137
Expires: July 31, 2010

WELL COMPLETION OR RECOMPLETION REPORT AND LOG

1a. Type of Well ☒ Oil Well ☐ Gas Well ☐ Dry ☐ Other

b. Type of Completion ☒ New Well ☐ Work Over ☐ Deepen ☐ Plug Back ☐ Off. Resvr.
Other _____

2. Name of Operator DEVON ENERGY PRODUCTION COMPANY **Contact:** REBECCA DEAL
rebecca.deal@blm.gov

3. Address 333 WEST SHERIDAN AVENUE
OKLAHOMA CITY, OK 73102 **3a. Phone No. (include area code)**
Ph: 405-228-8429

4. Location of Well (Report location clearly and in accordance with Federal requirements)*
At surface Sec 4 T23S R34E Mer NMP SWNW 2630FNL 470FWL 32.333679 N Lat, 103.482086 W Lon
At top prod interval reported below Sec 4 T23S R34E Mer NMP SENW 2585FNL 1798FWL
At total depth Sec 33 T22S R34E Mer NMP NENW 22FNL 1714FWL

14. Date Spudded 06/23/2018 **15. Date T.D. Reached** 07/19/2018 **16. Date Completed**
☐ D & A ☒ Ready to Prod. 04/05/2019

17. Elevations (DF, KB, RT, GL)* 3415 GL

18. Total Depth: MD 18232 TVD 10347 **19. Plug Back T.D.:** MD 18109 TVD **20. Depth Bridge Plug Set:** MD TVD

21. Type Electric & Other Mechanical Logs Run (Submit copy of each) CBL **22. Was well cored?** ☒ No ☐ Yes (Submit analysis)
Was DST run? ☒ No ☐ Yes (Submit analysis)
Directional Survey? ☐ No ☒ Yes (Submit analysis)

23. Casing and Liner Record (Report all strings set in well)

Hole Size	Size/Grade	Wt. (#/ft.)	Top (MD)	Bottom (MD)	Stage Cementer Depth	No. of Sk. & Type of Cement	Slurry Vol. (BBL)	Cement Top*	Amount Pulled
20.000	16.000 J-55	75.0	0	2363		3950		0	1287
13.500	11.875 Q-125	71.8	0	3643		1205		0	481
10.625	8.625 J-55	32.0	0	5275	3569	1755		0	222
7.875	5.500 P110RY	17.0	0	18199		1595		3613	0

24. Tubing Record

Size	Depth Set (MD)	Packer Depth (MD)	Size	Depth Set (MD)	Packer Depth (MD)	Size	Depth Set (MD)	Packer Depth (MD)
2.875	9879							

25. Producing Intervals

Formation	Top	Bottom	Perforated Interval	Size	No. Holes	Perf. Status
A) BONE SPRING	10592	18052	10592 TO 18052		855	OPEN
B)						
C)						
D)						

26. Perforation Record

27. Acid, Fracture, Treatment, Cement Squeeze, Etc.

Depth Interval	Amount and Type of Material
10592 TO 18052	12,257,420# PROP; 25,200 GAL ACID

28. Production - Interval A

Date First Produced	Test Date	Hours Tested	Test Production	Oil BBL	Gas MCF	Water BBL	Oil Gravity Corr. API	Gas Gravity	Production Method
04/05/2019	04/30/2019	24	→	1266.0	1254.0	1426.0			FLows FROM WELL
Choke Size	Tbg. Press. Flwg. SI	Csg. Press.	24 Hr. Rate	Oil BBL	Gas MCF	Water BBL	Gas:Oil Ratio	Well Status	
	1202	882.0	→	1266	1254	1426	991	POW	

28a. Production - Interval B

Date First Produced	Test Date	Hours Tested	Test Production	Oil BBL	Gas MCF	Water BBL	Oil Gravity Corr. API	Gas Gravity	Production Method
			→						
Choke Size	Tbg. Press. Flwg. SI	Csg. Press.	24 Hr. Rate	Oil BBL	Gas MCF	Water BBL	Gas:Oil Ratio	Well Status	
			→						

ACCEPTED FOR RECORD
AUG 14 2019
BUREAU OF LAND MANAGEMENT
CARLSBAD FIELD OFFICE

(See Instructions and spaces for additional data on reverse side)

ELECTRONIC SUBMISSION #464357 VERIFIED BY THE BLM WELL INFORMATION SYSTEM

** BLM REVISED ** BLM REVISED ** BLM REVISED ** BLM REVISED ** BLM REVISED **

Reclamation Due: 10/5/2019

28b. Production - Interval C

Date First Produced	Test Date	Hours Tested	Test Production →	Oil BBL	Gas MCF	Water BBL	Oil Gravity Corr. API	Gas Gravity	Production Method
Choke Size	Tbg. Press. Flwg. SI	Csg. Press.	24 Hr. Rate →	Oil BBL	Gas MCF	Water BBL	Gas:Oil Ratio	Well Status	

28c. Production - Interval D

Date First Produced	Test Date	Hours Tested	Test Production →	Oil BBL	Gas MCF	Water BBL	Oil Gravity Corr. API	Gas Gravity	Production Method
Choke Size	Tbg. Press. Flwg. SI	Csg. Press.	24 Hr. Rate →	Oil BBL	Gas MCF	Water BBL	Gas:Oil Ratio	Well Status	

29. Disposition of Gas(Sold, used for fuel, vented, etc.)
SOLD

30. Summary of Porous Zones (Include Aquifers):

Show all important zones of porosity and contents thereof: Cored intervals and all drill-stem tests, including depth interval tested, cushion used, time tool open, flowing and shut-in pressures and recoveries.

31. Formation (Log) Markers

Formation	Top	Bottom	Descriptions, Contents, etc.	Name	Top Meas. Depth
RUSTLER	1695	2205	BARREN	RUSTLER	1695
SALADO	2205	5220	BARREN	SALADO	2205
BASE OF SALT	5220	5325	BARREN	BASE OF SALT	5220
DELAWARE	5325	8508	OIL/GAS	DELAWARE	5325
BONE SPRING	8508		OIL/GAS	BONE SPRING	8508

32. Additional remarks (include plugging procedure):

See attached as-drilled plat and directional survey

Six month drilling SI status requested 10/23/18 to allow for simultaneous completions.

33. Circle enclosed attachments:

- Electrical/Mechanical Logs (1 full set req'd.)
- Geologic Report
- DST Report
- Directional Survey
- Sundry Notice for plugging and cement verification
- Core Analysis
- Other:

34. I hereby certify that the foregoing and attached information is complete and correct as determined from all available records (see attached instructions):

Electronic Submission #464357 Verified by the BLM Well Information System.
For DEVON ENERGY PRODUCTION COMPAN, sent to the Hobbs
Committed to AFMSS for processing by DEBORAH HAM on 06/17/2019 (19DMH0117SE)

Name (please print) REBECCA DEAL

Title REGULATORY ANALYST

Signature _____ (Electronic Submission)

Date 05/07/2019

Title 18 U.S.C. Section 1001 and Title 43 U.S.C. Section 1212, make it a crime for any person knowingly and willfully to make to any department or agency of the United States any false, fictitious or fraudulent statements or representations as to any matter within its jurisdiction.

**** REVISED ** REVISED ** REVISED ** REVISED ** REVISED ** REVISED ** REVISED ** REVISED ****

District I
1625 N. French Dr., Hobbs, NM 88240
Phone: (575) 393-6161 Fax: (575) 393-0720
District II
811 S. First St., Artesia, NM 88210
Phone: (575) 748-1283 Fax: (575) 748-9720
District III
1000 Rio Brazos Road, Aztec, NM 87410
Phone: (505) 334-6178 Fax: (505) 334-6170
District IV
1220 S. St. Francis Dr., Santa Fe, NM 87505
Phone: (505) 476-3460 Fax: (505) 476-3462

State of New Mexico
Energy, Minerals & Natural Resources Department
OIL CONSERVATION DIVISION
1220 South St. Francis Dr.
Santa Fe, NM 87505

Form C-102
Revised August 1, 2011
Submit one copy to appropriate
District Office

☐ AMENDED REPORT

WELL LOCATION AND ACREAGE DEDICATION PLAT

¹ API Number 30-025-44829	² Pool Code 97922	³ Pool Name WC-025 G-06 S223421L; Bone Spring
⁴ Property Code 316229	⁵ Property Name RIO BLANCO 4-33 FED COM	⁶ Well Number 38H
⁷ OGRID No. 6137	⁸ Operator Name DEVON ENERGY PRODUCTION COMPANY, L.P.	⁹ Elevation 3415.4

¹⁰ Surface Location

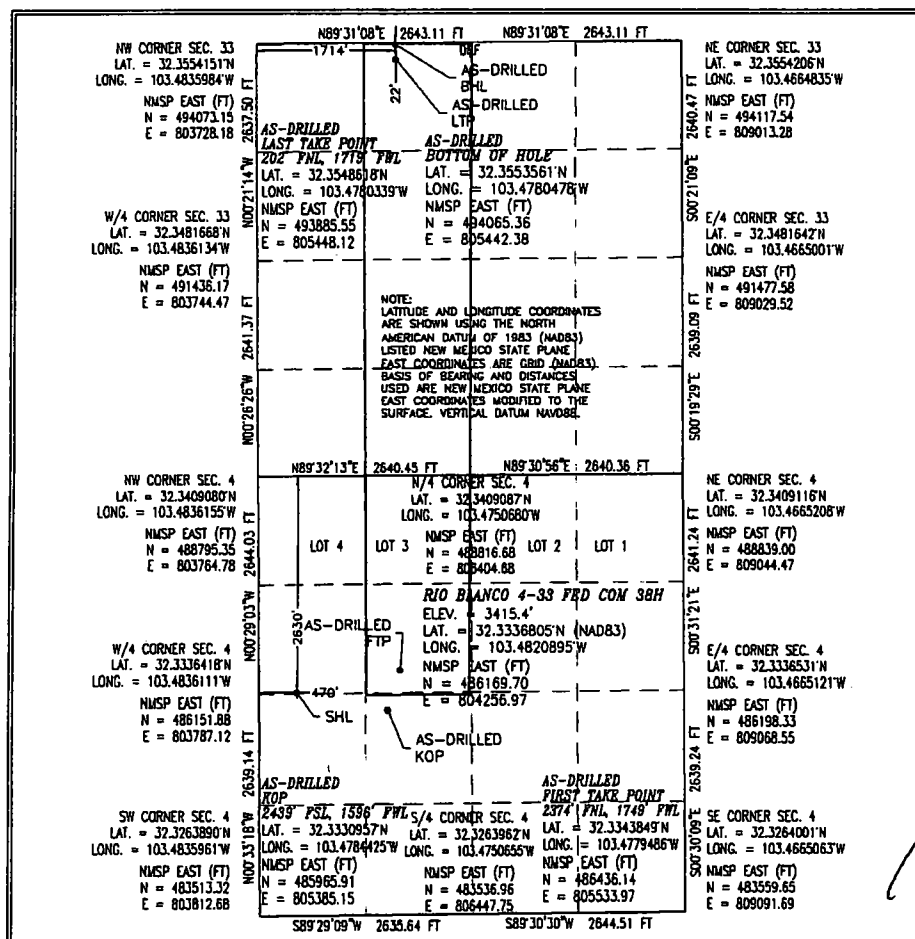
UL or lot no.	Section	Township	Range	Lot Idn	Feet from the	North/South line	Feet from the	East/West line	County
E	4	23 S	34 E		2630	NORTH	470	WEST	LEA

¹¹ Bottom Hole Location If Different From Surface

UL or lot no.	Section	Township	Range	Lot Idn	Feet from the	North/South line	Feet from the	East/West line	County
C	33	22 S	34 E		22	NORTH	1714	WEST	LEA

¹² Dedicated Acres 240	¹³ Joint or Infill	¹⁴ Consolidation Code	¹⁵ Order No.
---	-------------------------------	----------------------------------	-------------------------

No allowable will be assigned to this completion until all interests have been consolidated or a non-standard unit has been approved by the division.



¹⁷ OPERATOR CERTIFICATION

I hereby certify that the information contained herein is true and complete to the best of my knowledge and belief, and that this organization either owns a working interest or unleased mineral interest in the land including the proposed bottom hole location or has a right to drill this well at this location pursuant to a contract with an owner of such a mineral or working interest, or to a voluntary pooling agreement or a compulsory pooling order heretofore entered by the division.

Rebecca Deal 5/7/2019
Signature Date

Rebecca Deal, Regulatory Analyst
Printed Name

rebecca.deal@dvn.com
E-mail Address

¹⁸ SURVEYOR CERTIFICATION

I hereby certify that the well location shown on this plat was plotted from field notes of actual surveys made by me or under my supervision, and that the same is true and correct to the best of my belief.

MAY 6, 2019

Date of Survey

FILIMON F. JARAMILLO
Signature and Seal of Professional Surveyor
Certificate Number: **FILIMON F. JARAMILLO, PLS 12797**
PROFESSIONAL SURVEYOR
SURVEY NO. 5369B