



EOG Resources - Midland

Lea County, NM (NAD 83 NME)

Getty 5 Fed Com

#501H

OH

Plan: Plan #0.2

Standard Planning Report

24 July, 2019



Planning Report

Database: EDM 5000.14
 Company: EOG Resources - Midland
 Project: Lea County, NM (NAD 83 NME)
 Site: Getty 5 Fed Com
 Well: #501H
 Wellbore: OH
 Design: Plan #0.2

Local Co-ordinate Reference: Well #501H
 TVD Reference: KB = 25 @ 3463.0usft
 MD Reference: KB = 25 @ 3463.0usft
 North Reference: Grid
 Survey Calculation Method: Minimum Curvature

Project	Lea County, NM (NAD 83 NME)		
Map System:	US State Plane 1983	System Datum:	Mean Sea Level
Geo Datum:	North American Datum 1983		
Map Zone:	New Mexico Eastern Zone		

Site	Getty 5 Fed Com				
Site Position:	Northing:	420,163.00 usft	Latitude:	32° 9' 10.475 N	
From: Map	Easting:	772,092.00 usft	Longitude:	103° 35' 15.736 W	
Position Uncertainty:	0.0 usft	Slot Radius:	13-3/16 "	Grid Convergence:	0.40 °

Well	#501H					
Well Position	+N/-S	0.0 usft	Northing:	420,163.00 usft	Latitude:	32° 9' 10.475 N
	+E/-W	0.0 usft	Easting:	772,092.00 usft	Longitude:	103° 35' 15.736 W
Position Uncertainty	0.0 usft	Wellhead Elevation:		Ground Level:	3,438.0 usft	

Wellbore	OH				
Magnetics	Model Name	Sample Date	Declination	Dip Angle	Field Strength
	IGRF2015	12/13/2018	(°)	(°)	(nT)
			6.79	59.98	47,740.96657314

Design	Plan #0.2			
Audit Notes:				
Version:	Phase:	PLAN	Tie On Depth:	0.0
Vertical Section:	Depth From (TVD)	+N/-S	+E/-W	Direction
	(usft)	(usft)	(usft)	(°)
	0.0	0.0	0.0	1.61

Plan Survey Tool Program	Date 7/24/2019			
Depth From	Depth To	Survey (Wellbore)	Tool Name	Remarks
(usft)	(usft)			
1 0.0	18,288.1	Plan #0.2 (OH)	MWD	
			OWSG MWD - Standard	

Plan Sections										
Measured	Inclination	Azimuth	Vertical	+N/-S	+E/-W	Dogleg	Build	Turn	TFO	Target
Depth	(°)	(°)	Depth	(usft)	(usft)	Rate	Rate	Rate	(°)	
(usft)			(usft)			(°/100usft)	(°/100usft)	(°/100usft)		
0.0	0.00	0.00	0.0	0.0	0.0	0.00	0.00	0.00	0.00	
1,200.0	0.00	0.00	1,200.0	0.0	0.0	0.00	0.00	0.00	0.00	
1,344.1	2.88	117.95	1,344.0	-1.7	3.2	2.00	2.00	0.00	117.95	
7,438.8	2.88	117.95	7,431.0	-145.3	273.8	0.00	0.00	0.00	0.00	
7,582.8	0.00	0.62	7,575.0	-147.0	277.0	2.00	-2.00	0.00	180.00	
10,194.8	0.00	0.62	10,187.0	-147.0	277.0	0.00	0.00	0.00	0.00	KOP(Getty 5 FC #501)
11,094.8	90.00	359.54	10,760.0	425.9	272.4	10.00	10.00	-0.12	359.54	
18,288.1	90.00	359.54	10,760.0	7,619.0	214.0	0.00	0.00	0.00	0.00	PBHL(Getty 5 FC #50)



Planning Report

Database: EDM 5000.14
 Company: EOG Resources - Midland
 Project: Lea County, NM (NAD 83 NME)
 Site: Getty 5 Fed Com
 Well: #501H
 Wellbore: OH
 Design: Plan #0.2

Local Co-ordinate Reference: Well #501H
 TVD Reference: KB = 25 @ 3463.0usft
 MD Reference: KB = 25 @ 3463.0usft
 North Reference: Grid
 Survey Calculation Method: Minimum Curvature

Planned Survey

Measured Depth (usft)	Inclination (°)	Azimuth (°)	Vertical Depth (usft)	+N/-S (usft)	+E/-W (usft)	Vertical Section (usft)	Dogleg Rate (°/100usft)	Build Rate (°/100usft)	Turn Rate (°/100usft)
0.0	0.00	0.00	0.0	0.0	0.0	0.0	0.00	0.00	0.00
100.0	0.00	0.00	100.0	0.0	0.0	0.0	0.00	0.00	0.00
200.0	0.00	0.00	200.0	0.0	0.0	0.0	0.00	0.00	0.00
300.0	0.00	0.00	300.0	0.0	0.0	0.0	0.00	0.00	0.00
400.0	0.00	0.00	400.0	0.0	0.0	0.0	0.00	0.00	0.00
500.0	0.00	0.00	500.0	0.0	0.0	0.0	0.00	0.00	0.00
600.0	0.00	0.00	600.0	0.0	0.0	0.0	0.00	0.00	0.00
700.0	0.00	0.00	700.0	0.0	0.0	0.0	0.00	0.00	0.00
800.0	0.00	0.00	800.0	0.0	0.0	0.0	0.00	0.00	0.00
900.0	0.00	0.00	900.0	0.0	0.0	0.0	0.00	0.00	0.00
1,000.0	0.00	0.00	1,000.0	0.0	0.0	0.0	0.00	0.00	0.00
1,100.0	0.00	0.00	1,100.0	0.0	0.0	0.0	0.00	0.00	0.00
1,200.0	0.00	0.00	1,200.0	0.0	0.0	0.0	0.00	0.00	0.00
1,300.0	2.00	117.95	1,300.0	-0.8	1.5	-0.8	2.00	2.00	0.00
1,344.1	2.88	117.95	1,344.0	-1.7	3.2	-1.6	2.00	2.00	0.00
1,400.0	2.88	117.95	1,399.9	-3.0	5.7	-2.9	0.00	0.00	0.00
1,500.0	2.88	117.95	1,499.7	-5.4	10.1	-5.1	0.00	0.00	0.00
1,600.0	2.88	117.95	1,599.6	-7.7	14.6	-7.3	0.00	0.00	0.00
1,700.0	2.88	117.95	1,699.5	-10.1	19.0	-9.5	0.00	0.00	0.00
1,800.0	2.88	117.95	1,799.4	-12.4	23.4	-11.8	0.00	0.00	0.00
1,900.0	2.88	117.95	1,899.2	-14.8	27.9	-14.0	0.00	0.00	0.00
2,000.0	2.88	117.95	1,999.1	-17.2	32.3	-16.2	0.00	0.00	0.00
2,100.0	2.88	117.95	2,099.0	-19.5	36.8	-18.5	0.00	0.00	0.00
2,200.0	2.88	117.95	2,198.9	-21.9	41.2	-20.7	0.00	0.00	0.00
2,300.0	2.88	117.95	2,298.7	-24.2	45.6	-22.9	0.00	0.00	0.00
2,400.0	2.88	117.95	2,398.6	-26.6	50.1	-25.2	0.00	0.00	0.00
2,500.0	2.88	117.95	2,498.5	-28.9	54.5	-27.4	0.00	0.00	0.00
2,600.0	2.88	117.95	2,598.4	-31.3	59.0	-29.6	0.00	0.00	0.00
2,700.0	2.88	117.95	2,698.2	-33.6	63.4	-31.9	0.00	0.00	0.00
2,800.0	2.88	117.95	2,798.1	-36.0	67.8	-34.1	0.00	0.00	0.00
2,900.0	2.88	117.95	2,898.0	-38.4	72.3	-36.3	0.00	0.00	0.00
3,000.0	2.88	117.95	2,997.8	-40.7	76.7	-38.5	0.00	0.00	0.00
3,100.0	2.88	117.95	3,097.7	-43.1	81.2	-40.8	0.00	0.00	0.00
3,200.0	2.88	117.95	3,197.6	-45.4	85.6	-43.0	0.00	0.00	0.00
3,300.0	2.88	117.95	3,297.5	-47.8	90.0	-45.2	0.00	0.00	0.00
3,400.0	2.88	117.95	3,397.3	-50.1	94.5	-47.5	0.00	0.00	0.00
3,500.0	2.88	117.95	3,497.2	-52.5	98.9	-49.7	0.00	0.00	0.00
3,600.0	2.88	117.95	3,597.1	-54.9	103.4	-51.9	0.00	0.00	0.00
3,700.0	2.88	117.95	3,697.0	-57.2	107.8	-54.2	0.00	0.00	0.00
3,800.0	2.88	117.95	3,796.8	-59.6	112.2	-56.4	0.00	0.00	0.00
3,900.0	2.88	117.95	3,896.7	-61.9	116.7	-58.6	0.00	0.00	0.00
4,000.0	2.88	117.95	3,996.6	-64.3	121.1	-60.9	0.00	0.00	0.00
4,100.0	2.88	117.95	4,096.5	-66.6	125.6	-63.1	0.00	0.00	0.00
4,200.0	2.88	117.95	4,196.3	-69.0	130.0	-65.3	0.00	0.00	0.00
4,300.0	2.88	117.95	4,296.2	-71.3	134.4	-67.5	0.00	0.00	0.00
4,400.0	2.88	117.95	4,396.1	-73.7	138.9	-69.8	0.00	0.00	0.00
4,500.0	2.88	117.95	4,495.9	-76.1	143.3	-72.0	0.00	0.00	0.00
4,600.0	2.88	117.95	4,595.8	-78.4	147.8	-74.2	0.00	0.00	0.00
4,700.0	2.88	117.95	4,695.7	-80.8	152.2	-76.5	0.00	0.00	0.00
4,800.0	2.88	117.95	4,795.6	-83.1	156.6	-78.7	0.00	0.00	0.00
4,900.0	2.88	117.95	4,895.4	-85.5	161.1	-80.9	0.00	0.00	0.00
5,000.0	2.88	117.95	4,995.3	-87.8	165.5	-83.2	0.00	0.00	0.00
5,100.0	2.88	117.95	5,095.2	-90.2	170.0	-85.4	0.00	0.00	0.00
5,200.0	2.88	117.95	5,195.1	-92.6	174.4	-87.6	0.00	0.00	0.00



Planning Report

Database: EDM 5000.14
 Company: EOG Resources - Midland
 Project: Lea County, NM (NAD 83 NME)
 Site: Getty 5 Fed Com
 Well: #501H
 Wellbore: OH
 Design: Plan #0.2

Local Co-ordinate Reference: Well #501H
 TVD Reference: KB = 25 @ 3463.0usft
 MD Reference: KB = 25 @ 3463.0usft
 North Reference: Grid
 Survey Calculation Method: Minimum Curvature

Planned Survey

Measured Depth (usft)	Inclination (°)	Azimuth (°)	Vertical Depth (usft)	+N/-S (usft)	+E/-W (usft)	Vertical Section (usft)	Dogleg Rate (°/100usft)	Build Rate (°/100usft)	Turn Rate (°/100usft)
5,300.0	2.88	117.95	5,294.9	-94.9	178.8	-89.8	0.00	0.00	0.00
5,400.0	2.88	117.95	5,394.8	-97.3	183.3	-92.1	0.00	0.00	0.00
5,500.0	2.88	117.95	5,494.7	-99.6	187.7	-94.3	0.00	0.00	0.00
5,600.0	2.88	117.95	5,594.6	-102.0	192.2	-96.5	0.00	0.00	0.00
5,700.0	2.88	117.95	5,694.4	-104.3	196.6	-98.8	0.00	0.00	0.00
5,800.0	2.88	117.95	5,794.3	-106.7	201.0	-101.0	0.00	0.00	0.00
5,900.0	2.88	117.95	5,894.2	-109.0	205.5	-103.2	0.00	0.00	0.00
6,000.0	2.88	117.95	5,994.1	-111.4	209.9	-105.5	0.00	0.00	0.00
6,100.0	2.88	117.95	6,093.9	-113.8	214.4	-107.7	0.00	0.00	0.00
6,200.0	2.88	117.95	6,193.8	-116.1	218.8	-109.9	0.00	0.00	0.00
6,300.0	2.88	117.95	6,293.7	-118.5	223.2	-112.2	0.00	0.00	0.00
6,400.0	2.88	117.95	6,393.5	-120.8	227.7	-114.4	0.00	0.00	0.00
6,500.0	2.88	117.95	6,493.4	-123.2	232.1	-116.6	0.00	0.00	0.00
6,600.0	2.88	117.95	6,593.3	-125.5	236.6	-118.8	0.00	0.00	0.00
6,700.0	2.88	117.95	6,693.2	-127.9	241.0	-121.1	0.00	0.00	0.00
6,800.0	2.88	117.95	6,793.0	-130.3	245.4	-123.3	0.00	0.00	0.00
6,900.0	2.88	117.95	6,892.9	-132.6	249.9	-125.5	0.00	0.00	0.00
7,000.0	2.88	117.95	6,992.8	-135.0	254.3	-127.8	0.00	0.00	0.00
7,100.0	2.88	117.95	7,092.7	-137.3	258.8	-130.0	0.00	0.00	0.00
7,200.0	2.88	117.95	7,192.5	-139.7	263.2	-132.2	0.00	0.00	0.00
7,300.0	2.88	117.95	7,292.4	-142.0	267.6	-134.5	0.00	0.00	0.00
7,400.0	2.88	117.95	7,392.3	-144.4	272.1	-136.7	0.00	0.00	0.00
7,438.8	2.88	117.95	7,431.0	-145.3	273.8	-137.6	0.00	0.00	0.00
7,500.0	1.66	117.95	7,492.2	-146.4	275.9	-138.6	2.00	-2.00	0.00
7,582.8	0.00	0.62	7,575.0	-147.0	277.0	-139.2	2.00	-2.00	0.00
7,600.0	0.00	0.00	7,592.2	-147.0	277.0	-139.2	0.00	0.00	0.00
7,700.0	0.00	0.00	7,692.2	-147.0	277.0	-139.2	0.00	0.00	0.00
7,800.0	0.00	0.00	7,792.2	-147.0	277.0	-139.2	0.00	0.00	0.00
7,900.0	0.00	0.00	7,892.2	-147.0	277.0	-139.2	0.00	0.00	0.00
8,000.0	0.00	0.00	7,992.2	-147.0	277.0	-139.2	0.00	0.00	0.00
8,100.0	0.00	0.00	8,092.2	-147.0	277.0	-139.2	0.00	0.00	0.00
8,200.0	0.00	0.00	8,192.2	-147.0	277.0	-139.2	0.00	0.00	0.00
8,300.0	0.00	0.00	8,292.2	-147.0	277.0	-139.2	0.00	0.00	0.00
8,400.0	0.00	0.00	8,392.2	-147.0	277.0	-139.2	0.00	0.00	0.00
8,500.0	0.00	0.00	8,492.2	-147.0	277.0	-139.2	0.00	0.00	0.00
8,600.0	0.00	0.00	8,592.2	-147.0	277.0	-139.2	0.00	0.00	0.00
8,700.0	0.00	0.00	8,692.2	-147.0	277.0	-139.2	0.00	0.00	0.00
8,800.0	0.00	0.00	8,792.2	-147.0	277.0	-139.2	0.00	0.00	0.00
8,900.0	0.00	0.00	8,892.2	-147.0	277.0	-139.2	0.00	0.00	0.00
9,000.0	0.00	0.00	8,992.2	-147.0	277.0	-139.2	0.00	0.00	0.00
9,100.0	0.00	0.00	9,092.2	-147.0	277.0	-139.2	0.00	0.00	0.00
9,200.0	0.00	0.00	9,192.2	-147.0	277.0	-139.2	0.00	0.00	0.00
9,300.0	0.00	0.00	9,292.2	-147.0	277.0	-139.2	0.00	0.00	0.00
9,400.0	0.00	0.00	9,392.2	-147.0	277.0	-139.2	0.00	0.00	0.00
9,500.0	0.00	0.00	9,492.2	-147.0	277.0	-139.2	0.00	0.00	0.00
9,600.0	0.00	0.00	9,592.2	-147.0	277.0	-139.2	0.00	0.00	0.00
9,700.0	0.00	0.00	9,692.2	-147.0	277.0	-139.2	0.00	0.00	0.00
9,800.0	0.00	0.00	9,792.2	-147.0	277.0	-139.2	0.00	0.00	0.00
9,900.0	0.00	0.00	9,892.2	-147.0	277.0	-139.2	0.00	0.00	0.00
10,000.0	0.00	0.00	9,992.2	-147.0	277.0	-139.2	0.00	0.00	0.00
10,100.0	0.00	0.00	10,092.2	-147.0	277.0	-139.2	0.00	0.00	0.00
10,194.8	0.00	0.62	10,187.0	-147.0	277.0	-139.2	0.00	0.00	0.00

KOP(Getty 5 FC #501H)



Planning Report

Database: EDM 5000.14
 Company: EOG Resources - Midland
 Project: Lea County, NM (NAD 83 NME)
 Site: Getty 5 Fed Com
 Well: #501H
 Wellbore: OH
 Design: Plan #0.2

Local Co-ordinate Reference: Well #501H
 TVD Reference: KB = 25 @ 3463.0usft
 MD Reference: KB = 25 @ 3463.0usft
 North Reference: Grid
 Survey Calculation Method: Minimum Curvature

Planned Survey

Measured Depth (usft)	Inclination (°)	Azimuth (°)	Vertical Depth (usft)	+N/-S (usft)	+E/-W (usft)	Vertical Section (usft)	Dogleg Rate (°/100usft)	Build Rate (°/100usft)	Turn Rate (°/100usft)
10,200.0	0.52	359.54	10,192.2	-147.0	277.0	-139.1	10.00	10.00	0.00
10,250.0	5.52	359.54	10,242.1	-144.3	277.0	-136.5	10.00	10.00	0.00
10,300.0	10.52	359.54	10,291.6	-137.4	276.9	-129.5	10.00	10.00	0.00
10,350.0	15.52	359.54	10,340.3	-126.1	276.8	-118.3	10.00	10.00	0.00
10,400.0	20.52	359.54	10,387.8	-110.7	276.7	-102.8	10.00	10.00	0.00
10,450.0	25.52	359.54	10,433.8	-91.1	276.5	-83.3	10.00	10.00	0.00
10,500.0	30.52	359.54	10,477.9	-67.6	276.4	-59.8	10.00	10.00	0.00
10,550.0	35.52	359.54	10,519.9	-40.4	276.1	-32.6	10.00	10.00	0.00
10,600.0	40.52	359.54	10,559.2	-9.6	275.9	-1.9	10.00	10.00	0.00
10,650.0	45.52	359.54	10,595.8	24.5	275.6	32.2	10.00	10.00	0.00
10,669.5	47.47	359.54	10,609.2	38.7	275.5	46.4	10.00	10.00	0.00
FTP(Getty 5 FC #501H)									
10,700.0	50.52	359.54	10,629.2	61.6	275.3	69.3	10.00	10.00	0.00
10,750.0	55.52	359.54	10,659.3	101.6	275.0	109.2	10.00	10.00	0.00
10,800.0	60.52	359.54	10,685.8	144.0	274.6	151.6	10.00	10.00	0.00
10,850.0	65.52	359.54	10,708.4	188.5	274.3	196.1	10.00	10.00	0.00
10,900.0	70.52	359.54	10,727.2	234.9	273.9	242.5	10.00	10.00	0.00
10,950.0	75.52	359.54	10,741.8	282.7	273.5	290.2	10.00	10.00	0.00
11,000.0	80.52	359.54	10,752.1	331.5	273.1	339.1	10.00	10.00	0.00
11,050.0	85.52	359.54	10,758.2	381.2	272.7	388.7	10.00	10.00	0.00
11,094.8	90.00	359.54	10,760.0	425.9	272.4	433.4	10.00	10.00	0.00
11,100.0	90.00	359.54	10,760.0	431.1	272.3	438.6	0.00	0.00	0.00
11,200.0	90.00	359.54	10,760.0	531.1	271.5	538.5	0.00	0.00	0.00
11,300.0	90.00	359.54	10,760.0	631.1	270.7	638.5	0.00	0.00	0.00
11,400.0	90.00	359.54	10,760.0	731.1	269.9	738.4	0.00	0.00	0.00
11,500.0	90.00	359.54	10,760.0	831.1	269.1	838.3	0.00	0.00	0.00
11,600.0	90.00	359.54	10,760.0	931.1	268.3	938.3	0.00	0.00	0.00
11,700.0	90.00	359.54	10,760.0	1,031.1	267.4	1,038.2	0.00	0.00	0.00
11,800.0	90.00	359.54	10,760.0	1,131.1	266.6	1,138.1	0.00	0.00	0.00
11,900.0	90.00	359.54	10,760.0	1,231.1	265.8	1,238.1	0.00	0.00	0.00
12,000.0	90.00	359.54	10,760.0	1,331.1	265.0	1,338.0	0.00	0.00	0.00
12,100.0	90.00	359.54	10,760.0	1,431.1	264.2	1,437.9	0.00	0.00	0.00
12,200.0	90.00	359.54	10,760.0	1,531.1	263.4	1,537.9	0.00	0.00	0.00
12,300.0	90.00	359.54	10,760.0	1,631.1	262.6	1,637.8	0.00	0.00	0.00
12,400.0	90.00	359.54	10,760.0	1,731.1	261.8	1,737.7	0.00	0.00	0.00
12,500.0	90.00	359.54	10,760.0	1,831.1	261.0	1,837.7	0.00	0.00	0.00
12,600.0	90.00	359.54	10,760.0	1,931.1	260.1	1,937.6	0.00	0.00	0.00
12,700.0	90.00	359.54	10,760.0	2,031.1	259.3	2,037.5	0.00	0.00	0.00
12,800.0	90.00	359.54	10,760.0	2,131.1	258.5	2,137.5	0.00	0.00	0.00
12,900.0	90.00	359.54	10,760.0	2,231.1	257.7	2,237.4	0.00	0.00	0.00
13,000.0	90.00	359.54	10,760.0	2,331.1	256.9	2,337.3	0.00	0.00	0.00
13,100.0	90.00	359.54	10,760.0	2,431.0	256.1	2,437.3	0.00	0.00	0.00
13,200.0	90.00	359.54	10,760.0	2,531.0	255.3	2,537.2	0.00	0.00	0.00
13,300.0	90.00	359.54	10,760.0	2,631.0	254.5	2,637.1	0.00	0.00	0.00
13,400.0	90.00	359.54	10,760.0	2,731.0	253.7	2,737.1	0.00	0.00	0.00
13,500.0	90.00	359.54	10,760.0	2,831.0	252.8	2,837.0	0.00	0.00	0.00
13,600.0	90.00	359.54	10,760.0	2,931.0	252.0	2,937.0	0.00	0.00	0.00
13,700.0	90.00	359.54	10,760.0	3,031.0	251.2	3,036.9	0.00	0.00	0.00
13,800.0	90.00	359.54	10,760.0	3,131.0	250.4	3,136.8	0.00	0.00	0.00
13,900.0	90.00	359.54	10,760.0	3,231.0	249.6	3,236.8	0.00	0.00	0.00
14,000.0	90.00	359.54	10,760.0	3,331.0	248.8	3,336.7	0.00	0.00	0.00
14,100.0	90.00	359.54	10,760.0	3,431.0	248.0	3,436.6	0.00	0.00	0.00
14,200.0	90.00	359.54	10,760.0	3,531.0	247.2	3,536.6	0.00	0.00	0.00
14,300.0	90.00	359.54	10,760.0	3,631.0	246.4	3,636.5	0.00	0.00	0.00



Planning Report

Database: EDM 5000.14
 Company: EOG Resources - Midland
 Project: Lea County, NM (NAD 83 NME)
 Site: Getty 5 Fed Com
 Well: #501H
 Wellbore: OH
 Design: Plan #0.2

Local Co-ordinate Reference: Well #501H
 TVD Reference: KB = 25 @ 3463.0usft
 MD Reference: KB = 25 @ 3463.0usft
 North Reference: Grid
 Survey Calculation Method: Minimum Curvature

Planned Survey

Measured Depth (usft)	Inclination (°)	Azimuth (°)	Vertical Depth (usft)	+N/-S (usft)	+E/-W (usft)	Vertical Section (usft)	Dogleg Rate (°/100usft)	Build Rate (°/100usft)	Turn Rate (°/100usft)
14,400.0	90.00	359.54	10,760.0	3,731.0	245.5	3,736.4	0.00	0.00	0.00
14,500.0	90.00	359.54	10,760.0	3,831.0	244.7	3,836.4	0.00	0.00	0.00
14,600.0	90.00	359.54	10,760.0	3,931.0	243.9	3,936.3	0.00	0.00	0.00
14,700.0	90.00	359.54	10,760.0	4,031.0	243.1	4,036.2	0.00	0.00	0.00
14,800.0	90.00	359.54	10,760.0	4,131.0	242.3	4,136.2	0.00	0.00	0.00
14,900.0	90.00	359.54	10,760.0	4,231.0	241.5	4,236.1	0.00	0.00	0.00
15,000.0	90.00	359.54	10,760.0	4,331.0	240.7	4,336.0	0.00	0.00	0.00
15,100.0	90.00	359.54	10,760.0	4,431.0	239.9	4,436.0	0.00	0.00	0.00
15,200.0	90.00	359.54	10,760.0	4,531.0	239.1	4,535.9	0.00	0.00	0.00
15,300.0	90.00	359.54	10,760.0	4,631.0	238.2	4,635.8	0.00	0.00	0.00
15,400.0	90.00	359.54	10,760.0	4,731.0	237.4	4,735.8	0.00	0.00	0.00
15,500.0	90.00	359.54	10,760.0	4,831.0	236.6	4,835.7	0.00	0.00	0.00
15,600.0	90.00	359.54	10,760.0	4,931.0	235.8	4,935.6	0.00	0.00	0.00
15,700.0	90.00	359.54	10,760.0	5,031.0	235.0	5,035.6	0.00	0.00	0.00
15,800.0	90.00	359.54	10,760.0	5,131.0	234.2	5,135.5	0.00	0.00	0.00
15,900.0	90.00	359.54	10,760.0	5,231.0	233.4	5,235.4	0.00	0.00	0.00
16,000.0	90.00	359.54	10,760.0	5,331.0	232.6	5,335.4	0.00	0.00	0.00
16,100.0	90.00	359.54	10,760.0	5,430.9	231.8	5,435.3	0.00	0.00	0.00
16,200.0	90.00	359.54	10,760.0	5,530.9	230.9	5,535.2	0.00	0.00	0.00
16,300.0	90.00	359.54	10,760.0	5,630.9	230.1	5,635.2	0.00	0.00	0.00
16,400.0	90.00	359.54	10,760.0	5,730.9	229.3	5,735.1	0.00	0.00	0.00
16,500.0	90.00	359.54	10,760.0	5,830.9	228.5	5,835.1	0.00	0.00	0.00
16,600.0	90.00	359.54	10,760.0	5,930.9	227.7	5,935.0	0.00	0.00	0.00
16,700.0	90.00	359.54	10,760.0	6,030.9	226.9	6,034.9	0.00	0.00	0.00
16,800.0	90.00	359.54	10,760.0	6,130.9	226.1	6,134.9	0.00	0.00	0.00
16,900.0	90.00	359.54	10,760.0	6,230.9	225.3	6,234.8	0.00	0.00	0.00
17,000.0	90.00	359.54	10,760.0	6,330.9	224.4	6,334.7	0.00	0.00	0.00
17,100.0	90.00	359.54	10,760.0	6,430.9	223.6	6,434.7	0.00	0.00	0.00
17,200.0	90.00	359.54	10,760.0	6,530.9	222.8	6,534.6	0.00	0.00	0.00
17,300.0	90.00	359.54	10,760.0	6,630.9	222.0	6,634.5	0.00	0.00	0.00
17,400.0	90.00	359.54	10,760.0	6,730.9	221.2	6,734.5	0.00	0.00	0.00
17,500.0	90.00	359.54	10,760.0	6,830.9	220.4	6,834.4	0.00	0.00	0.00
17,600.0	90.00	359.54	10,760.0	6,930.9	219.6	6,934.3	0.00	0.00	0.00
17,700.0	90.00	359.54	10,760.0	7,030.9	218.8	7,034.3	0.00	0.00	0.00
17,800.0	90.00	359.54	10,760.0	7,130.9	218.0	7,134.2	0.00	0.00	0.00
17,900.0	90.00	359.54	10,760.0	7,230.9	217.1	7,234.1	0.00	0.00	0.00
18,000.0	90.00	359.54	10,760.0	7,330.9	216.3	7,334.1	0.00	0.00	0.00
18,100.0	90.00	359.54	10,760.0	7,430.9	215.5	7,434.0	0.00	0.00	0.00
18,200.0	90.00	359.54	10,760.0	7,530.9	214.7	7,533.9	0.00	0.00	0.00
18,288.1	90.00	359.54	10,760.0	7,619.0	214.0	7,622.0	0.00	0.00	0.00

PBHL(Getty 5 FC #501H)



Planning Report

Database: EDM 5000.14
 Company: EOG Resources - Midland
 Project: Lea County, NM (NAD 83 NME)
 Site: Getty 5 Fed Com
 Well: #501H
 Wellbore: OH
 Design: Plan #0.2

Local Co-ordinate Reference: Well #501H
 TVD Reference: KB = 25 @ 3463.0usft
 MD Reference: KB = 25 @ 3463.0usft
 North Reference: Grid
 Survey Calculation Method: Minimum Curvature

Design Targets									
Target Name	Dip Angle	Dip Dir.	TVD	+N/-S	+E/-W	Northing	Easting	Latitude	Longitude
- hit/miss target	(°)	(°)	(usft)	(usft)	(usft)	(usft)	(usft)		
- Shape									
KOP(Getty 5 FC #501H) - plan hits target center - Point	0.00	0.01	10,187.0	-147.0	277.0	420,016.00	772,369.00	32° 9' 9.002 N	103° 35' 12.526 W
PBHL(Getty 5 FC #501H) - plan hits target center - Point	0.00	0.01	10,760.0	7,619.0	214.0	427,782.00	772,306.00	32° 10' 25.853 N	103° 35' 12.632 W
FTP(Getty 5 FC #501H) - plan misses target center by 202.8usft at 10669.5usft MD (10609.2 TVD, 38.7 N, 275.5 E) - Point	0.00	0.01	10,760.0	-97.0	277.0	420,066.00	772,369.00	32° 9' 9.497 N	103° 35' 12.522 W



Lea County, NM (NAD 83 NME)

Getty 5 Fed Com #501H

Plan #0.2

PROJECT DETAILS: Lea County, NM (NAD 83 NME)

Geodetic System: US State Plane 1983
 Datum: North American Datum 1983
 Ellipsoid: GR8 1980
 Zone: New Mexico Eastern Zone
 System Datum: Mean Sea Level

WELL DETAILS: #501H

KB = 35 @ 3443.0usft 3439.0
 Northing 420163.00 Easting 772092.00 Latitude 32° 9' 10.476 N Longitude 103° 35' 16.736 W



To convert a Magnetic Direction to a Grid Direction, Add 6.40°
 To convert a Magnetic Direction to a True Direction, Add 6.79° East
 To convert a True Direction to a Grid Direction, Subtract 0.39°

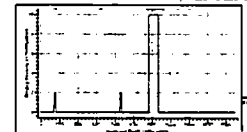
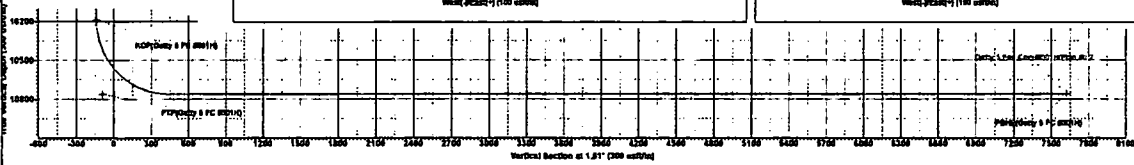
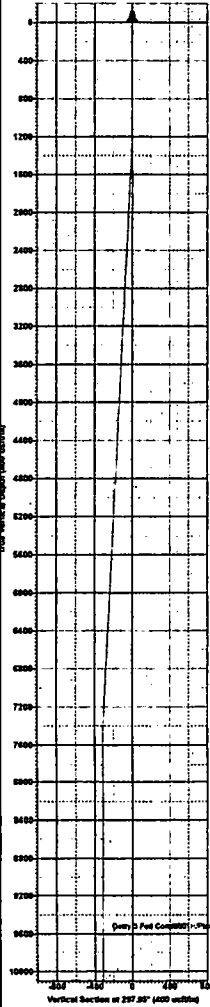
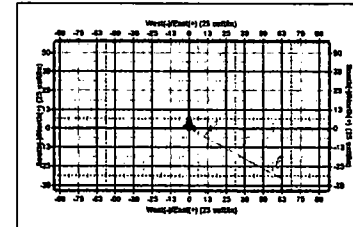
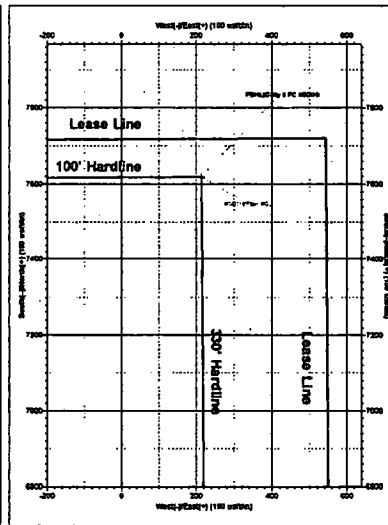
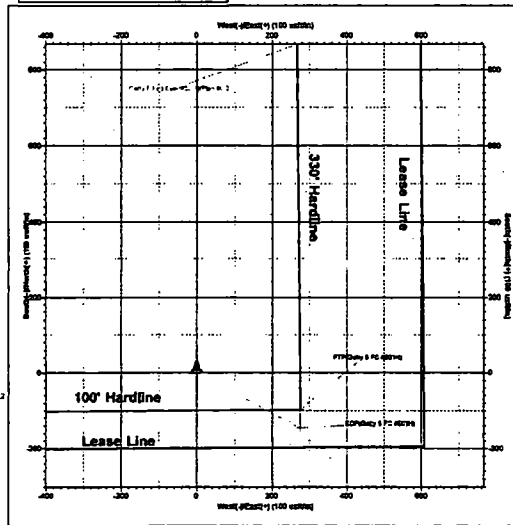
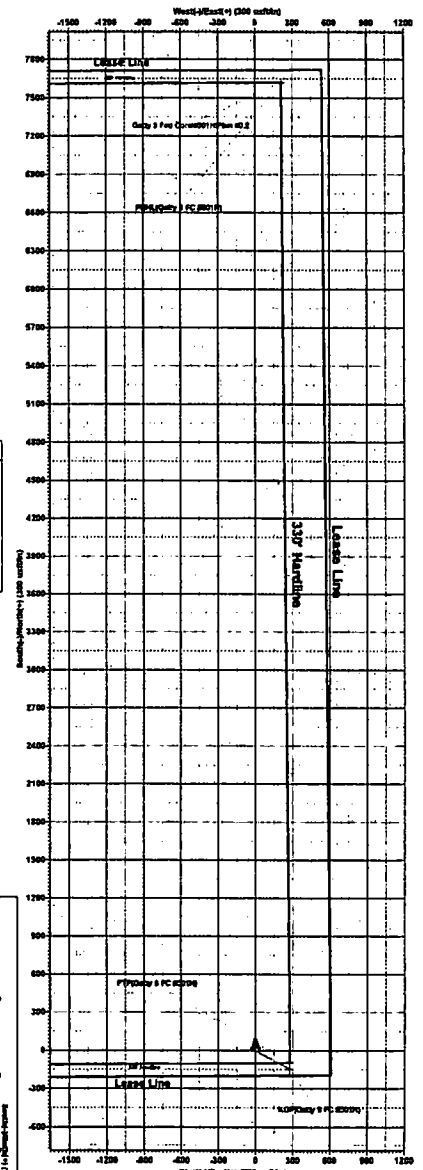
SECTION DETAILS

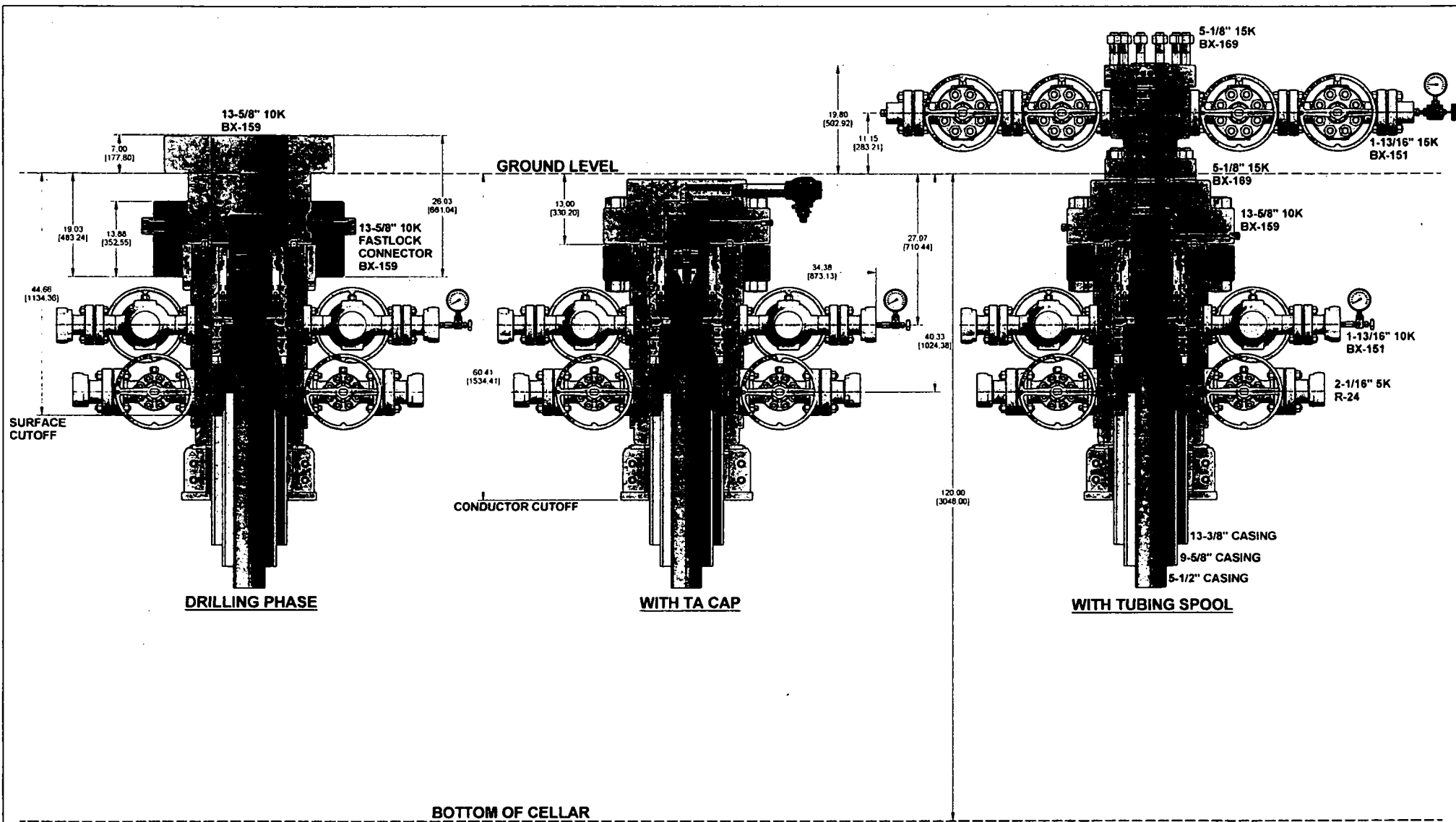
Sec	MD	Inc	Azi	TVD	+N-S	+E-W	Dleg	TFace	VSect	Target
1	0.0	0.00	0.00	0.0	0.0	0.0	0.00	0.00	0.0	
2	1200.0	0.00	0.00	1200.0	0.0	0.0	0.00	0.00	0.0	
3	1344.1	2.89	117.95	1344.0	-1.7	3.2	2.00	117.95	-1.6	
4	7438.0	2.89	117.95	7431.0	-145.3	273.8	0.00	0.00	-137.6	
5	7582.0	0.00	0.82	7675.0	-147.0	277.0	2.00	180.00	-139.2	
6	10194.8	0.00	0.82	10187.0	-147.0	277.0	0.00	0.00	-139.2	KOP(Getty 5 FC #501H)
7	11094.8	90.00	330.54	10760.0	425.9	272.4	10.00	359.54	433.4	
8	18288.1	90.00	330.54	10780.0	7619.0	214.0	0.00	0.00	7822.0	PEHL(Getty 5 FC #501H)

CASING DETAILS
 No casing data is available

WELLBORE TARGET DETAILS (MAP CO-ORDINATES)

Name	TVD	+N-S	+E-W	Northing	Easting
KOP(Getty 5 FC #501H)	10187.0	-147.0	277.0	420918.00	772389.00
PEHL(Getty 5 FC #501H)	10760.0	7619.0	214.0	421782.00	772308.00
FTF(Getty 5 FC #501H)	10780.0	-87.0	277.0	420968.00	772393.00





		DESCRIBED BY INCHES (DIMENSIONS)	UNLESS OTHERWISE SPECIFIED TOLERANCES ARE AS SHOWN	SURFACE TREATMENT DO NOT SCALE	CONFIDENTIAL
		THIRD ANGLE	FINISHES UNLESS OTHERWISE SPECIFIED	MATERIALS UNLESS OTHERWISE SPECIFIED	CAMERON A Schlumberger Company
DESIGNER: [Signature] DATE: 8 Nov 18	CHECKED BY: [Signature] DATE: 8 Nov 18	APPROVED BY: [Signature] DATE: 8 Nov 18	DRAWN BY: [Signature] DATE: 8 Nov 18	PROJECT: EOG RESOURCES, INC 13-5/8" 10K MN-DS WELLHEAD 13-3/8" X 9-5/8" X 5-1/2"	SURFACE SYSTEMS
ESTIMATOR: [Signature] DATE: 8 Nov 18	APPROVER: [Signature] DATE: 8 Nov 18	APPROVER NAME: [Signature] DATE: 8 Nov 18	APPROVER: [Signature] DATE: 8 Nov 18	SHEET: 1-1 SD-052491-19-07	01