

HOBBS OCD  
UNITED STATES  
DEPARTMENT OF THE INTERIOR  
BUREAU OF LAND MANAGEMENT  
OCD Hobbs  
WELL COMPLETION OR RECOMPLETION REPORT AND LOGFORM APPROVED  
OMB No. 1004-0137  
Expires: July 31, 2010

5. Lease Serial No.  
NMNM114992

6. If Indian, Allottee or Tribe Name

7. Unit or CA Agreement Name and No.

8. Lease Name and Well No.  
FIGHTING OKRA 18-19 FED 5H

9. API Well No.  
30-025-44427-00-S1

10. Field and Pool, or Exploratory  
WC025G09S253336D-UPPER WC

11. Sec., T., R., M., or Block and Survey  
or Area Sec 18 T26S R34E Mer NMP

12. County or Parish  
LEA

13. State  
NM

14. Date Spudded  
04/24/2018

15. Date T.D. Reached  
07/11/2018

16. Date Completed  
☐ D & A ☒ Ready to Prod.  
02/03/2019

17. Elevations (DF, KB, RT, GL)\*  
3365 GL

18. Total Depth: MD 22906 TVD 12804

19. Plug Back T.D.: MD 22805 TVD

20. Depth Bridge Plug Set: MD TVD

21. Type Electric & Other Mechanical Logs Run (Submit copy of each)  
CBL

22. Was well cored? ☒ No ☐ Yes (Submit analysis)  
Was DST run? ☒ No ☐ Yes (Submit analysis)  
Directional Survey? ☐ No ☒ Yes (Submit analysis)

## 23. Casing and Liner Record (Report all strings set in well)

Hole Size	Size/Grade	Wt. (#/ft.)	Top (MD)	Bottom (MD)	Stage Cementer Depth	No. of Sk. & Type of Cement	Slurry Vol. (BBL)	Cement Top*	Amount Pulled
14.750	10.750 J-55	45.5	0	900		995		0	349
9.875	7.625 P-110	29.7	0	13048		1011		0	355
6.750	5.500 P-110	20.0	0	22891		1165		11794	0

## 24. Tubing Record

Size	Depth Set (MD)	Packer Depth (MD)	Size	Depth Set (MD)	Packer Depth (MD)	Size	Depth Set (MD)	Packer Depth (MD)

## 25. Producing Intervals

Formation	Top	Bottom	Perforated Interval	Size	No. Holes	Perf. Status
A) WOLFCAMP	12999	22701	12999 TO 22701		1200	OPEN
B)						
C)						
D)						

## 26. Perforation Record

## 27. Acid, Fracture, Treatment, Cement Squeeze, Etc.

Depth Interval	Amount and Type of Material
12999 TO 22701	24,712,905# PROP, 0 GAL ACID

## 28. Production - Interval A

Date First Produced	Test Date	Hours Tested	Test Production	Oil BBL	Gas MCF	Water BBL	Oil Gravity Corr. API	Gas Gravity	Production Method
02/08/2019	02/23/2019	24	→	2534.0	3945.0	5712.0			FLows FROM WELL
Choke Size	Tbg. Press. Flwg. SI	Csg. Press. 1355.0	24 Hr. Rate →	Oil BBL 2534	Gas MCF 3945	Water BBL 5712	Gas:Oil Ratio 1557	Well Status PQW	

## 28a. Production - Interval B

Date First Produced	Test Date	Hours Tested	Test Production	Oil BBL	Gas MCF	Water BBL	Oil Gravity Corr. API	Gas Gravity	Production Method
			→						
Choke Size	Tbg. Press. Flwg. SI	Csg. Press.	24 Hr. Rate →	Oil BBL	Gas MCF	Water BBL	Gas:Oil Ratio	Well Status	

(See Instructions and spaces for additional data on reverse side)

ELECTRONIC SUBMISSION #457833 VERIFIED BY THE BLM WELL INFORMATION SYSTEM

\*\* BLM REVISED \*\* BLM REVISED \*\* BLM REVISED \*\* BLM REVISED \*\* BLM REVISED \*\*

Reclamation Due: 8/3/2019

ACCEPTED FOR RECORD  
JUL 20 2019  
BUREAU OF LAND MANAGEMENT  
CARLSBAD FIELD OFFICE

## 28b. Production - Interval C

Date First Produced	Test Date	Hours Tested	Test Production →	Oil BBL	Gas MCF	Water BBL	Oil Gravity Corr. API	Gas Gravity	Production Method
Choke Size	Tbg. Press. Flwg. SI	Csg. Press.	24 Hr. Rate →	Oil BBL	Gas MCF	Water BBL	Gas:Oil Ratio	Well Status	

## 28c. Production - Interval D

Date First Produced	Test Date	Hours Tested	Test Production →	Oil BBL	Gas MCF	Water BBL	Oil Gravity Corr. API	Gas Gravity	Production Method
Choke Size	Tbg. Press. Flwg. SI	Csg. Press.	24 Hr. Rate →	Oil BBL	Gas MCF	Water BBL	Gas:Oil Ratio	Well Status	

29. Disposition of Gas(Sold, used for fuel, vented, etc.)  
SOLD

## 30. Summary of Porous Zones (Include Aquifers):

Show all important zones of porosity and contents thereof: Cored intervals and all drill-stem tests, including depth interval tested, cushion used, time tool open, flowing and shut-in pressures and recoveries.

## 31. Formation (Log) Markers

Formation	Top	Bottom	Descriptions, Contents, etc.	Name	Top Meas. Depth
RUSTLER	726	1028	BARREN	RUSTLER	726
SALADO	1028	5098	BARREN	SALADO	1028
BASE OF SALT	5098	5310	BARREN	BASE OF SALT	5098
DELAWARE	5310	9562	OIL/GAS	DELAWARE	5310
BONE SPRING	9562	12623	OIL/GAS	BONE SPRING	9562
WOLFCAMP	12623		OIL/GAS	WOLFCAMP	12623

## 32. Additional remarks (include plugging procedure):

Intermediate casing as follows: TD 9-7/8? hole @ 12,235? & 8-3/4? hole @ 13,063?. RIH w/ 269 jts 7-5/8? 29.7# P-110 BTC csg & 24 jts 7-5/8? 29.70# P-110 USS LIBERTY FMJ csg, set @ 13,048?.

Production casing as follows: TD 6-3/4? hole @ 22,906?. RIH w/ 270 jts 5-1/2? 20# P-110 VAMTOP HT csg, 235 jts 5-1/2? 20# P-110 VAMSG, & 2 jts 4-1/2? 13.5# P-110 BTC, set @ 22,891?.

## 33. Circle enclosed attachments:

- |   |                    |               |                       |
|---|--------------------|---------------|-----------------------|
| 1. Electrical/Mechanical Logs (1 full set req'd.)     | 2. Geologic Report | 3. DST Report | 4. Directional Survey |
| 5. Sundry Notice for plugging and cement verification | 6. Core Analysis   | 7. Other:     |                       |

## 34. I hereby certify that the foregoing and attached information is complete and correct as determined from all available records (see attached instructions):

Electronic Submission #457833 Verified by the BLM Well Information System.  
For DEVON ENERGY PRODUCTION COM LP, sent to the Hobbs  
Committed to AFMSS for processing by DEBORAH HAM on 07/16/2019 (19DMH0144SE)

Name (please print) REBECCA DEALTitle REGULATORY ANALYST

Signature \_\_\_\_\_ (Electronic Submission)

Date 03/13/2019

Title 18 U.S.C. Section 1001 and Title 43 U.S.C. Section 1212, make it a crime for any person knowingly and willfully to make to any department or agency of the United States any false, fictitious or fraudulent statements or representations as to any matter within its jurisdiction.

**\*\* REVISED \*\* REVISED \*\* REVISED \*\* REVISED \*\* REVISED \*\* REVISED \*\* REVISED \*\* REVISED \*\***

District I  
1625 N. French Dr., Hobbs, NM 88240  
Phone: (575) 393-6161 Fax: (575) 393-0720  
District II  
811 S. First St., Artesia, NM 88210  
Phone: (575) 748-1283 Fax: (575) 748-9720  
District III  
1000 Rio Brazos Road, Aztec, NM 87410  
Phone: (505) 334-6178 Fax: (505) 334-6170  
District IV  
1220 S. St. Francis Dr., Santa Fe, NM 87505  
Phone: (505) 476-3460 Fax: (505) 476-3462

State of New Mexico  
Energy, Minerals & Natural Resources Department  
OIL CONSERVATION DIVISION  
1220 South St. Francis Dr.  
Santa Fe, NM 87505

Form C-102  
Revised August 1, 2011  
Submit one copy to appropriate  
District Office  
☐ AMENDED REPORT

WELL LOCATION AND ACREAGE DEDICATION PLAT

<sup>1</sup> API Number <b>30-025-44427</b>	<sup>2</sup> Pool Code <b>98094</b>	<sup>3</sup> Pool Name <b>WC-025 G-09 S253336D; UWC</b>
<sup>4</sup> Property Code <b>315691</b>	<sup>5</sup> Property Name <b>FIGHTING OKRA 18-19 FED</b>	
<sup>7</sup> OGRID No. <b>6137</b>	<sup>8</sup> Operator Name <b>DEVON ENERGY PRODUCTION COMPANY, L.P.</b>	<sup>6</sup> Well Number <b>5H</b>
		<sup>9</sup> Elevation <b>3365.0</b>

<sup>10</sup> Surface Location

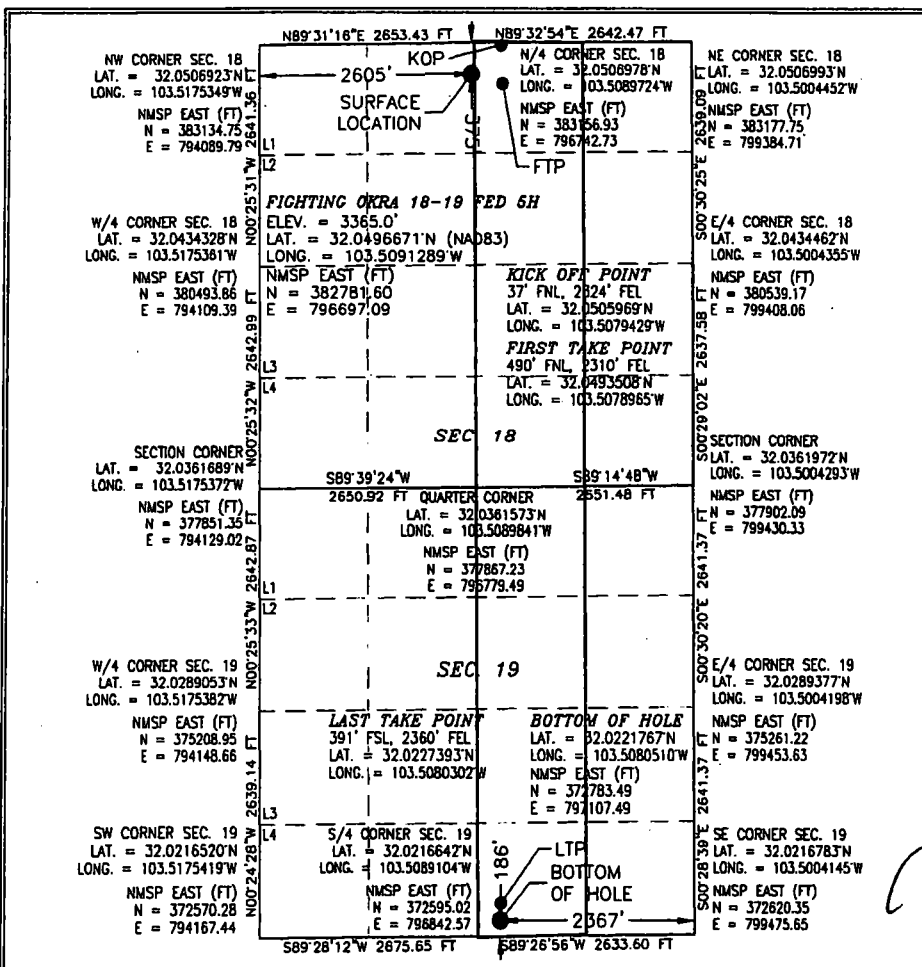
UL or lot no.	Section	Township	Range	Lot Idn	Feet from the	North/South line	Feet from the	East/West line	County
<b>C</b>	<b>18</b>	<b>26 S</b>	<b>34 E</b>		<b>375</b>	<b>NORTH</b>	<b>2605</b>	<b>WEST</b>	<b>LEA</b>

<sup>11</sup> Bottom Hole Location If Different From Surface

UL or lot no.	Section	Township	Range	Lot Idn	Feet from the	North/South line	Feet from the	East/West line	County
<b>O</b>	<b>19</b>	<b>26 S</b>	<b>34 E</b>		<b>186</b>	<b>SOUTH</b>	<b>2367</b>	<b>EAST</b>	<b>LEA</b>

<sup>12</sup> Dedicated Acres <b>320</b>	<sup>13</sup> Joint or Infill	<sup>14</sup> Consolidation Code	<sup>15</sup> Order No.
---	-------------------------------	----------------------------------	-------------------------

No allowable will be assigned to this completion until all interests have been consolidated or a non-standard unit has been approved by the division.



<sup>17</sup> OPERATOR CERTIFICATION

I hereby certify that the information contained herein is true and complete to the best of my knowledge and belief, and that this organization either owns a working interest or unleased mineral interest in the land including the proposed bottom hole location or has a right to drill this well at this location pursuant to a contract with an owner of such a mineral or working interest, or to a voluntary pooling agreement or a compulsory pooling order heretofore entered by the division.

Signature: *Rebecca Deal* Date: **3/10/2019**

Printed Name: **Rebecca Deal, Regulatory Analyst**

E-mail Address: **rebecca.deal@dvn.com**

<sup>18</sup> SURVEYOR CERTIFICATION

I hereby certify that the well location shown on this plat was plotted from field notes of actual surveys made by me or under my supervision, and that the same is true and correct to the best of my belief.

Date of Survey: **FEBRUARY 25, 2019**

Signature and Seal of Professional Surveyor: *[Signature]*  
Certificate Number: **2. FILMON F. JARAMILLO, PLS 12797**  
SURVEY NO. 5549