

HOBBS OCD

UNITED STATES  
DEPARTMENT OF THE INTERIOR  
BUREAU OF LAND MANAGEMENT  
OCD Hobbs  
WELL COMPLETION OR RECOMPLETION REPORT AND LOGFORM APPROVED  
OMB No. 1004-0137  
Expires: July 31, 2010

1a. Type of Well ☒ On Well ☐ Gas Well ☐ Dry ☐ Other

b. Type of Completion ☒ New Well ☐ Work Over ☐ Deepen ☐ Plug Back ☐ Diff. Resvr.  
Other \_\_\_\_\_

2. Name of Operator **DEVON ENERGY PRODUCTION COMPANY** Contact: **REBECCA DEAL**  
rebecca.deal@dvn.com

3. Address **333 WEST SHERIDAN AVENUE** 3a. Phone No. (include area code)  
**OKLAHOMA CITY, OK 73102** Ph: **405-228-8429**

4. Location of Well (Report location clearly and in accordance with Federal requirements)\*  
At surface **Sec 29 T22S R34E Mer NMP**  
**SESW 351FSL 2033FWL 32.356384 N Lat, 103.494095 W Lon**  
At top prod interval reported below **Sec 29 T22S R34E Mer NMP**  
**SESW 45FSL 2093FEL**  
At total depth **Sec 20 T22S R34E Mer NMP**  
**SWNE 2637FNL 2038FEL**

14. Date Spudded **09/08/2018** 15. Date T.D. Reached **10/03/2018** 16. Date Completed  
☐ D & A ☒ Ready to Prod.  
**01/15/2019**

18. Total Depth: **MD 18120** 19. Plug Back T.D.: **MD 18020** 20. Depth Bridge Plug Set: **MD**  
**TVD 10322** **TVD**

21. Type Electric & Other Mechanical Logs Run (Submit copy of each)  
**CBL**

22. Was well cored? ☒ No ☐ Yes (Submit analysis)  
Was DST run? ☒ No ☐ Yes (Submit analysis)  
Directional Survey? ☐ No ☒ Yes (Submit analysis)

## 23. Casing and Liner Record (Report all strings set in well)

Hole Size	Size/Grade	Wt. (#/ft.)	Top (MD)	Bottom (MD)	Stage Cementer Depth	No. of Sk. & Type of Cement	Slurry Vol. (BBL)	Cement Top*	Amount Pulled
20.000	16.000 J-55	75.0	0	1965		2293		0	158
13.500	11.750 L-80 HQ	65.0	0	3277		1740		0	855
10.625	8.625 L-80	32.0	0	5099	3626	1395		394	0
7.875	5.500 P110RY	17.0	0	18107		1500		3537	0

## 24. Tubing Record

Size	Depth Set (MD)	Packer Depth (MD)	Size	Depth Set (MD)	Packer Depth (MD)	Size	Depth Set (MD)	Packer Depth (MD)
2.875	10155							

## 25. Producing Intervals

Formation	Top	Bottom	Perforated Interval	Size	No. Holes	Perf. Status
A) BONE SPRING	10550	17978	10550 TO 17978		589	OPEN
B)						
C)						
D)						

## 26. Perforation Record

Depth Interval	Amount and Type of Material
10550 TO 17978	11,124,053# PROP, 24,570 GAL ACID

## 27. Acid, Fracture, Treatment, Cement Squeeze, Etc.

Date First Produced	Test Date	Hours Tested	Test Production	Oil BBL	Gas MCF	Water BBL	Oil Gravity Corr. API	Gas Gravity	Production Method
03/04/2019	04/01/2019	24	→	2273.0	2962.0	1073.0			FLows FROM WELL
Choke Size	Tbg. Press. Flwg. SI	Csg. Press.	24 Hr. Rate	Oil BBL	Gas MCF	Water BBL	Gas:Oil Ratio	Well Status	
	1958	458.0	→	2273	2962	1073	1303	POW	

## 28a. Production - Interval B

Date First Produced	Test Date	Hours Tested	Test Production	Oil BBL	Gas MCF	Water BBL	Oil Gravity Corr. API	Gas Gravity	Production Method
			→						
Choke Size	Tbg. Press. Flwg. SI	Csg. Press.	24 Hr. Rate	Oil BBL	Gas MCF	Water BBL	Gas:Oil Ratio	Well Status	
			→						

(See Instructions and spaces for additional data on reverse side)

ELECTRONIC SUBMISSION #462233 VERIFIED BY THE BLM WELL INFORMATION SYSTEM

\*\* BLM REVISED \*\* BLM REVISED \*\* BLM REVISED \*\* BLM REVISED \*\* BLM REVISED \*\*

Reclamation Due: 7/15/2019

ACCEPTED FOR RECORD  
JUL 20 2019  
BUREAU OF LAND MANAGEMENT  
CARLSBAD FIELD OFFICE

KZ

## 28b. Production - Interval C

Date First Produced	Test Date	Hours Tested	Test Production →	Oil BBL	Gas MCF	Water BBL	Oil Gravity Corr. API	Gas Gravity	Production Method
Choke Size	Tbg. Press. Flwg. SI	Csg. Press.	24 Hr. Rate →	Oil BBL	Gas MCF	Water BBL	Gas:Oil Ratio	Well Status	

## 28c. Production - Interval D

Date First Produced	Test Date	Hours Tested	Test Production →	Oil BBL	Gas MCF	Water BBL	Oil Gravity Corr. API	Gas Gravity	Production Method
Choke Size	Tbg. Press. Flwg. SI	Csg. Press.	24 Hr. Rate →	Oil BBL	Gas MCF	Water BBL	Gas:Oil Ratio	Well Status	

29. Disposition of Gas(Sold, used for fuel, vented, etc.)  
SOLD

## 30. Summary of Porous Zones (Include Aquifers):

Show all important zones of porosity and contents thereof: Cored intervals and all drill-stem tests, including depth interval tested, cushion used, time tool open, flowing and shut-in pressures and recoveries.

## 31. Formation (Log) Markers

Formation	Top	Bottom	Descriptions, Contents, etc.	Name	Top Meas. Depth
RUSTLER	2193	2463	BARREN	RUSTLER	2193
SALADO	2463	5000	BARREN	SALADO	2463
BASE OF SALT	5000	5030	BARREN	BASE OF SALT	5000
DELAWARE	5030	8472	OIL/GAS	DELAWARE	5030
BONE SPRING	8472		OIL/GAS	BONE SPRING	8472

32. Additional remarks (include plugging procedure):  
See attached as-drilled plat and directional survey

## 33. Circle enclosed attachments:

- |   |                    |               |                       |
|---|--------------------|---------------|-----------------------|
| 1. Electrical/Mechanical Logs (1 full set req'd.)     | 2. Geologic Report | 3. DST Report | 4. Directional Survey |
| 5. Sundry Notice for plugging and cement verification | 6. Core Analysis   | 7 Other:      |                       |

34. I hereby certify that the foregoing and attached information is complete and correct as determined from all available records (see attached instructions):

Electronic Submission #462233 Verified by the BLM Well Information System.  
For DEVON ENERGY PRODUCTION COMPAN, sent to the Hobbs  
Committed to AFMSS for processing by DEBORAH HAM on 07/16/2019 (19DMH0150SE)

Name (please print) REBECCA DEAL

Title REGULATORY ANALYST

Signature \_\_\_\_\_ (Electronic Submission)

Date 04/22/2019

Title 18 U.S.C. Section 1001 and Title 43 U.S.C. Section 1212, make it a crime for any person knowingly and willfully to make to any department or agency of the United States any false, fictitious or fraudulent statements or representations as to any matter within its jurisdiction.

**\*\* REVISED \*\* REVISED \*\* REVISED \*\* REVISED \*\* REVISED \*\* REVISED \*\* REVISED \*\* REVISED \*\***

DISTRICT I  
1825 N. FRENCH DR., HOBBES, NM 88240  
Phone: (505) 333-6181 Fax: (505) 333-0720

DISTRICT II  
811 S. FIRST ST., ARTESIA, NM 88210  
Phone: (505) 748-1283 Fax: (505) 748-0720

DISTRICT III  
1000 RIO BRAZOS RD., AZTEC, NM 87410  
Phone: (505) 334-6178 Fax: (505) 334-6170

DISTRICT IV  
1880 S. ST. FRANCIS DR., SANTA FE, NM 87505  
Phone: (505) 476-3460 Fax: (505) 476-3468

State of New Mexico  
Energy, Minerals & Natural Resources Department  
**OIL CONSERVATION DIVISION**  
1220 SOUTH ST. FRANCIS DR.  
Santa Fe, New Mexico 87505

Form C-102  
Revised August 1, 2011  
Submit one copy to appropriate  
District Office

☐ AMENDED REPORT

**WELL LOCATION AND ACREAGE DEDICATION PLAT**

API Number <b>30-025-45158</b>	Pool Code <b>97922</b>	Pool Name <b>WC-025 G-06 S223421L;BONE SPRING</b>
Property Code	Property Name <b>GAUCHO UNIT 29</b>	Well Number <b>152H</b>
OGRID No. <b>6137</b>	Operator Name <b>DEVON ENERGY PRODUCTION COMPANY, L.P.</b>	Elevation <b>3431.0'</b>

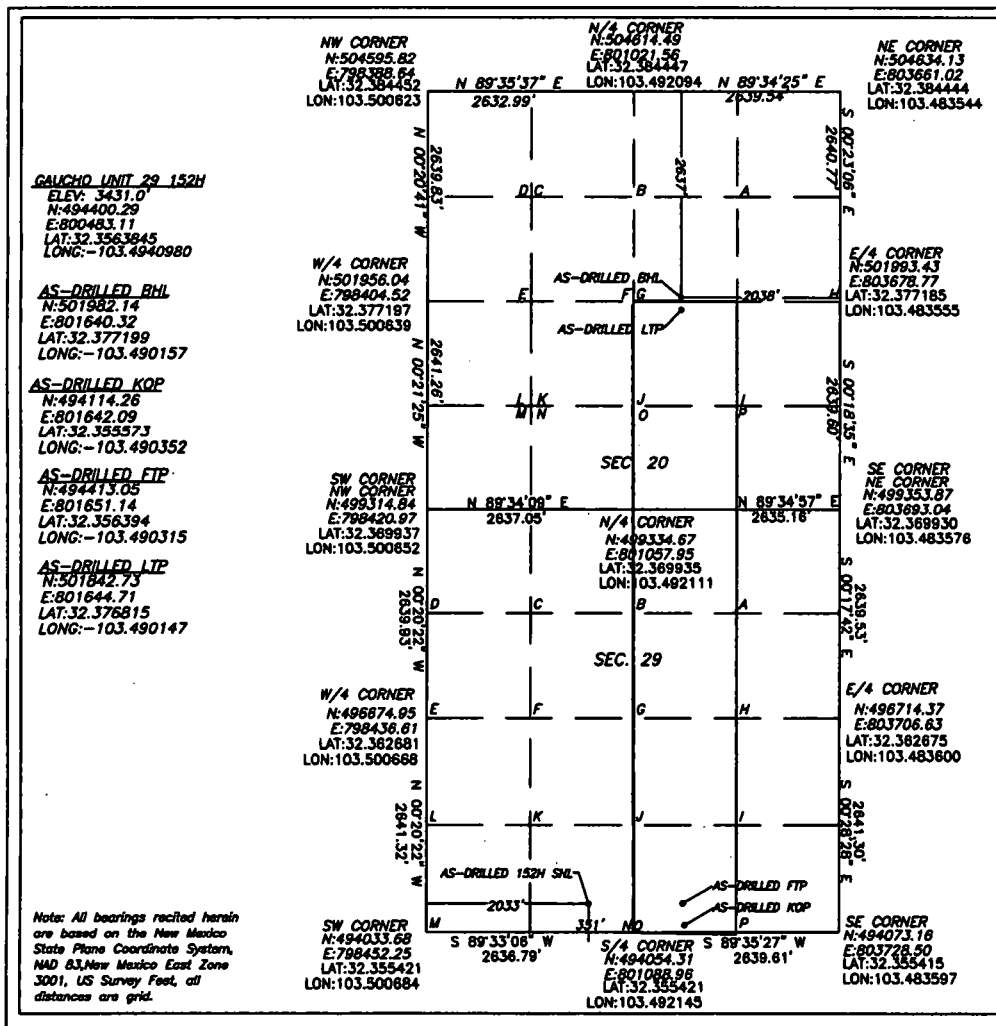
**Surface Location**

UL or lot No.	Section	Township	Range	Lot Idn	Feet from the	North/South line	Feet from the	East/West line	County
N	29	22-S	34-E		351	SOUTH	2033	WEST	LEA

**Bottom Hole Location If Different From Surface**

UL or lot No.	Section	Township	Range	Lot Idn	Feet from the	North/South line	Feet from the	East/West line	County
G	20	22-S	34-E		2637	NORTH	2038	EAST	LEA
Dedicated Acres <b>240</b>	Joint or Infill	Consolidation Code	Order No.						

**NO ALLOWABLE WILL BE ASSIGNED TO THIS COMPLETION UNTIL ALL INTERESTS HAVE BEEN CONSOLIDATED  
OR A NON-STANDARD UNIT HAS BEEN APPROVED BY THE DIVISION**



**OPERATOR CERTIFICATION**

I hereby certify that the information herein is true and complete to the best of my knowledge and belief, and that this organization either owns a working interest or unleased mineral interest in the land including the proposed bottom hole location or has a right to drill this well at this location pursuant to a contract with an owner of such mineral or working interest, or to a voluntary pooling agreement or a compulsory pooling order heretofore entered by the division.

Rebecca Deal 4/22/2019  
Signature Date

Rebecca Deal, Regulatory Analyst  
Printed Name

rebecca.deal@dvn.com  
E-mail Address

**SURVEYOR CERTIFICATION**

I hereby certify that the well location shown on this plat was plotted from field notes of actual surveys made by me or under my supervision, and that the same is true and correct to the best of my belief.

10/2018

Date of Survey

Signature & Seal of Professional Surveyor



04/18/19

Certificate No. 22404 B.L. LAMAN

W.O. # DRAWN BY: CM