

District I  
1625 N. French Dr., Hobbs, NM 88240  
Phone: (575) 393-6161 Fax: (575) 393-0720  
District II  
811 S. First St., Artesia, NM 88210  
Phone: (575) 748-1283 Fax: (575) 748-9720  
District III  
1000 Rio Brazos Road, Aztec, NM 87410  
Phone: (505) 334-6178 Fax: (505) 334-6170  
District IV  
1220 S. St. Francis Dr., Santa Fe, NM 87505  
Phone: (505) 476-3460 Fax: (505) 476-3462

State of New Mexico  
Energy, Minerals & Natural Resources  
Department  
OIL CONSERVATION DIVISION  
1220 South St. Francis Dr.  
Santa Fe, NM 87505

FORM C-102

Revised August 1, 2011

Submit one copy to appropriate

District Office

**HOBBS OCD**

SEP 11 2019

☐ AMENDED REPORT

**WELL LOCATION AND ACREAGE DEDICATION**

<sup>1</sup> API Number <b>30-025-45432</b>	<sup>2</sup> Pool Code <b>97958</b>	<sup>3</sup> Pool Name <b>WC-025 G-08 S233528D; LWR BONE SPRING</b>
<sup>4</sup> Property Code <b>321163</b>	<sup>5</sup> Property Name <b>IRVIN WALL STATE COM</b>	<sup>6</sup> Well Number <b>134H</b>
<sup>7</sup> GRID No. <b>228937</b>	<sup>8</sup> Operator Name <b>MATADOR PRODUCTION COMPANY</b>	<sup>9</sup> Elevation <b>3451'</b>

**<sup>10</sup>Surface Location**

UL or lot no. <b>P</b>	Section <b>32</b>	Township <b>23-S</b>	Range <b>35-E</b>	Lot Idn <b>-</b>	Feet from the <b>278'</b>	North/South line <b>SOUTH</b>	Feet from the <b>816'</b>	East/West line <b>EAST</b>	County <b>LEA</b>
---------------------------	----------------------	-------------------------	----------------------	---------------------	------------------------------	----------------------------------	------------------------------	-------------------------------	----------------------

**<sup>11</sup>Bottom Hole Location If Different From Surface**

UL or lot no. <b>A</b>	Section <b>32</b>	Township <b>23-S</b>	Range <b>35-E</b>	Lot Idn <b>-</b>	Feet from the <b>101'</b>	North/South line <b>NORTH</b>	Feet from the <b>372'</b>	East/West line <b>EAST</b>	County <b>LEA</b>
---------------------------	----------------------	-------------------------	----------------------	---------------------	------------------------------	----------------------------------	------------------------------	-------------------------------	----------------------

<sup>12</sup> Dedicated Acres <b>160</b>	<sup>13</sup> Joint or Infill	<sup>14</sup> Consolidation Code	<sup>15</sup> Order No.
---	-------------------------------	----------------------------------	-------------------------

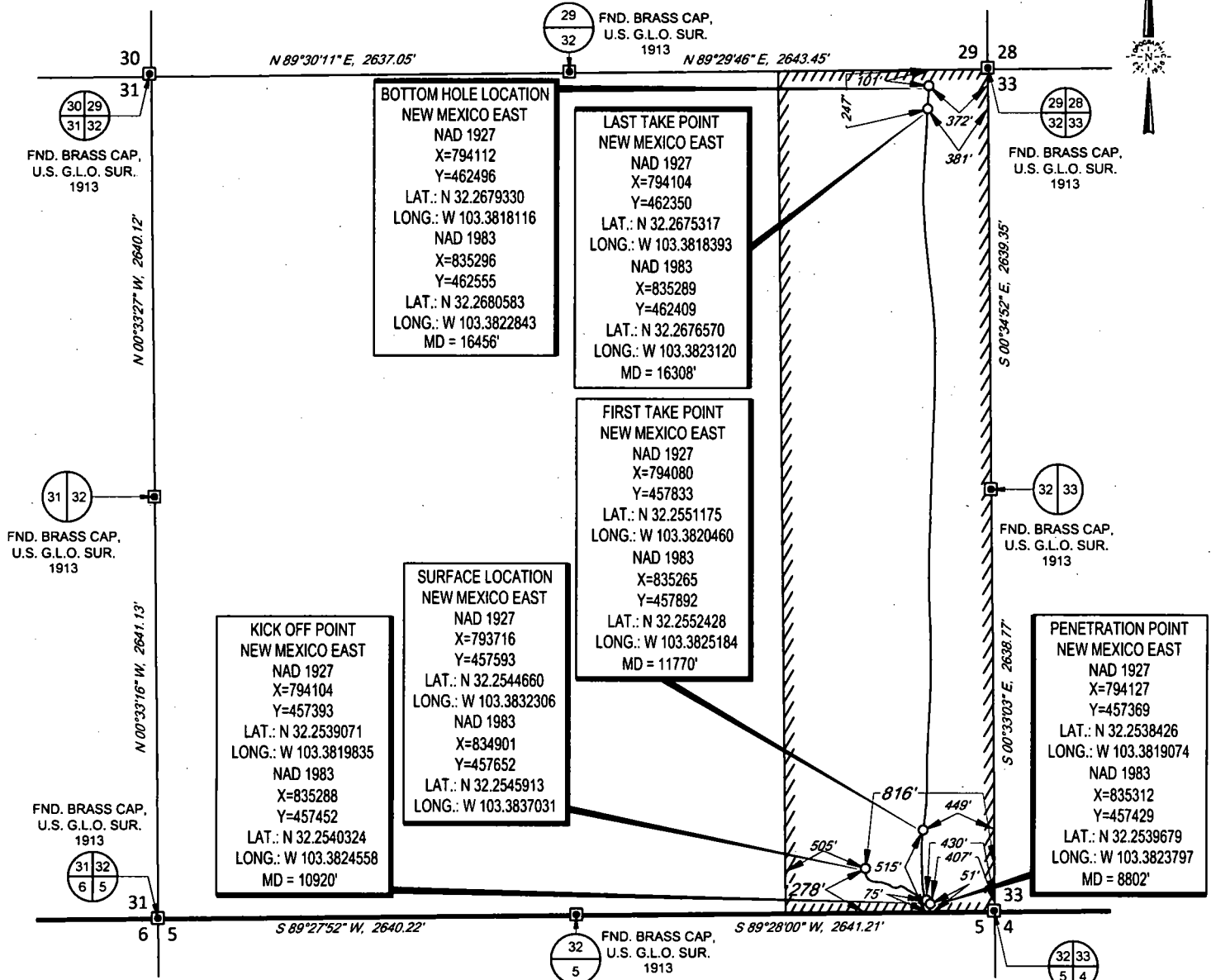
No allowable will be assigned to this completion until all interests have been consolidated or a non-standard unit has been approved by the division.

<b><sup>16</sup> BOTTOM HOLE LOCATION</b> NEW MEXICO EAST NAD 1927 X=794112 Y=462496 LAT.: N 32.2679330 LONG.: W 103.3818116 NAD 1983 X=835296 Y=462555 LAT.: N 32.2680583 LONG.: W 103.3822843 MD = 16456'	<b>LAST TAKE POINT</b> NEW MEXICO EAST NAD 1927 X=794104 Y=462350 LAT.: N 32.2675317 LONG.: W 103.3818393 NAD 1983 X=835289 Y=462409 LAT.: N 32.2676570 LONG.: W 103.3823120 MD = 16308'	<b>FIRST TAKE POINT</b> NEW MEXICO EAST NAD 1927 X=794080 Y=457833 LAT.: N 32.2551175 LONG.: W 103.3820460 NAD 1983 X=835265 Y=457892 LAT.: N 32.2552428 LONG.: W 103.3825184 MD = 11770'	<b>KICK OFF POINT</b> NEW MEXICO EAST NAD 1927 X=794104 Y=457393 LAT.: N 32.2539071 LONG.: W 103.3819835 NAD 1983 X=835288 Y=457452 LAT.: N 32.2540324 LONG.: W 103.3824558 MD = 10920'	<b>SURFACE LOCATION</b> NEW MEXICO EAST NAD 1927 X=793716 Y=457593 LAT.: N 32.2544660 LONG.: W 103.3832306 NAD 1983 X=834901 Y=457652 LAT.: N 32.2545913 LONG.: W 103.3837031	<b>PENETRATION POINT</b> NEW MEXICO EAST NAD 1927 X=794127 Y=457369 LAT.: N 32.2538426 LONG.: W 103.3819074 NAD 1983 X=835312 Y=457429 LAT.: N 32.2539679 LONG.: W 103.3823797 MD = 8802'	<b><sup>17</sup> OPERATOR CERTIFICATION</b> I hereby certify that the information contained herein is true and complete to the best of my knowledge and belief, and that this organization either owns a working interest or unleased mineral interest in the land including the proposed bottom hole location or has a right to drill this well at this location pursuant to a contract with an owner of such a mineral or working interest, or to a voluntary pooling agreement or a compulsory pooling order heretofore entered by the division.  <i>Sara Hartsfield</i> 8/13/19 Signature Date  Sara Hartsfield Printed Name  SHartsfield@matadorresources.com E-mail Address	<b><sup>18</sup> SURVEYOR CERTIFICATION</b> I hereby certify that the well location shown on this plat was plotted from field notes of actual surveys made by me or under my supervision, and that the same is true to the best of my belief.  11/28/2018 Date of Survey Signature and Seal  ANGEL M. DIAZ NEW MEXICO PROFESSIONAL SURVEYOR 25118 Certificate Number
---	--	---	---	--	---	---	---

SCALE: 1" = 1000'

0' 500' 1000'

SECTION 32, TOWNSHIP 23-S, RANGE 35-E, N.M.P.M.  
LEA COUNTY, NEW MEXICO



LEASE NAME & WELL NO.: IRVIN WALL STATE COM #134H  
SECTION 32 TWP 23-S RGE 35-E SURVEY N.M.P.M.  
COUNTY LEA STATE NM ELEVATION 3451'  
DESCRIPTION 278' FSL & 816' FEL



**TOPOGRAPHIC**  
LOYALTY INNOVATION LEGACY  
1400 EVERMAN PARKWAY, Ste. 146 • FT. WORTH, TEXAS 76140  
TELEPHONE: (817) 744-7512 • FAX: (817) 744-7554  
2903 NORTH BIG SPRING • MIDLAND, TEXAS 79705  
TELEPHONE: (432) 682-1653 OR (800) 767-1653 • FAX (432) 682-1743  
WWW.TOPOGRAPHIC.COM



Angel M. Baeza, P.S. No. 25116  
AUGUST 12, 2019

IRVIN WALL STATE COM #134H AS-DRILLED	REVISION:		NOTES:
	INT	DATE	
DATE: 08/09/2019			1. ORIGINAL DOCUMENT SIZE: 8.5" X 11" 2. ALL BEARINGS, DISTANCES, AND COORDINATE VALUES CONTAINED HEREIN ARE GRID BASED UPON THE NEW MEXICO COORDINATE SYSTEM OF 1983, EAST ZONE, U.S. SURVEY FEET. 3. THIS WELL LOCATION SHOWN HEREON HAS BEEN SURVEYED ON THE GROUND UNDER MY SUPERVISION AND PREPARED ACCORDING TO THE EVIDENCE FOUND AT THE TIME OF SURVEY, AND DATA PROVIDED BY MATADOR PRODUCTION COMPANY. THIS CERTIFICATION IS MADE AND LIMITED TO THOSE PERSONS OR ENTITIES SHOWN ON THE FACE OF THIS PLAT AND IS NON-TRANSFERABLE. THIS SURVEY IS CERTIFIED FOR THIS TRANSACTION ONLY.
FILE: AD_IRVIN_WALL_STATE_COM_134H			
DRAWN BY: MML			
SHEET: 1 OF 1			