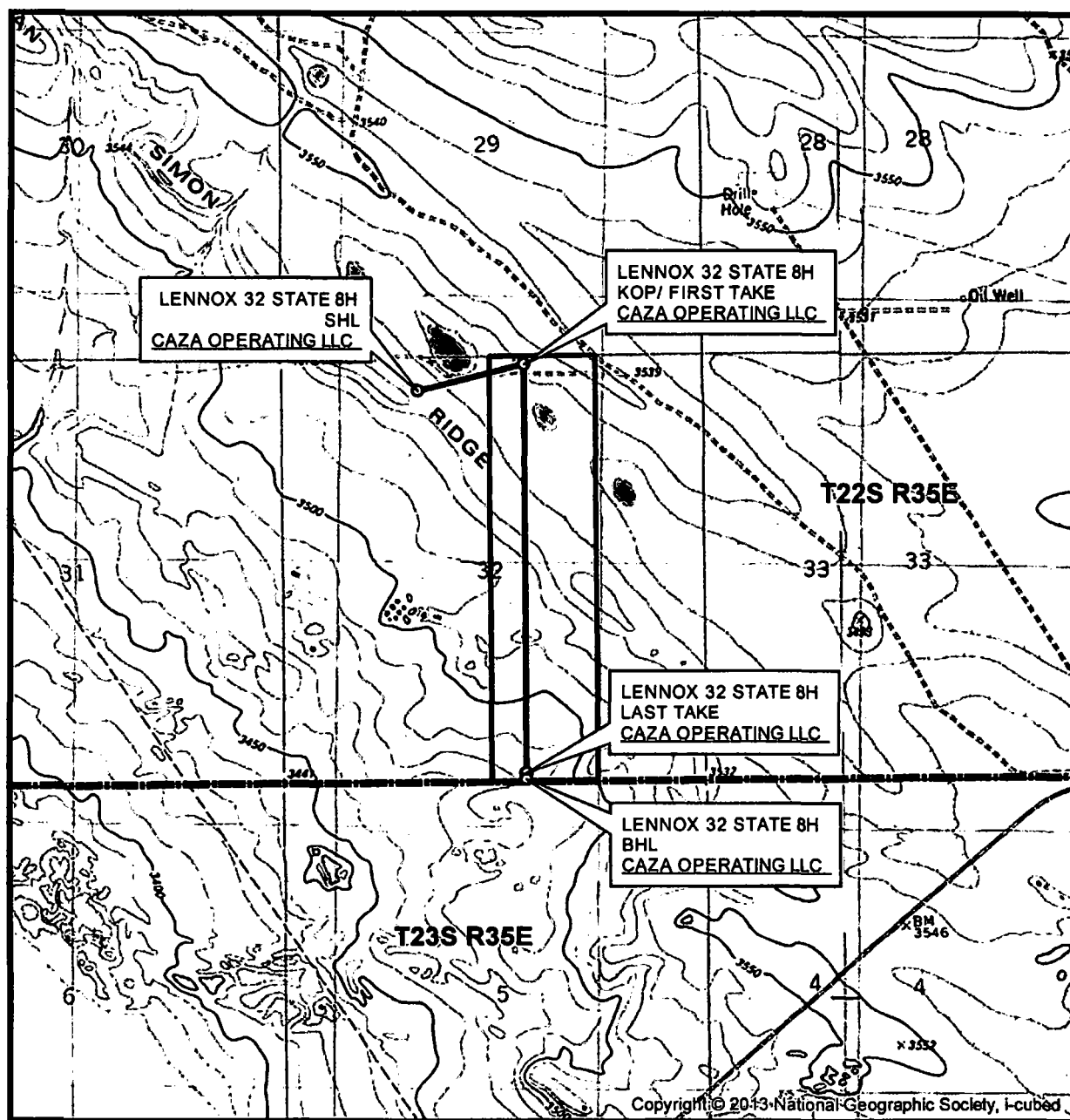


**Distances/areas relative to NAD 83 Combined Scale Factor: 0.99983935 Convergence: 00°30'07.11000"**

# LOCATION VERIFICATION MAP



SEC. 32 TWP. 22-S RGE. 35-E  
 SURVEY: N.M.P.M.  
 COUNTY: LEA  
 OPERATOR: CAZA OPERATING LLC  
 DESCRIPTION: 422' FNL & 1750' FWL  
 ELEVATION: 3534'  
 LEASE: LENNOX 32 STATE  
 U.S.G.S. TOPOGRAPHIC MAP: SAN SIMON SINK, NM.

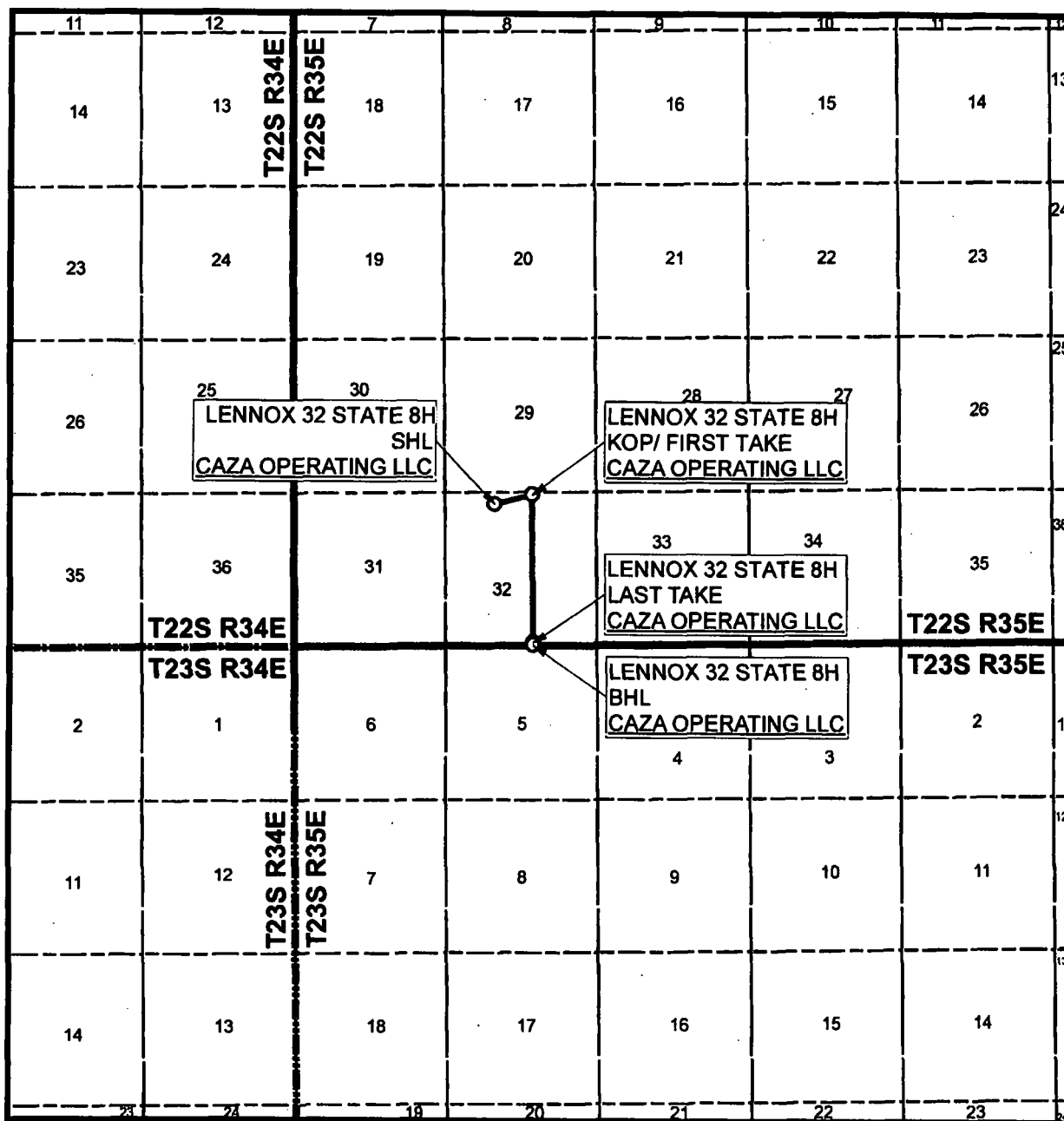
1" = 2,000'  
 CONTOUR INTERVAL = 10'



SHEET 2 OF 3

PREPARED BY:  
 R-SQUARED GLOBAL, LLC  
 1309 LOUISVILLE AVENUE, MONROE, LA 71201  
 318-323-6900 OFFICE  
 JOB No. R4017\_001\_D

# VICINITY MAP



SEC. 32 TWP. 22-S RGE. 35-E

SURVEY: N.M.P.M.

COUNTY: LEA

OPERATOR: CAZA OPERATING LLC

DESCRIPTION: 422' FNL & 1750' FWL

ELEVATION: 3534'

LEASE: LENNOX 32 STATE

U.S.G.S. TOPOGRAPHIC MAP: SAN SIMON SINK, NM.

1" = 1 MILE



SHEET 3 OF 3

PREPARED BY:  
R-SQUARED GLOBAL, LLC  
1309 LOUISVILLE AVENUE, MONROE, LA 71201  
318-323-6900 OFFICE  
JOB No. R4017\_001\_D