

UNITED STATES
DEPARTMENT OF THE INTERIOR
BUREAU OF LAND MANAGEMENTFORM APPROVED
OMB No. 1004-0137
Expires: July 31, 2010

WELL COMPLETION OR RECOMPLETION REPORT AND LOG

1a. Type of Well ☒ Oil Well ☐ Gas Well ☐ Dry ☐ Other
b. Type of Completion ☒ New Well ☐ Work Over ☐ Deepen ☐ Plug Back ☐ Resvr.
Other _____

2. Name of Operator MATADOR PRODUCTION COMPANY **Contact:** RUSTY KLEIN
Email: rusty.klein@matadorresources.com

3. Address 5400 LBJ FREEWAY SUITE 1500
DALLAS, TX 75240 **3a. Phone No. (include area code)**
Ph: 575-627-2439

4. Location of Well (Report location clearly and in accordance with Federal requirements)*
At surface NWNE 230FNL 1755FEL 32.608764 N Lat, 103.596601 W Lon
At top prod interval reported below Lot 2 204FNL 370FWL 32.608833 N Lat, 103.598283 W Lon
At total depth SWSE 91FSL 2293FEL 32.595143 N Lat, 103.598445 W Lon

5. Lease Serial No. NMLC065607

6. If Indian, Allottee or Tribe Name

7. Unit or CA Agreement Name and No.

8. Lease Name and Well No. VERA RAE FEDERAL COM 133H

9. API Well No. 30-025-44341-00-S1

10. Field and Pool, or Exploratory TEAS - BONE SPRING EAST

11. Sec., T., R., M., or Block and Survey or Area Sec 6 T20S R34E Mer NMP

12. County or Parish LEA **13. State** NM

14. Date Spudded 09/29/2018 **15. Date T.D. Reached** 10/20/2018 **16. Date Completed**
☐ D & A ☒ Ready to Prod. 01/17/2019

17. Elevations (DF, KB, RT, GL)* 3620 GL

18. Total Depth: MD 15752 TVD 10886 **19. Plug Back T.D.:** MD 15645 TVD

20. Depth Bridge Plug Set: MD TVD

21. Type Electric & Other Mechanical Logs Run (Submit copy of each) GR CCL CBL

22. Was well cored? ☒ No ☐ Yes (Submit analysis)
Was DST run? ☒ No ☐ Yes (Submit analysis)
Directional Survey? ☐ No ☒ Yes (Submit analysis)

23. Casing and Liner Record (Report all strings set in well)

Hole Size	Size/Grade	Wt. (#/ft.)	Top (MD)	Bottom (MD)	Stage Cementer Depth	No. of Sk. & Type of Cement	Slurry Vol. (BBL)	Cement Top*	Amount Pulled
26.000	24.000 H40	94.0		140		450		0	
20.000	13.375 J55	54.5		1606		2060	600	0	
12.250	9.875 J55	40.0		5395	3724	2995	835	0	
8.750	5.500 P110	20.0		15740		2306	671	860	

24. Tubing Record

Size	Depth Set (MD)	Packer Depth (MD)	Size	Depth Set (MD)	Packer Depth (MD)	Size	Depth Set (MD)	Packer Depth (MD)
2.875	10220	10225						

25. Producing Intervals

Formation	Top	Bottom	Perforated Interval	Size	No. Holes	Perf. Status
A) BONE SPRING	10705	15597	10705 TO 15597	0.000	630	OPEN
B)						
C)						
D)						

26. Perforation Record

27. Acid, Fracture, Treatment, Cement Squeeze, Etc.

Depth Interval	Amount and Type of Material
10705 TO 15597	14238 GALLONS OF 15% HCL ACID, 1,379,952 GALLONS OF 15# CROSSLINK GEL, 6,532,932 GALLONS SLICK

28. Production - Interval A

Date First Produced	Test Date	Hours Tested	Test Production	Oil BBL	Gas MCF	Water BBL	Oil Gravity Corr. API	Gas Gravity	Production Method
01/19/2019	01/25/2019	24	→	1018.0	654.0	3518.0			GAS LIFT
Choke Size	Tbg. Press. Flwg. SI	Csg. Press.	24 Hr. Rate	Oil BBL	Gas MCF	Water BBL	Gas:Oil Ratio	Well Status	
42/64	SI	734.0	→	1018	654	3518		PCV	

28a. Production - Interval B

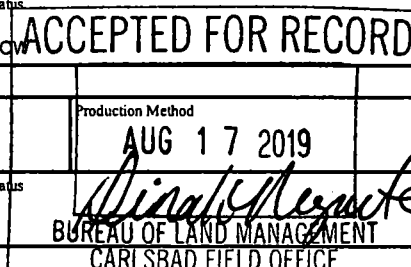
Date First Produced	Test Date	Hours Tested	Test Production	Oil BBL	Gas MCF	Water BBL	Oil Gravity Corr. API	Gas Gravity	Production Method
			→						
Choke Size	Tbg. Press. Flwg. SI	Csg. Press.	24 Hr. Rate	Oil BBL	Gas MCF	Water BBL	Gas:Oil Ratio	Well Status	
	SI		→						

(See Instructions and spaces for additional data on reverse side)

ELECTRONIC SUBMISSION #463246 VERIFIED BY THE BLM WELL INFORMATION SYSTEM

** BLM REVISED ** BLM REVISED ** BLM REVISED ** BLM REVISED ** BLM REVISED **

Reclamation Due: 7/17/2019



28b. Production - Interval C

Date First Produced	Test Date	Hours Tested	Test Production	Oil BBL	Gas MCF	Water BBL	Oil Gravity Corr. API	Gas Gravity	Production Method
			→						
Choke Size	Tbg. Press. Flwg. SI	Csg. Press.	24 Hr. Rate	Oil BBL	Gas MCF	Water BBL	Gas:Oil Ratio	Well Status	
			→						

28c. Production - Interval D

Date First Produced	Test Date	Hours Tested	Test Production	Oil BBL	Gas MCF	Water BBL	Oil Gravity Corr. API	Gas Gravity	Production Method
			→						
Choke Size	Tbg. Press. Flwg. SI	Csg. Press.	24 Hr. Rate	Oil BBL	Gas MCF	Water BBL	Gas:Oil Ratio	Well Status	
			→						

29. Disposition of Gas(Sold, used for fuel, vented, etc.)
SOLD

30. Summary of Porous Zones (Include Aquifers):

Show all important zones of porosity and contents thereof: Cored intervals and all drill-stem tests, including depth interval tested, cushion used, time tool open, flowing and shut-in pressures and recoveries.

31. Formation (Log) Markers

Formation	Top	Bottom	Descriptions, Contents, etc.	Name	Top
					Meas. Depth
DELAWARE	5497	8342		TOP OF SALT	1510
BONE SPRING 1ST	9438	9792		BASE OF SALT	3220
BONE SPRING 2ND	9968	10522		DELAWARE	5497
				BONE SPRING	8342

32. Additional remarks (include plugging procedure):

Logs will be sent via U.S. Mail
As drilled C102 and additional points required sheet attached

33. Circle enclosed attachments:

- | | | | |
|---|--------------------|---------------|-----------------------|
| 1. Electrical/Mechanical Logs (1 full set req'd.) | 2. Geologic Report | 3. DST Report | 4. Directional Survey |
| 5. Sundry Notice for plugging and cement verification | 6. Core Analysis | 7 Other: | |

34. I hereby certify that the foregoing and attached information is complete and correct as determined from all available records (see attached instructions):

Electronic Submission #463246 Verified by the BLM Well Information System.
For MATADOR PRODUCTION COMPANY, sent to the Hobbs
Committed to AFMSS for processing by DEBORAH HAM on 07/23/2019 (19DMH0159SE)

Name (please print) RUSTY KLEINTitle REGULATORY ANALYST

Signature _____ (Electronic Submission)

Date 04/26/2019

Title 18 U.S.C. Section 1001 and Title 43 U.S.C. Section 1212, make it a crime for any person knowingly and willfully to make to any department or agency of the United States any false, fictitious or fraudulent statements or representations as to any matter within its jurisdiction.

**** REVISED ** REVISED ** REVISED ** REVISED ** REVISED ** REVISED ** REVISED ** REVISED ****

District I
1625 N. French Dr., Hobbs, NM 88240
Phone: (575) 393-6161 Fax: (575) 393-0720
District II
811 S. First St., Artesia, NM 88210
Phone: (575) 748-1283 Fax: (575) 748-9720
District III
1000 Rio Brazos Road, Aztec, NM 87410
Phone: (505) 334-6178 Fax: (505) 334-6170
District IV
1220 S. St. Francis Dr., Santa Fe, NM 87505
Phone: (505) 476-3460 Fax: (505) 476-3462

State of New Mexico
Energy, Minerals & Natural Resources
Department
OIL CONSERVATION DIVISION
1220 South St. Francis Dr.
Santa Fe, NM 87505

FORM C-102
Revised August 1, 2011
Submit one copy to appropriate
District Office

☒ AMENDED REPORT

WELL LOCATION AND ACREAGE DEDICATION PLAT

As Drilled

¹ API Number 30-005-44341	² Pool Code 96637	³ Pool Name Jas; Bone Spring, East
⁴ Property Code 320548	⁵ Property Name VERNA RAE FED COM	⁶ Well Number 133H
⁷ OCRID No. 228937	⁸ Operator Name MATADOR PRODUCTION COMPANY	⁹ Elevation 3620'

¹⁰ Surface Location									
UL or lot no.	Section	Township	Range	Lot Idn	Feet from the	North/South line	Feet from the	East/West line	County
2	6	20-S	34-E	-	230'	NORTH	1755'	EAST	LEA

¹¹ Bottom Hole Location If Different From Surface									
UL or lot no.	Section	Township	Range	Lot Idn	Feet from the	North/South line	Feet from the	East/West line	County
0	6	20-S	34-E	-	91'	SOUTH	2293'	EAST	LEA

¹² Dedicated Acres 160	¹³ Joint or Infill	¹⁴ Consolidation Code	¹⁵ Order No.
--------------------------------------	-------------------------------	----------------------------------	-------------------------

No allowable will be assigned to this completion until all interests have been consolidated or a non-standard unit has been approved by the division.

NAD 27 NAD 83
X=726127.50 X=767307.96
Y=586144.84 Y=586207.72

<p>KICK OFF POINT NEW MEXICO EAST NAD 1927 X=726484 Y=586073 LAT.: N 32.6090666 LONG.: W 103.5978338 NAD 1983 X=767664 Y=586136 LAT.: N 32.6091894 LONG.: W 103.5983268 MD=10316'</p>	<p>PENETRATION POINT/ FIRST PERFORATION POINT NEW MEXICO EAST NAD 1927 X=726498 Y=585944 LAT.: N 32.6087101 LONG.: W 103.5977904 NAD 1983 X=767678 Y=586007 LAT.: N 32.6088330 LONG.: W 103.5982834 MD=10705'</p>	<p>BOTTOM HOLE LOCATION NEW MEXICO EAST NAD 1927 X=726482 Y=580963 LAT.: N 32.5950208 LONG.: W 103.5979527 NAD 1983 X=767663 Y=581026 LAT.: N 32.5951437 LONG.: W 103.5984452 MD=15752'</p>	<p>SURFACE LOCATION NEW MEXICO EAST NAD 1927 X=727016 Y=585922 LAT.: N 32.6086412 LONG.: W 103.5961089 NAD 1983 X=768196 Y=585985 LAT.: N 32.6087641 LONG.: W 103.5966018 ELEV=3620'</p>	<p>LAST PERFORATION POINT NEW MEXICO EAST NAD 1927 X=726485 Y=581117 LAT.: N 32.5954435 LONG.: W 103.5979414 NAD 1983 X=767665 Y=581180 LAT.: N 32.5955664 LONG.: W 103.5984339 MD=15597'</p>
--	--	--	---	--

¹⁷OPERATOR CERTIFICATION

I hereby certify that the information contained herein is true and complete to the best of my knowledge and belief, and that this organization either owns a working interest or unleased mineral interest in the land including the proposed bottom hole location or has a right to drill this well at this location pursuant to a contract with an owner of such a mineral or working interest, or to a voluntary pooling agreement or a compulsory pooling order heretofore entered by the division.

Rusty Klein 4/26-19
Signature Date

Rusty Klein
Printed Name

Rusty.Klein@matadorresources.com
E-mail Address

¹⁸SURVEYOR CERTIFICATION

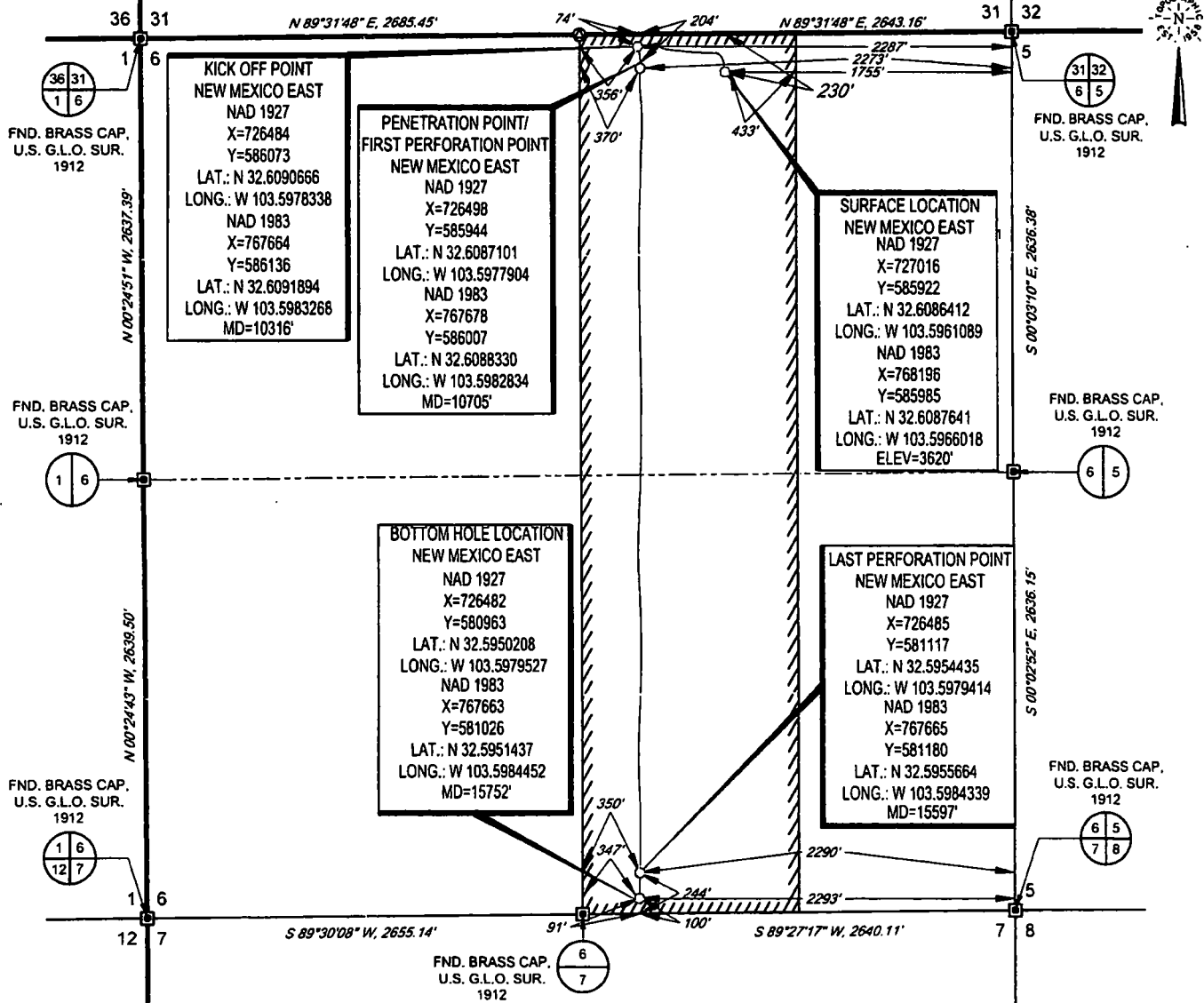
I hereby certify that the well location shown on this plat was plotted from field notes of actual surveys made by me or under my supervision, and that the same is true to the best of my belief.

09/20/2018
Date of Survey
Signature and Seal of Surveyor
ANGEL MEXICO
PROFESSIONAL SURVEYOR
25118

Certificate Number

SCALE: 1" = 1000'
0' 500' 1000'

SECTION 6, TOWNSHIP 20-S, RANGE 34-E, N.M.P.M.
LEA COUNTY, NEW MEXICO



LEASE NAME & WELL NO.: VERNA RAE FED COM 133H
SECTION 6 TWP 20-S RGE 34-E SURVEY N.M.P.M.
COUNTY LEA STATE NM ELEVATION 3620'
DESCRIPTION 230' FNL & 1755' FEL



TOPOGRAPHIC
LOYALTY INNOVATION LEGACY

1400 EVERMAN PARKWAY, Ste. 146 • FT. WORTH, TEXAS 76140
TELEPHONE: (817) 744-7512 • FAX (817) 744-7554
2903 NORTH BIG SPRING • MIDLAND, TEXAS 79705
TELEPHONE: (432) 682-1653 OR (800) 767-1653 • FAX (432) 682-1743
WWW.TOPOGRAPHIC.COM



Angel M. Baeza, P.S. No. 25116
APRIL 24, 2019

VERNA RAE FED COM 133H AS-DRILLED	REVISION:		NOTES:
	INT	DATE	
DATE: 04/23/2019			<p>1. ORIGINAL DOCUMENT SIZE: 8.5" X 11"</p> <p>2. ALL BEARINGS, DISTANCES, AND COORDINATE VALUES CONTAINED HEREIN ARE GRID BASED UPON THE NEW MEXICO COORDINATE SYSTEM OF 1983, EAST ZONE, U.S. SURVEY FEET.</p> <p>3. THIS WELL LOCATION SHOWN HEREON HAS BEEN SURVEYED ON THE GROUND UNDER MY SUPERVISION AND PREPARED ACCORDING TO THE EVIDENCE FOUND AT THE TIME OF SURVEY, AND DATA PROVIDED BY MATADOR PRODUCTION COMPANY. THIS CERTIFICATION IS MADE AND LIMITED TO THOSE PERSONS OR ENTITIES SHOWN ON THE FACE OF THIS PLAT AND IS NON-TRANSFERABLE. THIS SURVEY IS CERTIFIED FOR THIS TRANSACTION ONLY.</p>
FILE:AD_VERNA_RAE_FED_COM_133H			
DRAWN BY: TRG			
SHEET: 1 OF 1			