

UNITED STATES
DEPARTMENT OF THE INTERIOR
BUREAU OF LAND MANAGEMENTFORM APPROVED
OMB NO. 1004-0137
Expires: January 31, 2018**SUNDRY NOTICES AND REPORTS ON WELLS**
Do not use this form for proposals to drill or to re-enter an abandoned well. Use form 3160-3 (APD) for such proposals.Lease Serial No.
NMNM128929

6. If Indian, Allottee or Tribe Name

7. If Unit or CA/Agreement, Name and/or No.

8. Well Name and No.
PADUCA 7 6 A2GB FEDERAL 1H9. API Well No.
30-025-42321-00-X110. Field and Pool or Exploratory Area
JENNINGS11. County or Parish, State
LEA COUNTY, NM

SUBMIT IN TRIPLICATE - Other instructions on

1. Type of Well
☒ Oil Well ☐ Gas Well ☐ Other2. Name of Operator
MEWBOURNE OIL COMPANYContact: JACKIE LATHAN
E-Mail: jlathan@mewbourne.com3a. Address
P O BOX 5270
HOBBS, NM 882413b. Phone No. (include area code)
Ph: 575-393-5905

4. Location of Well (Footage, Sec., T., R., M., or Survey Description)

Sec 7 T26S R32E SWNE 2455FNL 1650FEL
32.032930 N Lat, 103.424012 W Lon

12. CHECK THE APPROPRIATE BOX(ES) TO INDICATE NATURE OF NOTICE, REPORT, OR OTHER DATA

TYPE OF SUBMISSION	TYPE OF ACTION			
<input type="checkbox"/> Notice of Intent	<input type="checkbox"/> Acidize	<input type="checkbox"/> Deepen	<input type="checkbox"/> Production (Start/Resume)	<input type="checkbox"/> Water Shut-Off
<input checked="" type="checkbox"/> Subsequent Report	<input type="checkbox"/> Alter Casing	<input type="checkbox"/> Hydraulic Fracturing	<input type="checkbox"/> Reclamation	<input type="checkbox"/> Well Integrity
<input type="checkbox"/> Final Abandonment Notice	<input type="checkbox"/> Casing Repair	<input type="checkbox"/> New Construction	<input type="checkbox"/> Recomplete	<input checked="" type="checkbox"/> Other
	<input type="checkbox"/> Change Plans	<input type="checkbox"/> Plug and Abandon	<input type="checkbox"/> Temporarily Abandon	Well Spud
	<input type="checkbox"/> Convert to Injection	<input type="checkbox"/> Plug Back	<input type="checkbox"/> Water Disposal	

13. Describe Proposed or Completed Operation: Clearly state all pertinent details, including estimated starting date of any proposed work and approximate duration thereof. If the proposal is to deepen directionally or recompleate horizontally, give subsurface locations and measured and true vertical depths of all pertinent markers and zones. Attach the Bond under which the work will be performed or provide the Bond No. on file with BLM/BIA. Required subsequent reports must be filed within 30 days following completion of the involved operations. If the operation results in a multiple completion or recompletion in a new interval, a Form 3160-4 must be filed once testing has been completed. Final Abandonment Notices must be filed only after all requirements, including reclamation, have been completed and the operator has determined that the site is ready for final inspection.

7/24/19

Spud 17 1/2" hole @ 1215'. Ran 1200' of 13 3/8" 54.5# J55 ST&C Csg. Cemented with 900 sks Class C w/additives. Mixed @ 13.5#/g w/1.76 yd. Tail w/200 sks Class C w/additives. Mixed @ 14.8#/g w/1.33 yd. Displaced w/173 bbls FW. Plug down @ 12:15 AM 07/26/19. Circ 349 sks of cmt to the pit. Test BOPE to 10000# & Annular to 5000#. At 9:30 A.M. 07/27/19, tested csg to 1500# for 30 mins, held OK. Drilled out with 12 1/4" bit.

Charts & schematic attached.

Bond on file: NM1693 nationwide & NMB000919

14. I hereby certify that the foregoing is true and correct.	
Electronic Submission #477170 verified by the BLM Well Information System For MEWBOURNE OIL COMPANY, sent to the Hobbs Committed to AFMSS for processing by PRISCILLA PEREZ on 08/08/2019 (19PP2797SE)	
Name (Printed/Typed) RUBY CABALLERO	Title CLERK
Signature (Electronic Submission)	Date 08/08/2019

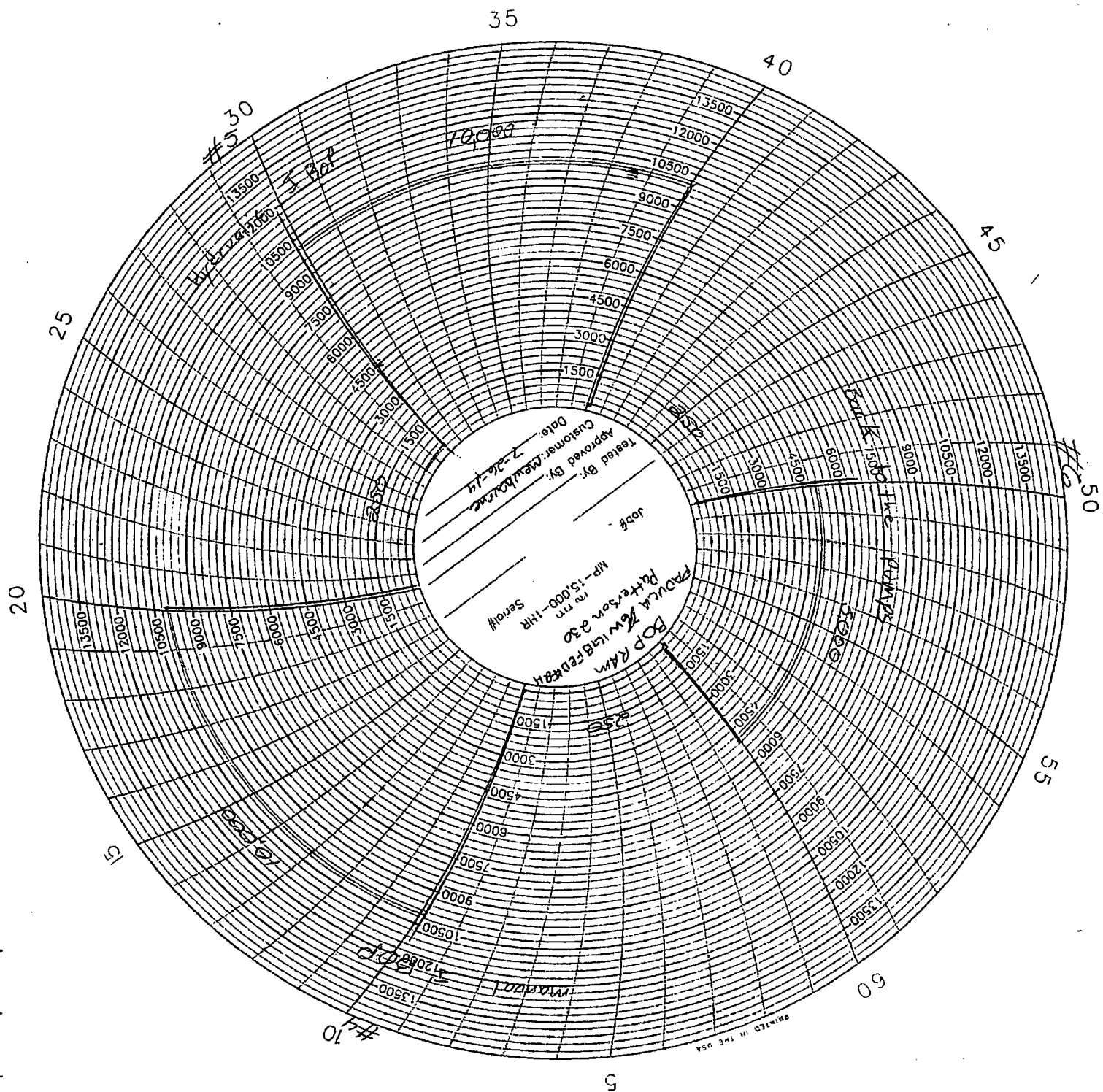
THIS SPACE FOR FEDERAL OR STATE OFFICE USE

Approved By _____	Title Accepted for Record	Date AUG 15 2019
Conditions of approval, if any, are attached. Approval of this notice does not warrant or certify that the applicant holds legal or equitable title to those rights in the subject lease which would entitle the applicant to conduct operations thereon.	Jonathon Shepard Carlsbad Field Office	
Office		

Title 18 U.S.C. Section 1001 and Title 43 U.S.C. Section 1212, make it a crime for any person knowingly and willfully to make to any department or agency of the United States any false, fictitious or fraudulent statements or representations as to any matter within its jurisdiction.

(Instructions on page 2)

** BLM REVISED ** BLM REVISED ** BLM REVISED ** BLM REVISED ** BLM REVISED **



20

25

#8 30

35

40

45

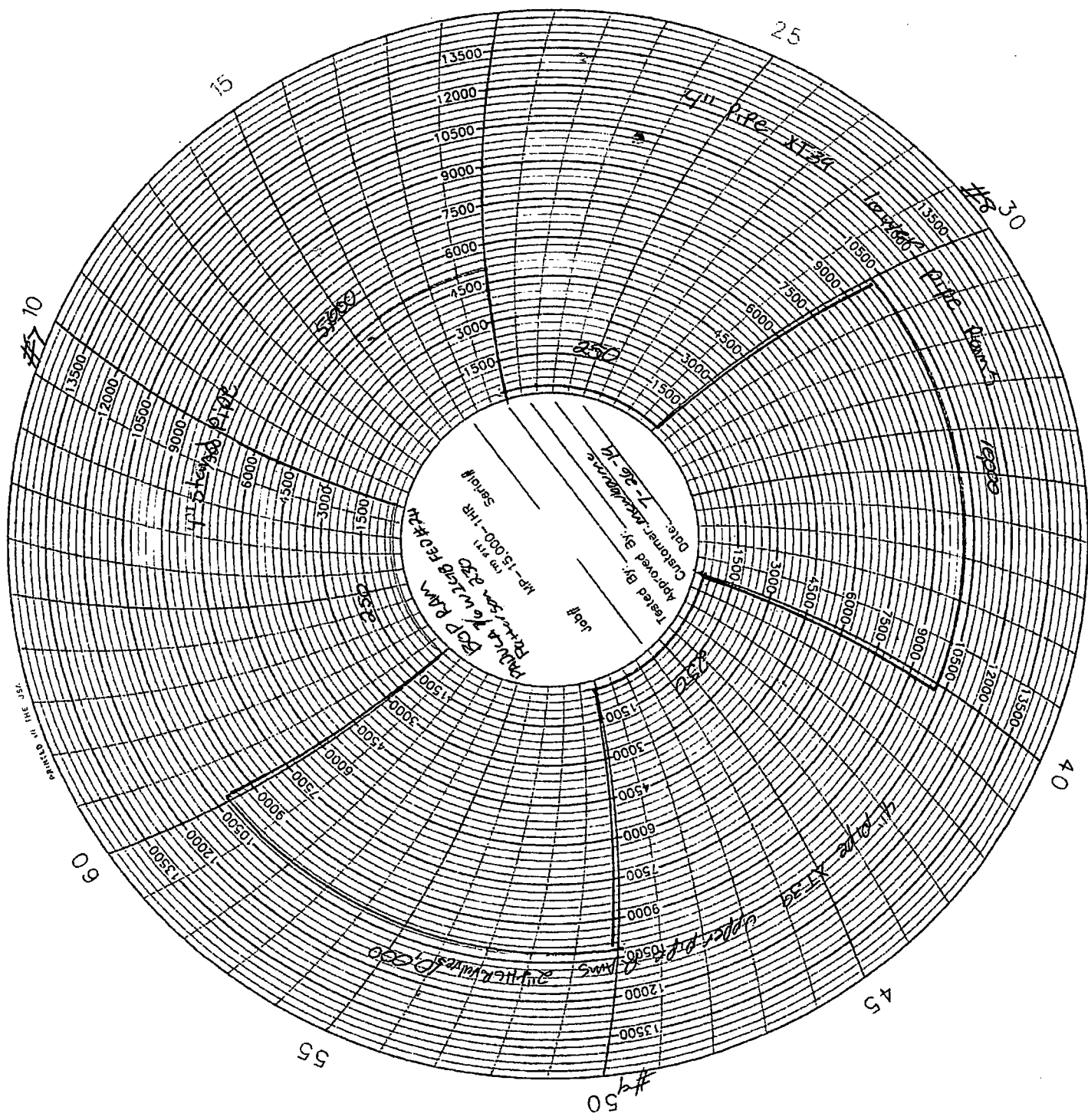
#9 50

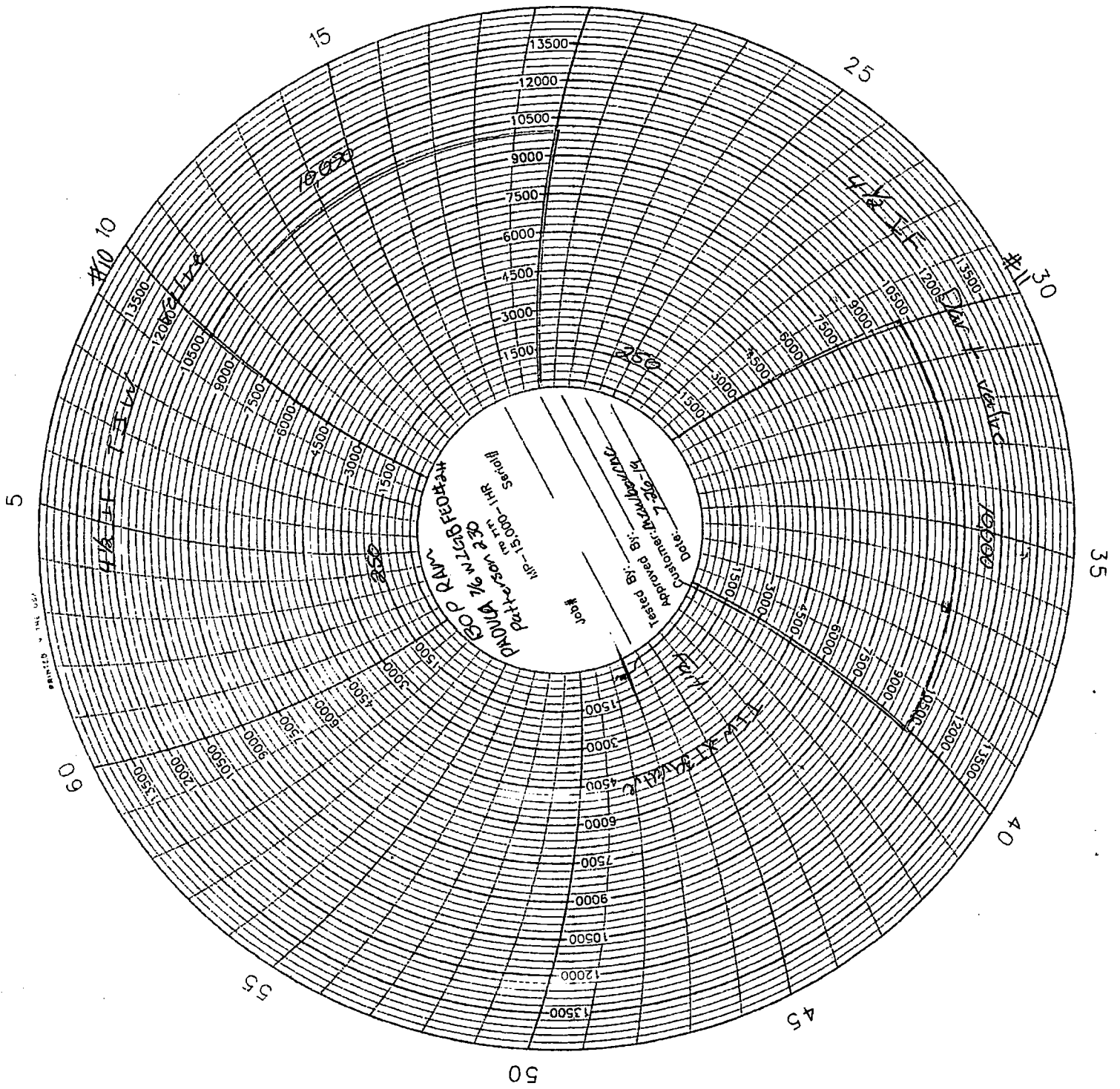
55

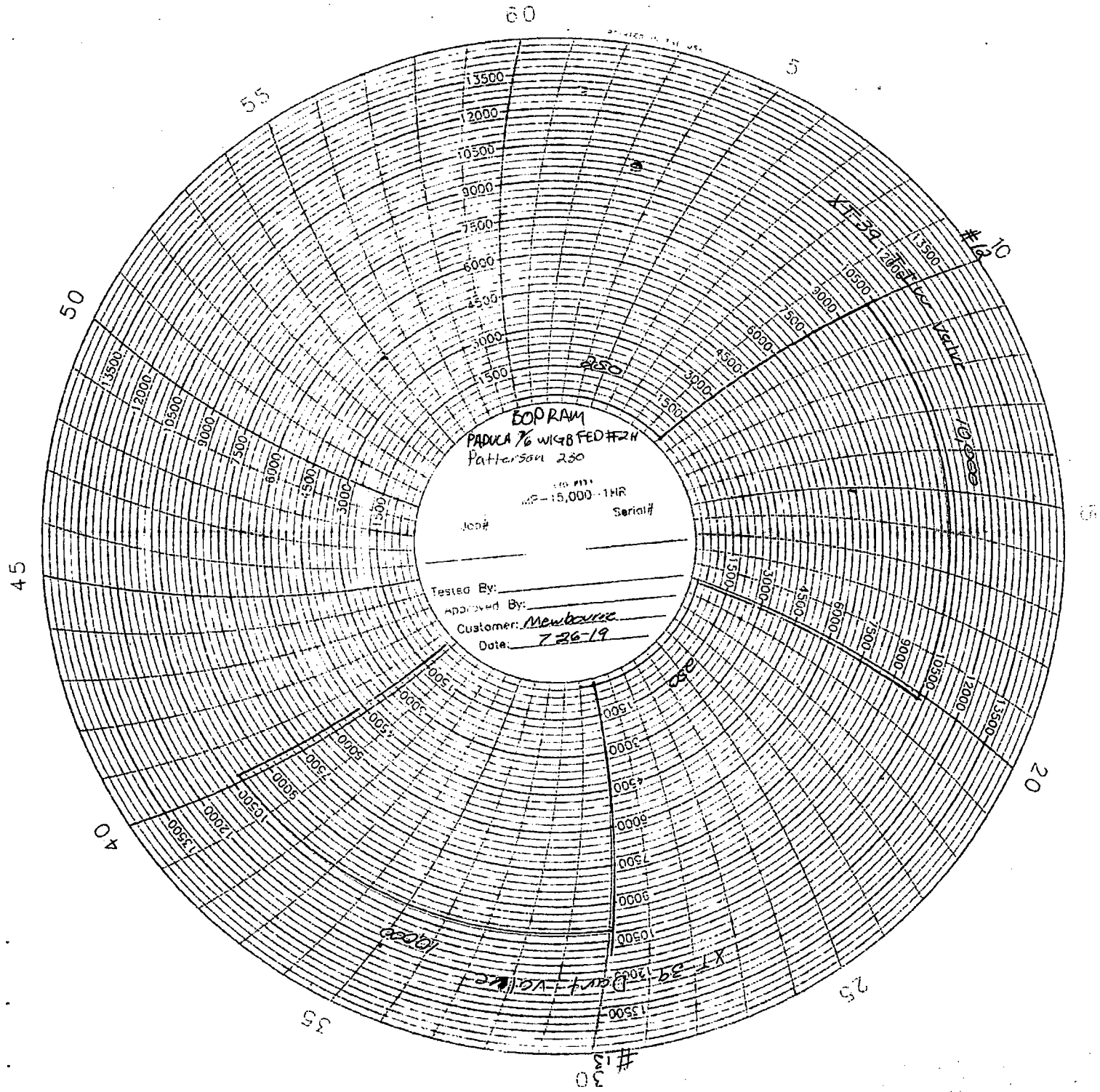
60

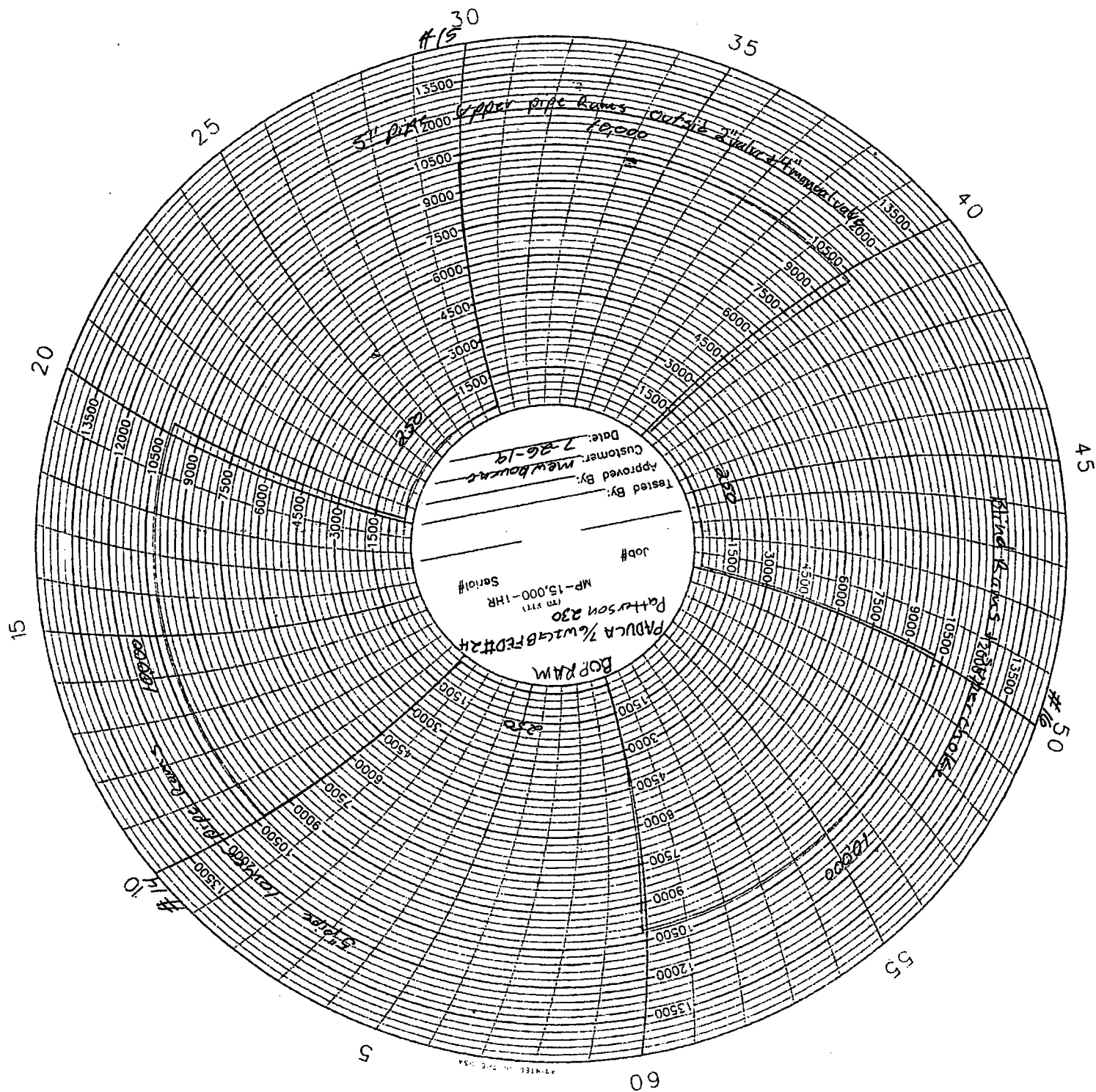
5

#7 10









55

60

PRINTED IN THE USA

5

#17 10

15

20

25

#18 30

35

40

45

50

BOB RAN
PADUCA 76 WJGB FAD FAH
Patterson 230
Job# MP-15,000-1HR
Serial#
Tested By:
Approved By:
Customer: Mr. Lawrence
Date: 7-26-19

5/10/15-1500
Amulet

3/26/19

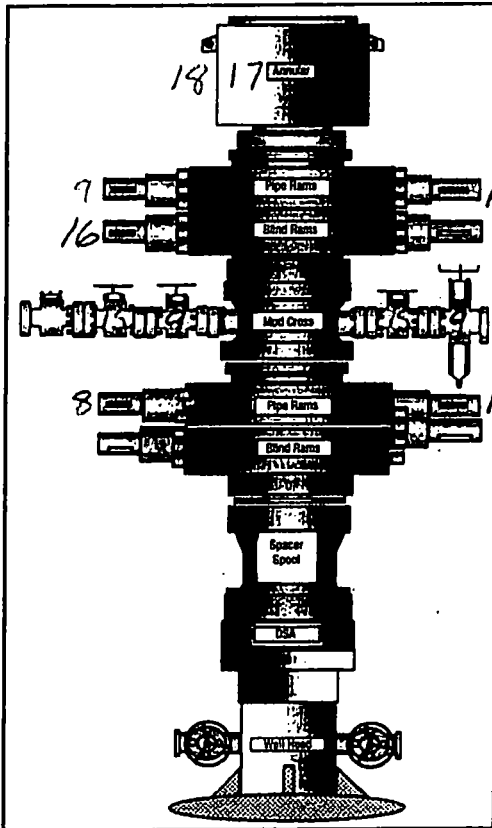
OSP

4/17/19
5/17/19
6/17/19
7/17/19
8/17/19
9/17/19
10/17/19
11/17/19
12/17/19
1/17/20
2/17/20
3/17/20
4/17/20
5/17/20
6/17/20
7/17/20
8/17/20
9/17/20
10/17/20
11/17/20
12/17/20
1/17/21
2/17/21
3/17/21
4/17/21
5/17/21
6/17/21
7/17/21
8/17/21
9/17/21
10/17/21
11/17/21
12/17/21
1/17/22
2/17/22
3/17/22
4/17/22
5/17/22
6/17/22
7/17/22
8/17/22
9/17/22
10/17/22
11/17/22
12/17/22
1/17/23
2/17/23
3/17/23
4/17/23
5/17/23
6/17/23
7/17/23
8/17/23
9/17/23
10/17/23
11/17/23
12/17/23
1/17/24
2/17/24
3/17/24
4/17/24
5/17/24
6/17/24
7/17/24
8/17/24
9/17/24
10/17/24
11/17/24
12/17/24
1/17/25
2/17/25
3/17/25
4/17/25
5/17/25
6/17/25
7/17/25
8/17/25
9/17/25
10/17/25
11/17/25
12/17/25
1/17/26
2/17/26
3/17/26
4/17/26
5/17/26
6/17/26
7/17/26
8/17/26
9/17/26
10/17/26
11/17/26
12/17/26
1/17/27
2/17/27
3/17/27
4/17/27
5/17/27
6/17/27
7/17/27
8/17/27
9/17/27
10/17/27
11/17/27
12/17/27
1/17/28
2/17/28
3/17/28
4/17/28
5/17/28
6/17/28
7/17/28
8/17/28
9/17/28
10/17/28
11/17/28
12/17/28
1/17/29
2/17/29
3/17/29
4/17/29
5/17/29
6/17/29
7/17/29
8/17/29
9/17/29
10/17/29
11/17/29
12/17/29
1/17/30
2/17/30
3/17/30
4/17/30
5/17/30
6/17/30
7/17/30
8/17/30
9/17/30
10/17/30
11/17/30
12/17/30
1/17/31
2/17/31
3/17/31
4/17/31
5/17/31
6/17/31
7/17/31
8/17/31
9/17/31
10/17/31
11/17/31
12/17/31
1/17/32
2/17/32
3/17/32
4/17/32
5/17/32
6/17/32
7/17/32
8/17/32
9/17/32
10/17/32
11/17/32
12/17/32
1/17/33
2/17/33
3/17/33
4/17/33
5/17/33
6/17/33
7/17/33
8/17/33
9/17/33
10/17/33
11/17/33
12/17/33
1/17/34
2/17/34
3/17/34
4/17/34
5/17/34
6/17/34
7/17/34
8/17/34
9/17/34
10/17/34
11/17/34
12/17/34
1/17/35
2/17/35
3/17/35
4/17/35
5/17/35
6/17/35
7/17/35
8/17/35
9/17/35
10/17/35
11/17/35
12/17/35
1/17/36
2/17/36
3/17/36
4/17/36
5/17/36
6/17/36
7/17/36
8/17/36
9/17/36
10/17/36
11/17/36
12/17/36
1/17/37
2/17/37
3/17/37
4/17/37
5/17/37
6/17/37
7/17/37
8/17/37
9/17/37
10/17/37
11/17/37
12/17/37
1/17/38
2/17/38
3/17/38
4/17/38
5/17/38
6/17/38
7/17/38
8/17/38
9/17/38
10/17/38
11/17/38
12/17/38
1/17/39
2/17/39
3/17/39
4/17/39
5/17/39
6/17/39
7/17/39
8/17/39
9/17/39
10/17/39
11/17/39
12/17/39
1/17/40
2/17/40
3/17/40
4/17/40
5/17/40
6/17/40
7/17/40
8/17/40
9/17/40
10/17/40
11/17/40
12/17/40
1/17/41
2/17/41
3/17/41
4/17/41
5/17/41
6/17/41
7/17/41
8/17/41
9/17/41
10/17/41
11/17/41
12/17/41
1/17/42
2/17/42
3/17/42
4/17/42
5/17/42
6/17/42
7/17/42
8/17/42
9/17/42
10/17/42
11/17/42
12/17/42
1/17/43
2/17/43
3/17/43
4/17/43
5/17/43
6/17/43
7/17/43
8/17/43
9/17/43
10/17/43
11/17/43
12/17/43
1/17/44
2/17/44
3/17/44
4/17/44
5/17/44
6/17/44
7/17/44
8/17/44
9/17/44
10/17/44
11/17/44
12/17/44
1/17/45
2/17/45
3/17/45
4/17/45
5/17/45
6/17/45
7/17/45
8/17/45
9/17/45
10/17/45
11/17/45
12/17/45
1/17/46
2/17/46
3/17/46
4/17/46
5/17/46
6/17/46
7/17/46
8/17/46
9/17/46
10/17/46
11/17/46
12/17/46
1/17/47
2/17/47
3/17/47
4/17/47
5/17/47
6/17/47
7/17/47
8/17/47
9/17/47
10/17/47
11/17/47
12/17/47
1/17/48
2/17/48
3/17/48
4/17/48
5/17/48
6/17/48
7/17/48
8/17/48
9/17/48
10/17/48
11/17/48
12/17/48
1/17/49
2/17/49
3/17/49
4/17/49
5/17/49
6/17/49
7/17/49
8/17/49
9/17/49
10/17/49
11/17/49
12/17/49
1/17/50
2/17/50
3/17/50
4/17/50
5/17/50
6/17/50
7/17/50
8/17/50
9/17/50
10/17/50
11/17/50
12/17/50
1/17/51
2/17/51
3/17/51
4/17/51
5/17/51
6/17/51
7/17/51
8/17/51
9/17/51
10/17/51
11/17/51
12/17/51
1/17/52
2/17/52
3/17/52
4/17/52
5/17/52
6/17/52
7/17/52
8/17/52
9/17/52
10/17/52
11/17/52
12/17/52
1/17/53
2/17/53
3/17/53
4/17/53
5/17/53
6/17/53
7/17/53
8/17/53
9/17/53
10/17/53
11/17/53
12/17/53
1/17/54
2/17/54
3/17/54
4/17/54
5/17/54
6/17/54
7/17/54
8/17/54
9/17/54
10/17/54
11/17/54
12/17/54
1/17/55
2/17/55
3/17/55
4/17/55
5/17/55
6/17/55
7/17/55
8/17/55
9/17/55
10/17/55
11/17/55
12/17/55
1/17/56
2/17/56
3/17/56
4/17/56
5/17/56
6/17/56
7/17/56
8/17/56
9/17/56
10/17/56
11/17/56
12/17/56
1/17/57
2/17/57
3/17/57
4/17/57
5/17/57
6/17/57
7/17/57
8/17/57
9/17/57
10/17/57
11/17/57
12/17/57
1/17/58
2/17/58
3/17/58
4/17/58
5/17/58
6/17/58
7/17/58
8/17/58
9/17/58
10/17/58
11/17/58
12/17/58
1/17/59
2/17/59
3/17/59
4/17/59
5/17/59
6/17/59
7/17/59
8/17/59
9/17/59
10/17/59
11/17/59
12/17/59
1/17/60
2/17/60
3/17/60
4/17/60
5/17/60
6/17/60
7/17/60
8/17/60
9/17/60
10/17/60
11/17/60
12/17/60
1/17/61
2/17/61
3/17/61
4/17/61
5/17/61
6/17/61
7/17/61
8/17/61
9/17/61
10/17/61
11/17/61
12/17/61
1/17/62
2/17/62
3/17/62
4/17/62
5/17/62
6/17/62
7/17/62
8/17/62
9/17/62
10/17/62
11/17/62
12/17/62
1/17/63
2/17/63
3/17/63
4/17/63
5/17/63
6/17/63
7/17/63
8/17/63
9/17/63
10/17/63
11/17/63
12/17/63
1/17/64
2/17/64
3/17/64
4/17/64
5/17/64
6/17/64
7/17/64
8/17/64
9/17/64
10/17/64
11/17/64
12/17/64
1/17/65
2/17/65
3/17/65
4/17/65
5/17/65
6/17/65
7/17/65
8/17/65
9/17/65
10/17/65
11/17/65
12/17/65
1/17/66
2/17/66
3/17/66
4/17/66
5/17/66
6/17/66
7/17/66
8/17/66
9/17/66
10/17/66
11/17/66
12/17/66
1/17/67
2/17/67
3/17/67
4/17/67
5/17/67
6/17/67
7/17/67
8/17/67
9/17/67
10/17/67
11/17/67
12/17/67
1/17/68
2/17/68
3/17/68
4/17/68
5/17/68
6/17/68
7/17/68
8/17/68
9/17/68
10/17/68
11/17/68
12/17/68
1/17/69
2/17/69
3/17/69
4/17/69
5/17/69
6/17/69
7/17/69
8/17/69
9/17/69
10/17/69
11/17/69
12/17/69
1/17/70
2/17/70
3/17/70
4/17/70
5/17/70
6/17/70
7/17/70
8/17/70
9/17/70
10/17/70
11/17/70
12/17/70
1/17/71
2/17/71
3/17/71
4/17/71
5/17/71
6/17/71
7/17/71
8/17/71
9/17/71
10/17/71
11/17/71
12/17/71
1/17/72
2/17/72
3/17/72
4/17/72
5/17/72
6/17/72
7/17/72
8/17/72
9/17/72
10/17/72
11/17/72
12/17/72
1/17/73
2/17/73
3/17/73
4/17/73
5/17/73
6/17/73
7/17/73
8/17/73
9/17/73
10/17/73
11/17/73
12/17/73
1/17/74
2/17/74
3/17/74
4/17/74
5/17/74
6/17/74
7/17/74
8/17/74
9/17/74
10/17/74
11/17/74
12/17/74
1/17/75
2/17/75
3/17/75
4/17/75
5/17/75
6/17/75
7/17/75
8/17/75
9/17/75
10/17/75
11/17/75
12/17/75
1/17/76
2/17/76
3/17/76
4/17/76
5/17/76
6/17/76
7/17/76
8/17/76
9/17/76
10/17/76
11/17/76
12/17/76
1/17/77
2/17/77
3/17/77
4/17/77
5/17/77
6/17/77
7/17/77
8/17/77
9/17/77
10/17/77
11/17/77
12/17/77
1/17/78
2/17/78
3/17/78
4/17/78
5/17/78
6/17/78
7/17/78
8/17/78
9/17/78
10/17/78
11/17/78
12/17/78
1/17/79
2/17/79
3/17/79
4/17/79
5/17/79
6/17/79
7/17/79
8/17/79
9/17/79
10/17/79
11/17/79
12/17/79
1/17/80
2/17/80
3/17/80
4/17/80
5/17/80
6/17/80
7/17/80
8/17/80
9/17/80
10/17/80
11/17/80
12/17/80
1/17/81
2/17/81
3/17/81
4/17/81
5/17/81
6/17/81
7/17/81
8/17/81
9/17/81
10/17/81
11/17/81
12/17/81
1/17/82
2/17/82
3/17/82
4/17/82
5/17/82
6/17/82
7/17/82
8/17/82
9/17/82
10/17/82
11/17/82
12/17/82
1/17/83
2/17/83
3/17/83
4/17/83
5/17/83
6/17/83
7/17/83
8/17/83
9/17/83
10/17/83
11/17/83
12/17/83
1/17/84
2/17/84
3/17/84
4/17/84
5/17/84
6/17/84
7/17/84
8/17/84
9/17/84
10/17/84
11/17/84
12/17/84
1/17/85
2/17/85
3/17/85
4/17/85
5/17/85
6/17/85
7/17/85
8/17/85
9/17/85
10/17/85
11/17/85
12/17/85
1/17/86
2/17/86
3/17/86
4/17/86
5/17/86
6/17/86
7/17/86
8/17/86
9/17/86
10/17/86
11/17/86
12/17/86
1/17/87
2/17/87
3/17/87
4/17/87
5/17/87
6/17/87
7/17/87
8/17/87
9/17/87
10/17/87
11/17/87
12/17/87
1/17/88
2/17/88
3/17/88
4/17/88
5/17/88
6/17/88
7/17/88
8/17/88
9/17/88
10/17/88
11/17/88
12/17/88
1/17/89
2/17/89
3/17/89
4/17/89
5/17/89
6/17/89
7/17/89
8/17/89
9/17/89
10/17/89
11/17/89
12/17/89
1/17/90
2/17/90
3/17/90
4/17/90
5/17/90
6/17/90
7/17/90
8/17/90
9/17/90
10/17/90
11/17/90
12/17/90
1/17/91
2/17/91
3/17/91
4/17/91
5/17/91
6/17/91
7/17/91
8/17/91
9/17/91
10/17/91
11/17/91
12/17/91
1/17/92
2/17/92
3/17/92
4/17/92
5/17/92
6/17/92
7/17/92
8/17/92
9/17/92
10/17/92
11/17/92
12/17/92
1/17/93
2/17/93
3/17/93
4/17/93
5/17/93
6/17/93
7/17/93
8/17/93
9/17/93
10/17/93
11/17/93
12/17/93
1/17/94
2/17/94
3/17/94
4/17/94
5/17/94
6/17/94
7/17/94
8/17/94
9/17/94
10/17/94
11/17/94
12/17/94
1/17/95
2/17/95
3/17/95
4/17/95
5/17/95
6/17/95
7/17/95
8/17/95
9/17/95
10/17/95
11/17/95
12/17/95
1/17/96
2/17/96
3/17/96
4/17/96
5/17/96
6/17/96
7/17/96
8/17/96
9/17/96
10/17/96
11/17/96
12/17/96
1/17/97
2/17/97
3/17/97
4/17/97
5/17/97
6/17/97
7/17/97
8/17/97
9/17/97
10/17/97
11/17/97
12/17/97
1/17/98
2/17/98
3/17/98
4/17/98
5/17/98
6/17/98
7/17/98
8/17/98
9/17/98
10/17/98
11/17/98
12/17/98
1/17/99
2/17/99
3/17/99
4/17/99
5/17/99
6/17/99
7/17/99
8/17/99
9/17/99
10/17/99
11/17/99
12/17/99
1/17/100
2/17/100
3/17/100
4/17/100
5/17/100
6/17/100
7/17/100
8/17/100
9/17/100
10/17/100
11/17/100
12/17/100

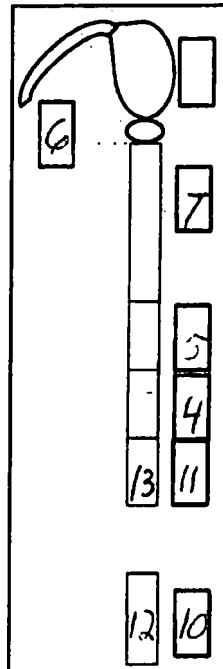
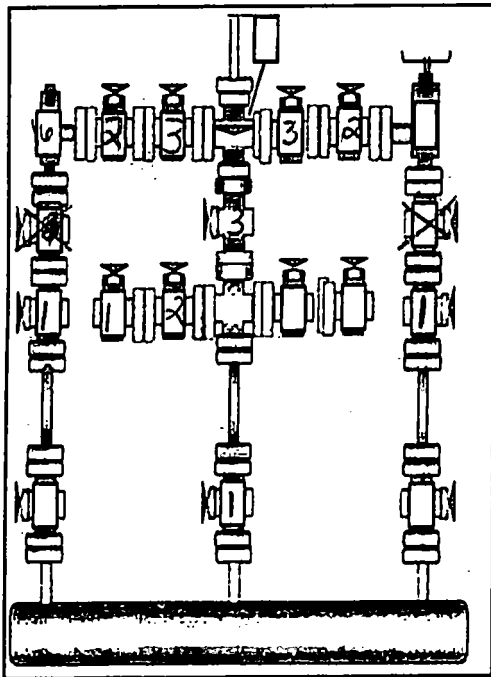


B.O.P. Ram-Block & Iron Rentals, Inc.

Company mewbourne Lease PADUCA 7/6 WIGB FED #2H
 Rig No. Dutton 230 Country/Parish Lee
 Test Date 7-26-19 Company Phone # _____



Test Sequence	Low Test		High Test		Remarks
	PSI	Duration	PSI	Duration	
#1	250	10 min	10,000	10 min	1st outside set on 1 in.
#2					2nd outside set on 1 in.
#3					3rd inside set on 1 in.
#4					manifold IBCW
#5			10,000		Hydraulic IBCW
#6			5,000		Pumps
#7			5,000		4" steel pipe
#8			10,000		4" steel pipe
#9					4" steel pipe
#10					4" steel pipe
#11					4" steel pipe
#12					XT39 IBCW valve
#13					XT39 IBCW valve
#14					5" pipe IBCW valve
#15					5" pipe IBCW valve
#16			10,000		Blind Ram
#17			5,000		5" pipe Annular
#18	250	10 min	5,000	10 min	4" pipe Annular
#19					
#20					
#21					



BOP Size and Working Pressure 13 5/8 in
 Manifold Size & Working Pressure 10,000
 Wellhead Size and Type 13 5/8 speed head
 Drillpipe Connection XT39
 Test Medium water
 Unit Operator cross
 Charts Received by George H. H.
 Company Representative



Invoice #: WT 6887

Field Fact Sheet

Company: Mewbourne Rig: Porter 230

Date: 7-26-14 Lease: PRIDUA 7/6 WIGB FED #24

Company Man: Mike Hill Crew Leader: OSCAR S

Job: ☒ Nipple-Up ☐ Nipple-Down ☐ B-Section ☐ Winches ☒ Test ☐ Gin Truck

Total Hours on Ticket? 31 Total Dollar Amount of Ticket? 148011.00

Time to Arrive: 12 AM Time Actual Work Began: 1:00 PM

TX Time	Description of Activities
11:50pm	Arrived on location rigging up to manifold test
12:45pm	Start testing manifold
2:30 AM	Cracking Blank off the manifold
2:40 AM	On standby, waiting for the pump + valves
6:40 AM	putting in spools in tubing in the wellhead
6:41 AM	Starting test in well head & putting bolts on top
7:00 AM	Start torqueing wellhead & spools to 200 ft. & 100 ft.
10:30 AM	On standby, waiting for the pump + valves
12:30pm	Rigging up test tools to test back to pumps & 2 sets of flow valves
1:30 PM	Start testing manual FPR (2pm) Accumulator leak
3:00 PM	continuing testing Top Drive to pumps
4:11 PM	Start testing Top Drive (6:30 PM) Accumulator hydraulic line leak
7:30 PM	Start testing RAMPS
9:45 PM	Replugging Hydraulic line in manifold - On standby
10:05 PM	Start testing Accumulator with 3" & 4" pipe

Did you encounter "wait" time? ☒ Yes ☐ No

If so, what was the reason why?

no wait time, waiting for the pump + valves to be put in the wellhead & the hydraulic line to be plugged

Any incident/accident occur during work? ☐ Yes ☒ No B.O.P. Ram Management Notified? ☐ Yes ☒ No
Company Man or Tool Pusher Notified? ☐ Yes ☒ No Medical Treatment Needed or Administered? ☐ Yes ☒ No