

District I
1625 N. French Dr., Hobbs, NM 88240
Phone: (575) 393-6161 Fax: (575) 393-0720
District II
811 S. First St., Artesia, NM 88210
Phone: (575) 748-1283 Fax: (575) 748-9720
District III
1000 Rio Brazos Road, Aztec, NM 87410
Phone: (505) 334-6178 Fax: (505) 334-6170
District IV
1220 S. St. Francis Dr., Santa Fe, NM 87505
Phone: (505) 476-3460 Fax: (505) 476-3462

State of New Mexico
Energy, Minerals & Natural Resources Department
OIL CONSERVATION DIVISION
1220 South St. Francis Dr.
Santa Fe, NM 87505

Form C-102
Revised August 1, 2011
Submit one copy to appropriate
District Office
☐ AMENDED REPORT

WELL LOCATION AND ACREAGE DEDICATION PLAT

API Number 30-025-45393		Pool Code 7320	Pool Name BRINNINSTOOL;BONE SPRING
Property Code	Property Name NORTH THISTLE 15-10 STATE COM		Well Number 2H
OGRID No. 6137	Operator Name DEVON ENERGY PRODUCTION COMPANY, L.P.		Elevation 3711.4

Surface Location

UL or lot no.	Section	Township	Range	Lot Idn	Feet from the	North/South line	Feet from the	East/West line	County
M	15	23 S	33 E		415	SOUTH	810	WEST	LEA

Bottom Hole Location If Different From Surface

UL or lot no.	Section	Township	Range	Lot Idn	Feet from the	North/South line	Feet from the	East/West line	County
D	10	23 S	33E		20	NORTH	1284	WEST	LEA

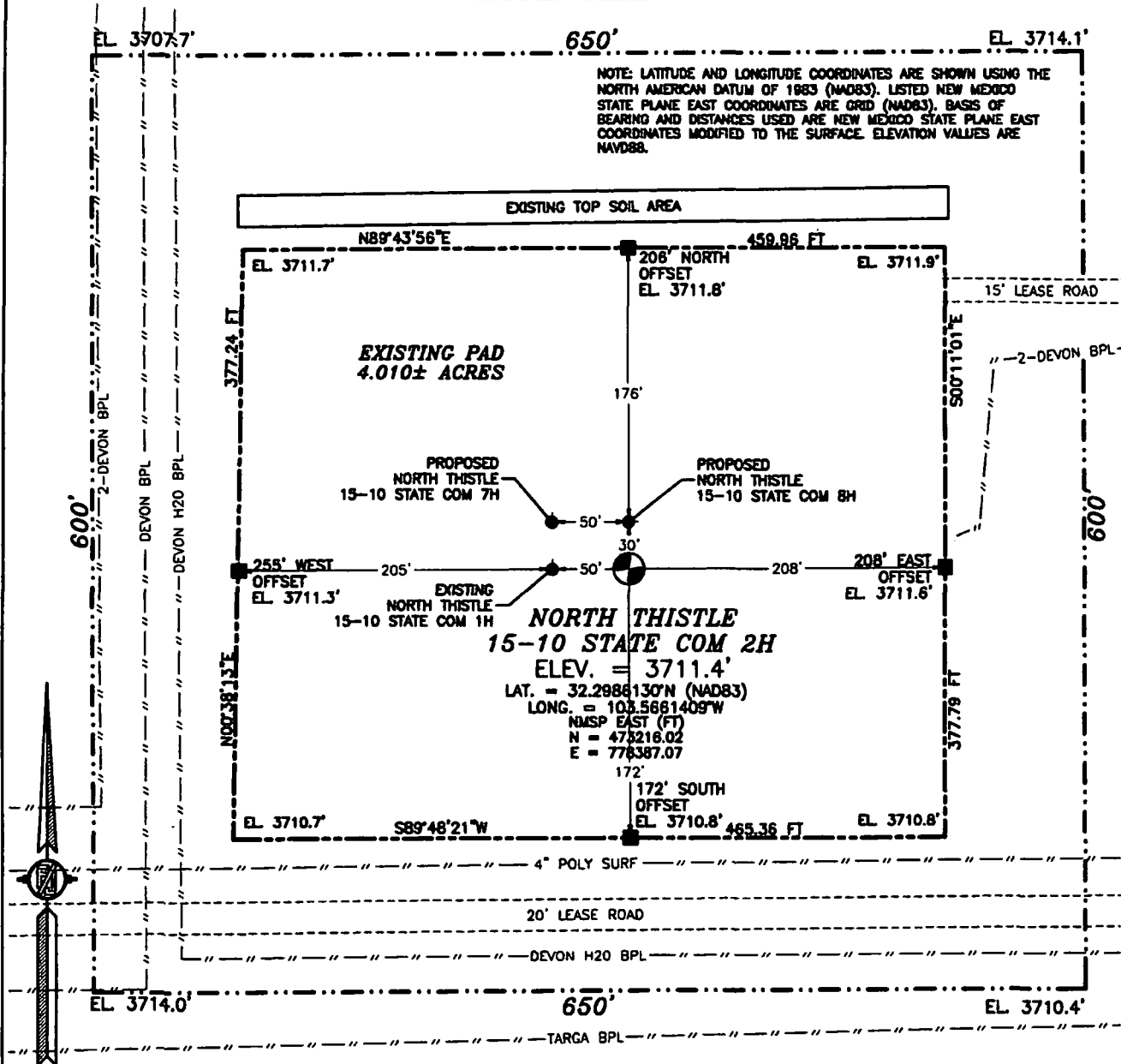
Dedicated Acres 640	Joint or Infill	Consolidation Code	Order No.
-------------------------------	-----------------	--------------------	-----------

No allowable will be assigned to this completion until all interests have been consolidated or a non-standard unit has been approved by the division.

<p>NE CORNER SEC. 10 LAT. = 32.3285058°N LONG. = 103.5687966°W NMSP EAST (FT) N = 483357.54 E = 777494.11</p> <p>W/4 CORNER SEC. 10 SCALED</p> <p>SECTION CORNER LAT. = 32.3119919°N LONG. = 103.5687767°W NMSP EAST (FT) N = 478077.43 E = 777535.58</p> <p>W/4 CORNER SEC. 15 LAT. = 32.3047319°N LONG. = 103.5687767°W NMSP EAST (FT) N = 475436.25 E = 777556.78</p> <p>SW CORNER SEC. 15 LAT. = 32.2974757°N LONG. = 103.5687592°W NMSP EAST (FT) N = 472796.48 E = 777580.98</p>		<p>NE CORNER SEC. 10 LAT. = 32.3285058°N LONG. = 103.5687966°W NMSP EAST (FT) N = 483357.54 E = 777494.11</p> <p>E/4 CORNER SEC. 10 LAT. = 32.3192397°N LONG. = 103.5516842°W NMSP EAST (FT) N = 480752.27 E = 782800.78</p> <p>SECTION CORNER LAT. = 32.3119976°N LONG. = 103.5516853°W NMSP EAST (FT) N = 478117.59 E = 782818.20</p> <p>E/4 CORNER SEC. 15 SCALED</p> <p>SE CORNER SEC. 15 LAT. = 32.2974530°N LONG. = 103.5516745°W NMSP EAST (FT) N = 472826.30 E = 782860.12</p>		<p>" OPERATOR CERTIFICATION</p> <p>I hereby certify that the information contained herein is true and complete to the best of my knowledge and belief, and that this organization either owns a working interest or unleased mineral interest in the land including the proposed bottom hole location or has a right to drill this well at this location pursuant to a contract with an owner of such a mineral or working interest, or to a voluntary pooling agreement or a compulsory pooling order heretofore entered by the division.</p> <p><i>Rebecca Deal</i> 12/18/2018 Signature Date</p> <p>Rebecca Deal, Regulatory Analyst Printed Name</p> <p>rebecca.deal@dvn.com E-mail Address</p>
<p>NOTE: LATITUDE AND LONGITUDE COORDINATES ARE SHOWN USING THE NORTH AMERICAN DATUM OF 1983 (NAD83). LISTED NEW MEXICO STATE PLANE EAST COORDINATES ARE GRID (NAD83). BASIS OF BEARING AND DISTANCES USED ARE NEW MEXICO STATE PLANE EAST COORDINATES MODIFIED TO THE SURFACE. ELEVATION VALUES ARE NAVD83.</p> <p>W/4 CORNER SEC. 10 SCALED</p> <p>SECTION CORNER LAT. = 32.3119919°N LONG. = 103.5687767°W NMSP EAST (FT) N = 478077.43 E = 777535.58</p> <p>W/4 CORNER SEC. 15 LAT. = 32.3047319°N LONG. = 103.5687767°W NMSP EAST (FT) N = 475436.25 E = 777556.78</p> <p>SW CORNER SEC. 15 LAT. = 32.2974757°N LONG. = 103.5687592°W NMSP EAST (FT) N = 472796.48 E = 777580.98</p>		<p>" SURVEYOR CERTIFICATION</p> <p>I hereby certify that the well location shown on this plat was plotted from field notes of actual surveys made by me or under my supervision, and that the same is true and correct to the best of my belief.</p> <p>NOVEMBER 2018 Date of Survey</p> <p><i>[Signature]</i> Signature and Seal of Professional Surveyor</p> <p>Certificate Number: FILMONT, JARAMILLO, PLS 12797 SURVEY NO. 3669D</p>		

**SECTION 15, TOWNSHIP 23 SOUTH, RANGE 33 EAST, N.M.P.M.
LEA COUNTY, STATE OF NEW MEXICO
SITE MAP**

NOTE: LATITUDE AND LONGITUDE COORDINATES ARE SHOWN USING THE NORTH AMERICAN DATUM OF 1983 (NAD83). LISTED NEW MEXICO STATE PLANE EAST COORDINATES ARE GRID (NAD83). BASIS OF BEARING AND DISTANCES USED ARE NEW MEXICO STATE PLANE EAST COORDINATES MODIFIED TO THE SURFACE. ELEVATION VALUES ARE NAVD88.



010 50 100 200
SCALE 1" = 100'

DIRECTIONS TO LOCATION

FROM THE INTERSECTION OF STATE HIGHWAY 128 AND CR 21 (DELAWARE BASIN) GO NORTH ON CR 21 APPROX. 6.1 MILES TO A LEASE ROAD ON LEFT (WEST) TURN WEST GO APPROX. 3.1 MILES TO A LEASE ROAD ON RIGHT (NORTH), TURN NORTH GO 0.1 MILE TO A LEASE ROAD ON LEFT (WEST), TURN WEST GO APPROX. 634' TO THE NORTHEAST PAD CORNER FOR THIS LOCATION.

**DEVON ENERGY PRODUCTION COMPANY, L.P.
NORTH THISTLE 15-10 STATE COM 2H
LOCATED 415 FT. FROM THE SOUTH LINE
AND 810 FT. FROM THE WEST LINE OF
SECTION 15, TOWNSHIP 23 SOUTH,
RANGE 33 EAST, N.M.P.M.
LEA COUNTY, STATE OF NEW MEXICO**

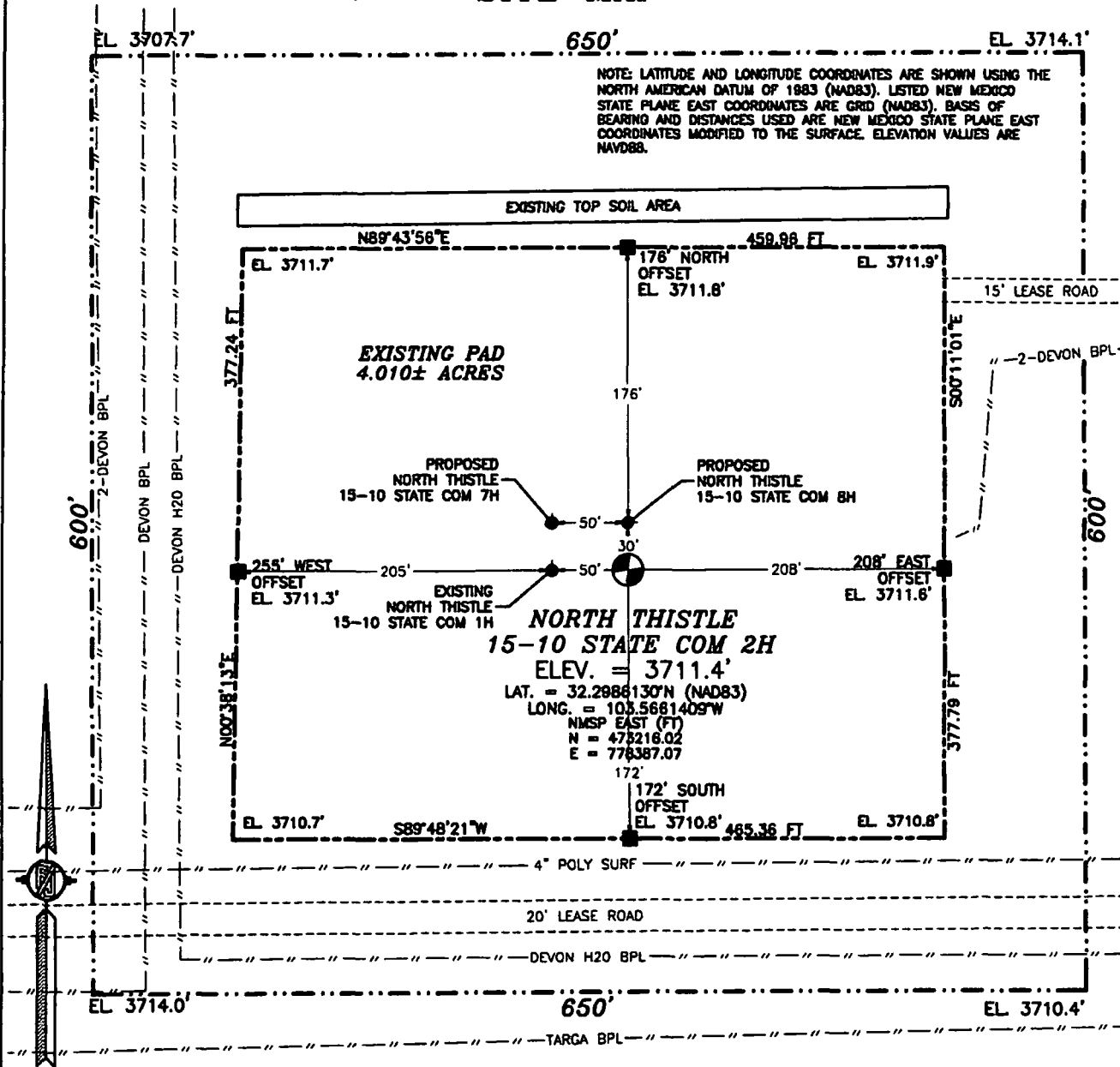
NOVEMBER 8, 2018

SURVEY NO. 3669D

MADRON SURVEYING, INC. 301 SOUTH CANAL (575) 234-3341 **CARLSBAD, NEW MEXICO**

**SECTION 15, TOWNSHIP 23 SOUTH, RANGE 33 EAST, N.M.P.M.
LEA COUNTY, STATE OF NEW MEXICO
SITE MAP**

NOTE: LATITUDE AND LONGITUDE COORDINATES ARE SHOWN USING THE NORTH AMERICAN DATUM OF 1983 (NAD83). LISTED NEW MEXICO STATE PLANE EAST COORDINATES ARE GRID (NAD83). BASIS OF BEARING AND DISTANCES USED ARE NEW MEXICO STATE PLANE EAST COORDINATES MODIFIED TO THE SURFACE. ELEVATION VALUES ARE NAVD88.



010 50 100 200
SCALE 1" = 100'

DIRECTIONS TO LOCATION

FROM THE INTERSECTION OF STATE HIGHWAY 128 AND CR 21 (DELAWARE BASIN) GO NORTH ON CR 21 APPROX. 6.1 MILES TO A LEASE ROAD ON LEFT (WEST) TURN WEST GO APPROX. 3.1 MILES TO A LEASE ROAD ON RIGHT (NORTH), TURN NORTH GO 0.1 MILE TO A LEASE ROAD ON LEFT (WEST), TURN WEST GO APPROX. 634' TO THE NORTHEAST PAD CORNER FOR THIS LOCATION.

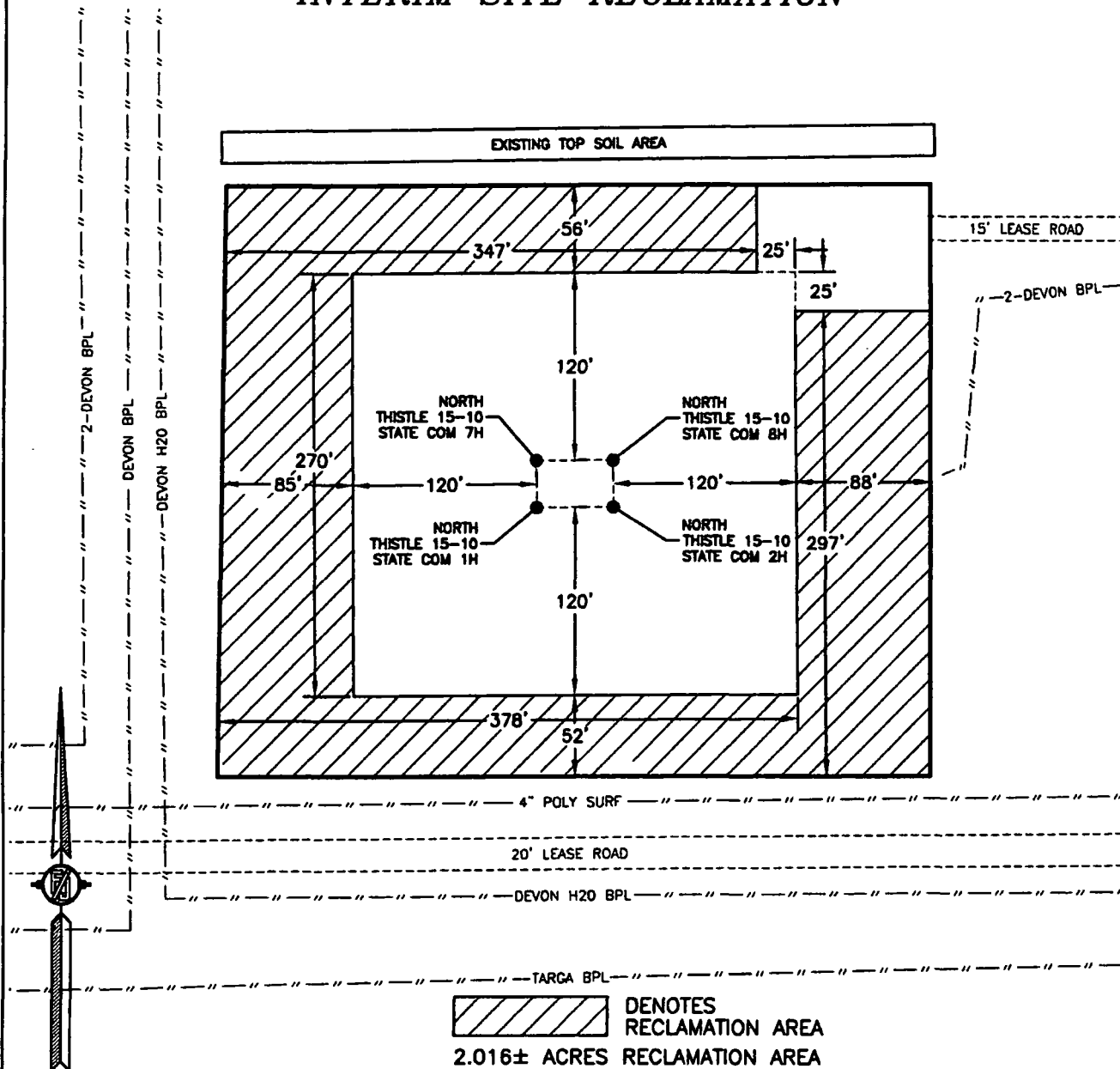
**DEVON ENERGY PRODUCTION COMPANY, L.P.
NORTH THISTLE 15-10 STATE COM 2H
LOCATED 415 FT. FROM THE SOUTH LINE
AND 810 FT. FROM THE WEST LINE OF
SECTION 15, TOWNSHIP 23 SOUTH,
RANGE 33 EAST, N.M.P.M.
LEA COUNTY, STATE OF NEW MEXICO**

NOVEMBER 8, 2018

SURVEY NO. 3869D

MADRON SURVEYING, INC. 301 SOUTH CANAL (575) 234-3341 CARLSBAD, NEW MEXICO

**SECTION 15, TOWNSHIP 23 SOUTH, RANGE 33 EAST, N.M.P.M.
LEA COUNTY, STATE OF NEW MEXICO
INTERIM SITE RECLAMATION**



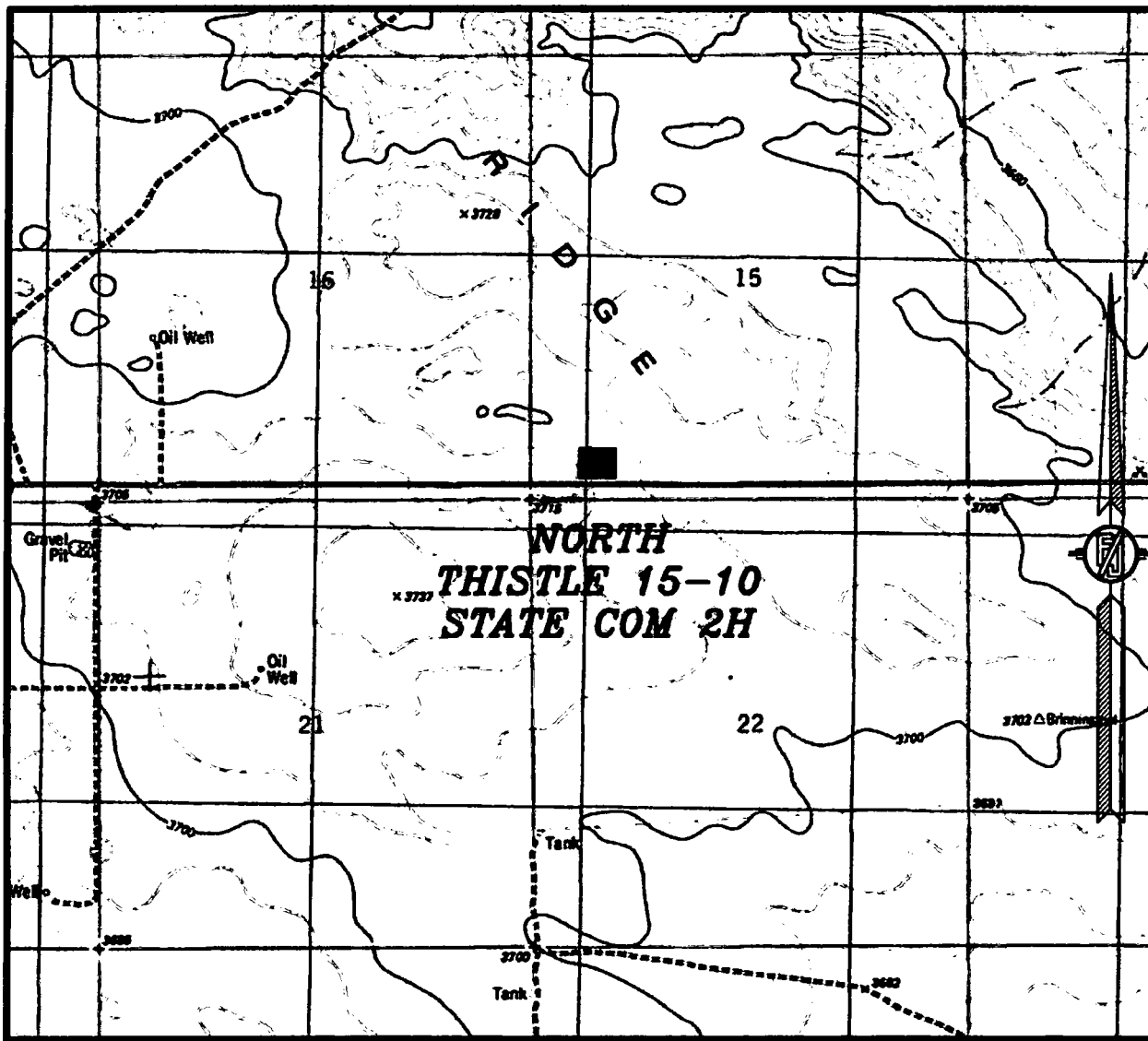
**DEVON ENERGY PRODUCTION COMPANY, L.P.
NORTH THISTLE 15-10 STATE COM 2H
LOCATED 415 FT. FROM THE SOUTH LINE
AND 810 FT. FROM THE WEST LINE OF
SECTION 15, TOWNSHIP 23 SOUTH,
RANGE 33 EAST, N.M.P.M.
LEA COUNTY, STATE OF NEW MEXICO**

NOVEMBER 8, 2018

SURVEY NO. 3869D

MADRON SURVEYING, INC. 301 SOUTH CANAL (575) 234-3341 CARLSBAD, NEW MEXICO

15, TOWNSHIP 23 SOUTH, RANGE 33 EAST, N.M.P.M.
LEA COUNTY, STATE OF NEW MEXICO
LOCATION VERIFICATION MAP



USGS QUAD MAP: TIP TOP WELLS

NOT TO SCALE

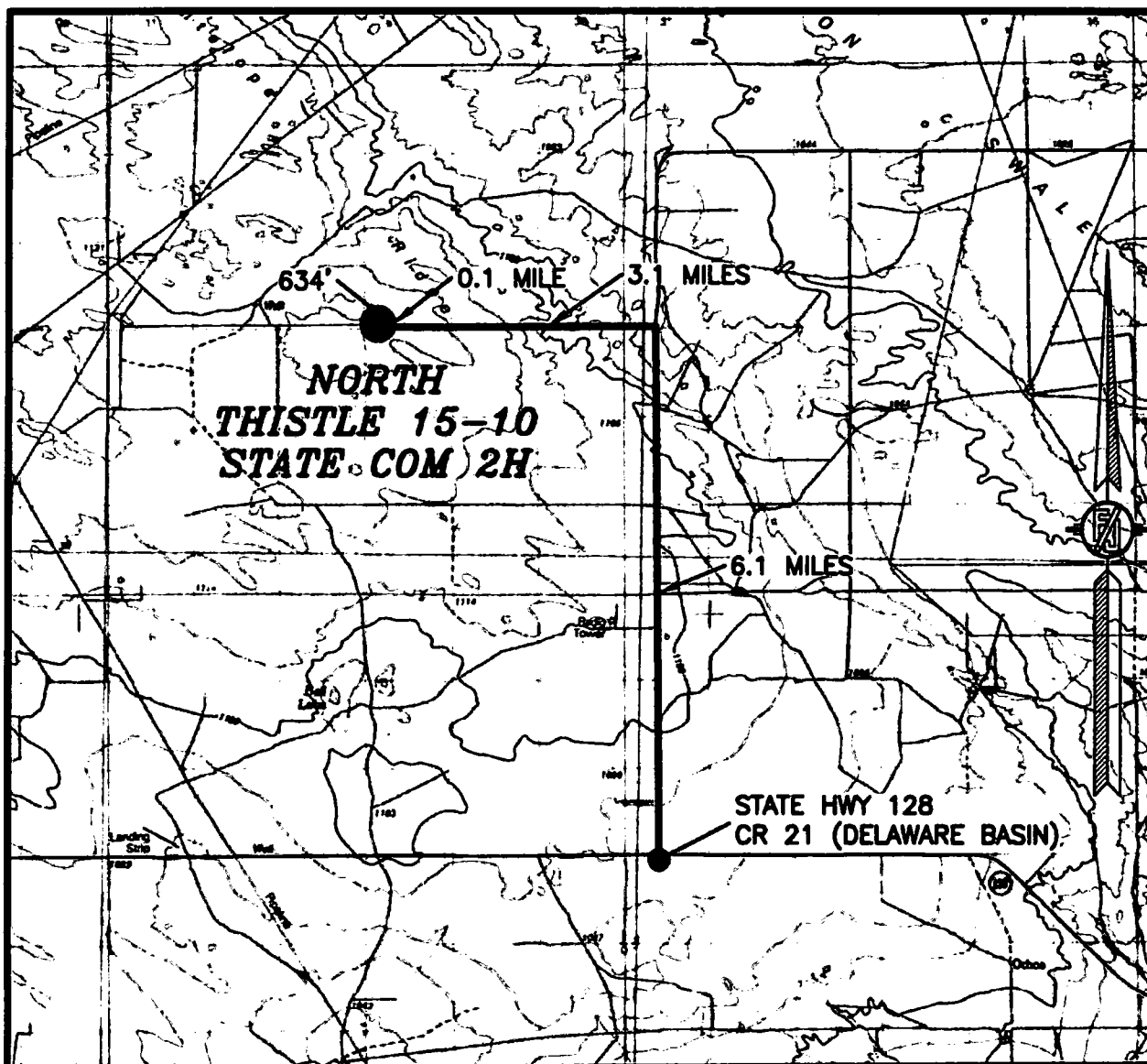
DEVON ENERGY PRODUCTION COMPANY, L.P.
NORTH THISTLE 15-10 STATE COM 2H
LOCATED 415 FT. FROM THE SOUTH LINE
AND 810 FT. FROM THE WEST LINE OF
SECTION 15, TOWNSHIP 23 SOUTH,
RANGE 33 EAST, N.M.P.M.
LEA COUNTY, STATE OF NEW MEXICO

NOVEMBER 8, 2018

SURVEY NO. 3669D

MADRON SURVEYING, INC. 301 SOUTH CANAL (575) 234-3341 **CARLSBAD, NEW MEXICO**

**SECTION 15, TOWNSHIP 23 SOUTH, RANGE 33 EAST, N.M.P.M.
LEA COUNTY, STATE OF NEW MEXICO
VICINITY MAP**



DISTANCES IN MILES

NOT TO SCALE

DIRECTIONS TO LOCATION

FROM THE INTERSECTION OF STATE HIGHWAY 128 AND CR 21 (DELAWARE BASIN) GO NORTH ON CR 21 APPROX. 6.1 MILES TO A LEASE ROAD ON LEFT (WEST) TURN WEST GO APPROX. 3.1 MILES TO A LEASE ROAD ON RIGHT (NORTH), TURN NORTH GO 0.1 MILE TO A LEASE ROAD ON LEFT (WEST), TURN WEST GO APPROX. 634' TO THE NORTHEAST PAD CORNER FOR THIS LOCATION.

**DEVON ENERGY PRODUCTION COMPANY, L.P.
NORTH THISTLE 15-10 STATE COM 2H**

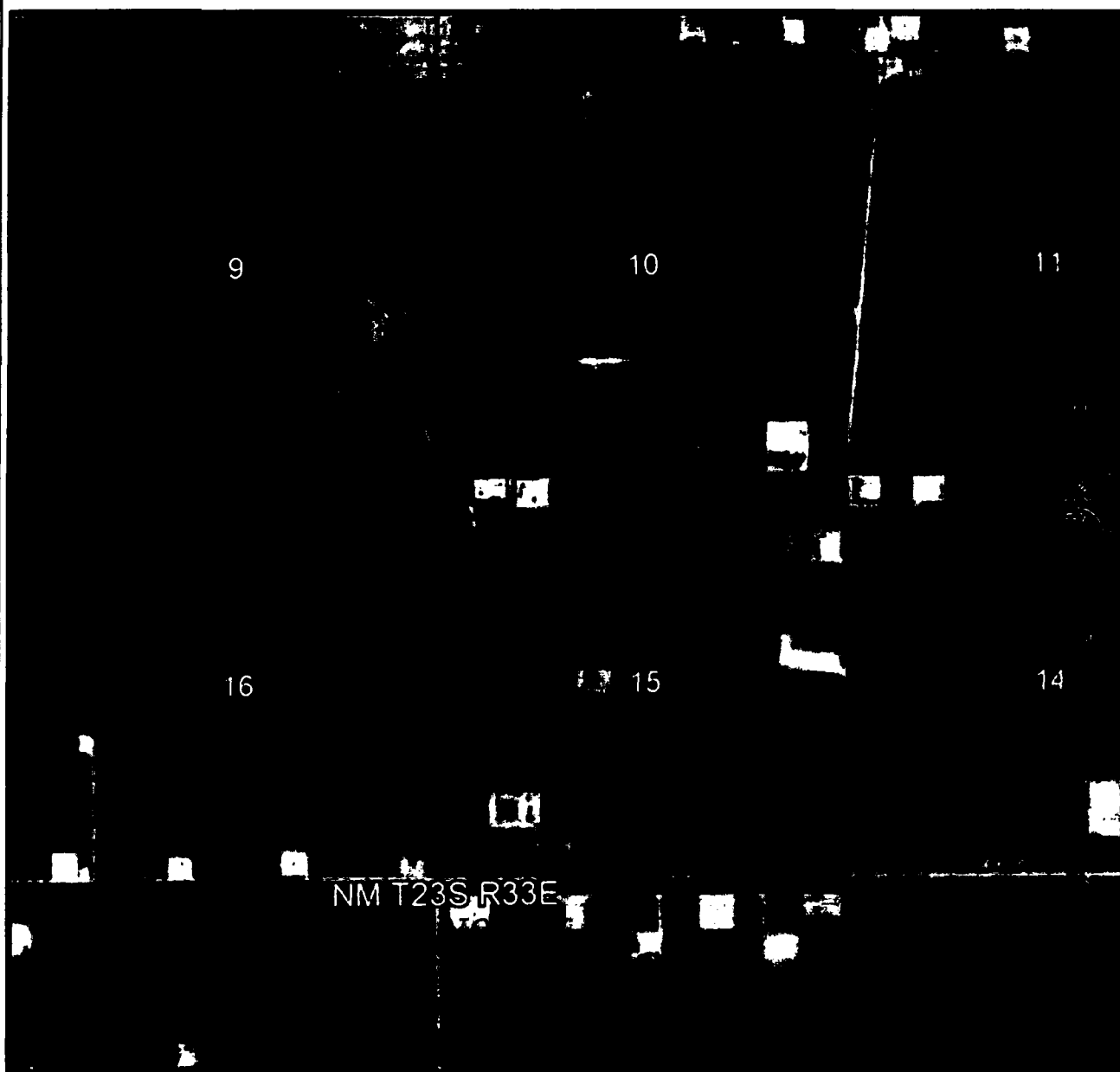
**LOCATED 415 FT. FROM THE SOUTH LINE
AND 810 FT. FROM THE WEST LINE OF
SECTION 15, TOWNSHIP 23 SOUTH,
RANGE 33 EAST, N.M.P.M.
LEA COUNTY, STATE OF NEW MEXICO**

NOVEMBER 8, 2018

SURVEY NO. 3669D

MADRON SURVEYING, INC. 301 SOUTH CANAL (575) 234-3341 CARLSBAD, NEW MEXICO

**SECTION 15, TOWNSHIP 23 SOUTH, RANGE 33 EAST, N.M.P.M.
LEA COUNTY, STATE OF NEW MEXICO
AERIAL PHOTO**



NOT TO SCALE
AERIAL PHOTO:
GOOGLE EARTH
NOV. 2017

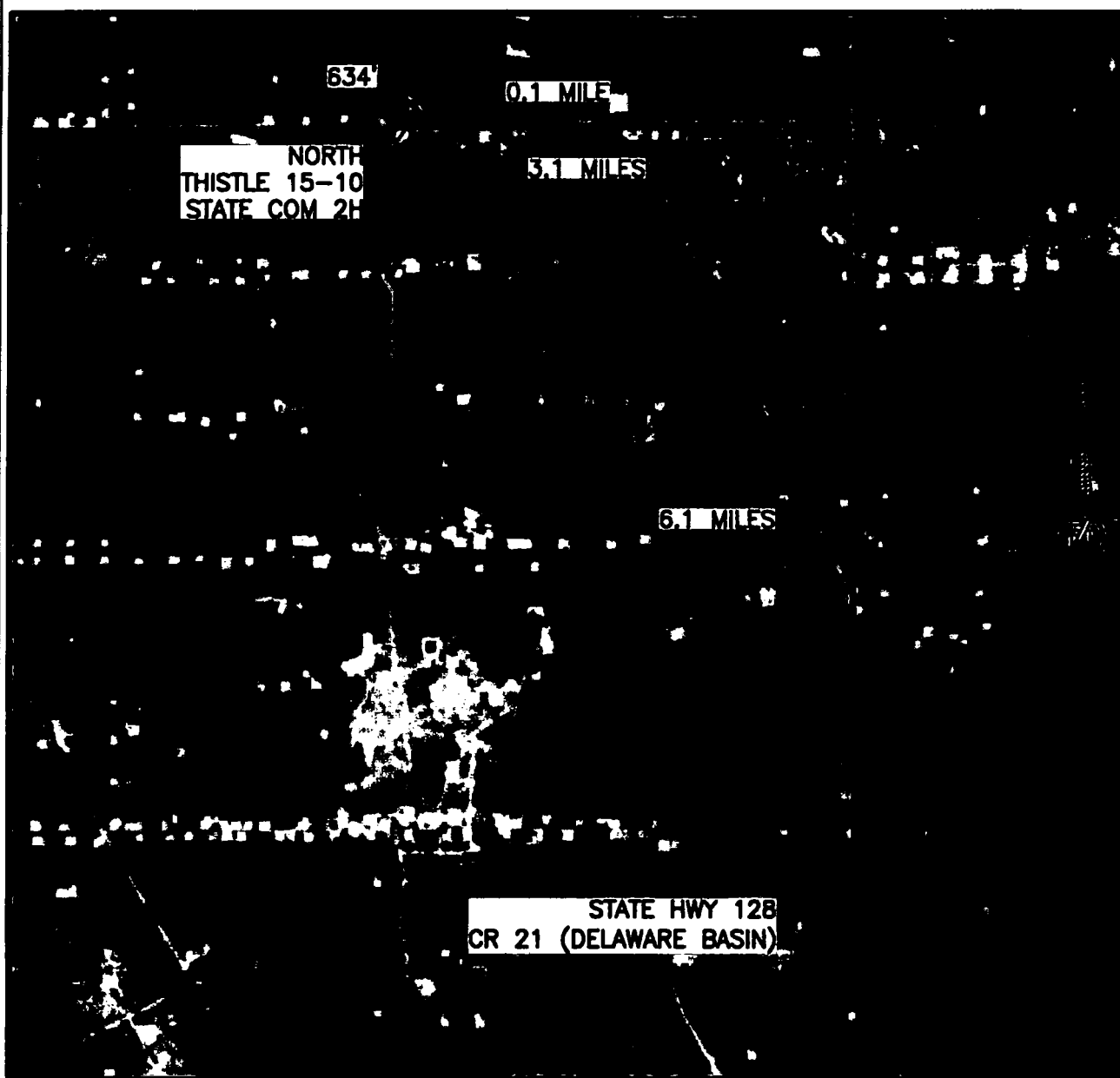
**DEVON ENERGY PRODUCTION COMPANY, L.P.
NORTH THISTLE 15-10 STATE COM 2H
LOCATED 415 FT. FROM THE SOUTH LINE
AND 810 FT. FROM THE WEST LINE OF
SECTION 15, TOWNSHIP 23 SOUTH,
RANGE 33 EAST, N.M.P.M.
LEA COUNTY, STATE OF NEW MEXICO**

NOVEMBER 8, 2018

SURVEY NO. 3669D

MADRON SURVEYING, INC. 301 SOUTH CANAL (575) 234-3341 **CARLSBAD, NEW MEXICO**

SECTION 15, TOWNSHIP 23 SOUTH, RANGE 33 EAST, N.M.P.M.
LEA COUNTY, STATE OF NEW MEXICO
AERIAL ACCESS ROUTE MAP



NOT TO SCALE
AERIAL PHOTO:
GOOGLE EARTH
NOV. 2017

DEVON ENERGY PRODUCTION COMPANY, L.P.
NORTH THISTLE 15-10 STATE COM 2H
LOCATED 415 FT. FROM THE SOUTH LINE
AND 810 FT. FROM THE WEST LINE OF
SECTION 15, TOWNSHIP 23 SOUTH,
RANGE 33 EAST, N.M.P.M.
LEA COUNTY, STATE OF NEW MEXICO

NOVEMBER 8, 2018

SURVEY NO. 3669D

MADRON SURVEYING, INC. 301 SOUTH CANAL (575) 234-3341 **CARLSBAD, NEW MEXICO**