

Submit 1 Copy To Appropriate District Office
District I - (575) 393-6161
1625 N. French Dr., Hobbs, NM 88240
District II - (575) 748-1283
811 S. First St., Artesia, NM 88210
District III - (505) 334-6178
1000 Rio Brazos Rd., Aztec, NM 87410
District IV - (505) 476-3460
1220 S. St. Francis Dr., Santa Fe, NM 87505

State of New Mexico
Energy, Minerals and Natural Resources

OIL CONSERVATION DIVISION
1220 South St. Francis Dr.
Santa Fe, NM 87505

Form C-103
Revised July 18, 2013

SUNDRY NOTICES AND REPORTS ON WELLS (DO NOT USE THIS FORM FOR PROPOSALS TO DRILL OR TO DEEPEN OR PLUG BACK TO A DIFFERENT RESERVOIR. USE "APPLICATION FOR PERMIT" (FORM C-101) FOR SUCH PROPOSALS.)		WELL API NO. 30-025-36529
1. Type of Well: Oil Well <input type="checkbox"/> Gas Well <input checked="" type="checkbox"/> Other JND		5. Indicate Type of Lease STATE <input type="checkbox"/> FEE <input checked="" type="checkbox"/>
2. Name of Operator J. COOPER ENTERPRISES		6. State Oil & Gas Lease No.
3. Address of Operator P.O. Box 65 MONUMENT, NM 88265		7. Lease Name or Unit Agreement Name COOPER 8
4. Well Location Unit Letter H : 1850 feet from the NORTH line and 630 feet from the EAST line Section 8 Township 20S Range 37E NMPM County LEA		8. Well Number 2
11. Elevation (Show whether DR, RKB, RT, GR, etc.) 3,550 GL		9. OGRID Number 244835
		10. Pool name or Wildcat MONUMENT - SAN ANDRES

12. Check Appropriate Box to Indicate Nature of Notice, Report or Other Data

NOTICE OF INTENTION TO:		SUBSEQUENT REPORT OF:	
PERFORM REMEDIAL WORK <input type="checkbox"/>	PLUG AND ABANDON <input type="checkbox"/>	REMEDIAL WORK <input checked="" type="checkbox"/>	ALTERING CASING <input type="checkbox"/>
TEMPORARILY ABANDON <input type="checkbox"/>	CHANGE PLANS <input type="checkbox"/>	COMMENCE DRILLING OPNS <input type="checkbox"/>	P AND A <input type="checkbox"/>
PULL OR ALTER CASING <input type="checkbox"/>	MULTIPLE COMPL <input type="checkbox"/>	CASING/CEMENT JOB <input type="checkbox"/>	
DOWNHOLE COMMINGLE <input type="checkbox"/>			
CLOSED-LOOP SYSTEM <input type="checkbox"/>			
OTHER: <input type="checkbox"/>		OTHER: <input type="checkbox"/>	

13. Describe proposed or completed operations. (Clearly state all pertinent details, and give pertinent dates, including estimated date of starting any proposed work). SEE RULE 19.15.7.14 NMAC. For Multiple Completions: Attach wellbore diagram of proposed completion or recompletion.

REPLACED 3 1/2" INJECTION TUBING WITH NEW 3 1/2", 9.3 FT, 1.55, 8⁶
FIBERGLASS LINED. REDRESSED PACKER. PACKER @ 4,275.79' KB
PERFORMED SUCCESSFUL MIT ON 9/16/19.
COPIES OF WELL WORK DETAILS, MIT, CHART & WB DIAGRAM
ATTACHED

Spud Date:

9/10/19

Rig Release Date:

9/16/19

I hereby certify that the information above is true and complete to the best of my knowledge and belief.

SIGNATURE

[Signature]

TITLE

AGENT - HOURS OF

DATE

9/20/19

Type or print name

MICHAEL STEWART

E-mail address:

Mstewart@hobbsoil.com

PHONE:

(505) 682-1122

For State Use Only

APPROVED BY:

[Signature]

TITLE

C. O.

A

DATE

9-20-19

Conditions of Approval (if any):

J. Cooper Enterprises
DAILY OPERATIONS REPORT
Cooper 8 #2

September 9, 2019 Monday (Day 1)

D. Stewart traveled from base to location. Found well being injected into w/ ??? psi (gauge on tbg is broken). 5-1/2" x 3-1/2" annulus on vacuum (gauge on annulus is broken). Checked anchors, anchors tested 9/2019. Traveled to off-loading/ TB & review procedures w/ pusher. Traveled to Cooper the 17 #1 new drill location & looked for stake. Could not find stake where GPS shows. Note: there are various pipeline running through proposed location. Traveled back to base. SDON, CMIC - D. Stewart. Scheduled services & equipment to start workover on Cooper 8 #2 SWD.

September 10, 2019 Tuesday (Day 2)

D. Stewart traveled from base to location. Removed fencing from around WH, sucked cellar out w/ VT. Longhorn Tubular on location w/ (2) rig mats, (1) set of pipe racks & catwalk. Longhorn's forklift off loaded & set location. Basic WSU on location. Change clothes safety/ JSA meeting. MIRU WSU. Found SI Tbg on vacuum, ND Inj WH assembly, PU on 3-1/2" x 6' Sub & MU on Tbg in the hole. Un-seated tbg out of slips & NU BOP. Lunch. Gravity Pkr hand on location. Latched onto 3-1/3" tbg & released Pkr. Began POOH w/ tbg & Pkr assembly standing 3-1/2" tbg back in derrick. POOH w/ 4 jts of tbg found (2) holes in jt # 5. (10' up from bottom pin). Continued POOH w/ Pkr assembly standing tbg back. Found Jt # 32 w/ 2 holes heavy scale & corrosion. Tbg has heavy scale corrosion down to \pm 2,000' (64 jts below surface). Numerous pins have chipped IPC and starting to show corrosion. Last \pm 68 jts have no corrosion, IPC on pins not chipped, & pins/boxes are good. LD Pkr, SWI w/ BOP cleaned & secured location. Pkr looked to be in good condition, Gravity Hand delivered Pkr to shop to inspect & redress. Crew left location @ 4:32 PM. D. Stewart traveled back to base. SDON, CMIC - D. Stewart.

September 11, 2019 Wednesday (Day 3)

D. Stewart traveled from base to HeLMS's yard. Meet Longhorn forklift & haul truck. Load 160 jts 2-7/8" Tbg. D. Stewart traveled from yard to location. Basic WSU crew on location. Change clothes safety/ JSA meeting. Longhorn on location w/ 160 jts 2-7/8" WS + (1) set of pipe racks. Off load rack & tally 161 jts 2-7/8" tbg. PU on 4-3/4" MT bit + 5-1/2" Csg scrapper & RIH on 2-7/8" WS picking up singles. Lunch. Continue RIH w/ bit & scrapper. Tagged hard bottom @ 4,990', reported TOC above CIBP @ 4,990'. No/minimal fill. POOH w/ bit & scrapper LD WS. Heavy rain & lightning, SD to let storm pass. Continue POOH w/ bit & scrapper LD WS. LD bit & scrapper, SWI w/ BOP. Changed out tools & BOP rams to 3-1/2". Cleaned & secured location. Crew left location @ 6:38. D. Stewart traveled back to base. SDON, CMIC - D. Stewart.

September 12, 2019 Thursday (Day 4)

D. Stewart traveled from base to location. Basic WSU crew on location. Change clothes safety/ JSA meeting. Finish RU 3-1/2" tools. RIH w/ 3-1/2" IPC tbg out of derrick open ended. Cooper's backhoe on location, transfer 2-7/8" WS off racks to side of location. MIRU Longhorn's PU/LD machine. POOH w/ 3-1/2" IPC tbg LD on racks. Lunch. Continue POOH w/ 3-1/2" IPC tbg LD on racks. OOH w/ 3-1/2" IPC tbg, SWI w/ BOP. Stand-by for delivery of new tbg. KC Pipe on location w/ 143 jts 3-1/2", 9.3 ppf, J-55, 8rd EUE CLS Glass bore tubing. Longhorn forklift off loaded & racked. Loaded 161 jts 2-7/8" WS for return to HeLMS O&G. Crew removed thread protectors on callers & tallied pipe. Cleaned & secured location. Crew left location @ 3:38. D. Stewart traveled back to base. SDON, CMIC - D. Stewart.

J. Cooper Enterprises
DAILY OPERATIONS REPORT
Cooper 8 #2

September 13, 2019 Friday (Day 5)

D. Stewart traveled from base to location. Basic WSU crew, Longhorn PU/LD operator, CLS Field Tech, Gravity Pkr Hand on location. Change clothes safety/ JSA meeting. PU on redressed on-off tool and new 2-7/8" x 3-1/2" SS XO & MU on Jt #1 of 3-1/2" FG lined tbg. PU on re-dressed 5-1/2" x 2-7/8" AS 1-X packer w/ 2.31 F Profile Nipple & latch onto it w/ on-off tool on 3-1/2" FG lined tbg. RIH w/ BHA on 3-1/2", 9.3 ppf, J-55, 8rd EUE CLS Glass bore lined tbg, utilizing CLS Tech to floor drift all 3-1/2" & install corrosion barrier rings, monitoring MU & torque. Max MU @ 2,850 ft/lbs - 950 psi pump pressure in low gear for the Foster tongs & optimum MU @ 2,280 ft/lbs - 840 psi pump pressure in low gear. 80 jts in, fill-up tbg w/ 14 bbls FW. Continue RIH w/ Pkr assembly on 3-1/2" tbg. 115 jts in the hole, lunch. Continue RIH w/ Pkr assembly on 3-1/2" tbg. In hole w/ Pkr assembly + 138 jts 3-1/2", FG lined tbg. Set Pkr w/ 21 pts in compression @ 4,282.03' KB. Filled annulus w/ FW, stand-by for PT for pretest. RU PT w/ recording clock on 5-1/2" x 3-1/2" annulus, L&T annulus. BOP leaking work to get BOP to seal. BOP would not seal, ND BOP, set tbg in slips, NU & packed off WH. L&T annulus to 750 psi, monitor for 30 mins. Received a good chart. ND WH, PU tbg out of slips & released off Pkr w/ on-off tool. Set tbg back in slips, NU & packed off WH. RU PT on 5-1/2" x 3-1/2" annulus & circulated 65 bbls Pkr fluid displacing to VT out tbg. ND WH, PU tbg out of slips, RIH & latched back on to Pkr set @ 4,282'. Packed off Pkr pulling up to 20 pts over. Set 3-1/2" tbg in slips w/ 21 pts in compression. NU & packed off WH. RU PT w/ recording clock on 5-1/2" x 3-1/2" annulus, L&T annulus to 725 psi, monitored for 30 mins, received good chart. RD PT, NU Master valve assembly on 3-1/2" tbg. Cleaned & secured location. Crew left location @ 7:35. D. Stewart traveled back to base. SDON, CMIC - D. Stewart.

September 14, 2019 Saturday (Day 6)

D. Stewart traveled from base to location. Basic WSU crew, Longhorn PU/LD operator, CLS Field Tech, Gravity Pkr Hand on location. Change clothes safety/ JSA meeting. PU on redressed on-off tool and new 2-7/8" x 3-1/2" SS XO & MU on Jt #1 of 3-1/2" FG lined tbg. PU on re-dressed 5-1/2" x 2-7/8" AS 1-X packer w/ 2.31 F Profile Nipple & latch onto it w/ on-off tool on 3-1/2" FG lined tbg. RIH w/ BHA on 3-1/2", 9.3 ppf, J-55, 8rd EUE CLS Glass bore lined tbg, utilizing CLS Tech to floor drift all 3-1/2" & install corrosion barrier rings, monitoring MU & torque. Max MU @ 2,850 ft/lbs - 950 psi pump pressure in low gear for the Foster tongs & optimum MU @ 2,280 ft/lbs - 840 psi pump pressure in low gear. 80 jts in, fill-up tbg w/ 14 bbls FW. Continue RIH w/ Pkr assembly on 3-1/2" tbg. 115 jts in the hole, lunch. Continue RIH w/ Pkr assembly on 3-1/2" tbg. In hole w/ Pkr assembly + 138 jts 3-1/2", FG lined tbg. Set Pkr w/ 21 pts in compression @ 4,282.03' KB. Filled annulus w/ FW, stand-by for PT for pretest. RU PT w/ recording clock on 5-1/2" x 3-1/2" annulus, L&T annulus. BOP leaking work to get BOP to seal. BOP would not seal, ND BOP, set tbg in slips, NU & packed off WH. L&T annulus to 750 psi, monitor for 30 mins. Received a good chart. ND WH, PU tbg out of slips & released off Pkr w/ on-off tool. Set tbg back in slips, NU & packed off WH. RU PT on 5-1/2" x 3-1/2" annulus & circulated 65 bbls Pkr fluid displacing to VT out tbg. ND WH, PU tbg out of slips, RIH & latched back on to Pkr set @ 4,282'. Packed off Pkr pulling up to 20 pts over. Set 3-1/2" tbg in slips w/ 21 pts in compression. NU & packed off WH. RU PT w/ recording clock on 5-1/2" x 3-1/2" annulus, L&T annulus to 725 psi, monitored for 30 mins, received good chart. RD PT, NU Master valve assembly on 3-1/2" tbg. Cleaned & secured location. Crew left location @ 7:35. D. Stewart traveled back to base. SDON, CMIC - D. Stewart.

September 16, 2019 Monday (Day 7)

D. Stewart traveled from base to location. Found SITB = 0 psi, SICP = 0 psi, SI surface Csg = 0 psi. Stand-by for PT & NMOCD Representative. NMOCD Rep Gary Robinson & MacLasky PT on location. MIRU PT on 5-1/2" x 3-1/2" annulus w/ pressure recording clock. Loaded annulus to 560 psi. Monitored pressure for 30 mins. Received good chart w/ no leak off. NMOCD Rep signed off on chart. Bled pressure back to PT & RD PT off annulus. RU PT on 3-1/2" tbg & RU injection flowline w/ valve. Loaded 3-1/2" tbg w/ 4 bbls FW, pressured tbg up to 1,200 psi & popped pump out plug. Continued pumping FW down 3-1/2" tbg @ 4 BPM - 50 psi. Pumped 20 bbls FW & SD, tbg went on vacuum. RD PT. NU WH w/ gauges on annulus & 3-1/2" tbg. J. Cooper turned TB into well & started pumping down 3-1/2" tbg. Found no visual leaks @ well. Turned operations over to J. Cooper. D. Stewart traveled back to base. SDON, CMIC D. Stewart.

State of New Mexico
 Energy, Minerals and Natural Resources Department
 Oil Conservation Division Hobbs District Office

BRADENHEAD TEST REPORT

Operator Name J. COOPER Enterprises		API Number 30-025-36529
Property Name COOPER 8		Well No. #2

Surface Location

UL - Lot H	Section 8	Township 20S	Range 37E	Feet from 1850	N/S Line N	Feet from 630	E/W Line E	County LEA
----------------------	---------------------	------------------------	---------------------	--------------------------	----------------------	-------------------------	----------------------	----------------------

Well Status

TA'D WELL YES	NO	YES	SHUT-IN NO	INJ	INJECTOR (SWD)	OIL	PRODUCER GAS	DATE 9-16-19
------------------	----	-----	---------------	-----	--------------------------	-----	-----------------	------------------------

OBSERVED DATA

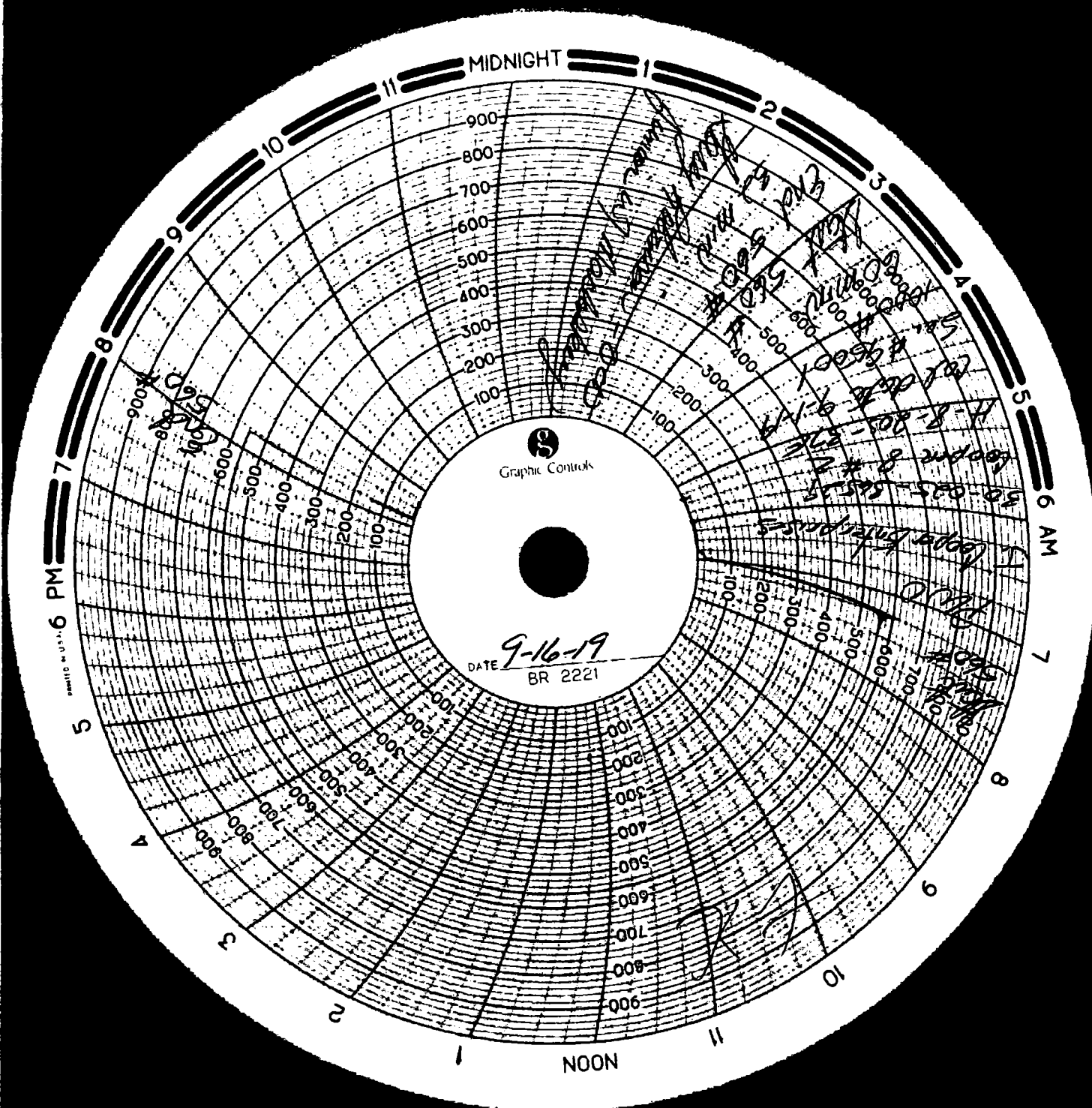
	(A) Surface	(B) Interm (1)	(C) Interm (2)	(D) Prod Casing	(E) Tubing
Pressure	0	N/A	N/A	0	0
Flow Characteristics					
Puff	Y/N	Y/N	Y/N	Y/N	CO2 <input checked="" type="checkbox"/>
Steady Flow	Y/N	Y/N	Y/N	Y/N	WTR <input checked="" type="checkbox"/>
Surges	Y/N	Y/N	Y/N	Y/N	GAS <input type="checkbox"/>
Down to nothing	Y/N	Y/N	Y/N	Y/N	Type of fluid injected for stimulation if applicable
Gas or Oil	Y/N	Y/N	Y/N	Y/N	
Water	Y/N	Y/N	Y/N	Y/N	

Remarks - Please state for each string (A,B,C,D,E) pertinent information regarding bleed down or continuous build up if applies.

Two

Signature: [Signature]		OIL CONSERVATION DIVISION
Printed name: MICHAEL STEWART		Entered into RBDMS
Title: PRESIDENT HEMP OIL & GAS CONSULTANT		Re-test: [Signature]
E-mail Address: MStewart@hempoil.com		
Date: 9/20/19	Phone: (432) 682,1122	
Witness: [Signature]		

INSTRUCTIONS ON BACK OF THIS FORM



J. Cooper Enterprises, Inc
Actual Completed Wellbore Diagram

WELL NAME:	Cooper 8 #2			FIELD:	Monument - San Andres		
LOCATION:	1850' FNL & 630' FEL, Sec 8, T20S, R37E, Unit H			COUNTY:	Lea	STATE:	NM
ELEVATION:	GL = 3,550'; KB = 3,587.5 (17' 5" KB)			SPUD DATE:	2/4/2004	COMP DATE:	4/28/2004
API#	42-025-36529			P&A DATE:	10/20/2013	RE-ENTRY DATE:	2/2/2017
				PREPARED BY:	D. Stewart		
	DEPTH	HOLE SIZE	SIZE	WEIGHT	GRADE	THREAD	CEMENT / TOC
CASING:	1,135	12-1/4"	8-5/8"	24 #/ft	J-55	ST&C	320 sx lead, 200 sx tail, Circ 140 sx to Surface
CASING:	7,500	7-7/8"	5-1/2"	17 #/ft	N-80	LT&C	1,830 sx lead, 750 sx tail, Circ 275 sx to Surface
CASING:							
TUBING:	4,258		3-1/2"	9.3 #/ft	J-55 FG CL	8rd EUE	

