

UNITED STATES  
DEPARTMENT OF THE INTERIOR  
BUREAU OF LAND MANAGEMENTFORM APPROVED  
OMB No. 1004-0137  
Expires: July 31, 2010

## WELL COMPLETION OR RECOMPLETION REPORT AND LOG

**1a. Type of Well** ☒ Oil Well ☐ Gas Well ☐ Dry ☐ Other  
**b. Type of Completion** ☒ New Well ☐ Work Over ☐ Deepen ☐ Plug Back ☐ Diff. Resvr.  
Other \_\_\_\_\_

**2. Name of Operator** CONOCOPHILLIPS COMPANY **Contact:** RHONDA ROGERS  
**E-Mail:** rogers@conocophillips.com

**3. Address** 925 N ELDRIDGE PARKWAY  
HOUSTON, TX 77079 **3a. Phone No. (include area code)**  
Ph: 832-486-2737

**4. Location of Well (Report location clearly and in accordance with Federal requirements)\***  
At surface **Sec 8 T17S R32E Mer NMP**  
NESW 2080FSL 2350FWL 32.847637 N Lat, 103.789566 W Lon  
At top prod interval reported below **Sec 8 T17S R32E Mer NMP**  
NWSW 1648FSL 2160FWL 32.846432 N Lat, 103.790268 W Lon  
At total depth **Sec 7 T17S R32E Mer NMP**  
Lot 3 1650FSL 330FWL 32.846481 N Lat, 103.813438 W Lon

**5. Lease Serial No.** NMLC029406B  
**6. If Indian, Allottee or Tribe Name**  
**7. Unit or CA Agreement Name and No.** NMNM138364  
**8. Lease Name and Well No.** PERIDOT 8 FEDERAL 3H  
**9. API Well No.** 30-025-44589-00-S1  
**10. Field and Pool, or Exploratory** MALJAMAR  
**11. Sec., T., R., M., or Block and Survey or Area** Sec 8 T17S R32E Mer NMP  
**12. County or Parish** LEA **13. State** NM  
**14. Date Spudded** 06/26/2018 **15. Date T.D. Reached** 07/25/2018 **16. Date Completed**  
☐ D & A ☒ Ready to Prod. 06/08/2019  
**17. Elevations (DF, KB, RT, GL)\*** 4047 GL  
**18. Total Depth:** MD 13242 TVD 5462 **19. Plug Back T.D.:** MD 13222 TVD 5461 **20. Depth Bridge Plug Set:** MD TVD  
**21. Type Electric & Other Mechanical Logs Run (Submit copy of each)** GR COMPENSATED NEUT **22. Was well cored?** ☒ No ☐ Yes (Submit analysis)  
Was DST run? ☒ No ☐ Yes (Submit analysis)  
Directional Survey? ☐ No ☒ Yes (Submit analysis)

## 23. Casing and Liner Record (Report all strings set in well)

Hole Size	Size/Grade	Wt. (#/ft.)	Top (MD)	Bottom (MD)	Stage Cementer Depth	No. of Sk. & Type of Cement	Slurry Vol. (BBL)	Cement Top*	Amount Pulled
17.500	13.375 J-55	54.5	0	861		776	219	0	
12.250	9.625 J-55	40.0	0	2221		664	223	0	
8.750	7.000 L-80	20.0	0	5090		2928	500	0	
8.750	5.500 L-80	20.0	0	13222				0	

## 24. Tubing Record

Size	Depth Set (MD)	Packer Depth (MD)	Size	Depth Set (MD)	Packer Depth (MD)	Size	Depth Set (MD)	Packer Depth (MD)
2.875	4760							

## 25. Producing Intervals

Formation	Top	Bottom	Perforation Interval	Size	No. Holes	Perf. Status
A) YESO-WEST	5899	13164	5899 TO 13164			PRODUCING
B)						
C)						
D)						

## 26. Perforation Record

## 27. Acid, Fracture, Treatment, Cement Squeeze, Etc.

Depth Interval	Amount and Type of Material
5899 TO 13164	ACIDIZE W/15% HCL, FRAC W/11045700# PROPPANT

## 28. Production - Interval A

Date First Produced	Test Date	Hours Tested	Test Production	Oil BBL	Gas MCF	Water BBL	Oil Gravity Corr. API	Gas Gravity	Production Method
06/06/2019	06/08/2019	24	→	64.0	45.0	1900.0			STRIP PUMP SURFACE
Choke Size	Tbg. Press. Flwg. SI	Csg. Press.	24 Hr. Rate	Oil BBL	Gas MCF	Water BBL	Gas:Oil Ratio	Well Status	
			→	64	45	1900	703	POW	

## 28a. Production - Interval B

Date First Produced	Test Date	Hours Tested	Test Production	Oil BBL	Gas MCF	Water BBL	Oil Gravity Corr. API	Gas Gravity	Production Method
			→						
Choke Size	Tbg. Press. Flwg. SI	Csg. Press.	24 Hr. Rate	Oil BBL	Gas MCF	Water BBL	Gas:Oil Ratio	Well Status	
			→						

(See Instructions and spaces for additional data on reverse side)

ELECTRONIC SUBMISSION #470667 VERIFIED BY THE BLM WELL INFORMATION SYSTEM

\*\* BLM REVISED \*\* BLM REVISED \*\* BLM REVISED \*\* BLM REVISED \*\* BLM REVISED \*\*

Reclamation Due - Dec 8, 2019

ACCEPTED FOR RECORD

SEP 16 2019

BUREAU OF LAND MANAGEMENT  
CARLSBAD FIELD OFFICE

## 28b. Production - Interval C

Date First Produced	Test Date	Hours Tested	Test Production	Oil BBL	Gas MCF	Water BBL	Oil Gravity Corr. API	Gas Gravity	Production Method
			→						
Choke Size	Tbg. Press. Flwg. SI	Csg. Press.	24 Hr. Rate	Oil BBL	Gas MCF	Water BBL	Gas:Oil Ratio	Well Status	
			→						

## 28c. Production - Interval D

Date First Produced	Test Date	Hours Tested	Test Production	Oil BBL	Gas MCF	Water BBL	Oil Gravity Corr. API	Gas Gravity	Production Method
			→						
Choke Size	Tbg. Press. Flwg. SI	Csg. Press.	24 Hr. Rate	Oil BBL	Gas MCF	Water BBL	Gas:Oil Ratio	Well Status	
			→						

29. Disposition of Gas(Sold, used for fuel, vented, etc.)  
SOLD

## 30. Summary of Porous Zones (Include Aquifers):

Show all important zones of porosity and contents thereof: Cored intervals and all drill-stem tests, including depth interval tested, cushion used, time tool open, flowing and shut-in pressures and recoveries.

## 31. Formation (Log) Markers

Formation	Top	Bottom	Descriptions, Contents, etc.	Name	Top Meas. Depth
RUSTLER	860	1044	ANHYDRITIC DOLOMITE	SALADO	1044
SALADO	1044	2070	HALITE (SALT) AND ANHYDRITE	TANSILL	2070
TANSILL	2070	2187	ANHYDRITE/DOLOMITE	YATES	2187
YATES	2187	2523	ANHYDRITE/DOLOMITE W/INTERBEDD	SEVEN RIVERS	2523
SEVEN RIVERS	2523	3156	ANHYDRITE/DOLOMITE W/HALITE (S	QUEEN	3156
QUEEN	3156	3558	SANDSTONE AND ANHYDRITIC DOLOM	GRAYBURG	3558
GRAYBURG	3558	3886	ANHYDRITIC DOLOMITE	SAN ANDRES	3886
SAN ANDRES	3886	5420	ANHYDRITIC DOLOMITE		

## 32. Additional remarks (include plugging procedure):

GLORIETA TOP 5420' BOTTOM 5554' SANDSTONE  
PADDOCK TOP 5554' DOLOMITE/LIMESTONE

## 33. Circle enclosed attachments:

- |   |                    |               |                       |
|---|--------------------|---------------|-----------------------|
| 1. Electrical/Mechanical Logs (1 full set req'd.)     | 2. Geologic Report | 3. DST Report | 4. Directional Survey |
| 5. Sundry Notice for plugging and cement verification | 6. Core Analysis   | 7 Other:      |                       |

## 34. I hereby certify that the foregoing and attached information is complete and correct as determined from all available records (see attached instructions):

Electronic Submission #470667 Verified by the BLM Well Information System.  
For CONOCOPHILLIPS COMPANY, sent to the Hobbs  
Committed to AFMSS for processing by DEBORAH HAM on 08/29/2019 (19DMH0200SE)

Name (please print) RHONDA ROGERSTitle REGULATORY COORDINATOR

Signature \_\_\_\_\_ (Electronic Submission)

Date 06/26/2019

Title 18 U.S.C. Section 1001 and Title 43 U.S.C. Section 1212, make it a crime for any person knowingly and willfully to make to any department or agency of the United States any false, fictitious or fraudulent statements or representations as to any matter within its jurisdiction.

**\*\* REVISED \*\* REVISED \*\* REVISED \*\* REVISED \*\* REVISED \*\* REVISED \*\* REVISED \*\* REVISED \*\***

District I  
1625 N. French Dr., Hobbs, NM 88240  
Phone: (575) 393-6161 Fax: (575) 393-0720  
District II  
811 S. First St., Artesia, NM 88210  
Phone: (575) 748-1283 Fax: (575) 748-9720  
District III  
1000 Rio Brazos Road, Aztec, NM 87410  
Phone: (505) 334-6178 Fax: (505) 334-6170  
District IV  
1220 S. St. Francis Dr., Santa Fe, NM 87505  
Phone: (505) 476-3460 Fax: (505) 476-3462

State of New Mexico  
Energy, Minerals & Natural Resources Department  
**OIL CONSERVATION DIVISION**  
1220 South St. Francis Dr.  
Santa Fe, NM 87505

Form C-102  
Revised August 1, 2011  
Submit one copy to appropriate  
District Office  
☐ AMENDED REPORT

**WELL LOCATION AND ACREAGE DEDICATION PLAT**

<sup>1</sup> API Number <b>30-025-44589</b>	<sup>2</sup> Pool Code <b>44500</b>	<sup>3</sup> Pool Name <b>Majamar, Yeso West</b>
<sup>4</sup> Property Code <b>320830</b>	<sup>5</sup> Property Name <b>PERIDOT 8 FEDERAL</b>	<sup>6</sup> Well Number <b>3H</b>
<sup>7</sup> OGRID No. <b>217817</b>	<sup>8</sup> Operator Name <b>ConocoPhillips Company</b>	<sup>9</sup> Elevation <b>4047.4'</b>

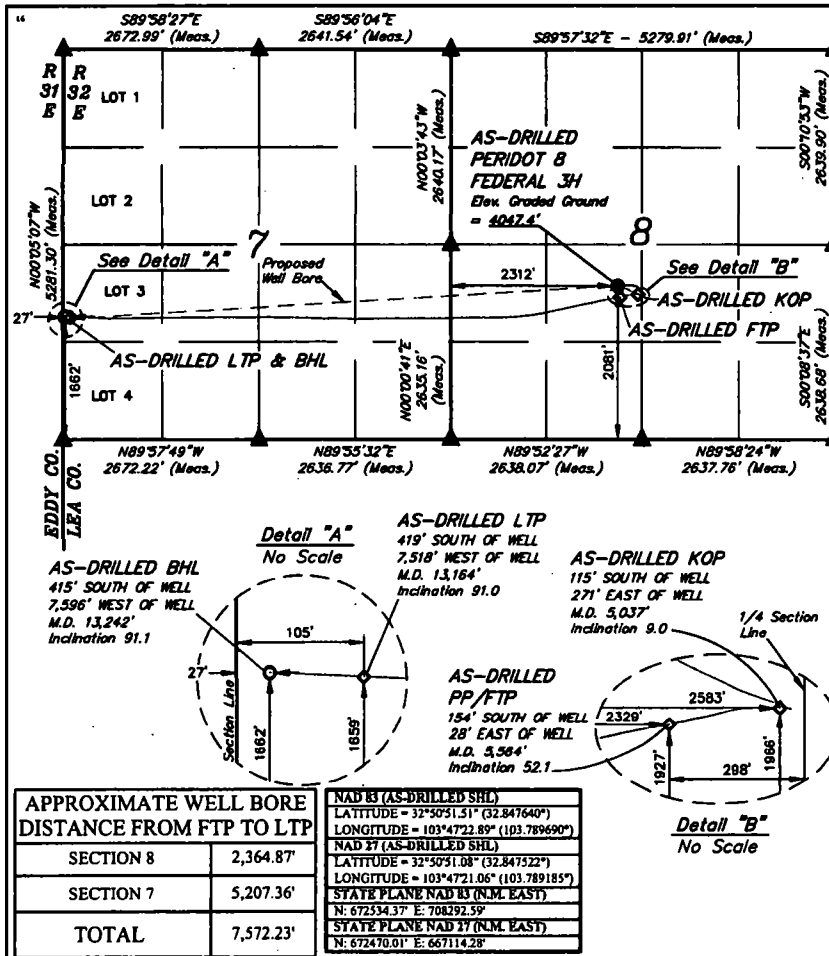
**" Surface Location**

UL or lot no.	Section	Township	Range	Lot Idn	Feet from the	North/South line	Feet from the	East/West line	County
K	8	17S	32E		2081	SOUTH	2312	WEST	LEA

**" Bottom Hole Location If Different From Surface**

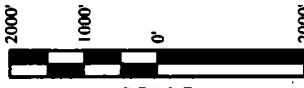
UL or lot no.	Section	Township	Range	Lot Idn	Feet from the	North/South line	Feet from the	East/West line	County
3	7	17S	32E		1662	SOUTH	27	WEST	LEA
<sup>13</sup> Dedicated Acres 240.93	<sup>14</sup> Joint or Infill	<sup>15</sup> Consolidation Code	<sup>16</sup> Order No.						

No allowable will be assigned to this completion until all interests have been consolidated or a non-standard unit has been approved by the division.



APPROXIMATE WELL BORE DISTANCE FROM FTP TO LTP	
SECTION 8	2,364.87'
SECTION 7	5,207.36'
<b>TOTAL</b>	<b>7,572.23'</b>

NOTE:  
• Distances referenced on plat to section lines are perpendicular.  
• Basis of Bearing is a Transverse Mercator Projection with a Central Meridian of W103°53'00"



SCALE  
DRAWN BY: C.D. 08-23-18  
REV: 2 C.M.T. 03-28-19 (FTP UPDATE)  
● = AS-DRILLED SHL  
◆ = AS-DRILLED PP/FTP/LTP  
○ = AS-DRILLED BHL  
▲ = SECTION CORNER LOCATED

<b>NAD 83 (AS-DRILLED SHL)</b> LATITUDE = 32°50'51.51" (32.847640°) LONGITUDE = 103°47'22.89" (103.789690°)	<b>NAD 83 (AS-DRILLED KOP)</b> LATITUDE = 32°50'51.51" (32.847640°) LONGITUDE = 103°47'22.89" (103.789690°)
<b>NAD 83 (AS-DRILLED PP/FTP)</b> LATITUDE = 32°50'51.51" (32.847640°) LONGITUDE = 103°47'22.89" (103.789690°)	<b>NAD 83 (AS-DRILLED BHL)</b> LATITUDE = 32°50'51.51" (32.847640°) LONGITUDE = 103°47'22.89" (103.789690°)
<b>NAD 83 (AS-DRILLED LTP)</b> LATITUDE = 32°50'51.51" (32.847640°) LONGITUDE = 103°47'22.89" (103.789690°)	<b>NAD 83 (AS-DRILLED BHL)</b> LATITUDE = 32°50'51.51" (32.847640°) LONGITUDE = 103°47'22.89" (103.789690°)
<b>STATE PLANE NAD 83 (N.M. EAST)</b> N: 672334.37' E: 708392.59'	<b>STATE PLANE NAD 83 (N.M. EAST)</b> N: 672334.37' E: 708392.59'
<b>STATE PLANE NAD 27 (N.M. EAST)</b> N: 672470.01' E: 667114.28'	<b>STATE PLANE NAD 27 (N.M. EAST)</b> N: 672470.01' E: 667114.28'
<b>STATE PLANE NAD 83 (N.M. EAST)</b> N: 672335.89' E: 667386.11'	<b>STATE PLANE NAD 83 (N.M. EAST)</b> N: 672335.89' E: 667386.11'
<b>STATE PLANE NAD 27 (N.M. EAST)</b> N: 672019.40' E: 659399.20'	<b>STATE PLANE NAD 27 (N.M. EAST)</b> N: 672019.40' E: 659399.20'

**" OPERATOR CERTIFICATION**

I hereby certify that the information contained herein is true and complete to the best of my knowledge and belief, and that this organization either owns a working interest or an undivided mineral interest in the land including the proposed bottom hole location or has a right to drill this well at this location pursuant to a contract with an owner of such a mineral or working interest, or to a voluntary pooling agreement or a compulsory pooling order heretofore entered by the division.

Susan B. Maunder 3/31/19  
Signature Date  
Susan B. Maunder  
Printed Name  
Susan.B.Maunder@conocophillips.com  
E-mail Address

**" SURVEYOR CERTIFICATION**

I hereby certify that the well location shown on this plat was plotted from field notes of actual surveys made by me or under my supervision, and that the same is true and correct to the best of my belief.

August 22, 2018

Date of Survey  
Signature and Seal of Professional Surveyor:



Certificate Number: