

District I
1625 N. French Dr., Hobbs, NM 88240
Phone: (575) 393-6161 Fax: (575) 393-0720
District II
811 S. First St., Artesia, NM 88210
Phone: (575) 748-1283 Fax: (575) 748-9720
District III
1000 Rio Brazos Road, Aztec, NM 87410
Phone: (505) 334-6178 Fax: (505) 334-6170
District IV
1220 S. St. Francis Dr., Santa Fe, NM 87505
Phone: (505) 476-3460 Fax: (505) 476-3462

State of New Mexico
Energy, Minerals & Natural Resources
Department
OIL CONSERVATION DIVISION
1220 South St. Francis Dr.
Santa Fe, NM 87505

HOBBS OCD

SEP 24 2019

RECEIVED

FORM C-102

Revised August 1, 2011

Submit one copy to appropriate

District Office

☐ AMENDED REPORT

WELL LOCATION AND ACREAGE DEDICATION PLAT

¹ API Number 30-025-45759	² Pool Code 2200	³ Pool Name Antelope Ridge; Bone Spring
⁴ Property Code 321386	⁵ Property Name JEFF HART STATE COM	
⁶ Well Number #124H	⁷ Elevation 3397'	
⁸ GRID No. 228937	⁹ Operator Name MATADOR PRODUCTION COMPANY	

¹⁰Surface Location

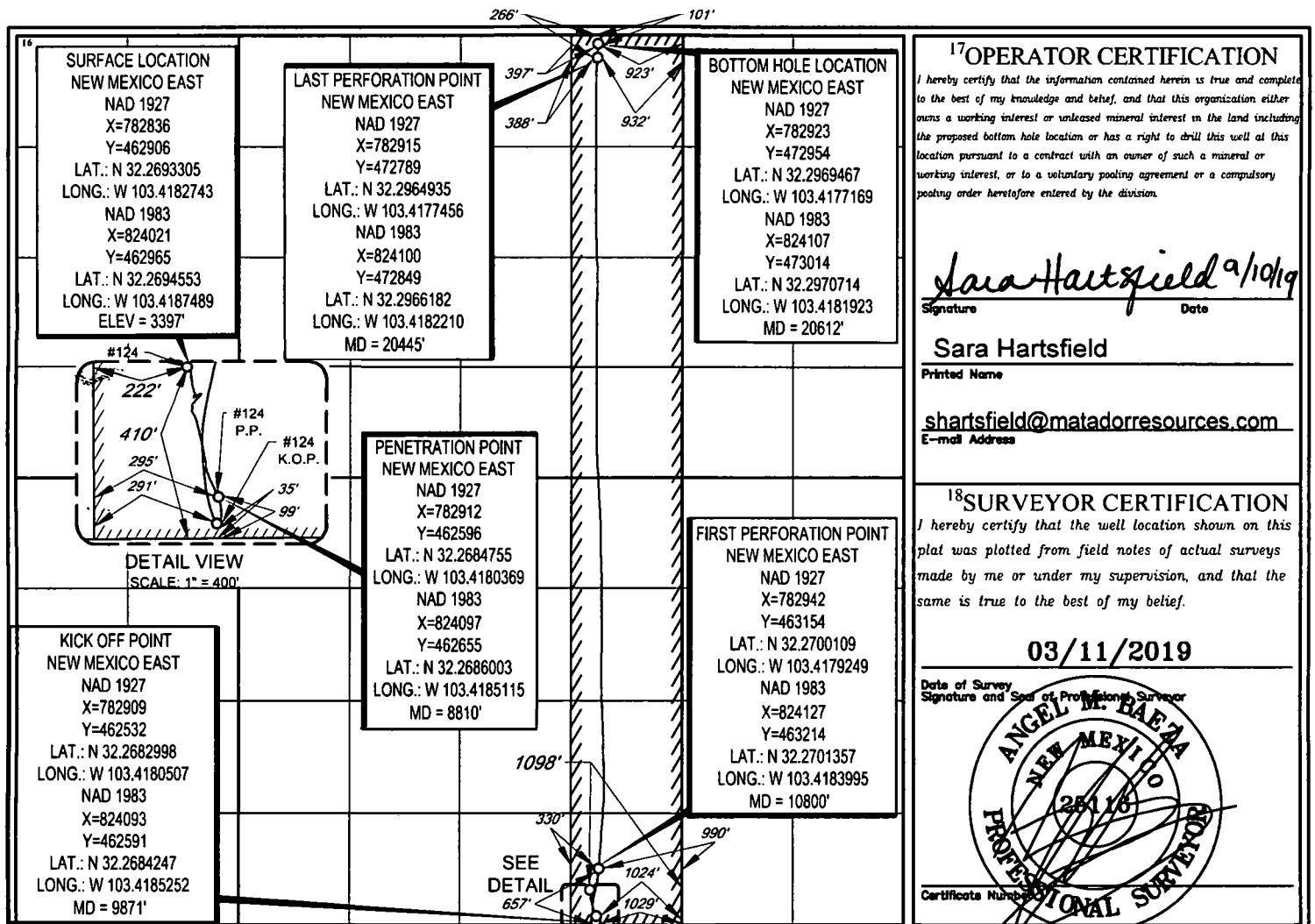
UL or lot no.	Section	Township	Range	Lot Idn	Feet from the	North/South line	Feet from the	East/West line	County
P	25	23-S	34-E	-	410'	SOUTH	1098'	EAST	LEA

¹¹Bottom Hole Location If Different From Surface

UL or lot no.	Section	Township	Range	Lot Idn	Feet from the	North/South line	Feet from the	East/West line	County
A	24	23-S	34-E	-	101'	NORTH	923'	EAST	LEA

¹² Dedicated Acres 320	¹³ Joint or Infill	¹⁴ Consolidation Code	¹⁵ Order No.
---	-------------------------------	----------------------------------	-------------------------

No allowable will be assigned to this completion until all interests have been consolidated or a non-standard unit has been approved by the division.



LEA COUNTY, NEW MEXICO

SCALE: 1" = 1000'

0' 500' 1000'

FND. BRASS CAP.
U.S. G.L.O. SUR.
1913

14 13
23 24

FND. BRASS CAP.
U.S. G.L.O. SUR.
1913

13
24

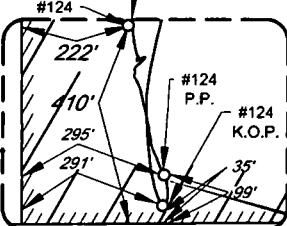
FND. BRASS CAP.
U.S. G.L.O. SUR.
1913

13 18
24 19

**SURFACE LOCATION
NEW MEXICO EAST**
NAD 1927
X=782836
Y=462906
LAT.: N 32.2693305
LONG.: W 103.4182743
NAD 1983
X=824021
Y=462965
LAT.: N 32.2694553
LONG.: W 103.4187489
ELEV = 3397'

**LAST PERFORATION POINT
NEW MEXICO EAST**
NAD 1927
X=782915
Y=472789
LAT.: N 32.2964935
LONG.: W 103.4177456
NAD 1983
X=824100
Y=472849
LAT.: N 32.2966182
LONG.: W 103.4182210
MD = 20445'

**BOTTOM HOLE LOCATION
NEW MEXICO EAST**
NAD 1927
X=782923
Y=472954
LAT.: N 32.2969467
LONG.: W 103.4177169
NAD 1983
X=824107
Y=473014
LAT.: N 32.2970714
LONG.: W 103.4181923
MD = 20612'



DETAIL VIEW
SCALE: 1" = 400'

**KICK OFF POINT
NEW MEXICO EAST**
NAD 1927
X=782909
Y=462532
LAT.: N 32.2682998
LONG.: W 103.4180507
NAD 1983
X=824093
Y=462591
LAT.: N 32.2684247
LONG.: W 103.4185252
MD = 9871'

**PENETRATION POINT
NEW MEXICO EAST**
NAD 1927
X=782912
Y=462596
LAT.: N 32.2684755
LONG.: W 103.4180369
NAD 1983
X=824097
Y=462655
LAT.: N 32.2686003
LONG.: W 103.4185115
MD = 8810'

**FIRST PERFORATION POINT
NEW MEXICO EAST**
NAD 1927
X=782942
Y=463154
LAT.: N 32.2700109
LONG.: W 103.4179249
NAD 1983
X=824127
Y=463214
LAT.: N 32.2701357
LONG.: W 103.4183995
MD = 10800'

FND. BRASS CAP.
U.S. G.L.O. SUR.
1913

26 25
35 36

FND. BRASS CAP.
U.S. G.L.O. SUR.
1913

25
36

FND. BRASS CAP.
U.S. G.L.O. SUR.
1913

25 30
36 31

LEASE NAME & WELL NO.: JEFF HART STATE COM #124H
SECTION 25 TWP 23-S RGE 34-E SURVEY N.M.P.M.
COUNTY LEA STATE NM ELEVATION 3397'
DESCRIPTION 410' FSL & 1098' FWL



TOPOGRAPHIC
LOYALTY INNOVATION LEGACY

1400 EVERMAN PARKWAY, Ste. 146 • FT. WORTH, TEXAS 76140
TELEPHONE: (817) 744-7512 • FAX (817) 744-7554
2903 NORTH BIG SPRING • MIDLAND, TEXAS 79705
TELEPHONE: (432) 682-1653 OR (800) 767-1653 • FAX (432) 682-1743
WWW.TOPOGRAPHIC.COM



Angel M. Baeza, P.S. No. 25116
AUGUST 28, 2019

JEFF HART STATE COM
#124H
AS-COMPLETED

REVISION:

NOTES:

1. ORIGINAL DOCUMENT SIZE: 8.5" X 11"
2. ALL BEARINGS, DISTANCES, AND COORDINATE VALUES CONTAINED HEREIN ARE GRID BASED UPON THE NEW MEXICO COORDINATE SYSTEM OF 1983, EAST ZONE, U.S. SURVEY FEET.
3. THIS WELL LOCATION SHOWN HEREON HAS BEEN SURVEYED ON THE GROUND UNDER MY SUPERVISION AND PREPARED ACCORDING TO THE EVIDENCE FOUND AT THE TIME OF SURVEY, AND DATA PROVIDED BY MATADOR PRODUCTION COMPANY. THIS CERTIFICATION IS MADE AND LIMITED TO THOSE PERSONS OR ENTITIES SHOWN ON THE FACE OF THIS PLAT AND IS NON-TRANSFERABLE. THIS SURVEY IS CERTIFIED FOR THIS TRANSACTION ONLY.

DATE: 08/28/19

FILE: AD_JEFF_HART_STATE_COM_124H

DRAWN BY: JDR

SHEET: 1 OF 1