

District I
1625 N. French Dr., Hobbs, NM 88240
Phone: (575) 393-6161 Fax: (575) 393-0720
District II
811 S. First St., Artesia, NM 88210
Phone: (575) 748-1283 Fax: (575) 748-9720
District III
1000 Rio Brazos Road, Aztec, NM 87410
Phone: (505) 334-6178 Fax: (505) 334-6170
District IV
1220 S. St. Francis Dr., Santa Fe, NM 87505
Phone: (505) 476-3460 Fax: (505) 476-3462

State of New Mexico
Energy, Minerals & Natural Resources
Department
OIL CONSERVATION DIVISION
1220 South St. Francis
Santa Fe, NM 87505

FORM C-102

Revised August 1, 2011

Submit one copy to appropriate

District Office

☐ AMENDED REPORT

WELL LOCATION AND ACREAGE DEDICATION PLAT

¹ API Number 30-025- 45673	² Pool Code 97984 97990	³ Pool Name WC-025 @-08-52532350; LWR BS
⁴ Property Code 321651	⁵ Property Name SAVAGE 2 STATE COM	⁶ Well Number 504H
⁷ OGRID No. 7377	⁸ Operator Name EOG RESOURCES, INC.	⁹ Elevation 3520'

¹⁰Surface Location

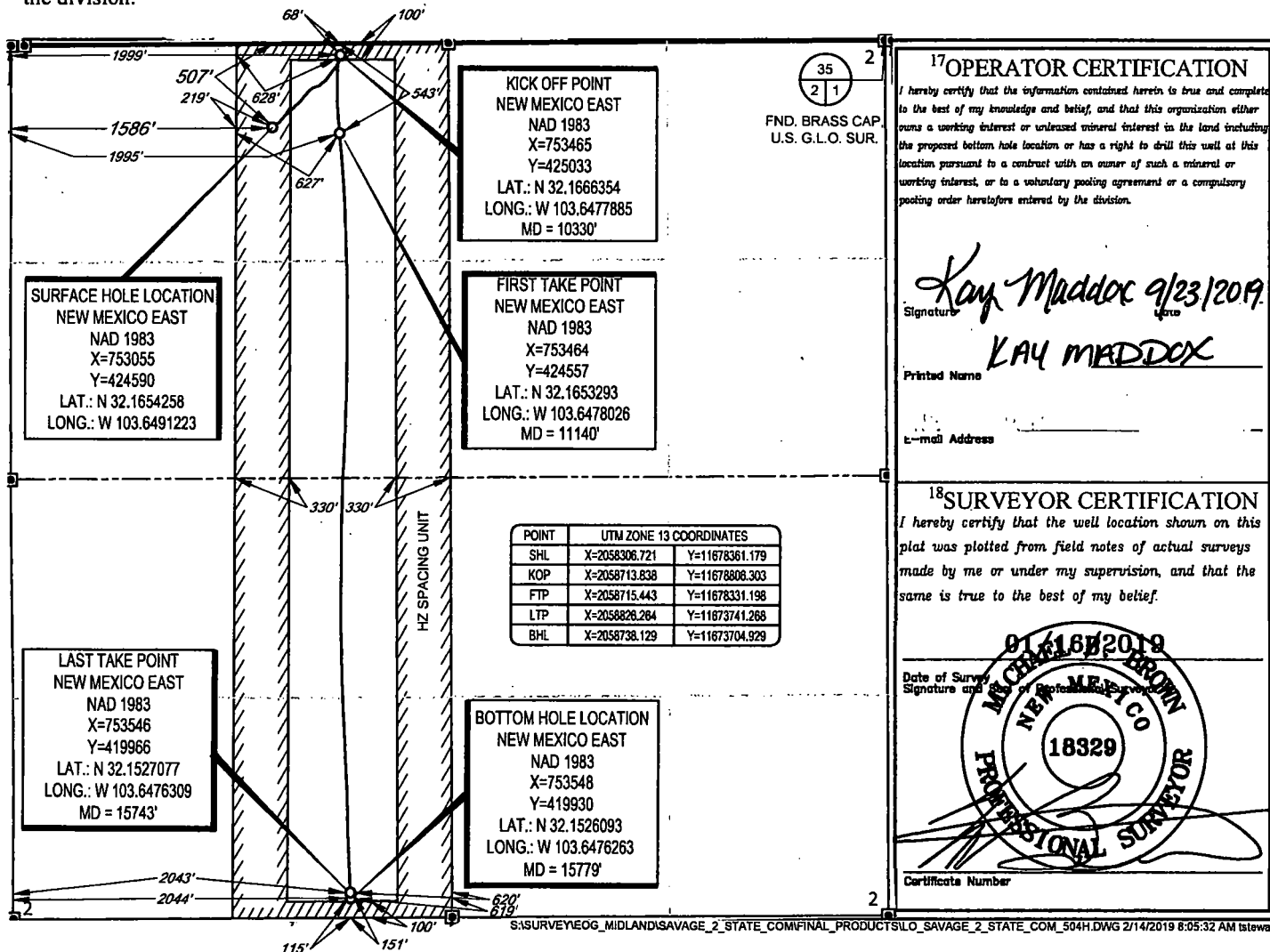
UL or lot no. C	Section 2	Township 25-S	Range 32-E	Lot Idn -	Feet from the 507'	North/South line NORTH	Feet from the 1586'	East/West line WEST	County LEA
---------------------------	---------------------	-------------------------	----------------------	---------------------	------------------------------	----------------------------------	-------------------------------	-------------------------------	----------------------

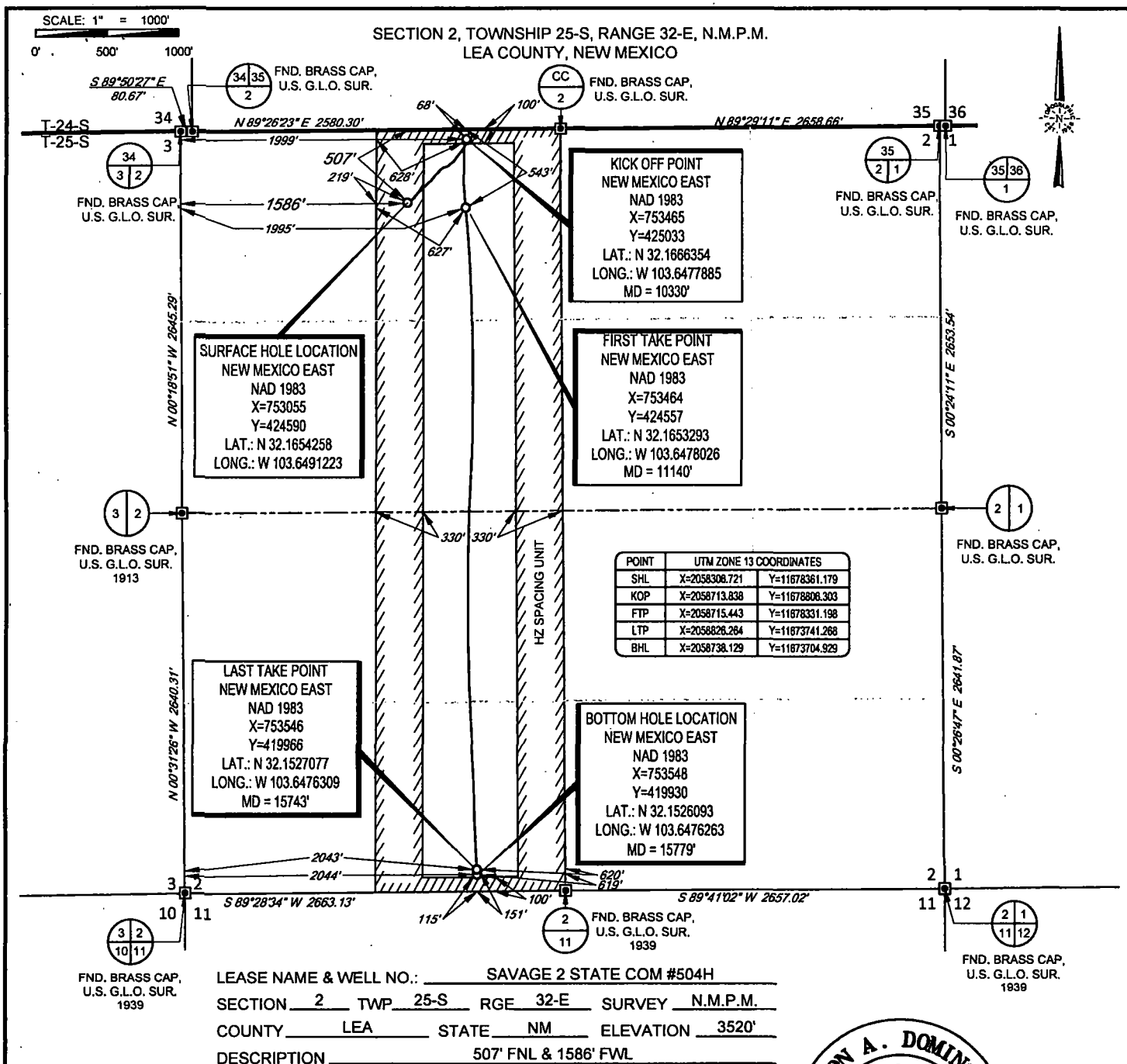
¹¹Bottom Hole Location If Different From Surface

UL or lot no. N	Section 2	Township 25-S	Range 32-E	Lot Idn -	Feet from the 115'	North/South line SOUTH	Feet from the 2044'	East/West line WEST	County LEA
---------------------------	---------------------	-------------------------	----------------------	---------------------	------------------------------	----------------------------------	-------------------------------	-------------------------------	----------------------

¹² Dedicated Acres 160.19	¹³ Joint or Infill	¹⁴ Consolidation Code	¹⁵ Order No.
--	-------------------------------	----------------------------------	-------------------------

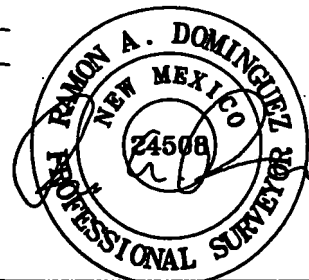
No allowable will be assigned to this completion until all interests have been consolidated or a non-standard unit has been approved by the division.





TOPOGRAPHIC
LOYALTY INNOVATION LEGACY

1400 EVERMAN PARKWAY, Ste. 146 • FT. WORTH, TEXAS 76140
TELEPHONE: (817) 744-7512 • FAX (817) 744-7554
2803 NORTH BIG SPRING • MIDLAND, TEXAS 79705
TELEPHONE: (432) 682-1653 OR (800) 787-1653 • FAX (432) 682-1743
WWW.TOPOGRAPHIC.COM



Ramon A. Dominguez, P.S. No. 24508
AUGUST 19, 2019

eg resources, Inc.

SAVAGE 2 STATE COM #504H AS-DRILLED	REVISION:		NOTES: 1. ORIGINAL DOCUMENT SIZE: 8.5" X 11" 2. ALL BEARINGS, DISTANCES, AND COORDINATE VALUES CONTAINED HEREIN ARE GRID BASED UPON THE NEW MEXICO COORDINATE SYSTEM OF 1983, EAST ZONE, U.S. SURVEY FEET. 3. THIS WELL LOCATION SHOWN HEREON HAS BEEN SURVEYED ON THE GROUND UNDER MY SUPERVISION AND PREPARED ACCORDING TO THE EVIDENCE FOUND AT THE TIME OF SURVEY, AND DATA PROVIDED BY EOG RESOURCES, INC. THIS CERTIFICATION IS MADE AND LIMITED TO THOSE PERSONS OR ENTITIES SHOWN ON THE FACE OF THIS PLAT AND IS NON-TRANSFERABLE. THIS SURVEY IS CERTIFIED FOR THIS TRANSACTION ONLY.
DATE: 08/19/2019			
FILE:AD_SAVAGE_2_STATE_COM_504H			
DRAWN BY: A.V.F.			
SHEET: 1 OF 1			