

DISTRICT I  
1625 N. FRENCH DR., HOBBES, NM 88240  
Phone: (505) 893-6181 Fax: (505) 893-0720

DISTRICT II  
811 S. FIRST ST., ARTESIA, NM 88210  
Phone: (505) 746-1253 Fax: (505) 746-0720

DISTRICT III  
1000 RIO BRAZOS RD., AZTEC, NM 87410  
Phone: (505) 334-6178 Fax: (505) 334-6170

DISTRICT IV  
1820 S. ST. FRANCIS DR., SANTA FE, NM 87505  
Phone: (505) 476-3460 Fax: (505) 476-3468

State of New Mexico  
Energy, Minerals & Natural Resources Department  
**OIL CONSERVATION DIVISION**  
1220 SOUTH ST. FRANCIS DR.  
Santa Fe, New Mexico 87505

**HOBBES OCD**

Form C-102  
Revised August 1, 2011  
Submit one copy to appropriate  
District Office

OCT 08 2019

☐ AMENDED REPORT

**WELL LOCATION AND ACREAGE DEDICATION RECEIVED**

API Number <b>30-025-45451</b>	Pool Code <b>96674</b>	Pool Name <b>TRIPLE X; BONE SPRING, WEST</b>
Property Code	Property Name <b>BELL LAKE 19-18 STATE COM</b>	Well Number <b>7H</b>
GRID No. <b>6137</b>	Operator Name <b>DEVON ENERGY PRODUCTION COMPANY, L.P.</b>	Elevation <b>3540.2'</b>

**Surface Location**

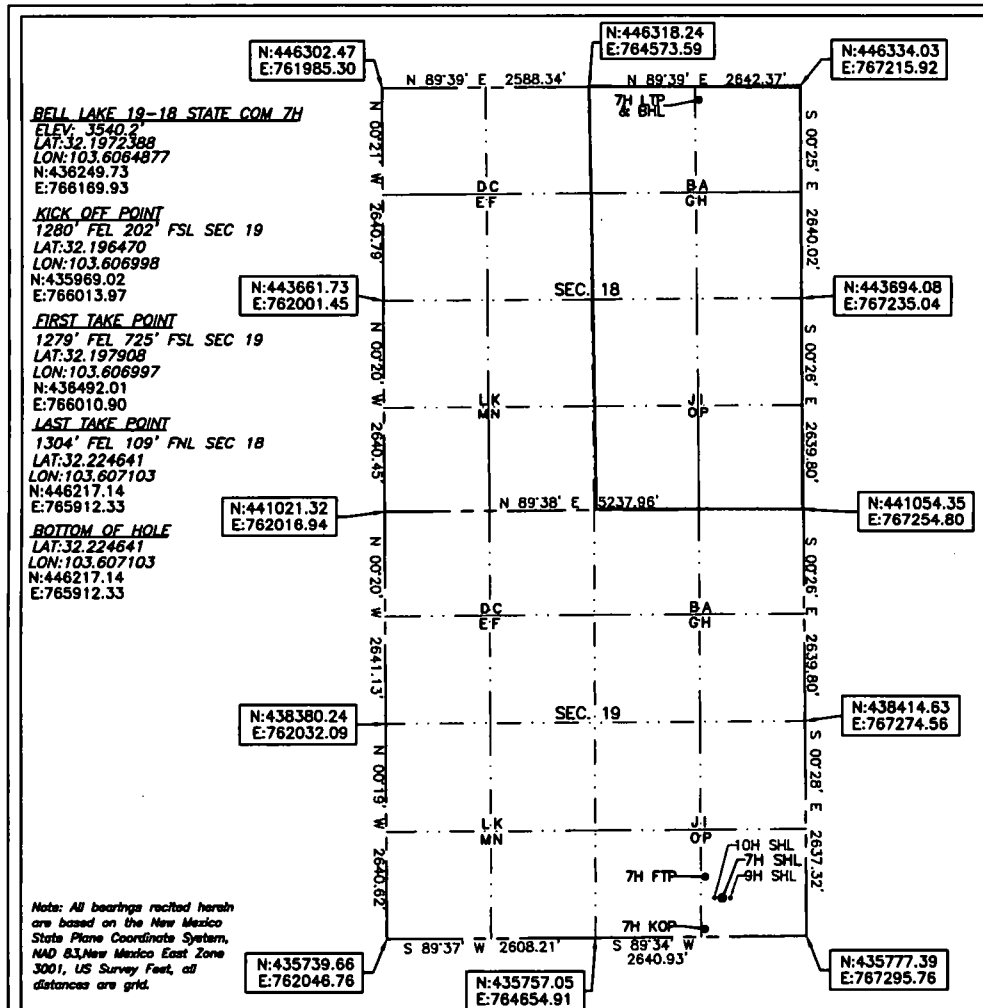
UL or lot No.	Section	Township	Range	Lot Idn	Feet from the	North/South line	Feet from the	East/West line	County
P	19	24-S	33-E		481	SOUTH	1122	EAST	LEA

**Bottom Hole Location If Different From Surface**

UL or lot No.	Section	Township	Range	Lot Idn	Feet from the	North/South line	Feet from the	East/West line	County
A	18	24-S	33-E		109	NORTH	1304	EAST	LEA

Dedicated Acres <b>320</b>	Joint or Infill	Consolidation Code	Order No.
-------------------------------	-----------------	--------------------	-----------

**NO ALLOWABLE WILL BE ASSIGNED TO THIS COMPLETION UNTIL ALL INTERESTS HAVE BEEN CONSOLIDATED  
OR A NON-STANDARD UNIT HAS BEEN APPROVED BY THE DIVISION**



**OPERATOR CERTIFICATION**

I hereby certify that the information herein is true and complete to the best of my knowledge and belief, and that this organization either owns a working interest or unleased mineral interest in the land including the proposed bottom hole location or has a right to drill this well at this location pursuant to a contract with an owner of such mineral or working interest, or to a voluntary pooling agreement or a compulsory pooling order heretofore entered by the division.

Signature Rebecca Deal Date 9/19/2019  
Printed Name Rebecca Deal, Regulatory Analyst  
E-mail Address rebecca.deal@dmv.com

**SURVEYOR CERTIFICATION**

I hereby certify that the well location shown on this plat was plotted from field notes of actual surveys made by me or under my supervision, and that the same is true and correct to the best of my belief.

03/2019

Date of Survey

Signature & Seal of Professional Surveyor



09/12/19

Certificate No. 22404 B.L. LAMAN  
DRAWN BY: CM