

District I
1625 N. French Dr., Hobbs, NM 88240
Phone: (575) 393-6161 Fax: (575) 393-0720
District II
811 S. First St., Artesia, NM 88210
Phone: (575) 748-1283 Fax: (575) 748-9720
District III
1000 Rio Brazos Road, Aztec, NM 87410
Phone: (505) 334-6178 Fax: (505) 334-6170
District IV
1220 S. St. Francis Dr., Santa Fe, NM 87505
Phone: (505) 476-3460 Fax: (505) 476-3462

State of New Mexico
Energy, Minerals & Natural Resources Department
OIL CONSERVATION DIVISION
1220 South St. Francis Dr.
Santa Fe, NM 87505

Form C-102
Revised August 1, 2011
Submit one copy to appropriate
District Office

☐ AMENDED REPORT

RECEIVED

WELL LOCATION AND ACREAGE DEDICATION PLAT

1 API Number 30-025-46063	2 Pool Code 28434	3 Pool Name Grana Ridge: Bone Spring, North
4 Property Code 320471	5 Property Name ASADERO 3 STATE COM	6 Well Number 50211
7 OGRID No. 372165	8 Operator Name CENTENNIAL RESOURCE PRODUCTION, LLC	9 Elevation 3692.3'

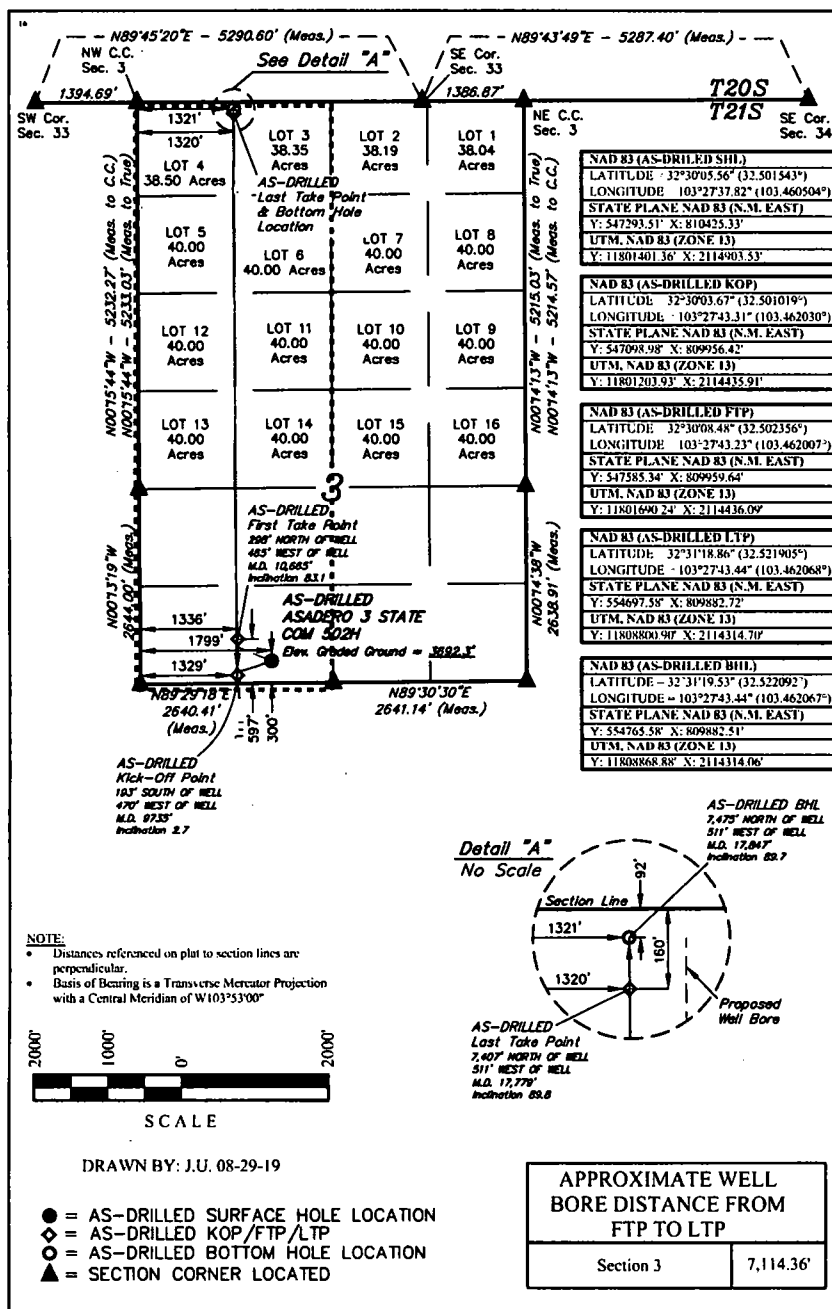
"Surface Location

UL or lot no.	Section	Township	Range	Lot Idn	Feet from the	North/South line	Feet from the	East/West line	County
N	3	21S	34E		200	SOUTH	1800	WEST	LEA

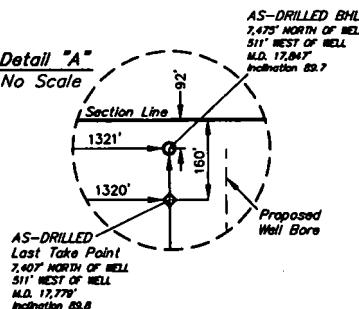
"Bottom Hole Location If Different From Surface

UL or lot no.	Section	Township	Range	Lot Idn	Feet from the	North/South line	Feet from the	East/West line	County
3	3	21S	34E		92	NORTH	1321	WEST	LEA
12 Dedicated Acres 476.85	13 Joint or Infill	14 Consolidation Code	15 Order No.						

No allowable will be assigned to this completion until all interests have been consolidated or a non-standard unit has been approved by the division.



Detail "A"
No Scale



"OPERATOR
CERTIFICATION

I hereby certify that the information contained herein is true and complete to the best of my knowledge and belief, and that this organization either owns a working interest or unleased mineral interest in the land including the proposed bottom hole location or has a right to drill this well at this location pursuant to a contract with an owner of such a mineral or working interest, or to a voluntary pooling agreement or a compulsory pooling order heretofore entered by the division.

Signature **K. Schlichting** 10/2/19
Date

Printed Name **Kanicia Schlichting**

kanicia.schlichting@cdevinc.com
E-mail Address

"SURVEYOR
CERTIFICATION

I hereby certify that the well location shown on this plat was plotted from field notes of actual surveys made by me or under my supervision, and that the same is true and correct to the best of my belief.

May 23, 2019

Date of Survey
Signature and Seal of Professional Surveyor:



Certificate Number:

APPROXIMATE WELL
BORE DISTANCE FROM
FTP TO LTP

Section 3 7,114.36'