

DISTRICT I
1035 N. FRANKLIN DR., HOBBBS, NM 88240
Phone: (505) 832-6161 Fax: (505) 832-0782

DISTRICT II
811 E. FIRST ST., ARTESIA, NM 88210
Phone: (505) 746-1253 Fax: (505) 746-0782

DISTRICT III
1000 RIO BRAZOS RD., AUSTIN, NM 87410
Phone: (505) 834-6176 Fax: (505) 834-6176

DISTRICT IV
1220 S. ST. FRANCIS DR., SANTA FE, NM 87505
Phone: (505) 476-3460 Fax: (505) 476-3462

State of New Mexico
Energy, Minerals & Natural Resources Department
OIL CONSERVATION DIVISION
1220 SOUTH ST. FRANCIS DR.
Santa Fe, New Mexico 87505

Form C-102
Revised August 1, 2011
Submit one copy to appropriate
District Office

☐ AMENDED REPORT

WELL LOCATION AND ACREAGE DEDICATION PLAT

API Number 30-025-45453	Pool Code 96674	Pool Name TRIPLE X;BONE SPRING
Property Code	Property Name BELL LAKE 19-18 STATE COM	Well Number 10H
OGRID No. 6137	Operator Name DEVON ENERGY PRODUCTION COMPANY, L.P.	Elevation 3539.9'

Surface Location

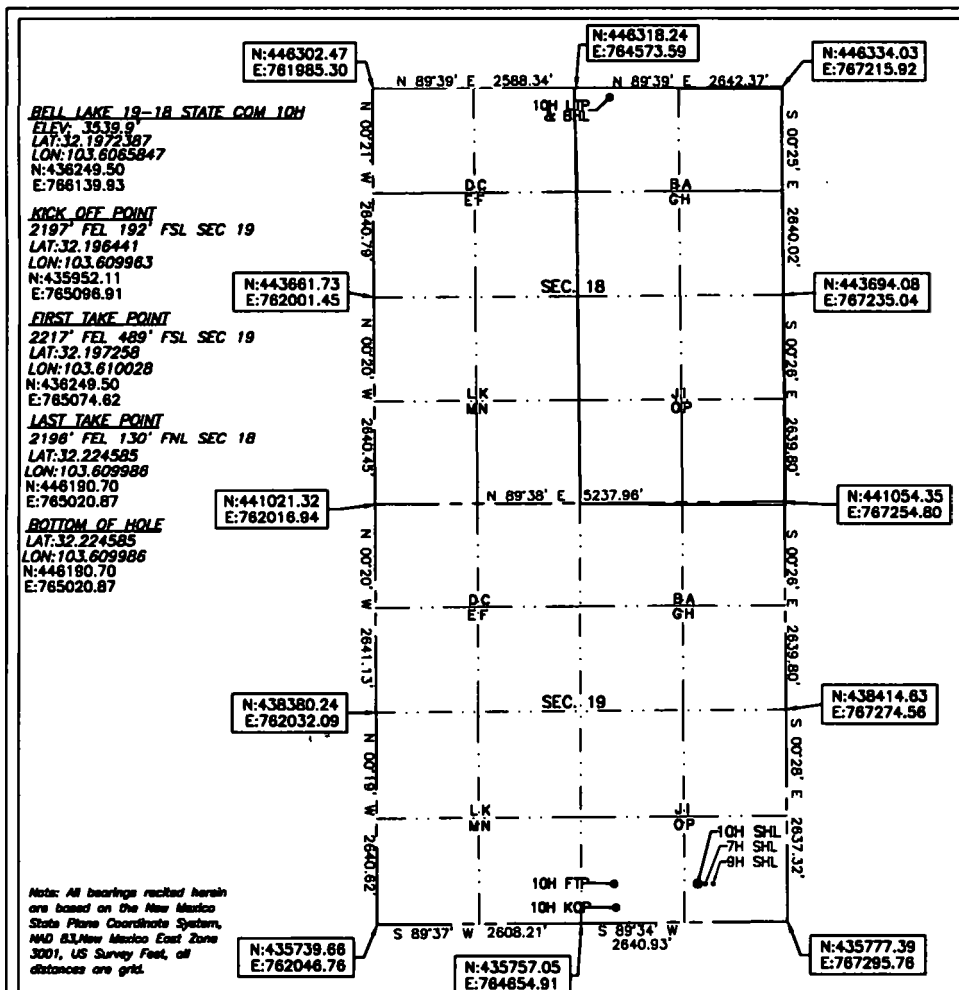
UL or lot No.	Section	Township	Range	Lot Idn	Feet from the	North/South line	Feet from the	East/West line	County
P	19	24-S	33-E		481	SOUTH	1152	EAST	LEA

Bottom Hole Location If Different From Surface

UL or lot No.	Section	Township	Range	Lot Idn	Feet from the	North/South line	Feet from the	East/West line	County
B	18	24-S	33-E		130	NORTH	2196	EAST	LEA

Dedicated Acres 320	Joint or Infill	Consolidation Code	Order No.
-------------------------------	-----------------	--------------------	-----------

NO ALLOWABLE WILL BE ASSIGNED TO THIS COMPLETION UNTIL ALL INTERESTS HAVE BEEN CONSOLIDATED
OR A NON-STANDARD UNIT HAS BEEN APPROVED BY THE DIVISION



OPERATOR CERTIFICATION

I hereby certify that the information herein is true and complete to the best of my knowledge and belief, and that this organization either owns a working interest or unleased mineral interest in the land including the proposed bottom hole location or has a right to drill this well at this location pursuant to a contract with an owner of such mineral or working interest, or to a voluntary pooling agreement or a compulsory pooling order heretofore entered by the division.

Rebecca Deal 9/23/2019
Signature Date

Rebecca Deal, Regulatory Analyst
Printed Name

rebecca.deal@dvn.com
E-mail Address

SURVEYOR CERTIFICATION

I hereby certify that the well location shown on this plat was plotted from field notes of actual surveys made by me or under my supervision, and that the same is true and correct to the best of my belief.

02/2019

Date of Survey

Signature & Seal of Professional Surveyor



09/12/19

Certificate No. 22404 B.L. LAMAN
DRAWN BY: CM