

District I  
1625 N. French Dr., Hobbs, NM 88240  
Phone: (575) 393-6161 Fax: (575) 393-0720  
District II  
811 S. First St., Artesia, NM 88210  
Phone: (575) 748-1283 Fax: (575) 748-9720  
District III  
1000 Rio Brazos Road, Aztec, NM 87410  
Phone: (505) 334-6178 Fax: (505) 334-6170  
District IV  
1220 S. St. Francis Dr., Santa Fe, NM 87505  
Phone: (505) 476-3460 Fax: (505) 476-3462

State of New Mexico **HOBBS OCD**  
Energy, Minerals & Natural Resources  
Department **OCT 17 2019**  
OIL CONSERVATION DIVISION  
1220 South St. Francis Dr. **RECEIVED**  
Santa Fe, NM 87505

FORM C-102  
Revised August 1, 2011  
Submit one copy to appropriate  
District Office

☐ AMENDED REPORT

**WELL LOCATION AND ACREAGE DEDICATION PLAT**

<sup>1</sup> API Number <b>30-025-45761</b>	<sup>2</sup> Pool Code <b>96682</b>	<sup>3</sup> Pool Name <b>Triste Draw; Bone Spring, East</b>
<sup>4</sup> Property Code <b>320644</b>	<sup>5</sup> Property Name <b>BANDIT 29 STATE COM</b>	<sup>6</sup> Well Number <b>601H</b>
<sup>7</sup> GRID No. <b>7377</b>	<sup>8</sup> Operator Name <b>EOG RESOURCES, INC.</b>	<sup>9</sup> Elevation <b>3530'</b>

**<sup>10</sup>Surface Location**

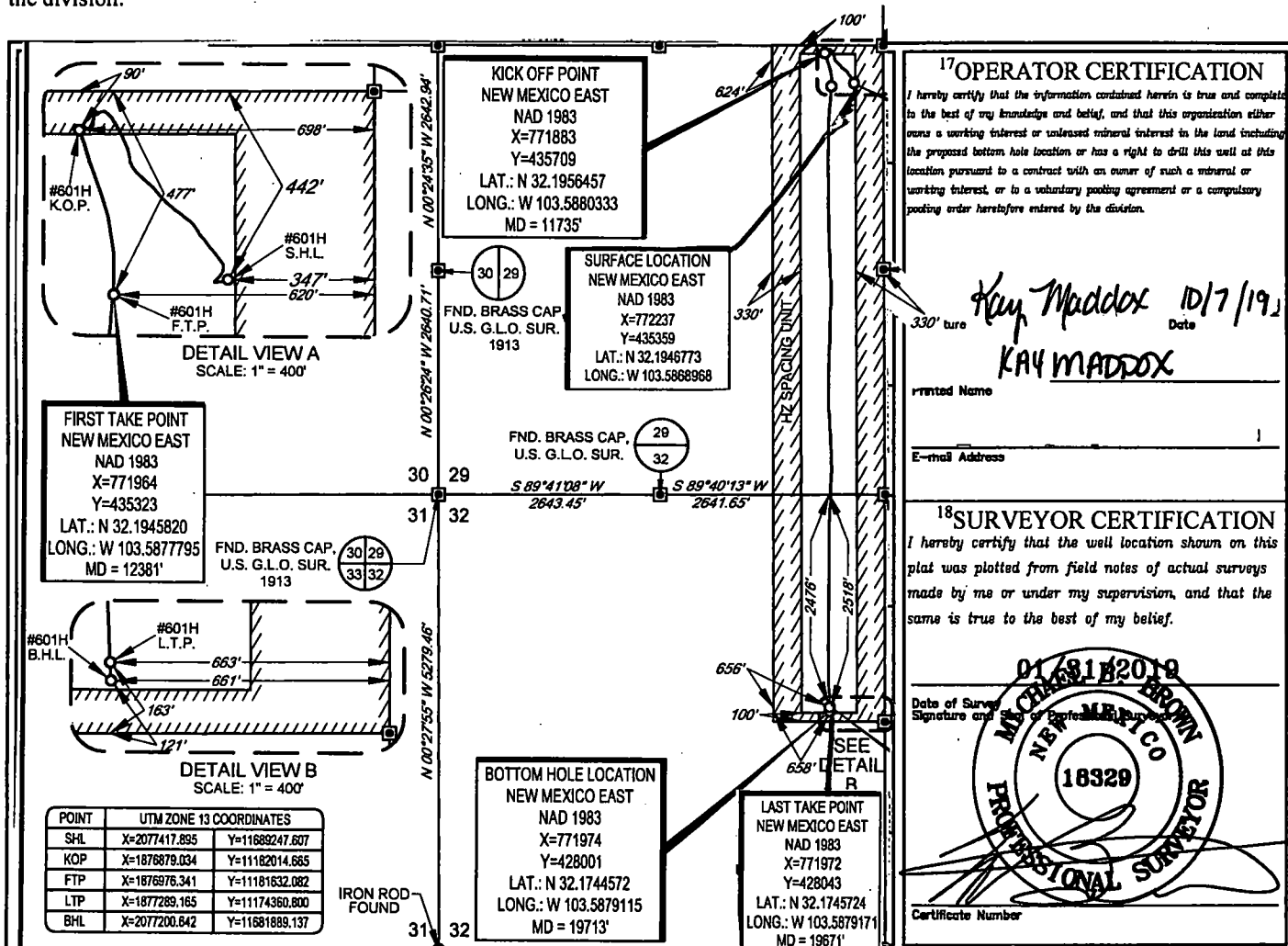
UL or lot no.	Section	Township	Range	Lot Idn	Feet from the	North/South line	Feet from the	East/West line	County
<b>A</b>	<b>29</b>	<b>24-S</b>	<b>33-E</b>	<b>-</b>	<b>442'</b>	<b>NORTH</b>	<b>347'</b>	<b>EAST</b>	<b>LEA</b>

**<sup>11</sup>Bottom Hole Location If Different From Surface**

UL or lot no.	Section	Township	Range	Lot Idn	Feet from the	North/South line	Feet from the	East/West line	County
<b>H</b>	<b>32</b>	<b>24-S</b>	<b>33-E</b>	<b>-</b>	<b>2518'</b>	<b>NORTH</b>	<b>661'</b>	<b>EAST</b>	<b>LEA</b>

<sup>12</sup> Dedicated Acres <b>240.00</b>	<sup>13</sup> Joint or Infill	<sup>14</sup> Consolidation Code	<sup>15</sup> Order No.
--	-------------------------------	----------------------------------	-------------------------

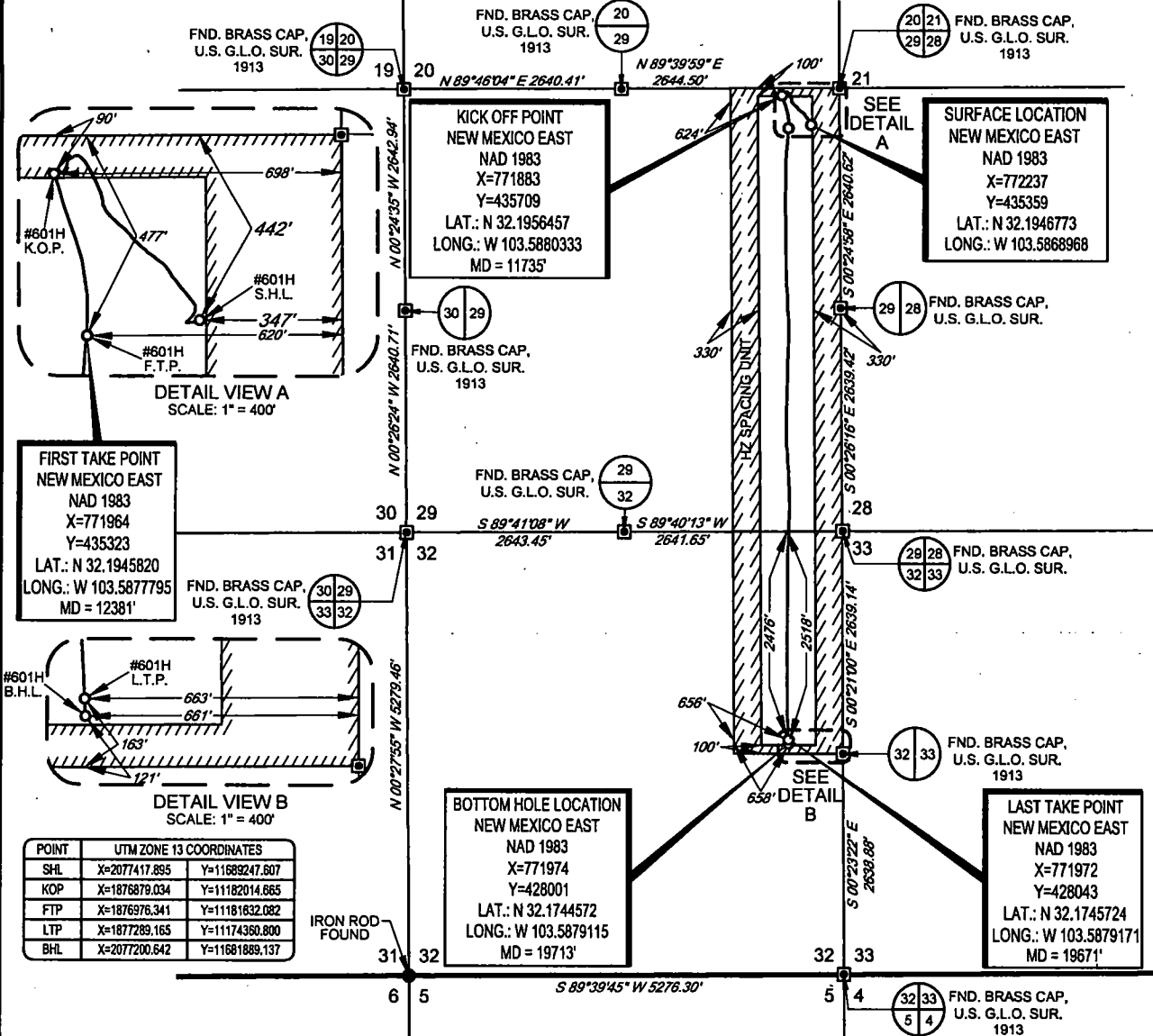
No allowable will be assigned to this completion until all interests have been consolidated or a non-standard unit has been approved by the division.



SCALE: 1" = 2000'

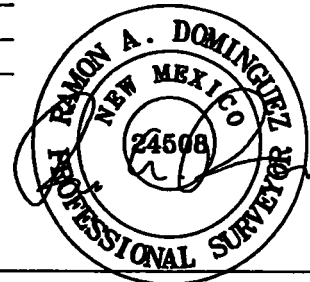
0' 1000' 2000'

SECTION 29, TOWNSHIP 24-S, RANGE 33-E, N.M.P.M.  
LEA COUNTY, NEW MEXICO



**TOPOGRAPHIC**  
LOYALTY INNOVATION LEGACY

1400 EVERMAN PARKWAY, Ste. 146 • FT. WORTH, TEXAS 76140  
TELEPHONE: (817) 744-7512 • FAX (817) 744-7554  
2903 NORTH BIG SPRING • MIDLAND, TEXAS 79705  
TELEPHONE: (432) 682-1653 OR (800) 767-1653 • FAX (432) 682-1743  
WWW.TOPOGRAPHIC.COM



Ramon A. Dominguez, P.S. No. 24508  
SEPTEMBER 24, 2019

**Geog resources, Inc.**

BANDIT 29 STATE COM #601H AS-COMPLETED	REVISION:		NOTES:
DATE: 09/24/2019			<p>1. ORIGINAL DOCUMENT SIZE: 8.5" X 11"</p> <p>2. ALL BEARINGS, DISTANCES, AND COORDINATE VALUES CONTAINED HEREIN ARE GRID BASED UPON THE NEW MEXICO COORDINATE SYSTEM OF 1983, EAST ZONE, U.S. SURVEY FEET.</p> <p>3. THIS WELL LOCATION SHOWN HEREON HAS BEEN SURVEYED ON THE GROUND UNDER MY SUPERVISION AND PREPARED ACCORDING TO THE EVIDENCE FOUND AT THE TIME OF SURVEY, AND DATA PROVIDED BY EOG RESOURCES, INC. THIS CERTIFICATION IS MADE AND LIMITED TO THOSE PERSONS OR ENTITIES SHOWN ON THE FACE OF THIS PLAT AND IS NON-TRANSFERABLE. THIS SURVEY IS CERTIFIED FOR THIS TRANSACTION ONLY.</p>
FILE:AD_BANDIT_29_STATE_COM_601H			
DRAWN BY: A.V.F.			
SHEET: 1 OF 1			