

District I
1625 N. French Dr., Hobbs, NM 88240
Phone: (575) 393-6161 Fax: (575) 393-0720
District II
811 S. First St., Artesia, NM 88210
Phone: (575) 748-1283 Fax: (575) 748-9720
District III
1000 Rio Brazos Road, Aztec, NM 87410
Phone: (505) 334-6178 Fax: (505) 334-6170
District IV
1220 S. St. Francis Dr., Santa Fe, NM 87505
Phone: (505) 476-3460 Fax: (505) 476-3462

State of New Mexico
Energy, Minerals & Natural Resources
Department
OIL CONSERVATION DIVISION
1220 South St. Francis Dr.
Santa Fe, NM 87505

HOBBS OCD
OCT 23 2019
RECEIVED

FORM C-102
Revised August 1, 2011
Submit one copy to appropriate
District Office

☐ AMENDED REPORT

WELL LOCATION AND ACREAGE DEDICATION PLAT

¹ API Number 30-025-45622		² Pool Code 52767		³ Pool Name Rock Lake;Wolfcamp	
⁴ Property Code 324998		⁵ Property Name UNCLE DON STATE 35-22S-35E			⁶ Well Number #1
⁷ OGRID No. 228937		⁸ Operator Name MATADOR PRODUCTION COMPANY			⁹ Elevation 3532'

¹⁰Surface Location

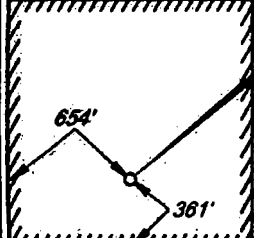
UL or lot no. M	Section 35	Township 22-S	Range 35-E	Lot Idn -	Feet from the 361'	North/South line SOUTH	Feet from the 654'	East/West line WEST	County LEA
---------------------------	----------------------	-------------------------	----------------------	---------------------	------------------------------	----------------------------------	------------------------------	-------------------------------	----------------------

¹¹Bottom Hole Location If Different From Surface

UL or lot no. -	Section -	Township -	Range -	Lot Idn -	Feet from the -	North/South line -	Feet from the -	East/West line -	County -
---------------------------	---------------------	----------------------	-------------------	---------------------	---------------------------	------------------------------	---------------------------	----------------------------	--------------------

¹² Dedicated Acres 40	¹³ Joint or Infill	¹⁴ Consolidation Code	¹⁵ Order No.
--	-------------------------------	----------------------------------	-------------------------

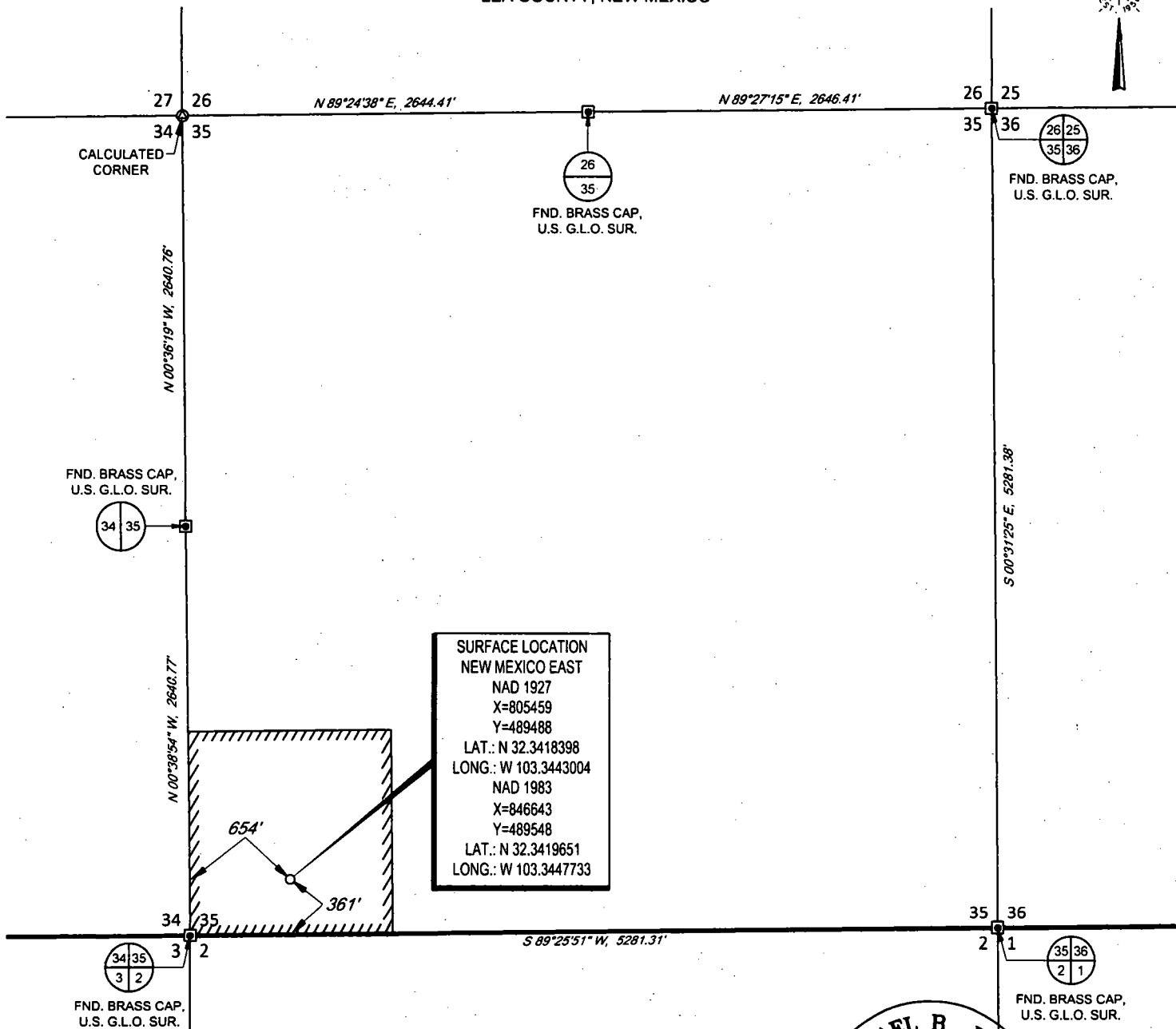
No allowable will be assigned to this completion until all interests have been consolidated or a non-standard unit has been approved by the division.

<p>16</p> <p>SURFACE LOCATION NEW MEXICO EAST NAD 1927 X=805459 Y=489488 LAT.: N 32.3418398 LONG.: W 103.3443004 NAD 1983 X=848643 Y=489548 LAT.: N 32.3419651 LONG.: W 103.3447733</p> 				<p>17 OPERATOR CERTIFICATION</p> <p>I hereby certify that the information contained herein is true and complete to the best of my knowledge and belief, and that this organization either owns a working interest or undivided mineral interest in the land (including the proposed bottom hole location) or has a right to drill this well at this location pursuant to a contract with an owner of such a mineral or working interest, or to a voluntary pooling agreement or a compulsory pooling order heretofore entered by the division.</p> <p><i>Sara Hartsfield</i> 9/18/19 Signature Date</p> <p>Sara Hartsfield Printed Name</p> <p>shartsfield@matadorresources.com E-mail Address</p>	
				<p>18 SURVEYOR CERTIFICATION</p> <p>I hereby certify that the well location shown on this plat was plotted from field notes of actual surveys made by me or under my supervision, and that the same is true to the best of my belief.</p> <p>01/18/2019 Date of Survey</p> <p><i>Michael Brown</i> Signature and Seal of Professional Surveyor</p> <p>18329 Professional Surveyor</p> <p>Certificate Number</p>	

SCALE: 1" = 1000'
0' 500' 1000'



SECTION 35, TOWNSHIP 22-S, RANGE 35-E, N.M.P.M.
LEA COUNTY, NEW MEXICO

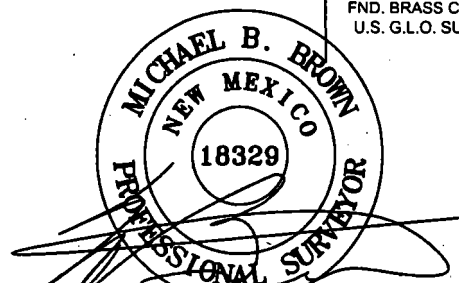


SURFACE LOCATION
NEW MEXICO EAST
NAD 1927
X=805459
Y=489488
LAT.: N 32.3418398
LONG.: W 103.3443004
NAD 1983
X=846643
Y=489548
LAT.: N 32.3419651
LONG.: W 103.3447733

LEASE NAME & WELL NO.: _____ UNCLE DON STATE #1
SECTION 35 TWP 22-S RGE 35-E SURVEY N.M.P.M.
COUNTY LEA STATE NM
DESCRIPTION 361' FSL & 654' FWL

DISTANCE & DIRECTION
FROM INT. OF TEAGUE SWITCH & DELAWARE BASIN RD. GO WEST ON
DELAWARE BASIN RD. ±1.8 MILES. THENCE NORTH (RIGHT) ON A
PROPOSED RD ±104 FEET TO A POINT ±400 FEET SOUTH OF THE
LOCATION.

ALL BEARINGS, DISTANCES, AND COORDINATE VALUES CONTAINED HEREON ARE GRID BASED UPON THE NEW MEXICO COORDINATE SYSTEM OF 1983, EAST ZONE, U.S. SURVEY FEET
THIS EASEMENT/SERVITUDE LOCATION SHOWN HEREON HAS BEEN SURVEYED ON THE GROUND UNDER MY SUPERVISION AND PREPARED ACCORDING TO THE EVIDENCE FOUND AT THE TIME OF SURVEY, AND DATA PROVIDED BY MATADOR PRODUCTION COMPANY. THIS CERTIFICATION IS MADE AND LIMITED TO THOSE PERSONS OR ENTITIES SHOWN ON THE FACE OF THIS PLAT AND IS NON-TRANSFERABLE. THIS SURVEY IS CERTIFIED FOR THIS TRANSACTION ONLY.
AS OF THE DATE OF SURVEY, ALL ABOVE GROUND APPURTENANCES WITHIN 300' OF THE STAKED LOCATION ARE SHOWN HEREON.



Michael Blake Brown, P.S. No. 18329
JANUARY 31, 2019

TOPOGRAPHIC
LOYALTY INNOVATION LEGACY
1400 EVERMAN PARKWAY, Ste. 146 • FT. WORTH, TEXAS 76140
TELEPHONE: (817) 744-7512 • FAX (817) 744-7554
2603 NORTH BIG SPRING • MIDLAND, TEXAS 79705
TELEPHONE: (432) 682-1653 OR (800) 767-1653 • FAX (432) 682-1743
WWW.TOPOGRAPHIC.COM