

District I  
1625 N. French Dr., Hobbs, NM 88240  
Phone: (575) 393-6161 Fax: (575) 393-0720  
District II  
811 S. First St., Artesia, NM 88210  
Phone: (575) 748-1283 Fax: (575) 748-9720  
District III  
1000 Rio Brazos Road, Aztec, NM 87410  
Phone: (505) 334-6178 Fax: (505) 334-6170  
District IV  
1220 S. St. Francis Dr., Santa Fe, NM 87505  
Phone: (505) 476-3460 Fax: (505) 476-3462

State of New Mexico  
Energy, Minerals & Natural Resources  
Department  
OIL CONSERVATION DIVISION  
1220 South St. Francis Dr.  
Santa Fe, NM 87505

FORM C-102

Revised August 1, 2011

Submit one copy to appropriate

District Office

☐ AMENDED REPORT

WELL LOCATION AND ACREAGE DEDICATION PLAT

<sup>1</sup> API Number 30-025-45765	<sup>2</sup> Pool Code 98092	<sup>3</sup> Well Name WC025 G08 3361; UPPER WOLFCAMP
<sup>4</sup> Property Code 320644	<sup>5</sup> Property Name BANDIT 29 STATE COM	<sup>6</sup> Well Number 704H
<sup>7</sup> OGRID No. 7377	<sup>8</sup> Operator Name EOG RESOURCES, INC.	<sup>9</sup> Elevation 3533'

<sup>10</sup>Surface Location

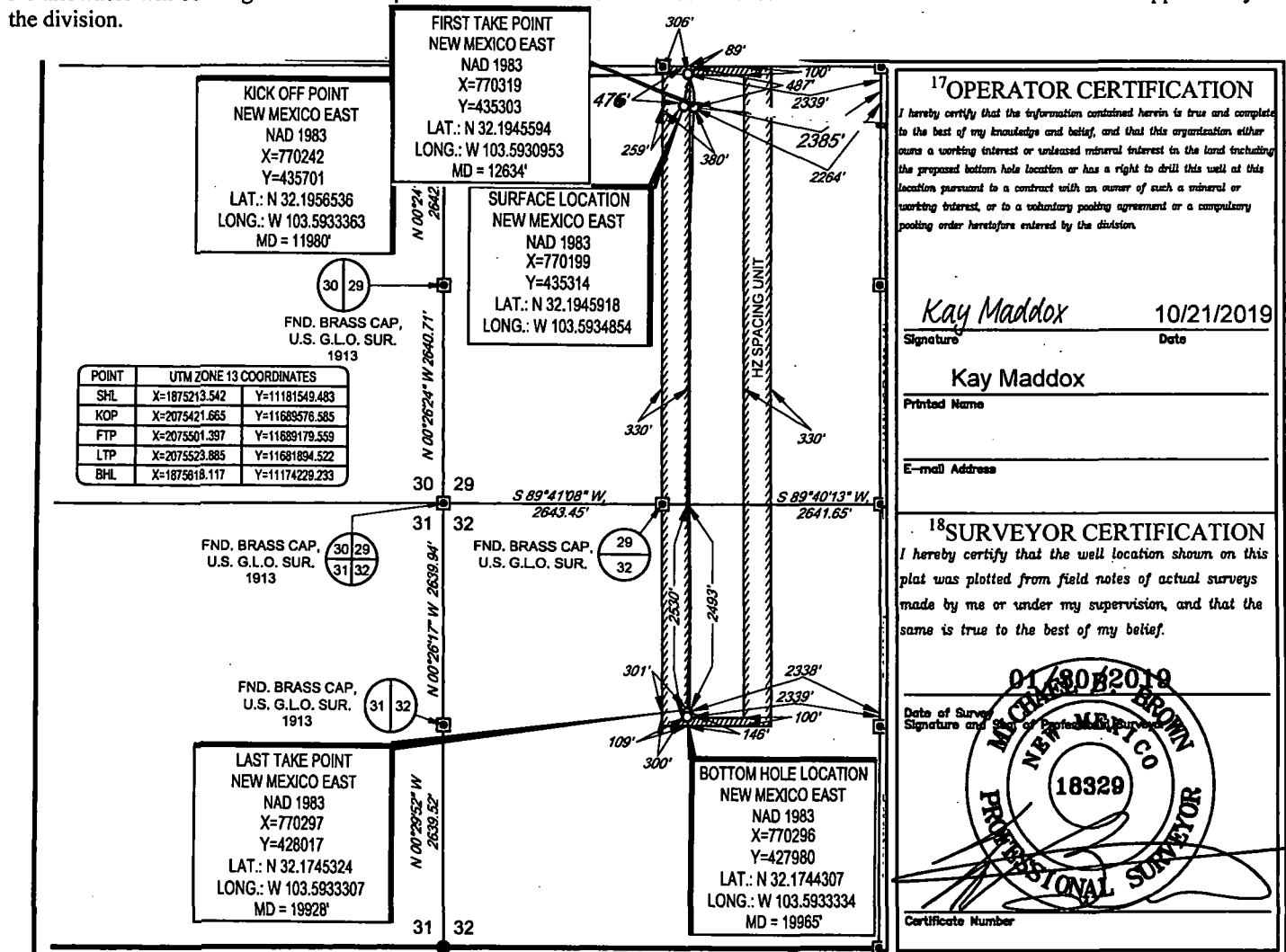
UL or lot no.	Section	Township	Range	Lot Idn	Feet from the	North/South line	Feet from the	East/West line	County
B	29	24-S	33-E	-	476'	NORTH	2315'	EAST	LEA

<sup>11</sup>Bottom Hole Location If Different From Surface

UL or lot no.	Section	Township	Range	Lot Idn	Feet from the	North/South line	Feet from the	East/West line	County
G	32	24-S	33-E	-	2530'	NORTH	2339'	EAST	LEA

<sup>12</sup> Dedicated Acres 240.00	<sup>13</sup> Joint or Infill	<sup>14</sup> Consolidation Code	<sup>15</sup> Order No.
---	-------------------------------	----------------------------------	-------------------------

No allowable will be assigned to this completion until all interests have been consolidated or a non-standard unit has been approved by the division.



SCALE: 1" = 2000'

0' 1000' 2000'

SECTIONS 29, TOWNSHIP 24-S, RANGE 33-E, N.M.P.M.  
LEA COUNTY, NEW MEXICO



FND. BRASS CAP.  
U.S. G.L.O. SUR.  
1913

FND. BRASS CAP.  
U.S. G.L.O. SUR.  
1913

FND. BRASS CAP.  
U.S. G.L.O. SUR.  
1913

KICK OFF POINT  
NEW MEXICO EAST  
NAD 1983  
X=770242  
Y=435701  
LAT.: N 32.1956536  
LONG.: W 103.5933363  
MD = 11980'

SURFACE LOCATION  
NEW MEXICO EAST  
NAD 1983  
X=770199  
Y=435314  
LAT.: N 32.1945918  
LONG.: W 103.5934854

FIRST TAKE POINT  
NEW MEXICO EAST  
NAD 1983  
X=770319  
Y=435303  
LAT.: N 32.1945594  
LONG.: W 103.5930953  
MD = 12634'

POINT	UTM ZONE 13 COORDINATES
SHL	X=1875213.542 Y=11181549.483
KOP	X=2075421.665 Y=11689576.585
FTP	X=2075501.397 Y=11689179.559
LTP	X=2075523.885 Y=11681894.522
BHL	X=1875618.117 Y=11174229.233

FND. BRASS CAP.  
U.S. G.L.O. SUR.  
1913

FND. BRASS CAP.  
U.S. G.L.O. SUR.  
1913

FND. BRASS CAP.  
U.S. G.L.O. SUR.  
1913

FND. BRASS CAP.  
U.S. G.L.O. SUR.  
1913

LAST TAKE POINT  
NEW MEXICO EAST  
NAD 1983  
X=770297  
Y=428017  
LAT.: N 32.1745324  
LONG.: W 103.5933307  
MD = 19928'

BOTTOM HOLE LOCATION  
NEW MEXICO EAST  
NAD 1983  
X=770296  
Y=427980  
LAT.: N 32.1744307  
LONG.: W 103.5933334  
MD = 19965'

FND. BRASS CAP.  
U.S. G.L.O. SUR.  
1913

FND. BRASS CAP.  
U.S. G.L.O. SUR.  
1913

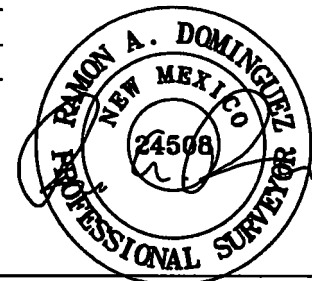
IRON ROD  
FOUND

LEASE NAME & WELL NO.: BANDIT 29 STATE COM 704H  
SECTION 29 TWP 24-S RGE 33-E SURVEY N.M.P.M.  
COUNTY LEA STATE NM ELEVATION 3534'  
DESCRIPTION 475' FNL & 2385' FEL



**TOPOGRAPHIC**  
LOYALTY INNOVATION LEGACY

1400 EVERMAN PARKWAY, Ste. 148 • FT. WORTH, TEXAS 76140  
TELEPHONE: (817) 744-7512 • FAX (817) 744-7554  
2903 NORTH BIG SPRING • MIDLAND, TEXAS 79705  
TELEPHONE: (432) 682-1653 OR (800) 767-1653 • FAX (432) 682-1743  
WWW.TOPOGRAPHIC.COM



Ramon A. Dominguez, P.S. No. 24508  
OCTOBER 17, 2019

**Geog resources, Inc.**

BANDIT 29 STATE COM 704H AS-COMPLETED	REVISION:
DATE: 10/17/2019	
FILE: AD_BANDIT_29_STATE_COM_704H	
DRAWN BY: JLS	
SHEET: 1 OF 1	

NOTES:

1. ORIGINAL DOCUMENT SIZE: 8.5" X 11"
2. ALL BEARINGS, DISTANCES, AND COORDINATE VALUES CONTAINED HEREIN ARE GRID BASED UPON THE NEW MEXICO COORDINATE SYSTEM OF 1983, EAST ZONE, U.S. SURVEY FEET.
3. THIS WELL LOCATION SHOWN HEREON HAS BEEN SURVEYED ON THE GROUND UNDER MY SUPERVISION AND PREPARED ACCORDING TO THE EVIDENCE FOUND AT THE TIME OF SURVEY, AND DATA PROVIDED BY GEO RESOURCES, INC. THIS CERTIFICATION IS MADE AND LIMITED TO THOSE PERSONS OR ENTITIES SHOWN ON THE FACE OF THIS PLAT AND IS NON-TRANSFERABLE. THIS SURVEY IS CERTIFIED FOR THIS TRANSACTION ONLY.