

A/P

DISTRICT I  
1625 N. FRENCH DR., HOBBS, NM 88240  
Phone: (505) 532-6181 Fax: (505) 532-0720

DISTRICT II  
811 S. FIRST ST., ARTESIA, NM 88210  
Phone: (505) 748-1853 Fax: (505) 748-0720

DISTRICT III  
1000 RIO BRAZOS RD., AZTEC, NM 87410  
Phone: (505) 334-6176 Fax: (505) 334-6170

DISTRICT IV  
1820 S. ST. FRANCIS DR., SANTA FE, NM 87505  
Phone: (505) 476-3460 Fax: (505) 476-3463

State of New Mexico  
Energy, Minerals & Natural Resources Department

OIL CONSERVATION DIVISION  
1220 SOUTH ST. FRANCIS  
Santa Fe, New Mexico 87505

Form C-102

Revised August 1, 2011

Submit one copy to appropriate

District Office

OCT 23 2019

☐ AMENDED REPORT

WELL LOCATION AND ACREAGE DEDICATION

API Number <b>30-025-46460</b>	Pool Code <b>7330 98175</b>	Well Name <b>BRINNINSTOOL, WOLFCAMP</b>
Property Code <b>316705</b>	Property Name <b>BLUE KRAIT 23-14 FED</b>	Well Number <b>37H</b>
GRID No. <b>6137</b>	Operator Name <b>DEVON ENERGY PRODUCTION COMPANY, L.P.</b>	Elevation <b>3556.8'</b>

Surface Location

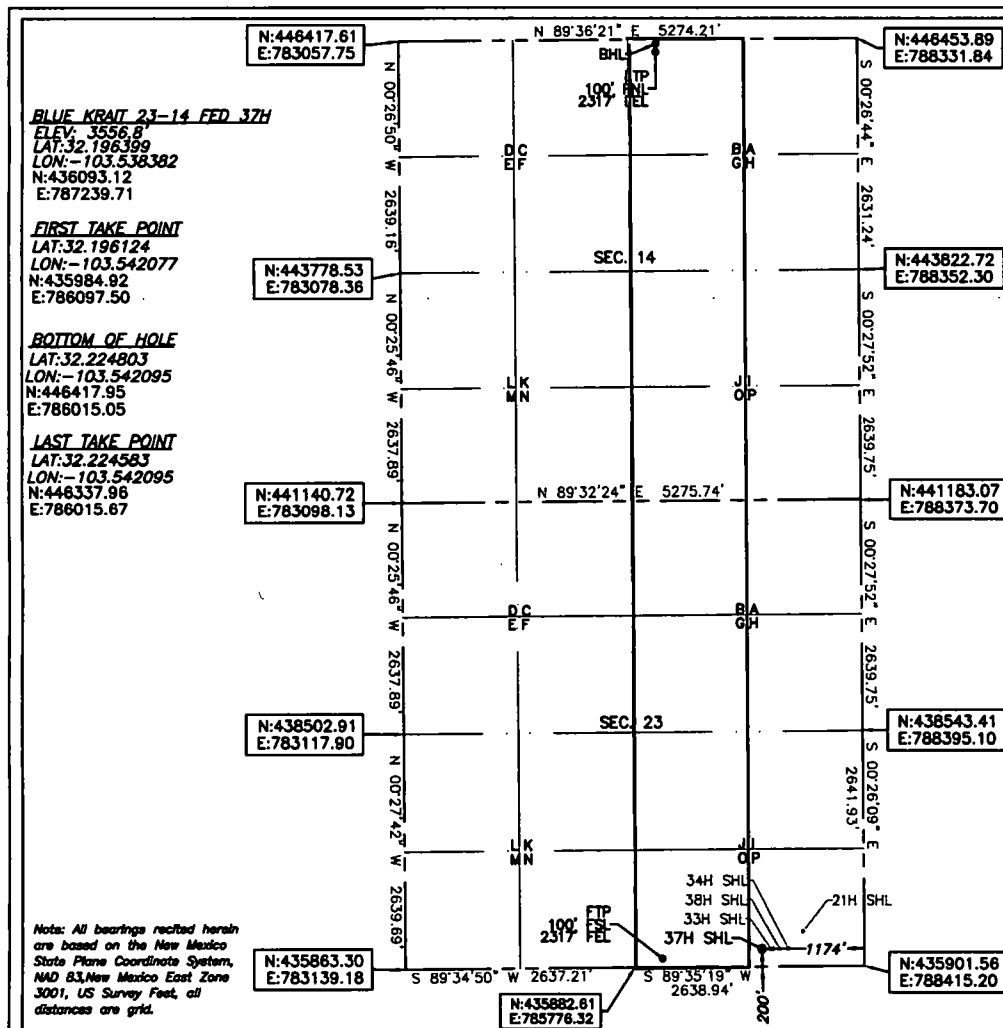
UL or lot No.	Section	Township	Range	Lot Idn	Feet from the	North/South line	Feet from the	East/West line	County
P	23	24-S	33-E		200	SOUTH	1174	EAST	LEA

Bottom Hole Location If Different From Surface

UL or lot No.	Section	Township	Range	Lot Idn	Feet from the	North/South line	Feet from the	East/West line	County
B	14	24-S	33-E		20	NORTH	2317	EAST	LEA

Dedicated Acres	Joint or Infill	Consolidation Code	Order No.
320			

NO ALLOWABLE WILL BE ASSIGNED TO THIS COMPLETION UNTIL ALL INTERESTS HAVE BEEN CONSOLIDATED  
OR A NON-STANDARD UNIT HAS BEEN APPROVED BY THE DIVISION



OPERATOR CERTIFICATION

I hereby certify that the information herein is true and complete to the best of my knowledge and belief, and that this organization either owns a working interest or unleased mineral interest in the land including the proposed bottom hole location or has a right to drill this well at this location pursuant to a contract with an owner of such mineral or working interest, or to a voluntary pooling agreement or a compulsory pooling order heretofore entered by the division.

Rebecca Deal 1/21/2019

Signature Date

Rebecca Deal, Regulatory Analyst

Printed Name

rebecca.deal@dmv.com

E-mail Address

SURVEYOR CERTIFICATION

I hereby certify that the well location shown on this plat was plotted from field notes of actual surveys made by me or under my supervision, and that the same is true and correct to the best of my belief.

11/2018

Date of Survey

Signature & Seal of Professional Surveyor



12/04/18

Certificate No. 22404 B. L. LAMAN

Date of Survey: 11/16/18 DRAWN BY: CM