

Intent ☒ As Drilled ☐

API #

Operator Name: DEVON ENERGY PRODUCTION COMPANY, LP.	Property Name: BLUE KRAIT 23-14 FED	Well Number 27H
-----------------------------------------------------------	----------------------------------------	--------------------

Kick Off Point (KOP)

UL	Section 23	Township 24S	Range 33E	Lot	Feet 298	From N/S FSL	Feet 1965	From E/W FWL	County LEA
Latitude 32.196681					Longitude -103.54556			NAD 83	

First Take Point (FTP)

UL N	Section 23	Township 24	Range 33	Lot	Feet 100	From N/S SOUTH	Feet 1965	From E/W WEST	County LEA
Latitude 32.196124					Longitude 103.545290			NAD 83	

Last Take Point (LTP)

UL C	Section 14	Township 24	Range 33	Lot	Feet 100	From N/S NORTH	Feet 1965	From E/W WEST	County LEA
Latitude 32.224584					Longitude 103.545303			NAD 83	

Is this well the defining well for the Horizontal Spacing Unit? ☐ N

Is this well an infill well? ☐ Y

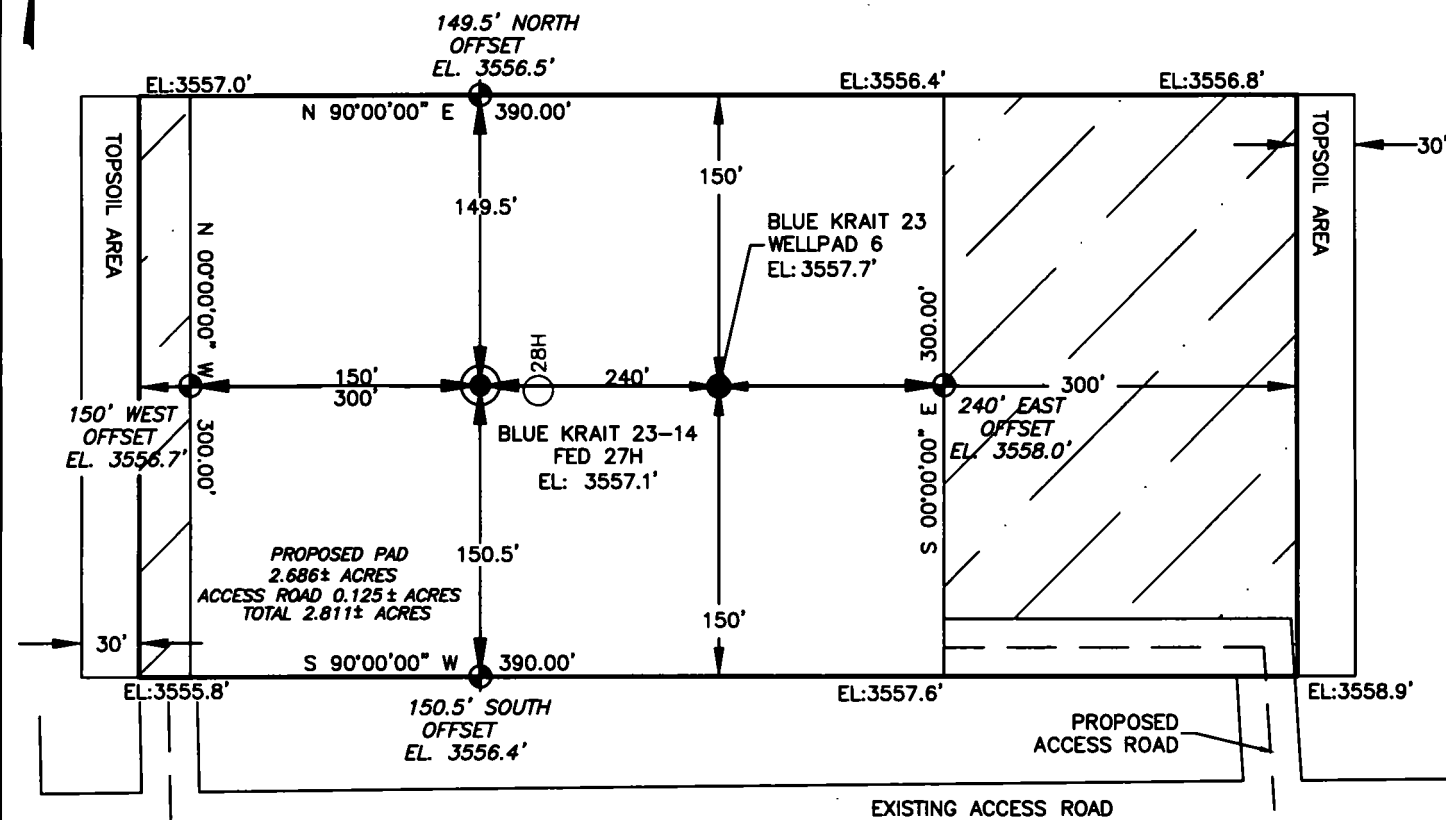
If infill is yes please provide API if available, Operator Name and well number for Defining well for Horizontal Spacing Unit.

API #  
30-025-43236

Operator Name: DEVON ENERGY PRODUCTION CO.	Property Name: Blue Krait 23-14 Fed	Well Number 2H
-----------------------------------------------	----------------------------------------	-------------------

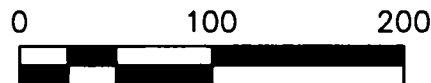
KZ 06/29/2018

SECTION 23, TOWNSHIP 24 SOUTH, RANGE 33 EAST, N.M.P.M.  
LEA COUNTY, STATE OF NEW MEXICO  
SITE MAP



Note: All bearings recited herein are based on the New Mexico State Plane Coordinate System, NAD 83, New Mexico East Zone 3001, US Survey Feet, all distances are grid.

DEVON ENERGY PRODUCTION COMPANY, L.P.  
BLUE KRAIT 23-14 FED 27H  
LOCATED 248 FT. FROM THE SOUTH LINE  
AND 2769 FT. FROM THE EAST LINE OF  
SECTION 23, TOWNSHIP 24 SOUTH,  
RANGE 33 EAST, N.M.P.M.  
LEA COUNTY, STATE OF NEW MEXICO



DIRECTIONS TO LOCATION

FROM THE INTERSECTION OF NM-128 AND VACA LN, HEAD SOUTH ON VACA LN FOR 1.13 MILES. TURN RIGHT AND HEAD WEST ON AN EXISTING ACCESS ROAD FOR 0.95 MILES TO THE POINT OF BEGINNING OF A PROPOSED ACCESS ROAD. TURN RIGHT AND HEAD NORTH FOR 69' TO THE SOUTHEAST CORNER OF THE BLUE KRAIT 23 WELLPAD 6.

HORIZON ROW LLC

DEVON ENERGY PRODUCTION CO., L.P.

Drawn by:  
CHRIS MAAS

Date: 11/29/2018

Drawn for:

