

District I

1625 N. French Dr., Hobbs, NM 88240

District II

1301 W. Grand Ave., Artesia, NM 88210

District III

1000 Rio Brazos Rd., Aztec, NM 87410

District IV

1220 S. St. Francis Dr., Santa Fe, NM  
87505

State of New Mexico  
Energy, Minerals and Natural Resources

OIL CONSERVATION DIVISION

1220 South St. Francis  
Santa Fe, NM 87505

October 13, 2009

WELL API NO.

30-025-04161

5. Indicate Type of Lease

STATE ☐ FEE ☐

6. State Oil & Gas Lease No.

7. Lease Name or Unit Agreement Name

North Monument G/SA Unit Blk. 18

8. Well Number 13

9. OGRID Number 873

10. Pool name or Wildcat

Eunice Monument G/SA

SUNDRY NOTICES AND REPORTS ON WELLS

(DO NOT USE THIS FORM FOR PROPOSALS TO DRILL OR TO DEEPEN OR PLUG BACK TO A  
DIFFERENT RESERVOIR. USE "APPLICATION FOR PERMIT" (FORM C-101) FOR SUCH  
PROPOSALS.)

1. Type of Well: Oil Well ☐ Gas Well ☒ injection well

2. Name of Operator

Apache Corp.

3. Address of Operator

P O box Drawer D Monument NM 88265

4. Well Location

Unit Letter M : 660 feet from the S line and 660 feet from the  
W line

Section 2

Township 20S

Range 36E

NMPM

Lea

County

11. Elevation (Show whether DR, RKB, RT, GR, etc.)

12. Check Appropriate Box to Indicate Nature of Notice, Report or Other Data

NOTICE OF INTENTION TO:

PERFORM REMEDIAL WORK ☐ PLUG AND ABANDON ☐  
TEMPORARILY ABANDON ☐ CHANGE PLANS ☐  
PULL OR ALTER CASING ☐ MULTIPLE COMPL ☐  
DOWNHOLE COMMINGLE ☐

OTHER: ☐

SUBSEQUENT REPORT OF:

REMEDIAL WORK ☐ ALTERING CASING ☐  
COMMENCE DRILLING OPNS. ☐ P AND A ☐  
CASING/CEMENT JOB ☐

OTHER: MBT ☐

13. Describe proposed or completed operations. (Clearly state all pertinent details, and give pertinent dates, including estimated date  
of starting any proposed work). SEE RULE 19.15.7.14 NMAC. For Multiple Completions: Attach wellbore diagram of  
proposed completion or recompletion.

Move in a McLaskey pump truck. Pressure test the casing to 540 psi and chart the pressure for 32 minutes.  
Lost 20 lbs during the test.

Spud Date:

Rig Release Date:

I hereby certify that the information above is true and complete to the best of my knowledge and belief.

SIGNATURE Justin Solomon TITLE Pumper II DATE 7/12/19

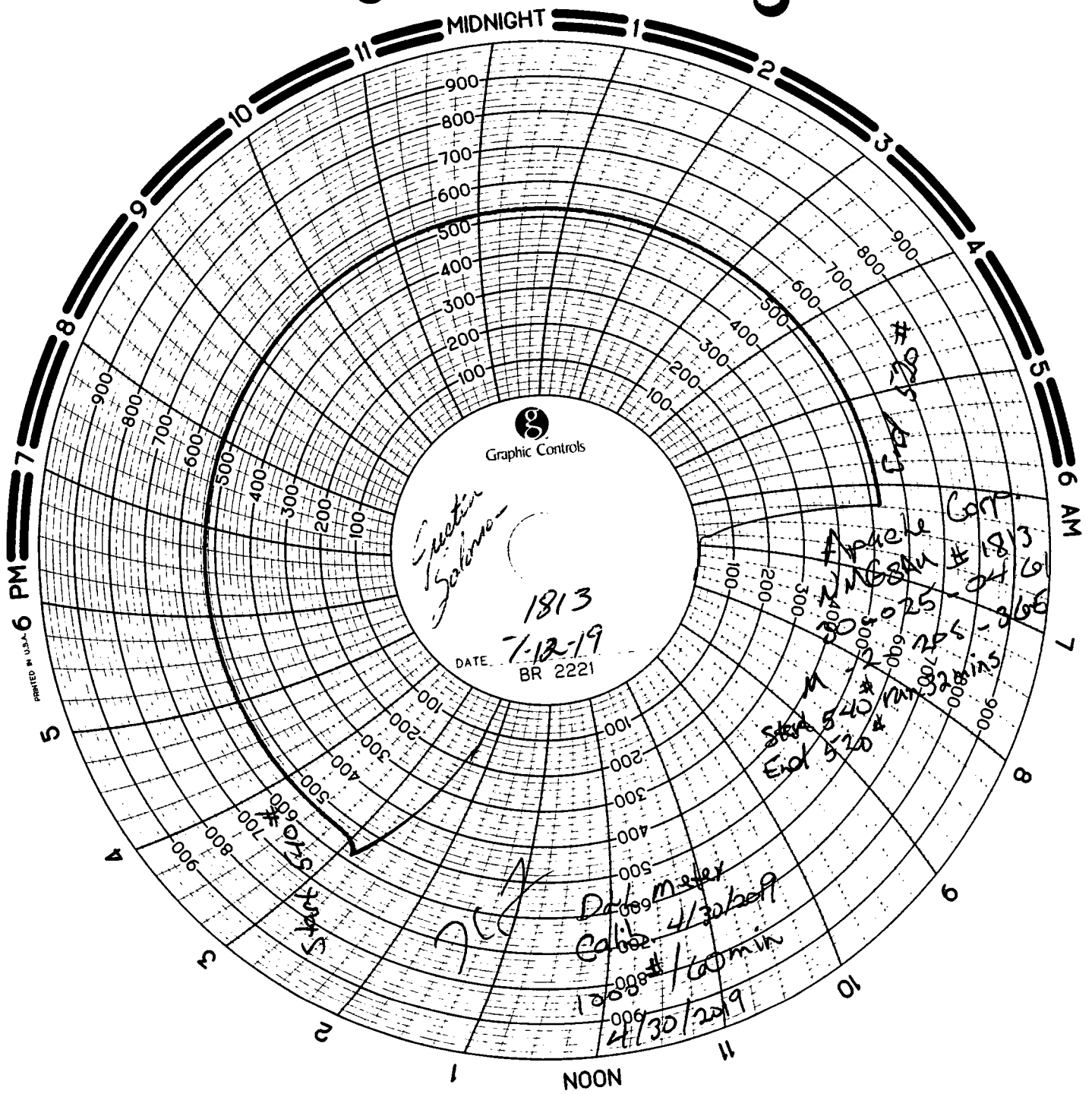
Type or print name Justin Solomon E-mail address: Justin.Solomon@apacheccorp.com

PHONE: 575-390-4054

For State Use Only

APPROVED BY: Kelly Forster TITLE C.O. A DATE 11-4-19

Conditions of Approval (if any):



State of New Mexico  
Energy, Minerals and Natural Resources Department  
Oil Conservation Division Hobbs District Office

BRADENHEAD TEST REPORT

Operator Name <i>Apache Corp</i>	API Number <i>30-025-04161</i>
Property Name <i>NM65AU</i>	Well No. <i>013 (1813)</i>

* Surface Location									
UL - Lot <i>M</i>	Section <i>2</i>	Township <i>20S</i>	Range <i>36E</i>		Feet from <i>660</i>	N/S Line <i>S</i>	Feet from <i>660</i>	E/W Line <i>W</i>	County <i>Lea</i>

Well Status									
TA'D WELL YES	<i>(NO)</i>	SHUT-IN YES	<i>(NO)</i>	<i>(INJ)</i>	INJECTOR SWD	OIL	PRODUCER GAS	DATE <i>7-12-2019</i>	

OBSERVED DATA

	(A) Surface	(B) Interm(1)	(C) Interm(2)	(D) Prod Csg	(E) Tubing
Pressure	<i>0</i>		<i>0</i>	<i>80</i>	<i>300</i>
Flow Characteristics	<i>NONE</i>		<i>NONE</i>	<i>Blow</i>	
Puff	<i>Y/N</i>	<i>Y/N</i>	<i>Y/N</i>	<i>Y/N</i>	CO2
Steady Flow	<i>Y/N</i>	<i>Y/N</i>	<i>Y/N</i>	<i>Y/N</i>	WTR <i>X</i>
Surges	<i>Y/N</i>	<i>Y/N</i>	<i>Y/N</i>	<i>Y/N</i>	GAS <i>—</i>
Down to nothing	<i>Y/N</i>	<i>Y/N</i>	<i>Y/N</i>	<i>Y/N</i>	Type of fluid injected for
Gas or Oil	<i>Y/N</i>	<i>Y/N</i>	<i>Y/N</i>	<i>Y/N</i>	Waterflood if
Water	<i>Y/N</i>	<i>Y/N</i>	<i>Y/N</i>	<i>Y/N</i>	applies

Remarks - Please state for each string (A,B,C,D,E) pertinent information regarding bleed down or continuous build up if applies.

*(D). bled to 0 in 2 minutes*

Signature: <i>Justin Solomon</i>	OIL CONSERVATION DIVISION
Printed name: <i>Justin Solomon</i>	Entered into RBDMS
Title: <i>Pumper II</i>	Re-test <i>X 7</i>
E-mail Address: <i>Justin.Solomon@apachecorp.com</i>	
Date: <i>7-12-19</i>	
Phone: <i>575-390-4054</i>	
Witness:	