

District I
1625 N. French Dr., Hobbs, NM 88240
Phone: (575) 393-6161 Fax: (575) 393-0720
District II
811 S. First St., Artesia, NM 88210
Phone: (575) 748-1283 Fax: (575) 748-9720
District III
1000 Rio Brazos Road, Aztec, NM 87410
Phone: (505) 334-6178 Fax: (505) 334-6170
District IV
1220 S. St. Francis Dr., Santa Fe, NM 87505
Phone: (505) 476-3460 Fax: (505) 476-3462

State of New Mexico
Energy, Minerals & Natural Resources Department
OIL CONSERVATION DIVISION
1220 South St. Francis Dr.
Santa Fe, NM 87505

Form C-102
Revised August 1, 2011
Submit one copy to appropriate
District Office

☐ AMENDED REPORT

RECEIVED
NOV 07 2019

WELL LOCATION AND ACREAGE DEDICATION

| | | |
|------------------------------|--|--|
| 1 API Number 30-025-45782 | 2 Pool Code 97293 | 3 Pool Name Ojo Chisoi Bone Spring, South |
| 4 Property Code 322320 | 5 Property Name AIRSTREAM 24 STATE COM | 6 Well Number 506H |
| 7 OGRID No. 372145 | 8 Operator Name CENTENNIAL RESOURCE PRODUCTION, LLC | 9 Elevation 3524.7' |

| 10 Surface Location | | | | | | | | | |
|---------------------|---------------|-----------------|--------------|---------|-----------------------------|---------------------------|----------------------|------------------------|---------------|
| UL or lot no. P | Section 13 | Township 22S | Range 34E | Lot Idn | Feet from the 599 1/2 60 | North/South line SOUTH | Feet from the 808 | East/West line EAST | County LEA |

| 11 Bottom Hole Location If Different From Surface | | | | | | | | | |
|---|---------------|--------------------|--------------|-----------------------|---------------------|---------------------------|----------------------|------------------------|---------------|
| UL or lot no. P | Section 25 | Township 22S | Range 34E | Lot Idn | Feet from the 91 | North/South line SOUTH | Feet from the 328 | East/West line EAST | County LEA |
| 12 Dedicated Acres 640 | | 13 Joint or Infill | | 14 Consolidation Code | | 15 Order No. | | | |

No allowable will be assigned to this completion until all interests have been consolidated or a non-standard unit has been approved by the division.

- 16
- = AS-DRILLED SHL
 - ◆ = AS-DRILLED FTP/LTP
 - = AS-DRILLED BHL
 - ▲ = SECTION CORNER LOCATED

| | |
|---|--|
| NAD 83 (AS-DRILLED SHL) | |
| LATITUDE = 32°23'09.94" (32.386094°) | |
| LONGITUDE = 103°25'03.73" (103.417704°) | |
| STATE PLANE NAD 83 (N.M. EAST) | |
| Y: 505402.36' X: 823981.09' | |
| UTM, NAD 83 (ZONE 13) | |
| Y: 11759601.14' X: 2128718.80' | |

| | |
|---|--|
| NAD 83 (AS-DRILLED FTP) | |
| LATITUDE = 32°23'01.28" (32.383690°) | |
| LONGITUDE = 103°24'58.02" (103.416118°) | |
| STATE PLANE NAD 83 (N.M. EAST) | |
| Y: 504531.84' X: 824478.21' | |
| UTM, NAD 83 (ZONE 13) | |
| Y: 11758733.85' X: 2129221.27' | |

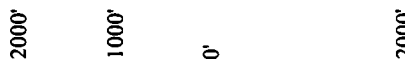
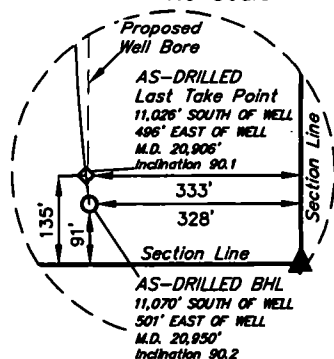
| | |
|---|--|
| NAD 83 (AS-DRILLED LTP) | |
| LATITUDE = 32°21'20.83" (32.355786°) | |
| LONGITUDE = 103°24'58.52" (103.416254°) | |
| STATE PLANE NAD 83 (N.M. EAST) | |
| Y: 494379.88' X: 824523.06' | |
| UTM, NAD 83 (ZONE 13) | |
| Y: 11748583.65' X: 2129329.37' | |

| | |
|---|--|
| NAD 83 (AS-DRILLED BHL) | |
| LATITUDE = 32°21'20.40" (32.355666°) | |
| LONGITUDE = 103°24'58.46" (103.416238°) | |
| STATE PLANE NAD 83 (N.M. EAST) | |
| Y: 494336.21' X: 824528.43' | |
| UTM, NAD 83 (ZONE 13) | |
| Y: 11748540.02' X: 2129335.01' | |

APPROXIMATE WELL
BORE DISTANCE FROM
FTP TO LTP

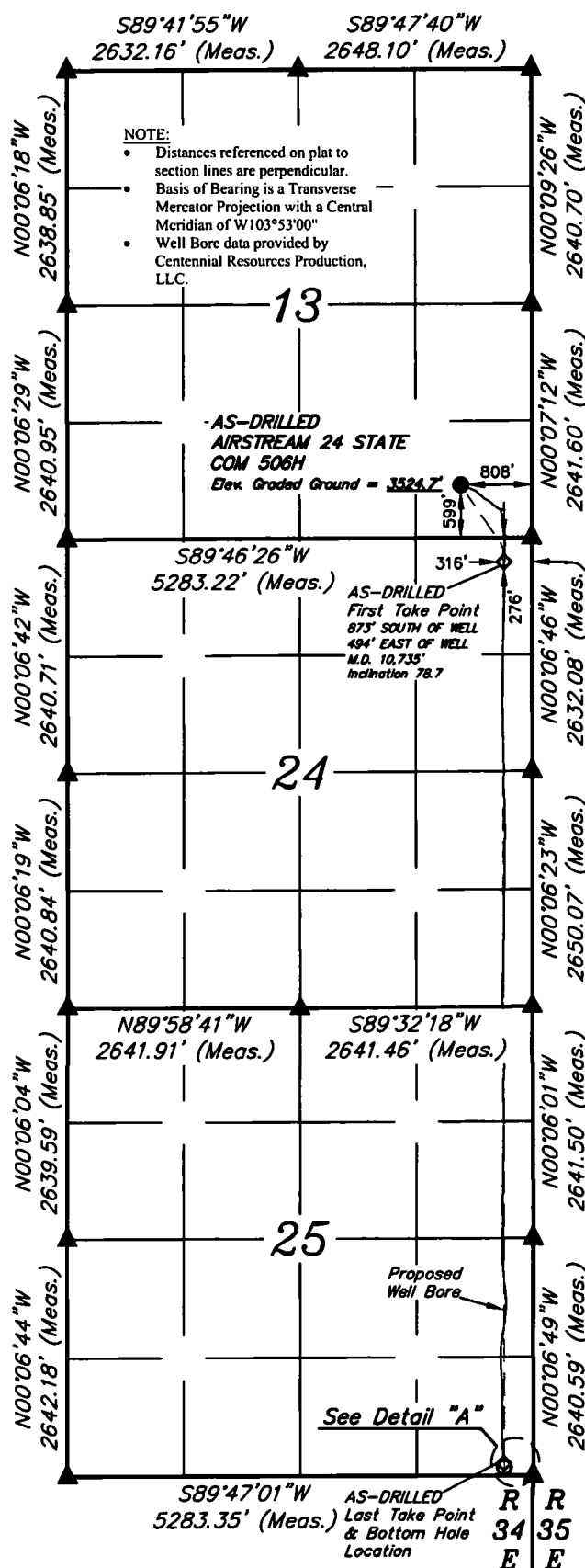
| | |
|------------|------------|
| Section 24 | 5009.65 |
| Section 25 | 5,154.75' |
| Total | 10,164.40' |

Detail "A"
No Scale



SCALE

DRAWN BY: T.A. 10-23-19



17 OPERATOR
CERTIFICATION

I hereby certify that the information contained herein is true and complete to the best of my knowledge and belief, and that this organization either owns a working interest or unleased mineral interest in the land including the proposed bottom hole location or has a right to drill this well at this location pursuant to a contract with an owner of such a mineral or working interest, or to a voluntary pooling agreement or a compulsory pooling order heretofore entered by the division.

Signature: *Sarah Ferreyros* Date: 11/6/19

Printed Name: Sarah Ferreyros

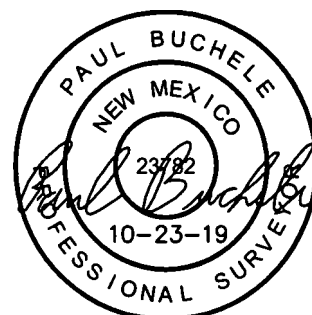
E-mail Address: sarah.ferreyros@cddevinc.com

18 SURVEYOR
CERTIFICATION

I hereby certify that the well location shown on this plat was plotted from field notes of actual surveys made by me or under my supervision, and that the same is true and correct to the best of my belief.

August 8, 2019

Date of Survey
Signature and Seal of Professional Surveyor:



Certificate Number: