

District I
1625 N. French Dr., Hobbs, NM 88240
Phone: (575) 393-6161 Fax: (575) 393-0720
District II
811 S. First St., Artesia, NM 88210
Phone: (575) 748-1283 Fax: (575) 748-9720
District III
1000 Rio Brazos Road, Aztec, NM 87410
Phone: (505) 334-6178 Fax: (505) 334-6170
District IV
1220 S. St. Francis Dr., Santa Fe, NM 87505
Phone: (505) 476-3460 Fax: (505) 476-3462

State of New Mexico
Energy, Minerals & Natural Resources
Department
OIL CONSERVATION DIVISION
1220 South St. Francis Dr.
Santa Fe, NM 87505

FORM C-102
Revised August 1, 2011
Submit one copy to appropriate
District Office

☐ AMENDED REPORT

WELL LOCATION AND ACREAGE DEDICATION PLAT

¹ API Number 30-025-45590	² Pool Code 98180	³ Pool Name WC025 G09 S253309P; UPPER WOLFCAMP
⁴ Property Code 324978	⁵ Property Name DAUNTLESS 7 FED	⁶ Well Number #701H
⁷ GRID No. 7377	⁸ Operator Name EOG RESOURCES, INC.	⁹ Elevation 3473'

¹⁰Surface Location

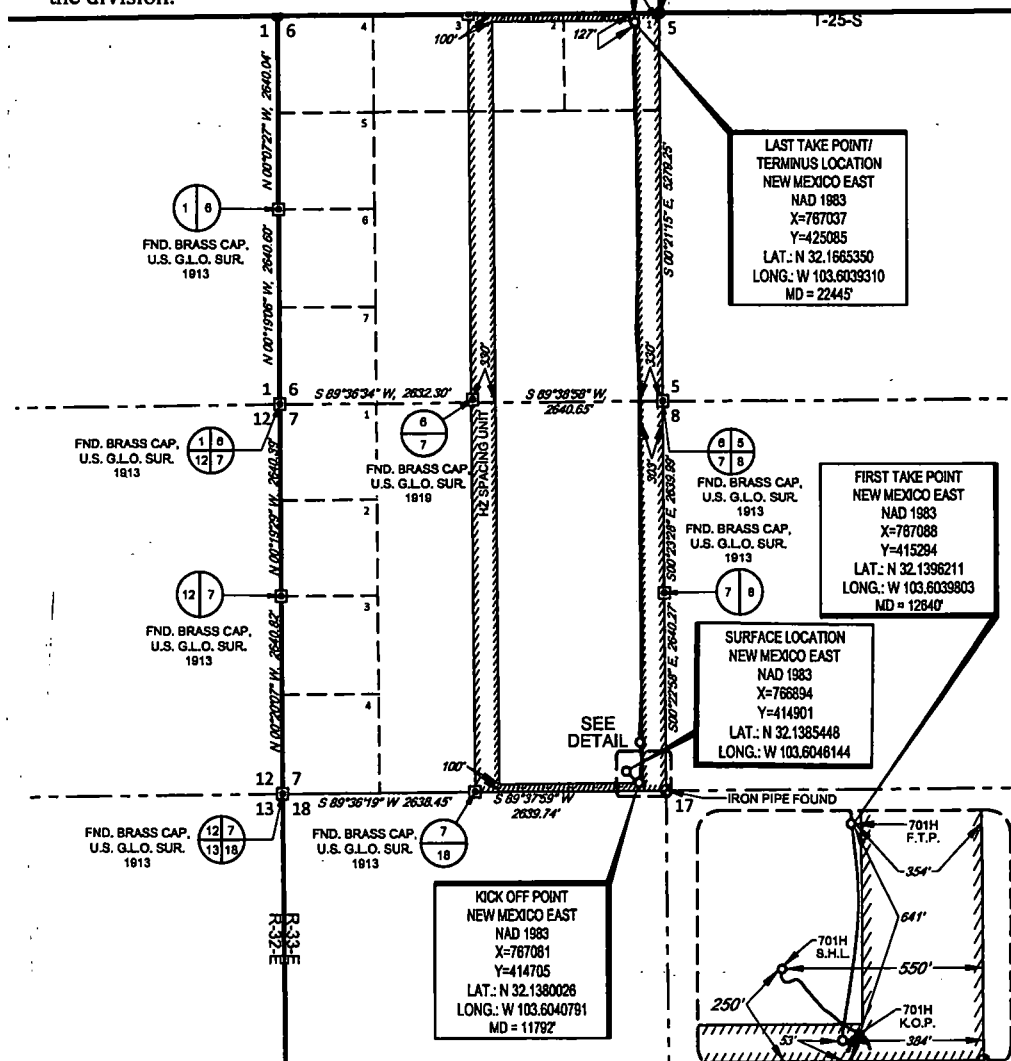
UL or lot no.	Section	Township	Range	Lot Idn	Feet from the	North/South line	Feet from the	East/West line	County
P	7	25-S	33-E	-	250'	SOUTH	550'	EAST	LEA

UL or lot no.	Section	Township	Range	Lot Idn	Feet from the	North/South line	Feet from the	East/West line	County
A	6	25-S	33-E	-	127'	NORTH	342'	EAST	LEA

¹¹ Dedicated Acres 640.00	¹² Joint or Infill	¹³ Consolidation Code	¹⁴ Order No.
---	-------------------------------	----------------------------------	-------------------------

No allowable will be assigned to this completion until the division.

s have been consolidated or a non-standard unit has been approved by



¹⁷OPERATOR CERTIFICATION

I hereby certify that the information contained herein is true and complete to the best of my knowledge and belief, and that this organization either owns a working interest or unleased mineral interest in the land including the proposed bottom hole location or has a right to drill this well at this location pursuant to a contract with an owner of such a mineral or working interest, or to a voluntary pooling agreement or a compulsory pooling order heretofore entered by the division.

Kay Maddox

11/04/2019

Signature

Date

KAY MADDOX

Printed Name

E-mail Address

¹⁸SURVEYOR CERTIFICATION

I hereby certify that the well location shown on this plat was plotted from field notes of actual surveys made by me or under my supervision, and that the same is true to the best of my belief.

12/19/2017

Date of Survey

Signature

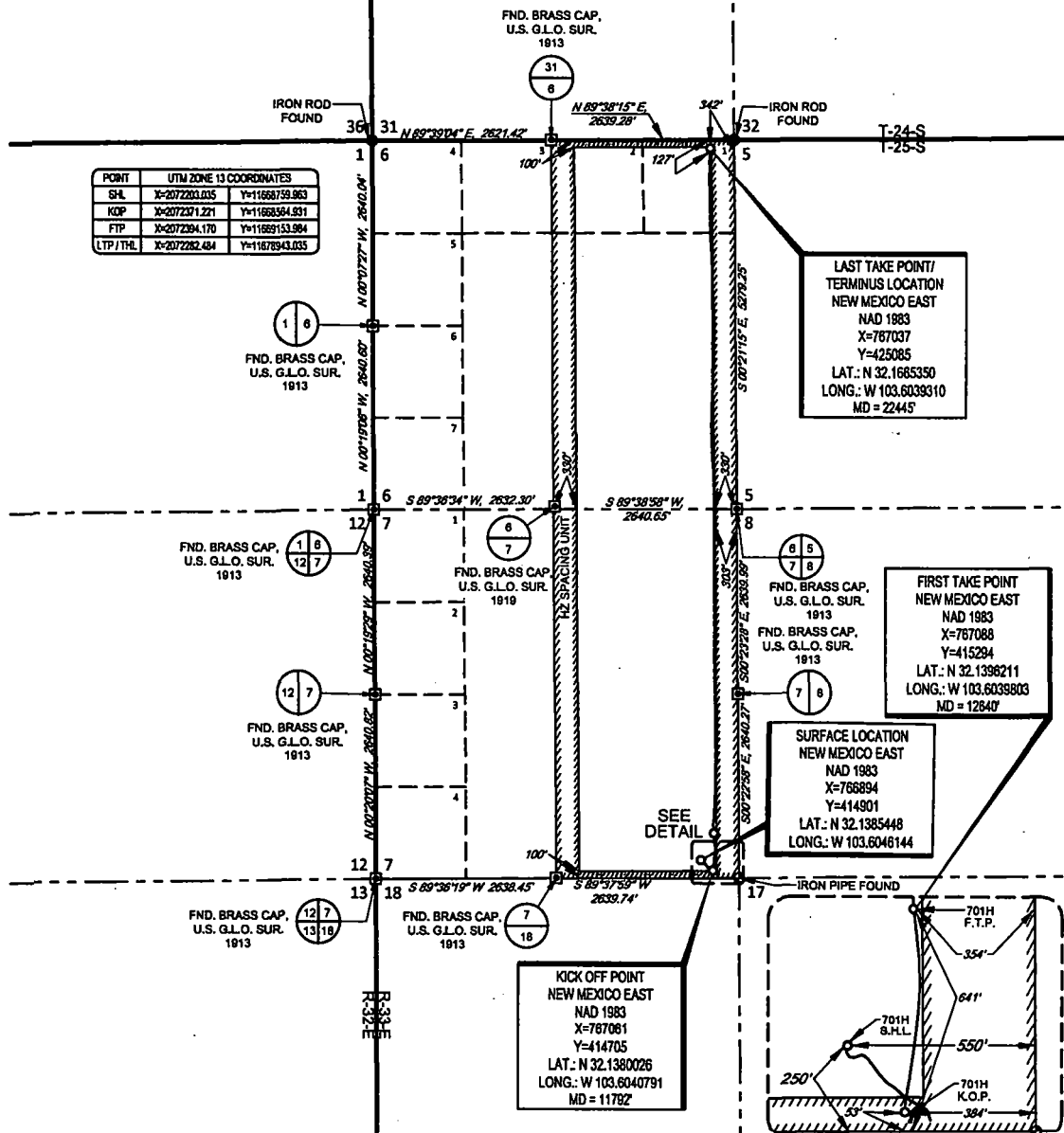
PROFESSIONAL SURVEYOR
NEW MEXICO
18329

Certificate Number

SCALE: 1" = 2000'

SECTION 7, TOWNSHIP 25-S, RANGE 33-E, N.M.P.M.
LEA COUNTY, NEW MEXICO

POINT	UTM ZONE 13 COORDINATES
SHL	X=2072201.035 Y=11668759.963
KOP	X=2072201.221 Y=11668564.931
FTP	X=2072204.170 Y=11669153.984
LTP / THL	X=2072282.484 Y=11678943.035

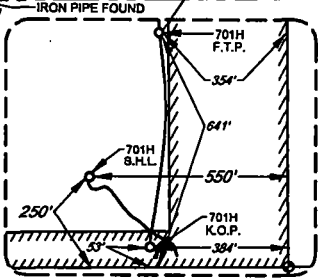


LAST TAKE POINT/
TERMINUS LOCATION
NEW MEXICO EAST
NAD 1983
X=767037
Y=425085
LAT.: N 32.1685350
LONG.: W 103.6039310
MD = 22445'

FIRST TAKE POINT
NEW MEXICO EAST
NAD 1983
X=767088
Y=415294
LAT.: N 32.1396211
LONG.: W 103.6039803
MD = 12840'

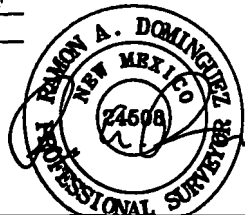
SURFACE LOCATION
NEW MEXICO EAST
NAD 1983
X=766894
Y=414901
LAT.: N 32.1385448
LONG.: W 103.6046144

KICK OFF POINT
NEW MEXICO EAST
NAD 1983
X=767081
Y=414705
LAT.: N 32.1380026
LONG.: W 103.6040791
MD = 11782'



LEASE NAME & WELL NO.: DAUNTLESS 7 FED C 701H
SECTION 7 TWP. 25-S RGE. 33-E SURVEY N.M.P.M.
COUNTY LEA STATE NM ELEVATION 3475'
DESCRIPTION 250' FSL & 550' FEL

TOPOGRAPHIC
LOYALTY INNOVATION LEGACY
1400 EVERMAN PARKWAY, Ste. 140 • FT. WORTH, TEXAS 76140
TELEPHONE: (817) 744-7512 • FAX: (817) 744-7554
TEXAS FIRM REGISTRATION NO. 10042504
WWW.TOPOGRAPHIC.COM



Ramon A. Dominguez, P.S. No. 24508
OCTOBER 21, 2019

egog resources, Inc.

DAUNTLESS 7 FED COM 701H AS-COMPLETE	REVISION:
DATE: 10/21/2019	
FILE: AD_DAUNTLESS_7_FED_701H	
DRAWN BY: JLS	
SHEET: 1 OF 1	

NOTES:
1. ORIGINAL DOCUMENT SIZE: 8.5" X 14"
2. ALL BEARINGS, DISTANCES, AND COORDINATE VALUES CONTAINED HEREIN ARE GRID BASED UPON THE NEW MEXICO COORDINATE SYSTEM, EAST ZONE, U.S. SURVEY FEET, NORTH AMERICAN DATUM 1983.
3. THIS WELL LOCATION SHOWN HEREON HAS BEEN SURVEYED ON THE GROUND UNDER MY SUPERVISION AND PREPARED ACCORDING TO THE EVIDENCE FOUND AT THE TIME OF SURVEY, AND DATA PROVIDED BY EOG RESOURCES, INC. THIS CERTIFICATION IS MADE AND LIMITED TO THOSE PERSONS OR ENTITIES SHOWN ON THE FACE OF THIS PLAT AND IS NON-TRANSFERABLE. THIS SURVEY IS CERTIFIED FOR THIS TRANSACTION ONLY.