

District I  
1625 N. French Dr., Hobbs, NM 88240  
Phone: (575) 393-6161 Fax: (575) 393-0720  
District II  
811 S. First St., Artesia, NM 88210  
Phone: (575) 748-1283 Fax: (575) 748-9720  
District III  
1000 Rio Brazos Road, Aztec, NM 87410  
Phone: (505) 334-6178 Fax: (505) 334-6170  
District IV  
1220 S. St. Francis Dr., Santa Fe, NM 87505  
Phone: (505) 476-3460 Fax: (505) 476-3462

State of New Mexico  
Energy, Minerals & Natural Resources  
Department  
OIL CONSERVATION DIVISION  
1220 South St. Francis Dr.  
Santa Fe, NM 87505

**HOBBS OCD**  
**NOV 18 2019**  
**RECEIVED**

FORM C-102  
Revised August 1, 2011  
Submit one copy to appropriate  
District Office

☐ AMENDED REPORT

**WELL LOCATION AND ACREAGE DEDICATION PLAT**

<sup>1</sup> API Number 30-025-45591		<sup>2</sup> Pool Code 98180	<sup>3</sup> Pool Name WC025 G09 S253309P; UPPER WOLFCAMP
<sup>4</sup> Property Code 324978	<sup>5</sup> Property Name DAUNTLESS 7 FED		<sup>6</sup> Well Number 722H
<sup>7</sup> GRID No. 7377	<sup>8</sup> Operator Name EOG RESOURCES, INC.		<sup>9</sup> Elevation 3474'

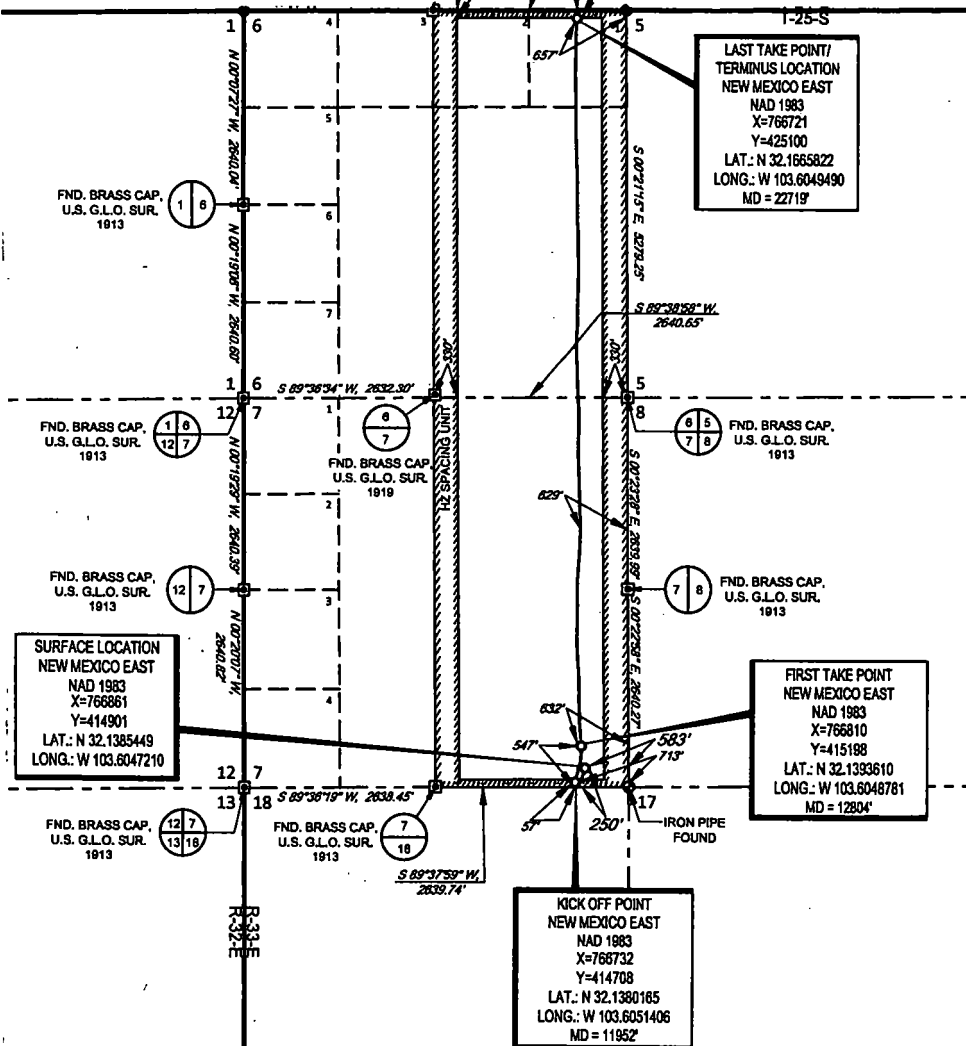
<sup>10</sup>Surface Location

UL or lot no.	Section	Township	Range	Lot Idn	Feet from the	North/South line	Feet from the	East/West line	County
P	7	25-S	33-E	-	250'	SOUTH	583'	EAST	LEA

UL or lot no.	Section	Township	Range	Lot Idn	Feet from the	North/South line	Feet from the	East/West line	County
A	6	25-S	33-E	-	110'	NORTH	657'	EAST	LEA

<sup>12</sup> Dedicated Acres 640.00	<sup>13</sup> Joint or Infill	<sup>14</sup> Consolidation Code	<sup>15</sup> Order No.
---	-------------------------------	----------------------------------	-------------------------

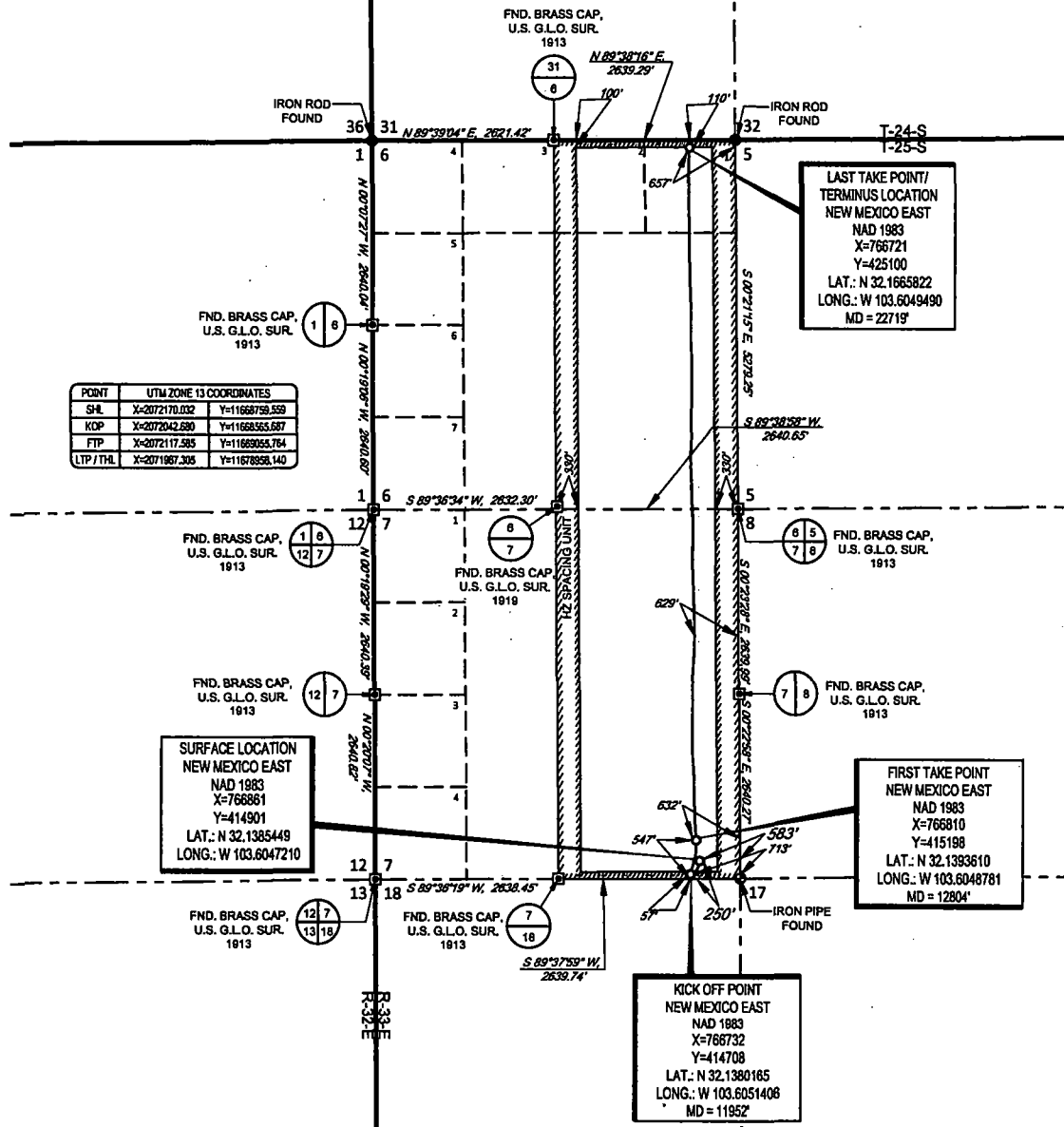
No allowable will be assigned to this completion until all interests have been consolidated or a non-standard unit has been approved by the division.



<b><sup>17</sup>OPERATOR CERTIFICATION</b>	
I hereby certify that the information contained herein is true and complete to the best of my knowledge and belief, and that this organization either owns a working interest or unleased mineral interest in the land including the proposed bottom hole location or has a right to drill this well at this location pursuant to a contract with an owner of such a mineral or working interest, or to a voluntary pooling agreement or a compulsory pooling order heretofore entered by the division.	
<u>Kay Maddox</u> Signature	11/04/2019 Date
<u>KAY MADDOX</u> Printed Name	
E-mail Address	
<b><sup>18</sup>SURVEYOR CERTIFICATION</b>	
I hereby certify that the well location shown on this plat was plotted from field notes of actual surveys made by me or under my supervision, and that the same is true to the best of my belief.	
<div style="text-align: center;"> </div>	
Date of Survey: 12/19/2017 Signature of Professional Surveyor: <u>Michael B. Brown</u> Certificate Number	

SCALE: 1" = 2000'  
0' 1000' 2000'

SECTIONS 6 & 7, TOWNSHIP 25-S, RANGE 33-E, N.M.P.M.  
LEA COUNTY, NEW MEXICO



LEASE NAME & WELL NO.: DAUNTLESS 7 FED #722H  
SECTION 7 TWP 25-S RGE 33-E SURVEY N.M.P.M.  
COUNTY LEA STATE NM ELEVATION 3475'  
DESCRIPTION 250' FSL & 583' FEL

**TOPOGRAPHIC**  
LOYALTY INNOVATION LEGACY  
1400 EVERMAN PARKWAY, Ste. 148 • FT. WORTH, TEXAS 76140  
TELEPHONE: (817) 744-7512 • FAX: (817) 744-7554  
TEXAS FIRM REGISTRATION NO. 10042504  
WWW.TOPOGRAPHIC.COM



Ramon A. Dominguez, P.S. No. 24508  
OCTOBER 17, 2019

**eoog resources, inc.**

DAUNTLESS 7 FED #722H AS-COMplete	REVISION:
DATE: 10/17/2019	
FILE:AD_DAUNTLESS_7_FED_722H	
DRAWN BY: H.B.	
SHEET: 1 OF 1	

NOTES:  
1. ORIGINAL DOCUMENT SIZE: 8.5" X 14"  
2. ALL BEARINGS, DISTANCES, AND COORDINATE VALUES CONTAINED HEREIN ARE GRID BASED UPON THE NEW MEXICO COORDINATE SYSTEM, EAST ZONE, U.S. SURVEY FEET, NORTH AMERICAN DATUM 1983.  
3. THIS WELL LOCATION SHOWN HEREON HAS BEEN SURVEYED ON THE GROUND UNDER MY SUPERVISION AND PREPARED ACCORDING TO THE EVIDENCE FOUND AT THE TIME OF SURVEY, AND DATA PROVIDED BY EOG RESOURCES, INC. THIS CERTIFICATION IS MADE AND LIMITED TO THOSE PERSONS OR ENTITIES SHOWN ON THE FACE OF THIS PLAT AND IS NON-TRANSFERABLE. THIS SURVEY IS CERTIFIED FOR THIS TRANSACTION ONLY.