

District I  
1625 N. French Dr., Hobbs, NM 88240  
Phone: (575) 393-6161 Fax: (575) 393-0720  
District II  
811 S. First St., Artesia, NM 88210  
Phone: (575) 748-1283 Fax: (575) 748-9720  
District III  
1000 Rio Brazos Road, Aztec, NM 87410  
Phone: (505) 334-6178 Fax: (505) 334-6170  
District IV  
1220 S. St. Francis Dr., Santa Fe, NM 87505  
Phone: (505) 476-3460 Fax: (505) 476-3462

State of New Mexico  
Energy, Minerals & Natural Resources  
Department  
OIL CONSERVATION DIVISION  
1220 South St. Francis Dr.  
Santa Fe, NM 87505

FORM C-102

Revised August 1, 2011

Submit one copy to appropriate

District Office

☐ AMENDED REPORT

HOBBS OCD  
NOV 18 2019  
RECEIVED

WELL LOCATION AND ACREAGE DEDICATION PLAT

<sup>1</sup> API Number 30-025-45592		<sup>2</sup> Pool Code 98180		<sup>3</sup> Pool Name WC025 G09 S253309P; UPPER WOLFCAMP	
<sup>4</sup> Property Code 324978		<sup>5</sup> Property Name DAUNTLESS 7 FED			<sup>6</sup> Well Number #703H
<sup>7</sup> GRID No. 7377		<sup>8</sup> Operator Name EOG RESOURCES, INC.			<sup>9</sup> Elevation 3474'

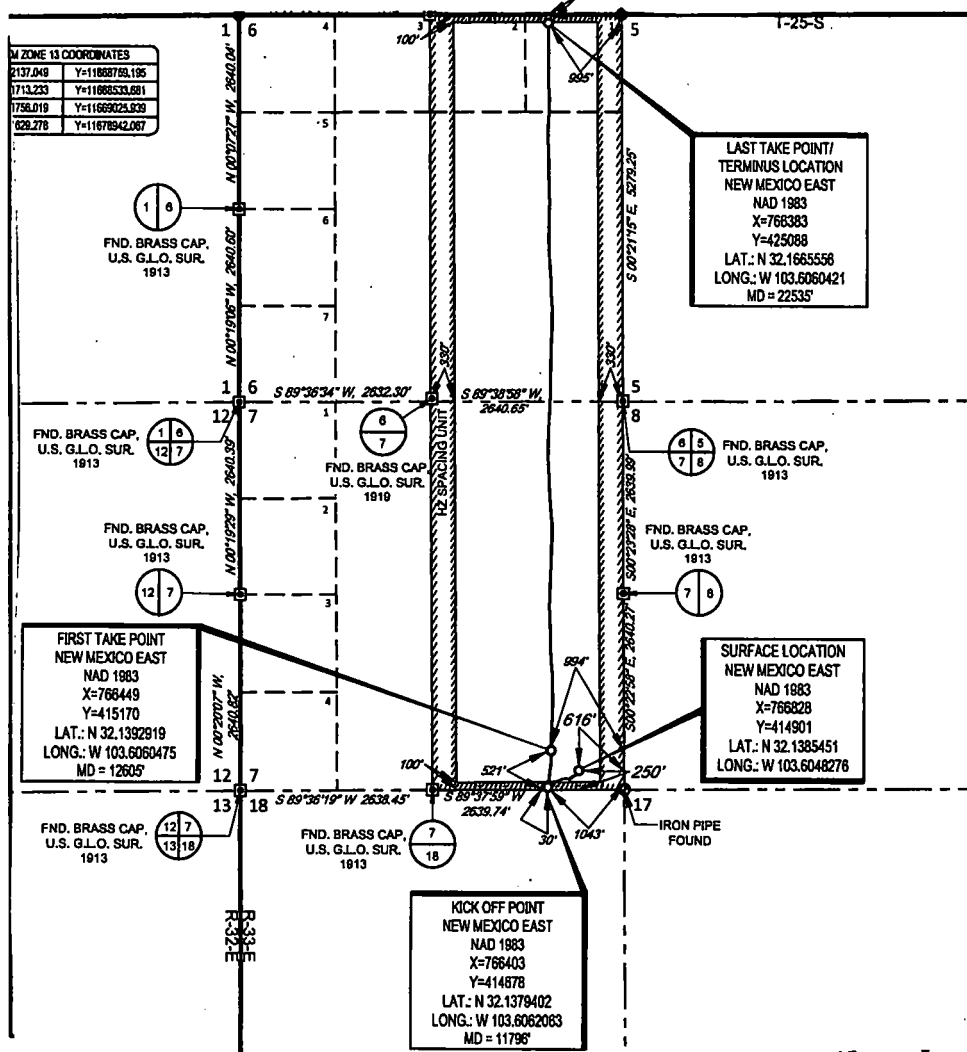
<sup>10</sup>Surface Location

UL or lot no. P	Section 7	Township 25-S	Range 33-E	Lot Idn -	Feet from the 250'	North/South line SOUTH	Feet from the 616'	East/West line EAST	County LEA
--------------------	--------------	------------------	---------------	--------------	-----------------------	---------------------------	-----------------------	------------------------	---------------

UL or lot no. A	Section 6	Township 25-S	Range 33-E	Lot Idn -	Feet from the 120'	North/South line NORTH	Feet from the 995'	East/West line EAST	County LEA
--------------------	--------------	------------------	---------------	--------------	-----------------------	---------------------------	-----------------------	------------------------	---------------

<sup>12</sup> Dedicated Acres 640.00	<sup>13</sup> Joint or Infill	<sup>14</sup> Consolidation Code	<sup>15</sup> Order No.
---	-------------------------------	----------------------------------	-------------------------

No allowable will be assigned to this completion until all interests have been consolidated or a non-standard unit has been approved by the division.



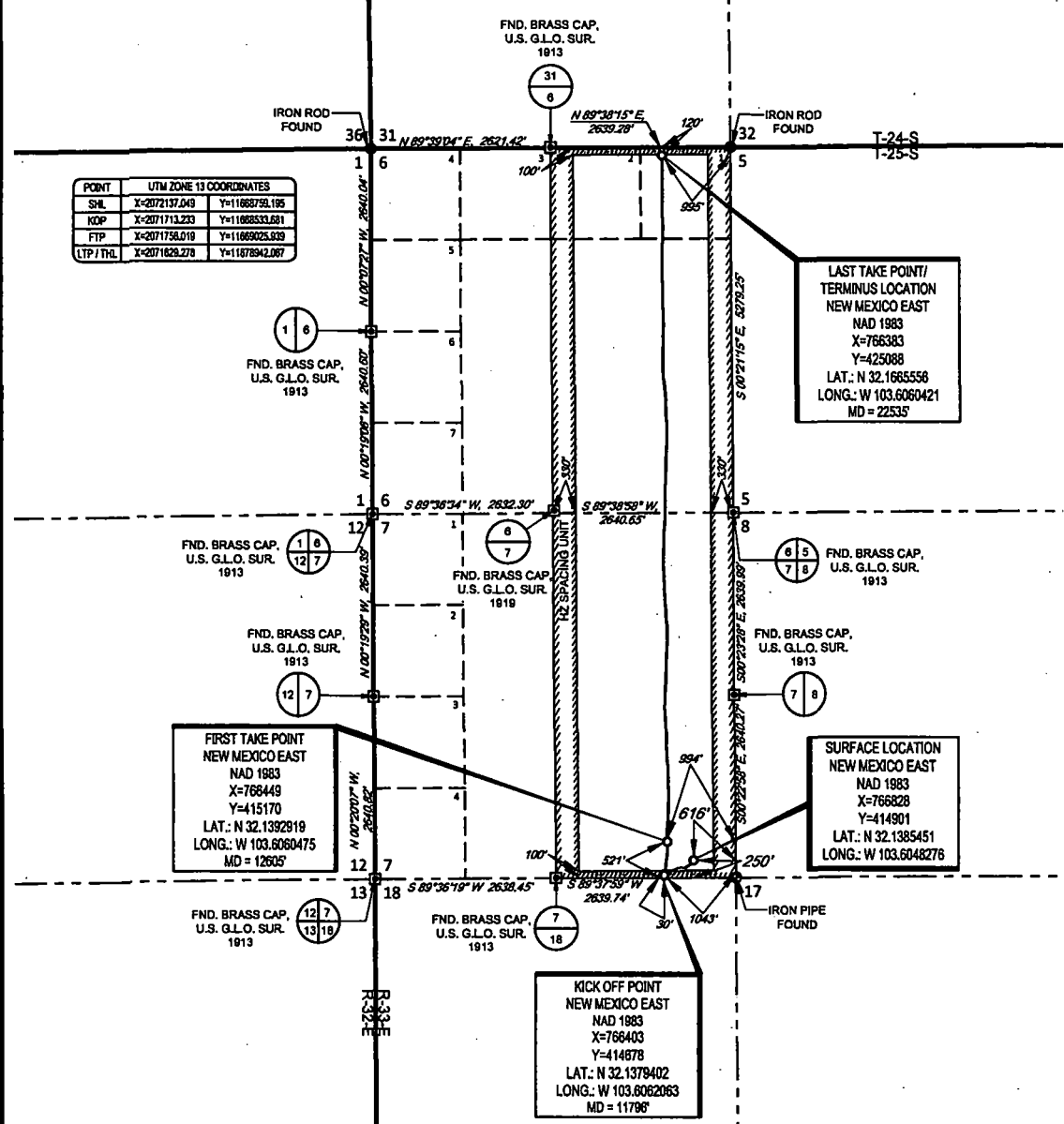
<b>17 OPERATOR CERTIFICATION</b>	
I hereby certify that the information contained herein is true and complete to the best of my knowledge and belief, and that this organization either owns a working interest or unleased mineral interest in the land including the proposed bottom hole location or has a right to drill this well at this location pursuant to a contract with an owner of such a mineral or working interest, or to a voluntary pooling agreement or a compulsory pooling order heretofore entered by the division.	
Kay Maddox	11/04/2019
Signature	Date
KAY MADDOX	
Printed Name	
E-mail Address	
<b>18 SURVEYOR CERTIFICATION</b>	
I hereby certify that the well location shown on this plat was plotted from field notes of actual surveys made by me or under my supervision, and that the same is true to the best of my belief.	
12/19/2017	
Date of Survey	
Signature of Professional Surveyor	
MICHAEL BROWN	
NEW MEXICO	
18329	
PROFESSIONAL SURVEYOR	
Certificate Number	

SCALE: 1" = 2000'  
0 1000' 2000'

SECTION 7, TOWNSHIP 25-S, RANGE 33-E, N.M.P.M.  
LEA COUNTY, NEW MEXICO

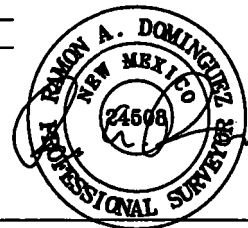


POINT	UTM ZONE 13 COORDINATES
SHL	X=2072137.049 Y=11865759.195
KOP	X=2071713.233 Y=11865333.681
FTP	X=2071750.019 Y=11865025.839
LTP / THL	X=2071629.278 Y=11878942.087



LEASE NAME & WELL NO.: DAUNTLESS 7 FED COM 703H  
 SECTION 7 TWP 25-S RGE 33-E SURVEY N.M.P.M.  
 COUNTY LEA STATE NM ELEVATION 3475'  
 DESCRIPTION 250' FSL & 616' FEL

**TOPOGRAPHIC**  
 LOYALTY INNOVATION LEGACY  
 1400 EVERMAN PARKWAY, Ste. 140 • FT. WORTH, TEXAS 76140  
 TELEPHONE: (817) 744-7512 • FAX (817) 744-7554  
 TEXAS FIRM REGISTRATION NO. 10042504  
 WWW.TOPOGRAPHIC.COM



Ramon A. Dominguez, P.S. No. 24508  
 OCTOBER 21, 2019

**geog resources, Inc.**

DAUNTLESS 7 FED COM 703H AS-COMplete	REVISION:
DATE: 10/21/2019	
FILE: AD_DAUNTLESS_7_FED_703H	
DRAWN BY: JLS	
SHEET: 1 OF 1	

- NOTES:
1. ORIGINAL DOCUMENT SIZE: 8.5" X 14"
  2. ALL BEARINGS, DISTANCES, AND COORDINATE VALUES CONTAINED HEREIN ARE GRID BASED UPON THE NEW MEXICO COORDINATE SYSTEM, EAST ZONE, U.S. SURVEY FEET, NORTH AMERICAN DATUM 1983.
  3. THIS WELL LOCATION SHOWN HEREON HAS BEEN SURVEYED ON THE GROUND UNDER MY SUPERVISION AND PREPARED ACCORDING TO THE EVIDENCE FOUND AT THE TIME OF SURVEY, AND DATA PROVIDED BY GEO RESOURCES, INC. THIS CERTIFICATION IS MADE AND LIMITED TO THOSE PERSONS OR ENTITIES SHOWN ON THE FACE OF THIS PLAT AND IS NON-TRANSFERABLE. THIS SURVEY IS CERTIFIED FOR THIS TRANSACTION ONLY.