

District I
1625 N. French Dr., Hobbs, NM 88240
Phone: (575) 393-6161 Fax: (575) 393-0720
District II
811 S. First St., Artesia, NM 88210
Phone: (575) 748-1283 Fax: (575) 748-9720
District III
1000 Rio Brazos Road, Aztec, NM 87410
Phone: (505) 334-6178 Fax: (505) 334-6170
District IV
1220 S. St. Francis Dr., Santa Fe, NM 87505
Phone: (505) 476-3460 Fax: (505) 476-3462

State of New Mexico
Energy, Minerals & Natural Resources
Department
OIL CONSERVATION DIVISION
1220 South St. Francis Dr.
Santa Fe, NM 87505

HOBBS OCD
NOV 20 2019
RECEIVED

FORM C-102
Revised August 1, 2011
Submit one copy to appropriate
District Office

☒ AMENDED REPORT

WELL LOCATION AND ACREAGE DEDICATION PLAT

¹ API Number 30-025-46033	² Pool Code 97964	³ Pool Name WC025 G07 S243225C; LOWER BONE SPRING
⁴ Property Code 325728	⁵ Property Name ADDER 31 STATE	⁶ Well Number #505H
⁷ OGRID No. 7377	⁸ Operator Name EOG RESOURCES, INC.	⁹ Elevation 3501'

¹⁰Surface Location

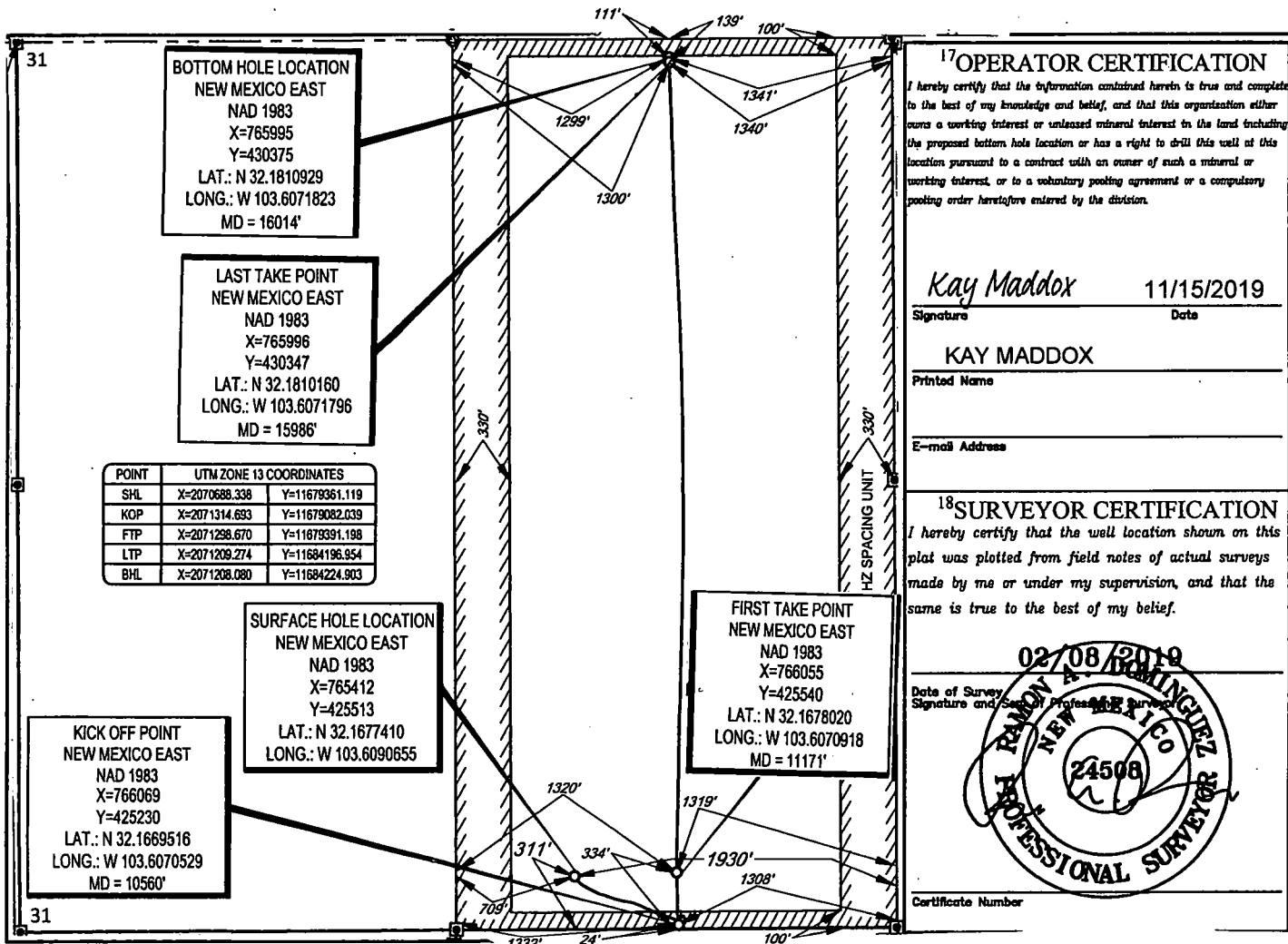
UL or lot no.	Section	Township	Range	Lot Idn	Feet from the	North/South line	Feet from the	East/West line	County
0	31	24-S	33-E	-0	311'	SOUTH	1930'	EAST	LEA

¹¹Bottom Hole Location If Different From Surface

UL or lot no.	Section	Township	Range	Lot Idn	Feet from the	North/South line	Feet from the	East/West line	County
B	31	24-S	33-E	-B	111'	NORTH	1341'	EAST	LEA

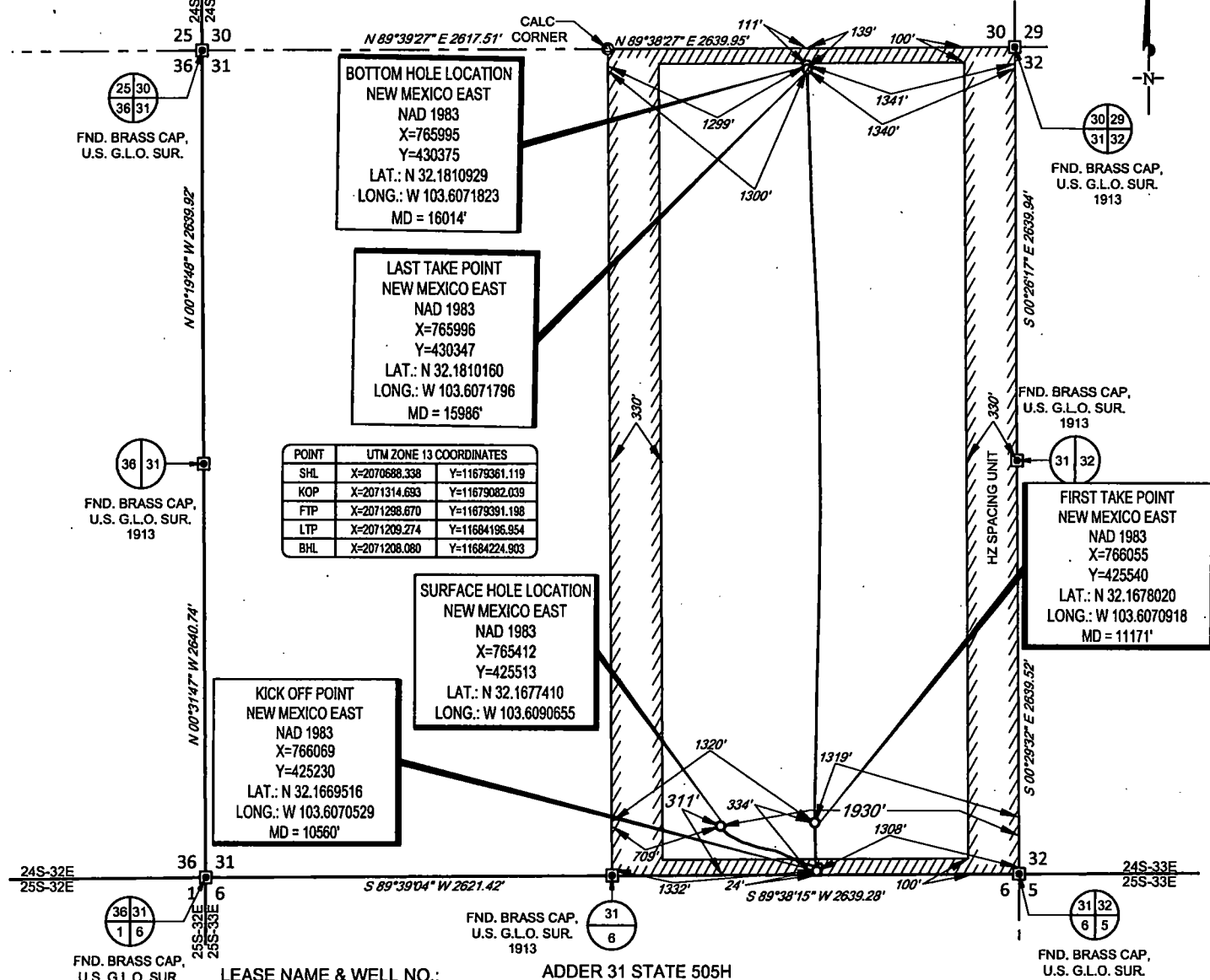
¹² Dedicated Acres 320	¹³ Joint or Infill	¹⁴ Consolidation Code	¹⁵ Order No.
---	-------------------------------	----------------------------------	-------------------------

No allowable will be assigned to this completion until all interests have been consolidated or a non-standard unit has been approved by the division.



SECTION 31, TOWNSHIP 24-S, RANGE 33-E, N.M.P.M.
LEA COUNTY, NEW MEXICO

SCALE: 1" = 1000'

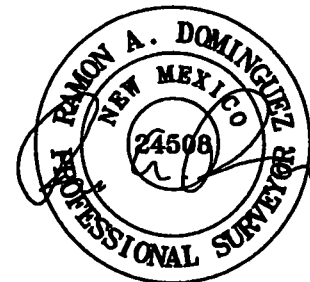


LEASE NAME & WELL NO.: ADDER 31 STATE 505H
SECTION 31 TWP 24-S RGE 33-E SURVEY N.M.P.M.
COUNTY LEA STATE NM ELEVATION 3502'
DESCRIPTION 311' FSL & 1930' FEL



TOPOGRAPHIC
LOYALTY INNOVATION LEGACY

1400 EVERMAN PARKWAY, Ste. 148 • FT. WORTH, TEXAS 76140
TELEPHONE: (817) 744-7512 • FAX (817) 744-7554
2903 NORTH BIG SPRING • MIDLAND, TEXAS 79705
TELEPHONE: (432) 682-1653 OR (800) 767-1653 • FAX (432) 682-1743
WWW.TOPOGRAPHIC.COM



Ramon A. Dominguez, P.S. No. 24508



ADDER 31 STATE 505H AS-COMPLETED	REVISION:	NOTES: 1. ORIGINAL DOCUMENT SIZE: 8.5" X 11" 2. ALL BEARINGS, DISTANCES, AND COORDINATE VALUES CONTAINED HEREIN ARE GRID BASED UPON THE NEW MEXICO COORDINATE SYSTEM OF 1983, EAST ZONE, U.S. SURVEY FEET. 3. THIS WELL LOCATION SHOWN HEREON HAS BEEN SURVEYED ON THE GROUND UNDER MY SUPERVISION AND PREPARED ACCORDING TO THE EVIDENCE FOUND AT THE TIME OF SURVEY, AND DATA PROVIDED BY EOG RESOURCES, INC. THIS CERTIFICATION IS MADE AND LIMITED TO THOSE PERSONS OR ENTITIES SHOWN ON THE FACE OF THIS PLAT AND IS NON-TRANSFERABLE. THIS SURVEY IS CERTIFIED FOR THIS TRANSACTION ONLY.
DATE: 10/29/2019		
FILE:AD_ADDER_31_STATE_505H		
DRAWN BY: TRG		
SHEET: 1 OF 1		

Intent ☐ As Drilled ☒ XXX

HOBBS OCD
NOV 20 2019
RECEIVED

API # 30-025-46033			
Operator Name: EOG RESOURCES, INC		Property Name: ADDER 31 STATE	Well Number 505H

Kick Off Point (KOP)

UL O	Section 31	Township 24S	Range 33E	Lot	Feet 24	From N/S SOUTH	Feet 1308	From E/W EAST	County LEA
Latitude 32.1669516					Longitude 103.6070529			NAD 1983	

First Take Point (FTP)

UL B	Section 31	Township 24S	Range 33E	Lot	Feet 334	From N/S SOUTH	Feet 1319	From E/W EAST	County LEA
Latitude 32.1678020					Longitude 103.6070918			NAD 1983	

Last Take Point (LTP)

UL B	Section 31	Township 24S	Range 33E	Lot	Feet 139	From N/S NORTH	Feet 1340	From E/W EAST	County LEA
Latitude 32.1810160					Longitude 103.6071796			NAD 1983	

Is this well the defining well for the Horizontal Spacing Unit? ☒ NO

Is this well an infill well? ☐ YES

If infill is yes please provide API if available, Operator Name and well number for Defining well for Horizontal Spacing Unit.

API # 30-025-46032			
Operator Name: EOG RESOURCES, INC		Property Name: ADDER 31 STATE	Well Number 504H

KZ 06/29/2018