

District I
1625 N. French Dr., Hobbs, NM 88240
Phone: (575) 393-6161 Fax: (575) 393-0720
District II
811 S. First St., Artesia, NM 88210
Phone: (575) 748-1283 Fax: (575) 748-9720
District III
1000 Rio Brazos Road, Aztec, NM 87410
Phone: (505) 334-6178 Fax: (505) 334-6170
District IV
1220 S. St. Francis Dr., Santa Fe, NM 87505
Phone: (505) 476-3460 Fax: (505) 476-3462

State of New Mexico
Energy, Minerals & Natural Resources
Department
OIL CONSERVATION DIVISION
1220 South St. Francis Dr.
Santa Fe, NM 87505

FORM C-102

Revised August 1, 2011

Submit one copy to appropriate

District Office

☒ AMENDED REPORT

HOBBS OCD
NOV 20 2019
RECEIVED

WELL LOCATION AND ACREAGE DEDICATION PLAT

¹ API Number 30-025-46037	² Pool Code 97964	³ Pool Name WC025 G07 S243225C; LOWER BONE SPRING
⁴ Property Code 325730	⁵ Property Name TAIPAN 31 STATE	⁶ Well Number #502H
⁷ OGRID No. 7377	⁸ Operator Name EOG RESOURCES, INC.	⁹ Elevation 3514'

¹⁰Surface Location

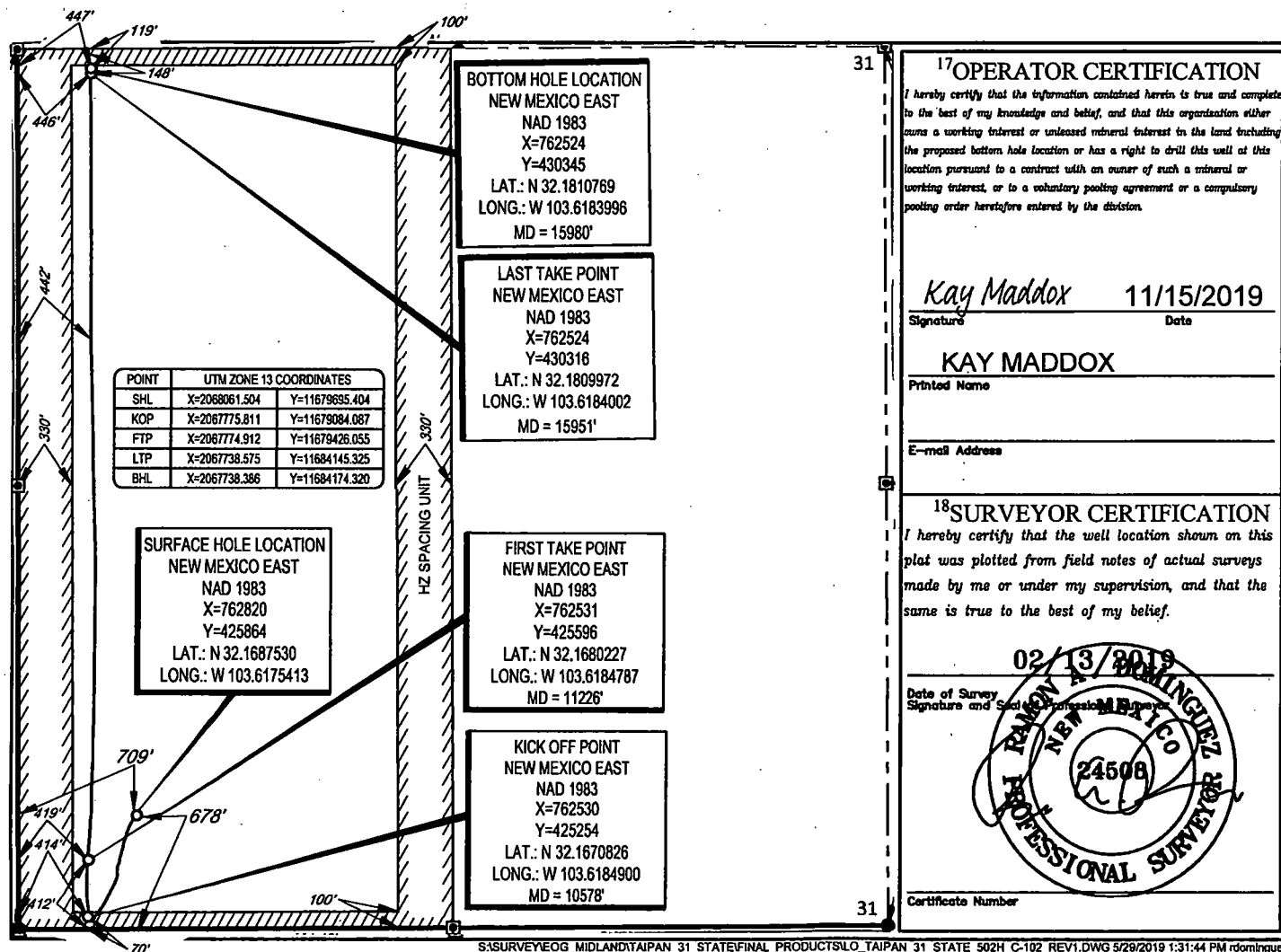
UL or lot no.	Section	Township	Range	Lot Idn	Feet from the	North/South line	Feet from the	East/West line	County
M	31	24-S	33-E	-4	678'	SOUTH	709'	WEST	LEA

¹¹Bottom Hole Location If Different From Surface

UL or lot no.	Section	Township	Range	Lot Idn	Feet from the	North/South line	Feet from the	East/West line	County
D	31	24-S	33-E	-1	119'	NORTH	447'	WEST	LEA

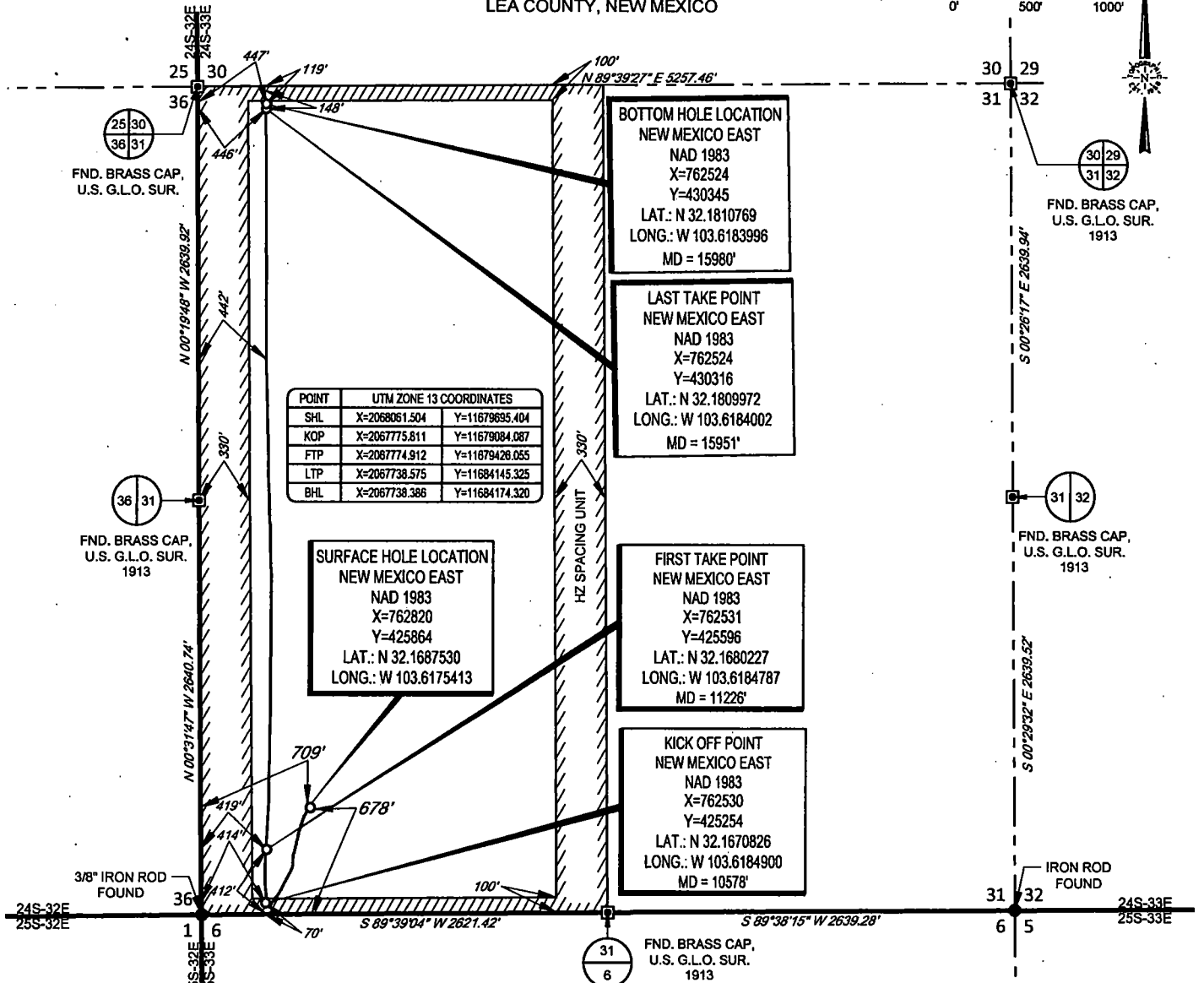
¹² Dedicated Acres 318	¹³ Joint or Infill	¹⁴ Consolidation Code	¹⁵ Order No.
---	-------------------------------	----------------------------------	-------------------------

No allowable will be assigned to this completion until all interests have been consolidated or a non-standard unit has been approved by the division.



SECTION 31, TOWNSHIP 24-S, RANGE 33-E, N.M.P.M.
LEA COUNTY, NEW MEXICO

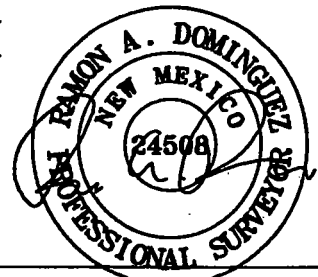
SCALE: 1" = 1000'



LEASE NAME & WELL NO.: TAIPAN 31 STATE #502H
SECTION 31 TWP 24-S RGE 33-E SURVEY N.M.P.M.
COUNTY LEA STATE NM ELEVATION 3514'
DESCRIPTION 678' FSL & 709' FWL



1400 EVERMAN PARKWAY, Ste. 148 • FT. WORTH, TEXAS 76140
TELEPHONE: (817) 744-7512 • FAX (817) 744-7554
2803 NORTH BIG SPRING • MIDLAND, TEXAS 79705
TELEPHONE: (432) 682-1653 OR (800) 767-1653 • FAX (432) 682-1743
WWW.TOPOGRAPHIC.COM



Ramon A. Dominguez, P.S. No. 24508
AUGUST 21, 2019



TAIPAN 31 STATE #502H AS-COMPLETED AS-DRILLED	REVISION:
DATE: 10/30/2019	
FILE: AD_TAIPAN_31_STATE_502H	
DRAWN BY: TRG	
SHEET: 1 OF 1	

- NOTES:
1. ORIGINAL DOCUMENT SIZE: 8.5" X 11"
 2. ALL BEARINGS, DISTANCES, AND COORDINATE VALUES CONTAINED HEREIN ARE GRID BASED UPON THE NEW MEXICO COORDINATE SYSTEM OF 1983, EAST ZONE, U.S. SURVEY FEET.
 3. THIS WELL LOCATION SHOWN HEREON HAS BEEN SURVEYED ON THE GROUND UNDER MY SUPERVISION AND PREPARED ACCORDING TO THE EVIDENCE FOUND AT THE TIME OF SURVEY, AND DATA PROVIDED BY EOG RESOURCES, INC. THIS CERTIFICATION IS MADE AND LIMITED TO THOSE PERSONS OR ENTITIES SHOWN ON THE FACE OF THIS PLAT AND IS NON-TRANSFERABLE. THIS SURVEY IS CERTIFIED FOR THIS TRANSACTION ONLY.

Intent ☐ As Drilled ☒ XXX

HOBBS OCD

NOV 20 2019

RECEIVED

API # 30-025-46037		Operator Name: EOG RESOURCES, INC		Property Name: TAIPAN 31 STATE		Well Number 502H	
-----------------------	--	--------------------------------------	--	-----------------------------------	--	---------------------	--

Kick Off Point (KOP)

UL M	Section 31	Township 24S	Range 33E	Lot	Feet 70	From N/S SOUTH	Feet 414	From E/W WEST	County LEA
Latitude 32.1670826					Longitude 103.6184900			NAD 1983	

First Take Point (FTP)

UL M	Section 31	Township 24S	Range 33E	Lot	Feet 678	From N/S SOUTH	Feet 709	From E/W WEST	County LEA
Latitude 32.1680227					Longitude 103.6184787			NAD 1983	

Last Take Point (LTP)

UL D	Section 31	Township 24S	Range 33E	Lot	Feet 148	From N/S NORTH	Feet 446	From E/W WEST	County LEA
Latitude 32.1809972					Longitude 103.6184002			NAD 1983	

Is this well the defining well for the Horizontal Spacing Unit? ☐ NO

Is this well an infill well? ☐ YES

If infill is yes please provide API if available, Operator Name and well number for Defining well for Horizontal Spacing Unit.

API # 30-025-46099		Operator Name: EOG RESOURCES, INC		Property Name: TAIPAN 31 STATE		Well Number 503H	
-----------------------	--	--------------------------------------	--	-----------------------------------	--	---------------------	--

KZ 06/29/2018