

District I  
1625 N. French Dr., Hobbs, NM 88240  
Phone: (575) 393-6161 Fax: (575) 393-0720  
District II  
811 S. First St., Artesia, NM 88210  
Phone: (575) 748-1283 Fax: (575) 748-9720  
District III  
1000 Rio Brazos Road, Aztec, NM 87410  
Phone: (505) 334-6178 Fax: (505) 334-6170  
District IV  
1220 S. St. Francis Dr., Santa Fe, NM 87505  
Phone: (505) 476-3460 Fax: (505) 476-3462

State of New Mexico  
Energy, Minerals & Natural Resources  
Department  
OIL CONSERVATION DIVISION  
1220 South St. Francis Dr.  
Santa Fe, NM 87505

FORM C-102

Revised August 1, 2011

Submit one copy to appropriate  
District Office

☒ AMENDED REPORT

WELL LOCATION AND ACREAGE DEDICATION PLAT

<sup>1</sup> API Number 30-025-46099	<sup>2</sup> Pool Code 97964	<sup>3</sup> Pool Name WC025 G07 S243225C; LOWER BONE SPRING
<sup>4</sup> Property Code 325730	<sup>5</sup> Property Name TAIPAN 31 STATE	<sup>6</sup> Well Number #503H
<sup>7</sup> OGRID No. 7377	<sup>8</sup> Operator Name EOG RESOURCES, INC.	<sup>9</sup> Elevation 3515'

<sup>10</sup>Surface Location

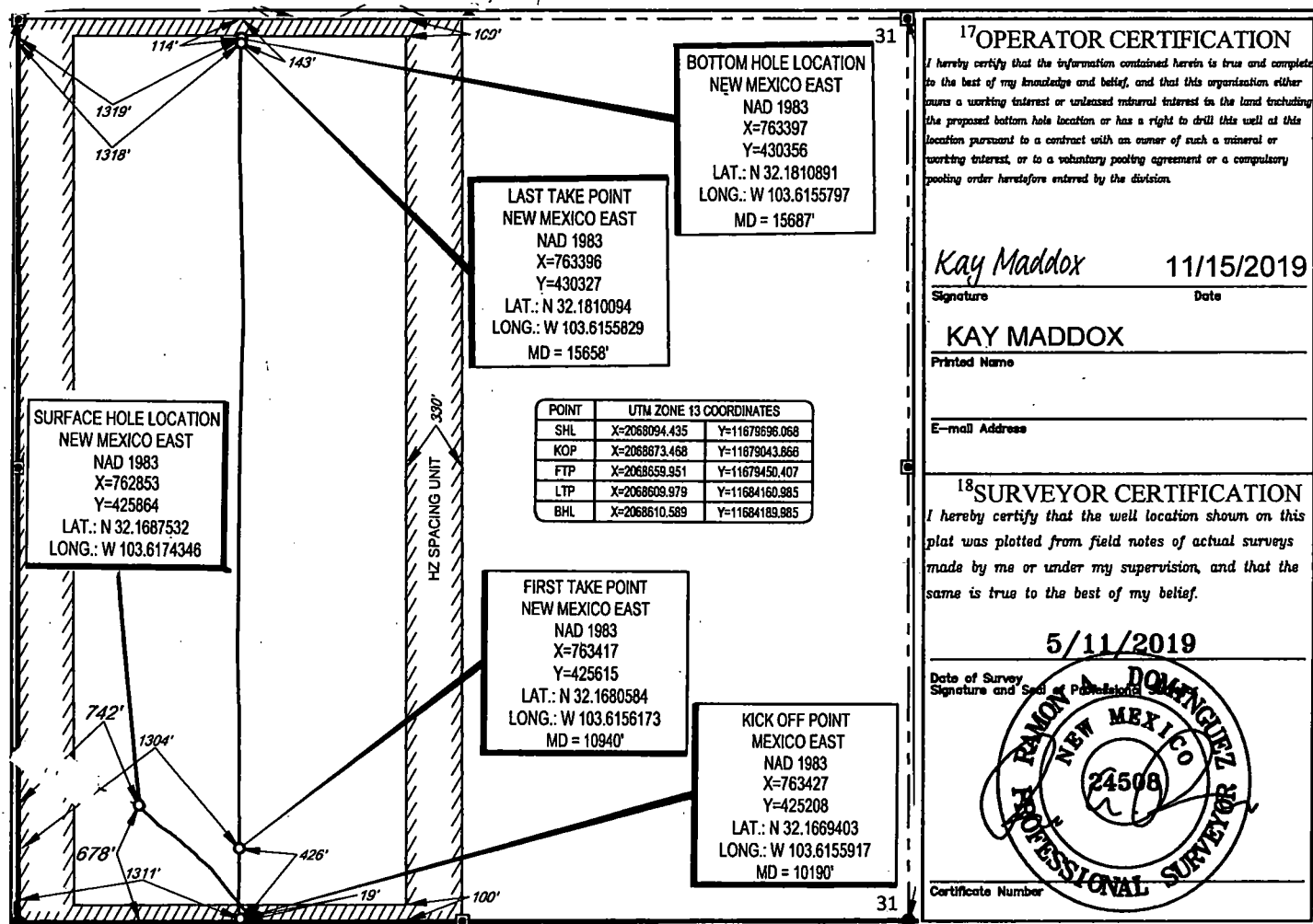
UL or lot no.	Section	Township	Range	Lot Idn	Feet from the	North/South line	Feet from the	East/West line	County
M	31	24-S	33-E	-4	678'	SOUTH	742'	WEST	LEA

<sup>11</sup>Bottom Hole Location If Different From Surface

UL or lot no.	Section	Township	Range	Lot Idn	Feet from the	North/South line	Feet from the	East/West line	County
D	31	24-S	33-E	-1	114'	NORTH	1319'	WEST	LEA

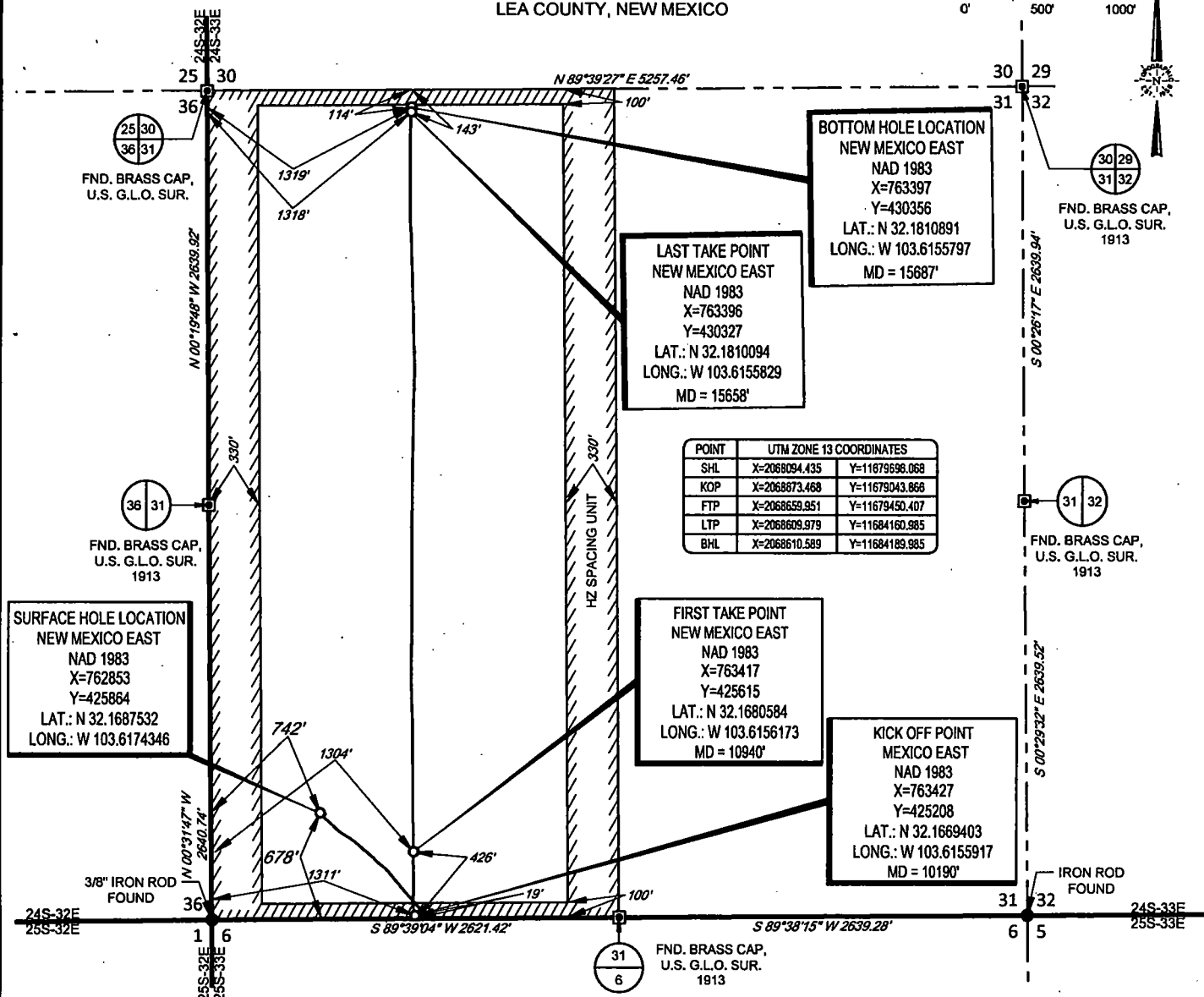
<sup>12</sup> Dedicated Acres 318	<sup>13</sup> Joint or Infill	<sup>14</sup> Consolidation Code	<sup>15</sup> Order No.
--------------------------------------	-------------------------------	----------------------------------	-------------------------

No allowable will be assigned to this completion until all interests have been consolidated or a non-standard unit has been approved by the division.



SECTION 31, TOWNSHIP 24-S, RANGE 33-E, N.M.P.M.  
LEA COUNTY, NEW MEXICO

SCALE: 1" = 1000'



**SURFACE HOLE LOCATION**  
NEW MEXICO EAST  
NAD 1983  
X=762853  
Y=425864  
LAT.: N 32.1687532  
LONG.: W 103.6174346

**BOTTOM HOLE LOCATION**  
NEW MEXICO EAST  
NAD 1983  
X=763397  
Y=430356  
LAT.: N 32.1810891  
LONG.: W 103.6155797  
MD = 15687'

**LAST TAKE POINT**  
NEW MEXICO EAST  
NAD 1983  
X=763396  
Y=430327  
LAT.: N 32.1810094  
LONG.: W 103.6155829  
MD = 15658'

**FIRST TAKE POINT**  
NEW MEXICO EAST  
NAD 1983  
X=763417  
Y=425615  
LAT.: N 32.1680584  
LONG.: W 103.6156173  
MD = 10940'

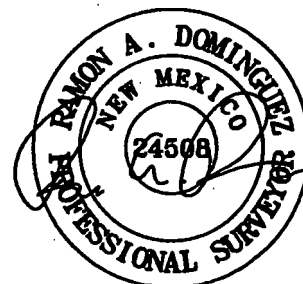
**KICK OFF POINT**  
MEXICO EAST  
NAD 1983  
X=763427  
Y=425208  
LAT.: N 32.1669403  
LONG.: W 103.6155917  
MD = 10190'

LEASE NAME & WELL NO.: TAIPAN 31 STATE #503H  
SECTION 31 TWP 24-S RGE 33-E SURVEY N.M.P.M.  
COUNTY LEA STATE NM ELEVATION 3515'  
DESCRIPTION 678' FSL & 742' FWL



**TOPOGRAPHIC**  
LOYALTY INNOVATION LEGACY

1400 EVERMAN PARKWAY, Ste. 148 • FT. WORTH, TEXAS 76140  
TELEPHONE: (817) 744-7512 • FAX (817) 744-7554  
2903 NORTH BIG SPRING • MIDLAND, TEXAS 79705  
TELEPHONE: (432) 882-1653 OR (800) 787-1653 • FAX (432) 882-1743  
WWW.TOPOGRAPHIC.COM



Ramon A. Dominguez, P.S. No. 24508

**Geog resources, Inc.**

TAIPAN 31 STATE #503H AS-COMPLETED	REVISION:
DATE: 10/30/2019	
FILE: AD_TAIPAN_31_STATE_503H	
DRAWN BY: TRG	
SHEET: 1 OF 1	

NOTES:

1. ORIGINAL DOCUMENT SIZE: 8.5" X 11"
2. ALL BEARINGS, DISTANCES, AND COORDINATE VALUES CONTAINED HEREIN ARE GRID BASED UPON THE NEW MEXICO COORDINATE SYSTEM OF 1983, EAST ZONE, U.S. SURVEY FEET.
3. THIS WELL LOCATION SHOWN HEREON HAS BEEN SURVEYED ON THE GROUND UNDER MY SUPERVISION AND PREPARED ACCORDING TO THE EVIDENCE FOUND AT THE TIME OF SURVEY, AND DATA PROVIDED BY EOG RESOURCES, INC. THIS CERTIFICATION IS MADE AND LIMITED TO THOSE PERSONS OR ENTITIES SHOWN ON THE FACE OF THIS PLAT AND IS NON-TRANSFERABLE. THIS SURVEY IS CERTIFIED FOR THIS TRANSACTION ONLY.

Intent ☐ As Drilled ☒ XXX

**HOBBS OCD**  
NOV 20 2019  
**RECEIVED**

API # 30-025-46099		Operator Name: EOG RESOURCES, INC		Property Name: TAIPAN 31 STATE		Well Number 503H	
-----------------------	--	--------------------------------------	--	-----------------------------------	--	---------------------	--

Kick Off Point (KOP)

UL M	Section 31	Township 24S	Range 33E	Lot	Feet 19	From N/S SOUTH	Feet 1311	From E/W WEST	County LEA
Latitude 32.1680584					Longitude 103.6156173				NAD 1983

First Take Point (FTP)

UL M	Section 31	Township 24S	Range 33E	Lot	Feet 426	From N/S SOUTH	Feet 1304	From E/W WEST	County LEA
Latitude 32.1680584					Longitude 103.6156173				NAD 1983

Last Take Point (LTP)

UL D	Section 31	Township 24S	Range 33E	Lot	Feet 143	From N/S NORTH	Feet 1318	From E/W WEST	County LEA
Latitude 32.1810094					Longitude 103.6155829				NAD 1983

Is this well the defining well for the Horizontal Spacing Unit? ☒ YES

Is this well an infill well? ☐ NO

If infill is yes please provide API if available, Operator Name and well number for Defining well for Horizontal Spacing Unit.

API #		Operator Name: EOG RESOURCES, INC		Property Name:		Well Number	
-------	--	--------------------------------------	--	----------------	--	-------------	--

KZ 06/29/2018