

District I  
1625 N. French Dr., Hobbs, NM 88240  
Phone: (575) 393-6161 Fax: (575) 393-0720  
District II  
811 S. First St., Artesia, NM 88210  
Phone: (575) 748-1283 Fax: (505) 748-9720  
District III  
1000 Rio Brazos Road, Aztec, NM 87410  
Phone: (505) 334-6178 Fax: (505) 334-6170  
District IV  
1220 S. St. Francis Dr., Santa Fe, NM 87505  
Phone: (505) 476-3460 Fax: (505) 476-3462

State of New Mexico  
Energy, Minerals & Natural Resources Department  
OIL CONSERVATION DIVISION  
1220 South St. Francis Dr.  
Santa Fe, NM 87505

Form C-102  
Revised August 1, 2011  
Submit one copy to appropriate  
District Office

☐ AMENDED REPORT

RECEIVED  
NOV 25 2019

WELL LOCATION AND ACREAGE DEDICATION PLAN

1 API Number <b>30-025-46021</b>		2 Pool Code <b>96553</b>		3 Pool Name <b>Ojo Chiso, Bone Spring</b>	
4 Property Code <b>325659</b>		5 Property Name <b>CARNE ASADA STATE COM</b>			
7 OGRID No. <b>372165</b>		8 Operator Name <b>CENTENNIAL RESOURCE PRODUCTION, LLC</b>			
		9 Well Number <b>501H</b>		9 Elevation <b>3636.1'</b>	

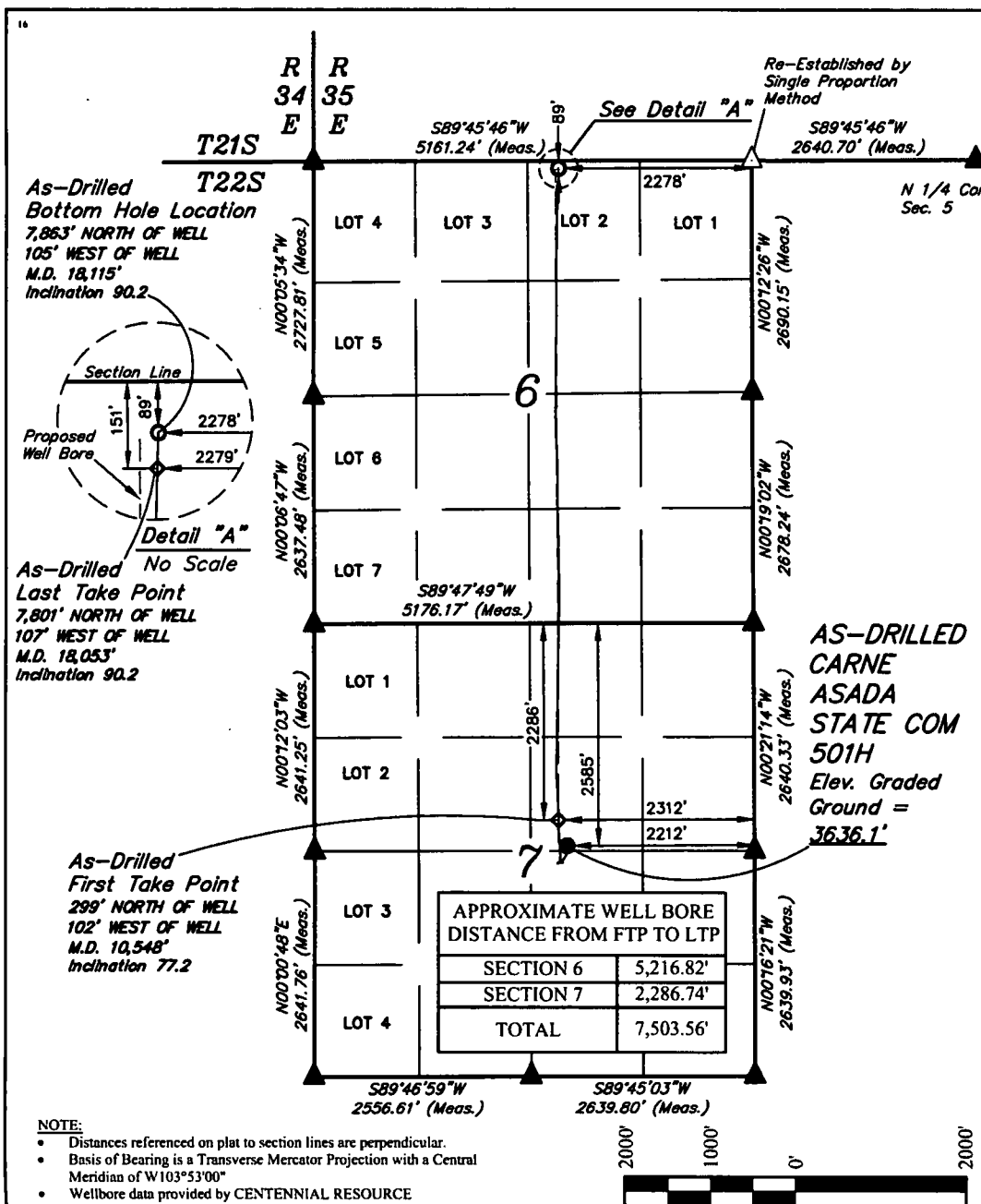
10 Surface Location

UL or lot no.	Section	Township	Range	Lot Idn	Feet from the	North/South line	Feet from the	East/West line	County
G	7	22S	35E		2585	NORTH	2212	EAST	LEA

11 Bottom Hole Location If Different From Surface

UL or lot no.	Section	Township	Range	Lot Idn	Feet from the	North/South line	Feet from the	East/West line	County
2	6	22S	35E		89	NORTH	2278	EAST	LEA
12 Dedicated Acres 242.45		13 Joint or Infill		14 Consolidation Code		15 Order No.			

No allowable will be assigned to this completion until all interests have been consolidated or a non-standard unit has been approved by the division.



17 OPERATOR  
CERTIFICATION

I hereby certify that the information contained herein is true and complete to the best of my knowledge and belief, and that this organization either owns a working interest or unleased mineral interest in the land including the proposed bottom hole location or has a right to drill this well at this location pursuant to a contract with an owner of such a mineral or working interest, or to a voluntary pooling agreement or a compulsory pooling order heretofore entered by the division.

Signature: K. Schlichting Date: 11/21/19

Printed Name: Kanicia Schlichting

E-mail Address: kanicia.schlichting@cdevinc.com

18 SURVEYOR  
CERTIFICATION

I hereby certify that the well location shown on this plat was plotted from field notes of actual surveys made by me or under my supervision, and that the same is true and correct to the best of my belief.

October 11, 2019

Date of Survey

Signature and Seal of Professional Surveyor:

PAUL BUCHELE  
NEW MEXICO  
23782  
11-08-19  
PROFESSIONAL SURVEYOR

Certificate Number:

NAD 83 (AS-DRILLED SHL) LATITUDE = 32°24'22.93" (32.406370°) LONGITUDE = 103°24'19.42" (103.405395°) STATE PLANE NAD 83 (N.M. EAST) Y: 512811.54' X: 827716.66' UTM, NAD 83 (ZONE 13) Y: 11767032.53' X: 2132407.62'	NAD 83 (AS-DRILLED FTP) LATITUDE = 32°24'25.89" (32.407193°) LONGITUDE = 103°24'20.59" (103.405623°) STATE PLANE NAD 83 (N.M. EAST) Y: 513110.10' X: 827613.86' UTM, NAD 83 (ZONE 13) Y: 11767330.41' X: 2132302.98'
NAD 83 (AS-DRILLED LTP) LATITUDE = 32°25'40.11" (32.427808°) LONGITUDE = 103°24'20.26" (103.405629°) STATE PLANE NAD 83 (N.M. EAST) Y: 520610.53' X: 827576.96' UTM, NAD 83 (ZONE 13) Y: 11774829.52' X: 2132219.29'	NAD 83 (AS-DRILLED BHL) LATITUDE = 32°25'40.72" (32.427979°) LONGITUDE = 103°24'20.24" (103.405623°) STATE PLANE NAD 83 (N.M. EAST) Y: 520672.52' X: 827578.27' UTM, NAD 83 (ZONE 13) Y: 11774891.50' X: 2132220.21'

SCALE  
DRAWN BY: R.J. 11-08-19

● = AS-DRILLED SURFACE HOLE LOCATION  
◆ = AS-DRILLED FTP/LTP  
○ = AS-DRILLED BOTTOM HOLE LOCATION  
▲ = SECTION CORNER LOCATED  
△ = SECTION CORNER RE-ESTABLISHED (Not Set on Ground.)