

District I  
1625 N. French Dr., Hobbs, NM 88240  
Phone: (575) 393-6161 Fax: (575) 393-0720  
District II  
811 S. First St., Artesia, NM 88210  
Phone: (575) 748-1283 Fax: (575) 748-9720  
District III  
1000 Rio Brazos Road, Aztec, NM 87412  
Phone: (505) 334-6178 Fax: (505) 334-6170  
District IV  
1220 S. St. Francis Dr., Santa Fe, NM 87505  
Phone: (505) 476-3460 Fax: (505) 476-3462

State of New Mexico  
Energy, Minerals & Natural Resources Department  
OIL CONSERVATION DIVISION  
1220 South St. Francis Dr.  
Santa Fe, NM 87505

Form C-102  
Revised August 1, 2011  
Submit one copy to appropriate  
District Office

☐ AMENDED REPORT

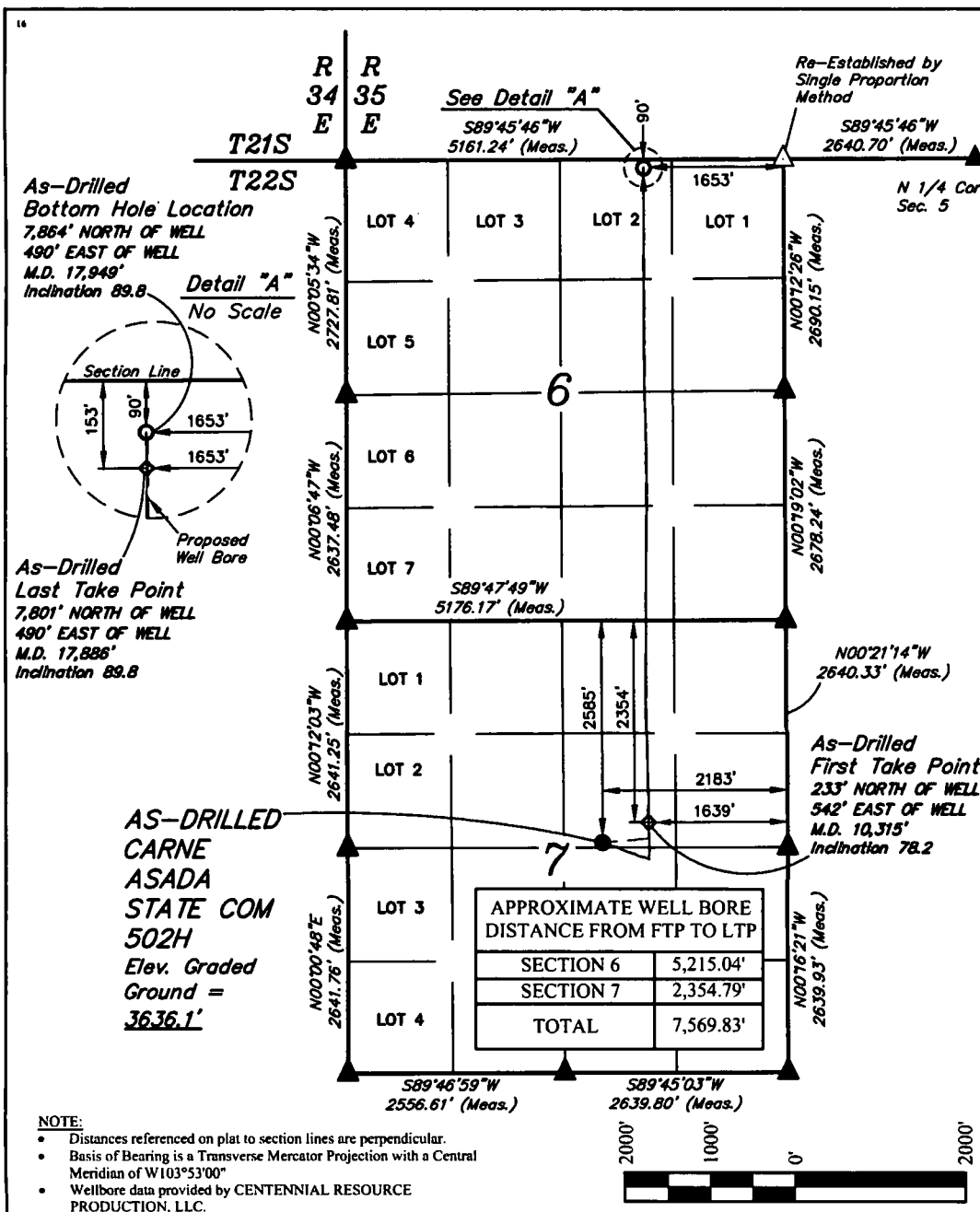
WELL LOCATION AND ACREAGE DEDICATION PLAT

1 API Number <b>30-025-46331</b>		2 Pool Code <b>96553</b>		3 Pool Name <b>Ojo Chiso; Bone Spring</b>	
4 Property Code <b>325659</b>		5 Property Name <b>CARNE ASADA STATE COM</b>		6 Well Number <b>502H</b>	
7 OGRID No. <b>372165</b>		8 Operator Name <b>CENTENNIAL RESOURCE PRODUCTION, LLC</b>		9 Elevation <b>3636.1'</b>	

10 Surface Location									
UL or lot no. G	Section 7	Township 22S	Range 35E	Lot Idn	Feet from the 2585	North/South line NORTH	Feet from the 2183	East/West line EAST	County LEA

11 Bottom Hole Location If Different From Surface									
UL or lot no. 2	Section 6	Township 22S	Range 35E	Lot Idn	Feet from the 90	North/South line NORTH	Feet from the 1653	East/West line EAST	County LEA
12 Dedicated Acres 242.45		13 Joint or Infill		14 Consolidation Code		15 Order No.			

No allowable will be assigned to this completion until all interests have been consolidated or a non-standard unit has been approved by the division.



NOTE:  
• Distances referenced on plat to section lines are perpendicular.  
• Basis of Bearing is a Transverse Mercator Projection with a Central Meridian of W103°53'00"  
• Wellbore data provided by CENTENNIAL RESOURCE PRODUCTION, LLC.

NAD 83 (AS-DRILLED SHL)	
LATITUDE = 32°24'22.93" (32.406371°)	
LONGITUDE = 103°24'19.07" (103.405299°)	
STATE PLANE NAD 83 (N.M. EAST)	
Y: 512812.12' X: 827746.54'	
UTM, NAD 83 (ZONE 13)	
Y: 11767033.29' X: 2132437.50'	

NAD 83 (AS-DRILLED LTP)	
LATITUDE = 32°25'40.09" (32.427803°)	
LONGITUDE = 103°24'12.95" (103.403598°)	
STATE PLANE NAD 83 (N.M. EAST)	
Y: 520613.97' X: 828203.67'	
UTM, NAD 83 (ZONE 13)	
Y: 11774836.86' X: 2132845.89'	

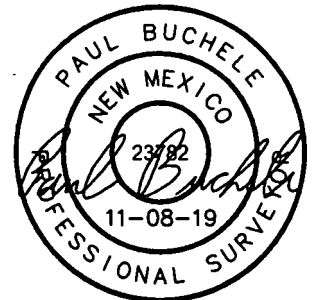
NAD 83 (AS-DRILLED FTP)	
LATITUDE = 32°24'25.21" (32.407003°)	
LONGITUDE = 103°24'12.74" (103.403539°)	
STATE PLANE NAD 83 (N.M. EAST)	
Y: 513046.94' X: 828287.73'	
UTM, NAD 83 (ZONE 13)	
Y: 11767271.45' X: 2132977.15'	

NAD 83 (AS-DRILLED BHL)	
LATITUDE = 32°25'40.71" (32.427976°)	
LONGITUDE = 103°24'12.95" (103.403598°)	
STATE PLANE NAD 83 (N.M. EAST)	
Y: 520676.96' X: 828203.14'	
UTM, NAD 83 (ZONE 13)	
Y: 11774899.84' X: 2132844.96'	

SCALE  
DRAWN BY: R.J. 11-08-19  
● = AS-DRILLED SURFACE HOLE LOCATION  
◇ = AS-DRILLED FTP/LTP  
○ = AS-DRILLED BOTTOM HOLE LOCATION  
▲ = SECTION CORNER LOCATED  
△ = SECTION CORNER RE-ESTABLISHED.  
(Not Set on Ground.)

**"OPERATOR CERTIFICATION"**  
I hereby certify that the information contained herein is true and complete to the best of my knowledge and belief, and that this organization either owns a working interest or unleased mineral interest in the land including the proposed bottom hole location or has a right to drill this well at this location pursuant to a contract with an owner of such a mineral or working interest, or to a voluntary pooling agreement or a compulsory pooling order heretofore entered by the division.  
Signature: **K. Schlichting** Date: **11/21/19**  
Printed Name: **Kanicia Schlichting**  
E-mail Address: **kanicia.schlichting@cdevinc.com**

**"SURVEYOR CERTIFICATION"**  
I hereby certify that the well location shown on this plat was plotted from field notes of actual surveys made by me or under my supervision, and that the same is true and correct to the best of my belief.  
October 11, 2019  
Date of Survey  
Signature and Seal of Professional Surveyor:



Certificate Number: