

PLM A/P

DISTRICT I
1825 N. FREDERICK DR., BOBBE, NM 88240
Phone: (505) 252-8161 Fax: (505) 252-0722

DISTRICT II
811 S. FIRST ST., ARTESIA, NM 88210
Phone: (505) 748-1883 Fax: (505) 748-0720

DISTRICT III
1000 RIO BRAZOS RD., AZTEC, NM 87410
Phone: (505) 334-8178 Fax: (505) 334-8170

DISTRICT IV
1220 S. ST. FRANCIS DR., SANTA FE, NM 87505
Phone: (505) 476-3450 Fax: (505) 476-3453

State of New Mexico
Energy, Minerals & Natural Resources Department
OIL CONSERVATION DIVISION
1220 SOUTH ST. FRANCIS DR.
Santa Fe, New Mexico 87505

Form C-102
Revised August 1, 2011
Submit one copy to appropriate
District Office

☐ AMENDED REPORT

WELL LOCATION AND ACREAGE DEDICATION PLAT

API Number 30-025-4647	Pool Code 98098	Pool Name Wildcat; Wolfeamp <i>WOLFONE</i>
Property Code 315644	Property Name STOVE PIPE FEDERAL COM	Well Number 702H
OGRIID No. 229137	Operator Name COG OPERATING, LLC	Elevation 3321.3'

Surface Location

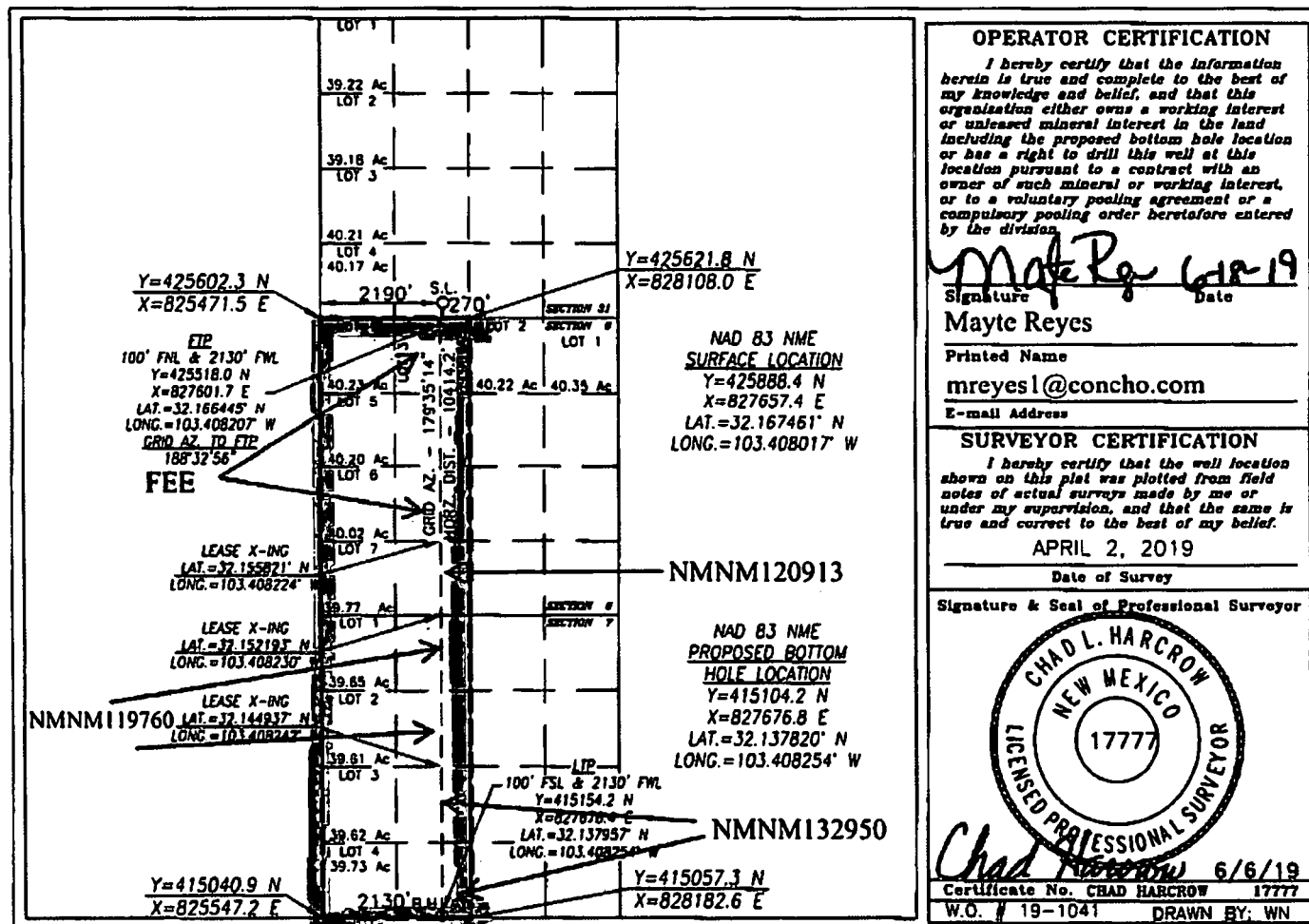
UL or lot No.	Section	Township	Range	Lot Idn	Feet from the	North/South line	Feet from the	East/West line	County
N	31	24-S	35-E		270	SOUTH	2190	WEST	LEA

Bottom Hole Location If Different From Surface

UL or lot No.	Section	Township	Range	Lot Idn	Feet from the	North/South line	Feet from the	East/West line	County
N	7	25-S	35-E		50	SOUTH	2130	WEST	LEA

Dedicated Acres	Joint or Infill	Consolidation Code	Order No.
640.54			

NO ALLOWABLE WILL BE ASSIGNED TO THIS COMPLETION UNTIL ALL INTERESTS HAVE BEEN CONSOLIDATED OR A NON-STANDARD UNIT HAS BEEN APPROVED BY THE DIVISION



As per LR2000 Sec. 6 Lot 3: 40.02 Lot 4: 39.76 Lot 5: 39.87 Lot 6: 39.99 Lot 7 40.10 Sec. 7 Lot 1: 40.17 Lot 2: 40.19 Lot 3: 40.21 Lot 4: 40.23

Intent ☐ As Drilled ☐

API #

Operator Name: COG OPERATING, LLC	Property Name: STOVE PIPE FEDERAL COM	Well Number 702H
--------------------------------------	--	---------------------

Kick Off Point (KOP)

UL	Section	Township	Range	Lot	Feet	From N/S	Feet	From E/W	County
Latitude					Longitude			NAD	

First Take Point (FTP)

UL	Section	Township	Range	Lot	Feet	From N/S	Feet	From E/W	County
3	6	25-S	35-E		100	NORTH	2130	WEST	LEA
Latitude 32.166445					Longitude -103.408207			NAD 83	

Last Take Point (LTP)

UL	Section	Township	Range	Lot	Feet	From N/S	Feet	From E/W	County
N	7	25-S	35-E		100	SOUTH	2130	WEST	LEA
Latitude 32.137957					Longitude -103.408254			NAD 83	

Is this well the defining well for the Horizontal Spacing Unit? ☐

Is this well an infill well? ☐

If infill is yes please provide API if available, Operator Name and well number for Defining well for Horizontal Spacing Unit.

API #

Operator Name:	Property Name:	Well Number
----------------	----------------	-------------

KZ 06/29/2018