

BLM CIP

DISTRICT I
1625 N. FRENCH DR., HOBBES, NM 88240
Phone: (505) 933-0181 Fax: (505) 333-0723

DISTRICT II
811 E. FIRST ST., ARTESIA, NM 88210
Phone: (505) 748-1283 Fax: (505) 748-9723

DISTRICT III
1000 RIO BRAZOS RD., AZTEC, NM 87410
Phone: (505) 334-0178 Fax: (505) 334-0178

DISTRICT IV
1220 S. ST. FRANCIS DR., SANTA FE, NM 87505
Phone: (505) 476-3400 Fax: (505) 476-3400

State of New Mexico
Energy, Minerals & Natural Resources Department
OIL CONSERVATION DIVISION
1220 SOUTH ST. FRANCIS DR.
Santa Fe, New Mexico 87505

Form C-102
Revised August 1, 2011
Submit one copy to appropriate
District Office

☐ AMENDED REPORT

WELL LOCATION AND ACREAGE DEDICATION PLAT

API Number 30-025 - 4-6456	Pool Code 98098	Pool Name WC-025 G-09 3243532M; WOLFBORE
Property Code 316644	Property Name STOVE PIPE FEDERAL COM	Well Number 601H
GRID No. 229137	Operator Name COG OPERATING, LLC	Elevation 3321.7'

Surface Location

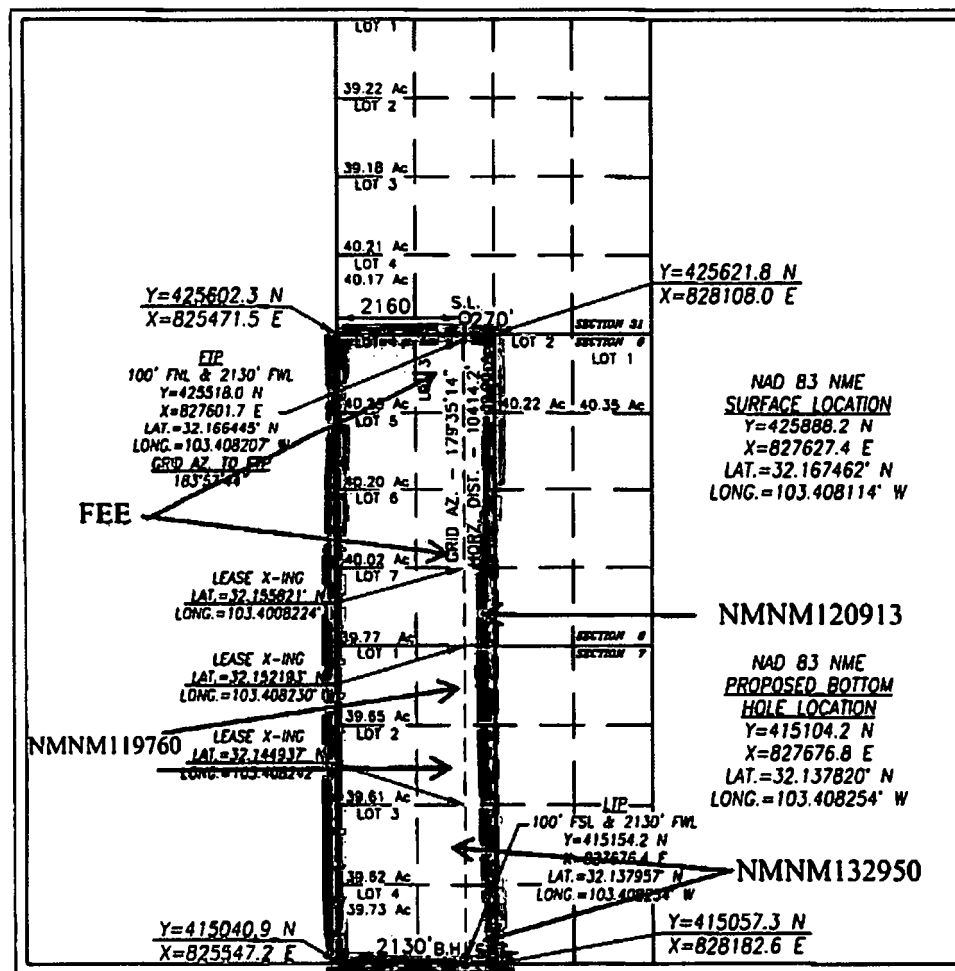
UL or lot No.	Section	Township	Range	Lot Idn	Feet from the	North/South line	Feet from the	East/West line	County
N	31	24-S	35-E		270	SOUTH	2160	WEST	LEA

Bottom Hole Location If Different From Surface

UL or lot No.	Section	Township	Range	Lot Idn	Feet from the	North/South line	Feet from the	East/West line	County
N	7	25-S	35-E		50	SOUTH	2130	WEST	LEA

Dedicated Acres	Joint or Infill	Consolidation Code	Order No.
640.54 639.08			

NO ALLOWABLE WILL BE ASSIGNED TO THIS COMPLETION UNTIL ALL INTERESTS HAVE BEEN CONSOLIDATED OR A NON-STANDARD UNIT HAS BEEN APPROVED BY THE DIVISION



OPERATOR CERTIFICATION

I hereby certify that the information herein is true and complete to the best of my knowledge and belief, and that this organization either owns a working interest or unleased mineral interest in the land including the proposed bottom hole location or has a right to drill this well at this location pursuant to a contract with an owner of such mineral or working interest, or to a voluntary pooling agreement or a compulsory pooling order heretofore entered by the division.

Mayte Reyes 6-18-19
Signature Date

Mayte Reyes
Printed Name
mreyes1@concho.com
E-mail Address

SURVEYOR CERTIFICATION

I hereby certify that the well location shown on this plat was plotted from field notes of actual surveys made by me or under my supervision, and that the same is true and correct to the best of my belief.

APRIL 2, 2019

Date of Survey

Signature & Seal of Professional Surveyor



Chad HARCROW 6/6/19
Certificate No. CHAD HARCROW 17777
W.O. # 19-1040 DRAWN BY: WN

As per LR2000 Sec. 6 Lot 3: 40.02 Lot 4: 39.76 Lot 5: 39.87 Lot 6: 39.99 Lot 7: 40.1 Sec. 7 Lot 1: 40.17 Lot 2: 40.19 Lot 3: 40.21 Lot 4: 40.23

Intent ☐ As Drilled ☐

API #								
Operator Name: COG OPERATING, LLC			Property Name: STOVE PIPE FEDERAL COM			Well Number 601H		

Kick Off Point (KOP)

UL	Section	Township	Range	Lot	Feet	From N/S	Feet	From E/W	County
Latitude					Longitude				NAD

First Take Point (FTP)

UL	Section	Township	Range	Lot	Feet	From N/S	Feet	From E/W	County
3	6	25-S	35-E		100	NORTH	2130	WEST	LEA
Latitude 32.166445					Longitude -103.408207				NAD 83

Last Take Point (LTP)

UL	Section	Township	Range	Lot	Feet	From N/S	Feet	From E/W	County
N	7	25-S	35-E		100	SOUTH	2130	WEST	LEA
Latitude 32.137957					Longitude -103.408254				NAD 83

Is this well the defining well for the Horizontal Spacing Unit? ☐

Is this well an infill well? ☐

If infill is yes please provide API if available, Operator Name and well number for Defining well for Horizontal Spacing Unit.

API #								
Operator Name:			Property Name:			Well Number		

KZ 06/29/2018