

District I
1625 N. French Dr., Hobbs, NM 88240
Phone: (575) 393-6161 Fax: (575) 393-0720
District II
811 S. First St., Artesia, NM 88210
Phone: (575) 748-1283 Fax: (575) 748-9720
District III
1000 Rio Brazos Road, Aztec, NM 87410
Phone: (505) 334-6178 Fax: (505) 334-6170
District IV
1220 S. St. Francis Dr., Santa Fe, NM 87505
Phone: (505) 476-3460 Fax: (505) 476-3462

State of New Mexico
Energy, Minerals & Natural Resources Department
OIL CONSERVATION DIVISION
1220 South St. Francis Dr.
Santa Fe, NM 87505

Form C-102
Revised August 1, 2011
Submit one copy to appropriate
District Office

☐ AMENDED REPORT

HOBBS OCO
DEC 02 2019
RECEIVED

WELL LOCATION AND ACREAGE DEDICATION PLAT

¹ API Number 30-025-45779	² Pool Code 97293	³ Pool Name Ojo Chiso: Bone Spring, South
⁴ Property Code 322320	⁵ Property Name AIRSTREAM 24 STATE COM	⁶ Well Number 503H
⁷ GRID No. 372165	⁸ Operator Name CENTENNIAL RESOURCE PRODUCTION, LLC	⁹ Elevation 3510.0'

¹⁰ Surface Location

UL or lot no.	Section	Township	Range	Lot Idn	Feet from the	North/South line	Feet from the	East/West line	County
O	13	22S	34E		599	SOUTH	2584.5	EAST	LEA

¹¹ Bottom Hole Location If Different From Surface

UL or lot no.	Section	Township	Range	Lot Idn	Feet from the	North/South line	Feet from the	East/West line	County
N	25	22S	34E		94	SOUTH	2215	WEST	LEA

¹² Dedicated Acres 640	¹³ Joint or Infill	¹⁴ Consolidation Code	¹⁵ Order No.
---	-------------------------------	----------------------------------	-------------------------

No allowable will be assigned to this completion until all interests have been consolidated or a non-standard unit has been approved by the division.

- = AS-DRILLED SURFACE HOLE LOCATION
◆ = AS-DRILLED FTP/LTP
○ = AS-DRILLED BOTTOM HOLE LOCATION
▲ = SECTION CORNER LOCATED

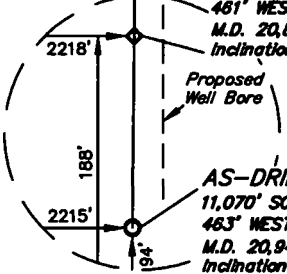
NAD 83 (AS-DRILLED SHL)
LATITUDE = 32°23'09.94" (32.386096°)
LONGITUDE = 103°25'24.44" (103.423456°)
STATE PLANE NAD 83 (N.M. EAST)
Y: 505387.66' X: 822205.22'
UTM, NAD 83 (ZONE 13)
Y: 11759575.37' X: 2126943.28'

NAD 83 (AS-DRILLED FTP)
LATITUDE = 32°23'02.73" (32.384091°)
LONGITUDE = 103°25'29.58" (103.424882°)
STATE PLANE NAD 83 (N.M. EAST)
Y: 504654.73' X: 821771.33'
UTM, NAD 83 (ZONE 13)
Y: 11758839.84' X: 2126514.02'

NAD 83 (AS-DRILLED LTP)
LATITUDE = 32°21'21.37" (32.355937°)
LONGITUDE = 103°25'30.36" (103.425101°)
STATE PLANE NAD 83 (N.M. EAST)
Y: 494411.43' X: 821790.64'
UTM, NAD 83 (ZONE 13)
Y: 11748598.18' X: 2126597.15'

NAD 83 (AS-DRILLED BHL)
LATITUDE = 32°21'20.44" (32.355679°)
LONGITUDE = 103°25'30.40" (103.425111°)
STATE PLANE NAD 83 (N.M. EAST)
Y: 494317.46' X: 821788.37'
UTM, NAD 83 (ZONE 13)
Y: 11748504.21' X: 2126595.47'

Detail "A" AS-DRILLED LTP
No Scale
10,978' SOUTH OF WELL
461' WEST OF WELL
M.D. 20,851'
Inclination 89.5

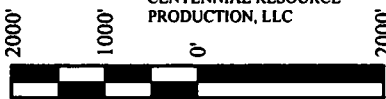


APPROXIMATE WELL BORE
DISTANCE FROM FTP TO LTP

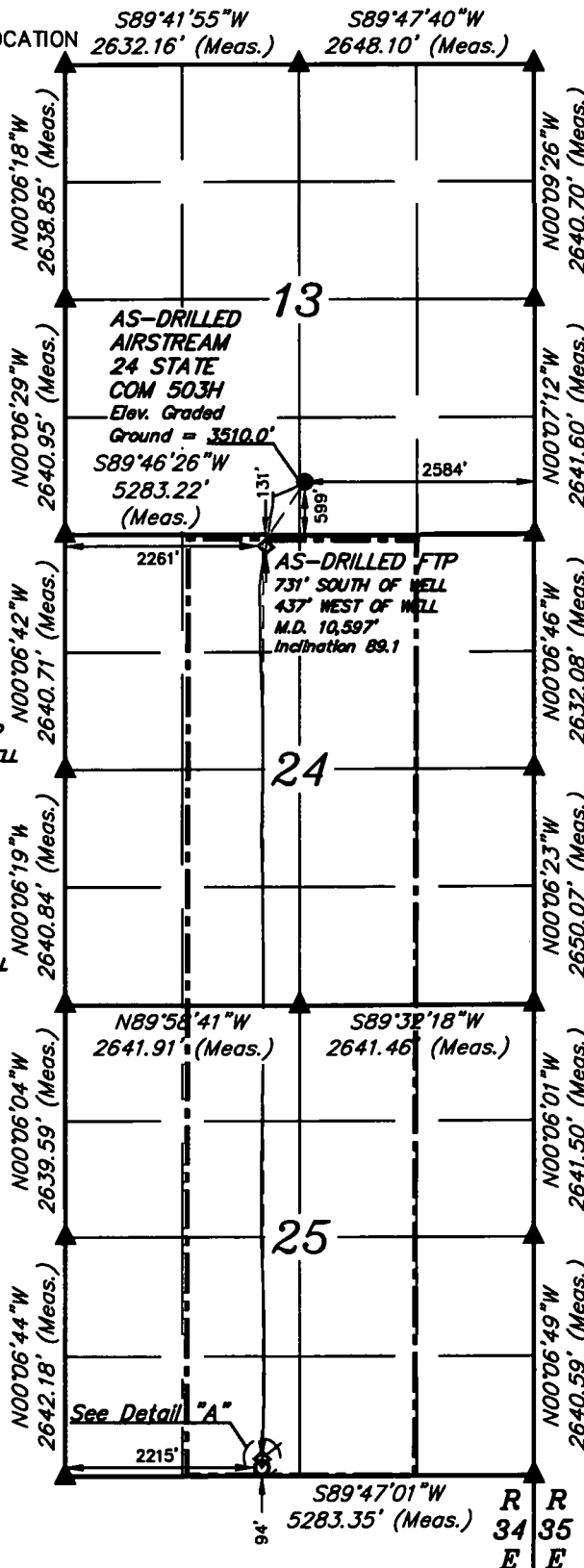
SECTION 24	5167.15'
SECTION 25	5085.12'
TOTAL	10,252.27'

NOTE:

- Distances referenced on plat to section lines are perpendicular.
- Basis of Bearing is a Transverse Mercator Projection with a Central Meridian of W103°53'00"
- Wellbore data provided by CENTENNIAL RESOURCE PRODUCTION, LLC



SCALE
DRAWN BY: J.N. 10-23-19



¹⁷ OPERATOR
CERTIFICATION

I hereby certify that the information contained herein is true and complete to the best of my knowledge and belief, and that this organization either owns a working interest or unleased mineral interest in the land including the proposed bottom hole location or has a right to drill this well at this location pursuant to a contract with an owner of such a mineral or working interest, or to a voluntary pooling agreement or a compulsory pooling order heretofore entered by the division.

K. Schlichting 11/6/19
Signature Date

Kanicia Schlichting
Printed Name

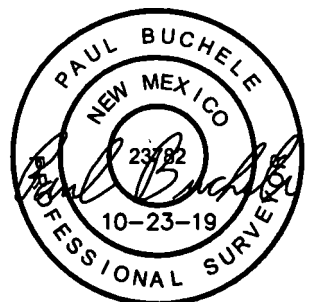
kanicia.schlichting@cdevinc.com
E-mail Address

¹⁸ SURVEYOR
CERTIFICATION

I hereby certify that the well location shown on this plat was plotted from field notes of actual surveys made by me or under my supervision, and that the same is true and correct to the best of my belief.

September 11, 2019

Date of Survey
Signature and Seal of Professional Surveyor:



Certificate Number:

Intent ☐ As Drilled ☒

HOBBS
DEC 02 2019
RECEIVED

API # 30-025-45779		
Operator Name: Centennial Resource Production, LLC	Property Name: Airstream 24 State Com	Well Number 503H

Kick Off Point (KOP)

UL O	Section 13	Township 22S	Range 34E	Lot O	Feet 599	From N/S S	Feet 284	From E/W E	County Lea
Latitude 32.386096					Longitude -103.426456			NAD 83	

First Take Point (FTP)

UL C	Section 24	Township 22S	Range 34E	Lot C	Feet 131	From N/S N	Feet 2261	From E/W W	County Lea
Latitude 32.384091					Longitude -103.42882			NAD 83	

Last Take Point (LTP)

UL N	Section 25	Township 22S	Range 34E	Lot N	Feet 188	From N/S S	Feet 2218	From E/W W	County Lea
Latitude 32.355937					Longitude -103.425101			NAD 83	

Is this well the defining well for the Horizontal Spacing Unit? ☐ No

Is this well an infill well? ☐ Yes

If infill is yes please provide API if available, Operator Name and well number for Defining well for Horizontal Spacing Unit.

API # 30-025-45780		
Operator Name: Centennial Resource Production, LLC	Property Name: Airstream 24 State Com	Well Number 504H

KZ 06/29/2018