

District I
1625 N. French Dr., Hobbs, NM 88240
Phone: (575) 393-6161 Fax: (575) 393-0720
District II
811 S. First St., Artesia, NM 88210
Phone: (575) 748-1283 Fax: (575) 748-9720
District III
1000 Rio Brazos Road, Aztec, NM 87410
Phone: (505) 334-6178 Fax: (505) 334-6170
District IV
1220 S. St. Francis Dr., Santa Fe, NM 87505
Phone: (505) 476-3460 Fax: (505) 476-3462

State of New Mexico
Energy, Minerals & Natural Resources Department
OIL CONSERVATION DIVISION
1220 South St. Francis Dr.
Santa Fe, NM 87505

Form C-102
Revised August 1, 2011
Submit one copy to appropriate
District Office

☐ AMENDED REPORT

HOBBS OCD
DEC 02 2019

WELL LOCATION AND ACREAGE DEDICATION PLAT

¹ API Number 30-025-45780	² Pool Code 97293	Ojo Chiso; Boreas, South
⁴ Property Code 322320	⁵ Property Name AIRSTREAM 24 STATE COM	⁶ Well Number 504H
⁷ OGRID No. 372165	⁸ Operator Name CENTENNIAL RESOURCE PRODUCTION, LLC	⁹ Elevation 3510.0'

¹⁰ Surface Location

UL or lot no.	Section	Township	Range	Lot Idn	Feet from the	North/South line	Feet from the	East/West line	County
O	13	22S	34E		800.55	SOUTH	2558.3	EAST	LEA

¹¹ Bottom Hole Location If Different From Surface

UL or lot no.	Section	Township	Range	Lot Idn	Feet from the	North/South line	Feet from the	East/West line	County
O	25	22S	34E		91	SOUTH	2153	EAST	LEA

¹² Dedicated Acres 640	¹³ Joint or Infill	¹⁴ Consolidation Code	¹⁵ Order No.
--------------------------------------	-------------------------------	----------------------------------	-------------------------

No allowable will be assigned to this completion until all interests have been consolidated or a non-standard unit has been approved by the division.

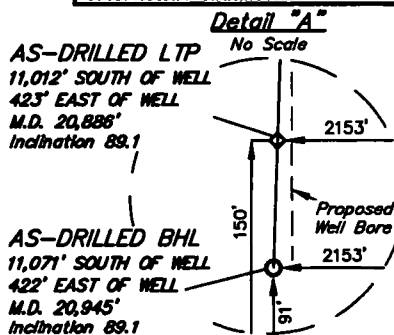
- = AS-DRILLED SURFACE HOLE LOCATION
◆ = AS-DRILLED FTP/LTP
○ = AS-DRILLED BOTTOM HOLE LOCATION
▲ = SECTION CORNER LOCATED

NAD 83 (AS-DRILLED SHL)
LATITUDE = 32°23'09.95" (32.386097°)
LONGITUDE = 103°25'24.10" (103.423362°)
STATE PLANE NAD 83 (N.M. EAST)
Y: 505388.55' X: 822234.35'
UTM, NAD 83 (ZONE 13)
Y: 11759576.44' X: 2126972.40'

NAD 83 (AS-DRILLED FTP)
LATITUDE = 32°23'01.58" (32.383772°)
LONGITUDE = 103°25'19.43" (103.422064°)
STATE PLANE NAD 83 (N.M. EAST)
Y: 504545.90' X: 822642.32'
UTM, NAD 83 (ZONE 13)
Y: 11758736.46' X: 2127385.56'

NAD 83 (AS-DRILLED LTP)
LATITUDE = 32°21'20.99" (32.355831°)
LONGITUDE = 103°25'19.73" (103.422146°)
STATE PLANE NAD 83 (N.M. EAST)
Y: 494380.51' X: 822703.52'
UTM, NAD 83 (ZONE 13)
Y: 11748572.95' X: 2127510.09'

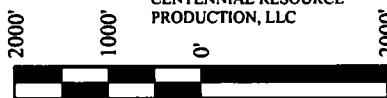
NAD 83 (AS-DRILLED BHL)
LATITUDE = 32°21'20.41" (32.355669°)
LONGITUDE = 103°25'19.73" (103.422148°)
STATE PLANE NAD 83 (N.M. EAST)
Y: 494321.52' X: 822703.30'
UTM, NAD 83 (ZONE 13)
Y: 11748513.97' X: 2127510.24'



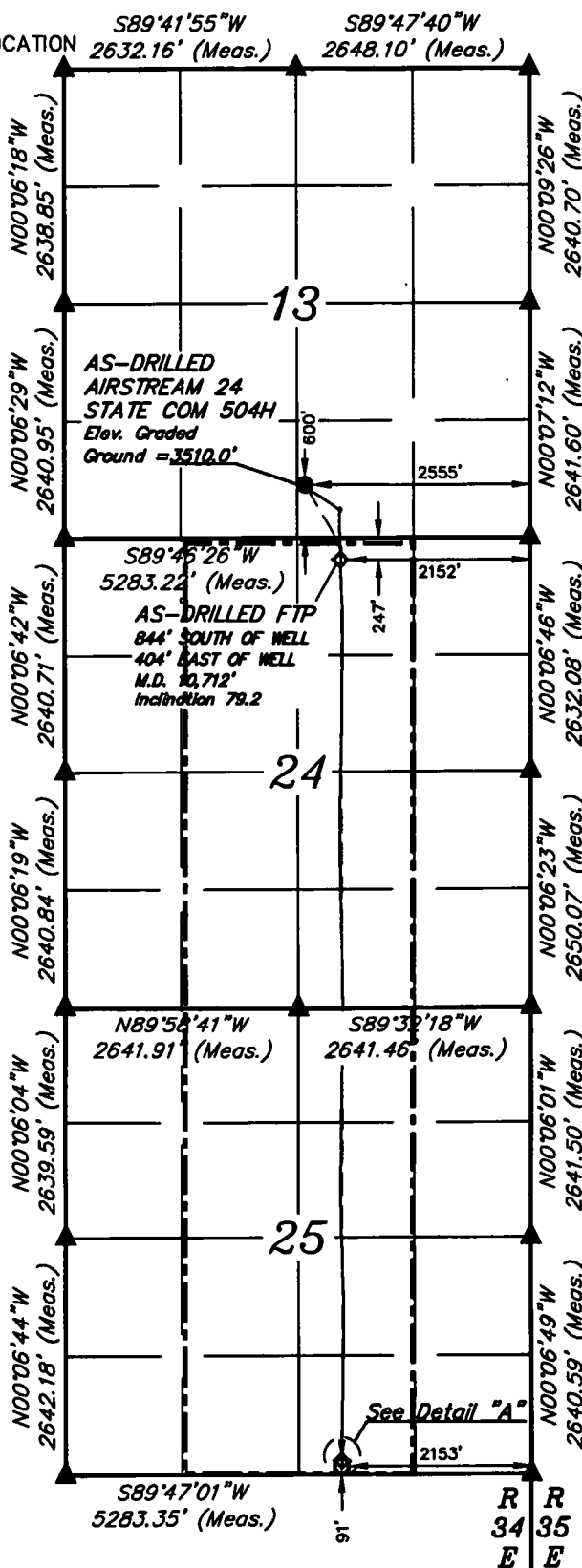
APPROXIMATE WELL BORE DISTANCE FROM FTP TO LTP	
SECTION 24	5045.48'
SECTION 25	5123.66'
TOTAL	10,169.14'

NOTE:

- Distances referenced on plat to section lines are perpendicular.
- Basis of Bearing is a Transverse Mercator Projection with a Central Meridian of W103°53'00"
- Wellbore data provided by CENTENNIAL RESOURCE PRODUCTION, LLC



SCALE
DRAWN BY: J.N. 10-23-19



¹⁶ OPERATOR CERTIFICATION

I hereby certify that the information contained herein is true and complete to the best of my knowledge and belief, and that this organization either owns a working interest or unleased mineral interest in the land including the proposed bottom hole location or has a right to drill this well at this location pursuant to a contract with an owner of such a mineral or working interest, or to a voluntary pooling agreement or a compulsory pooling order heretofore entered by the division.

K. 28 11/6/19
Signature Date

Kanicia Schlichting
Printed Name

kanicia.schlichting@cdevinc.com
E-mail Address

¹⁷ SURVEYOR CERTIFICATION

I hereby certify that the well location shown on this plat was plotted from field notes of actual surveys made by me or under my supervision, and that the same is true and correct to the best of my belief.

September 11, 2019

Date of Survey
Signature and Seal of Professional Surveyor:



Certificate Number:

Intent ☐ As Drilled ☒

HOBBS OCD

DEC 02 2019

RECEIVED

API # 30-025-45780		Operator Name: Centennial Resource Production, LLC		Property Name: Airstream 24 State Com		Well Number 504H	
------------------------------	--	--	--	---	--	----------------------------	--

Kick Off Point (KOP)

UL O	Section 13	Township 22S	Range 34E	Lot O	Feet 600	From N/S S	Feet 2555	From E/W E	County Lea
Latitude 32.386097					Longitude -103.423362				NAD 83

First Take Point (FTP)

UL B	Section 24	Township 22S	Range 34E	Lot B	Feet 247	From N/S N	Feet 2152	From E/W E	County Lea
Latitude 32.383772					Longitude -103.422064				NAD 83

Last Take Point (LTP)

UL O	Section 25	Township 22S	Range 34E	Lot M	Feet 150	From N/S S	Feet 2153	From E/W E	County Lea
Latitude 32.355831					Longitude -103.422146				NAD 83

Is this well the defining well for the Horizontal Spacing Unit? ☐ Yes

Is this well an infill well? ☐ No

If infill is yes please provide API if available, Operator Name and well number for Defining well for Horizontal Spacing Unit.

API #		
Operator Name:	Property Name:	Well Number

KZ 06/29/2018