

District I
1625 N. French Dr., Hobbs, NM 88240
Phone: (575) 393-6161 Fax: (575) 393-0720
District II
811 S. First St., Artesia, NM 88210
Phone: (575) 748-1283 Fax: (575) 748-9720
District III
1000 Rio Brazos Road, Aztec, NM 87410
Phone: (505) 334-6178 Fax: (505) 334-6170
District IV
1220 S. St. Francis Dr., Santa Fe, NM 87505
Phone: (505) 476-3460 Fax: (505) 476-3462

State of New Mexico
Energy, Minerals & Natural Resources

Department
OIL CONSERVATION DIVISION

1220 South St. Francis Dr. DEC 09 2019

Sante Fe, NM 87505

FORM C-102

Revised August 1, 2011

Submit one copy to appropriate

District Office

☐ AMENDED REPORT

RECEIVED

WELL LOCATION AND ACREAGE DEDICATION PLAT

| | | |
|---|---|---|
| ¹ API Number 30-025-45506 | ² Pool Code 97903 | ³ Pool Name WC025 G08 S253235G; LOWER BONE SPRING |
| ⁴ Property Code 324860 | ⁵ Property Name FEARLESS 26 FED COM | ⁶ Well Number #504H |
| ⁷ GRID No. 7377 | ⁸ Operator Name EOG RESOURCES, INC. | ⁹ Elevation 3399' |

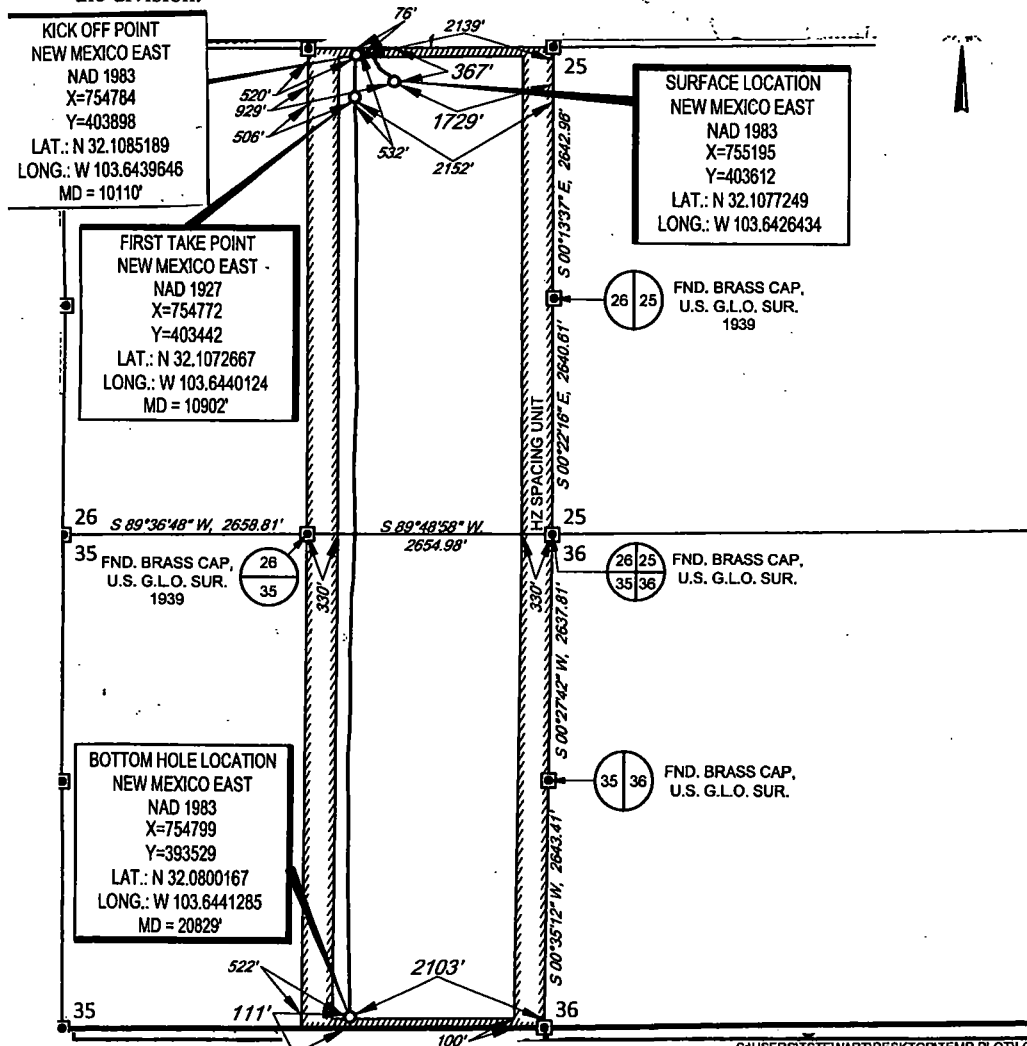
¹⁰Surface Location

| | | | | | | | | | |
|--------------------|---------------|------------------|---------------|--------------|-----------------------|---------------------------|------------------------|------------------------|---------------|
| UL or lot no. B | Section 26 | Township 25-S | Range 32-E | Lot Idn - | Feet from the 367' | North/South line NORTH | Feet from the 1729' | East/West line EAST | County LEA |
|--------------------|---------------|------------------|---------------|--------------|-----------------------|---------------------------|------------------------|------------------------|---------------|

| | | | | | | | | | |
|--------------------|---------------|------------------|---------------|--------------|-----------------------|---------------------------|------------------------|------------------------|---------------|
| UL or lot no. 0 | Section 35 | Township 25-S | Range 32-E | Lot Idn - | Feet from the 111' | North/South line SOUTH | Feet from the 2103' | East/West line EAST | County LEA |
|--------------------|---------------|------------------|---------------|--------------|-----------------------|---------------------------|------------------------|------------------------|---------------|

| | | | |
|--------------------------------------|-------------------------------|----------------------------------|-------------------------|
| ¹¹ Dedicated Acres 640 | ¹² Joint or Infill | ¹³ Consolidation Code | ¹⁴ Order No. |
|--------------------------------------|-------------------------------|----------------------------------|-------------------------|

No allowable will be assigned to this completion until all interests have been consolidated or a non-standard unit has been approved by the division.

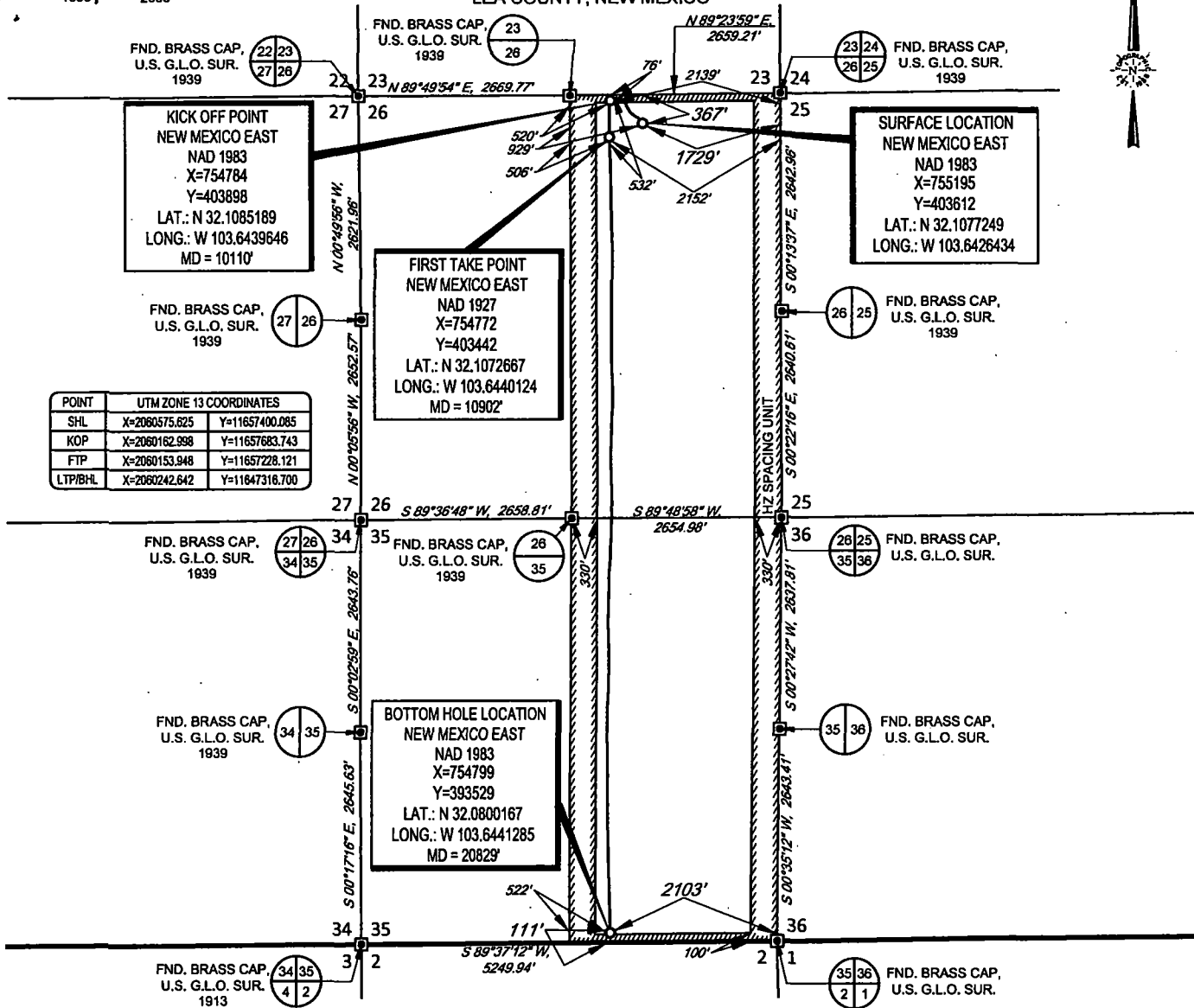


| | |
|---|---|
| ¹⁷ OPERATOR CERTIFICATION | |
| I hereby certify that the information contained herein is true and complete to the best of my knowledge and belief, and that this organization either owns a working interest or unleased mineral interest in the land including the proposed bottom hole location or has a right to drill this well at this location pursuant to a contract with an owner of such a mineral or working interest, or to a voluntary pooling agreement or a compulsory pooling order heretofore entered by the division. | |
| Signature Kay Maddox | Date 12/05/2019 |
| Printed Name Kay Maddox | |
| E-mail Address | |
| ¹⁸ SURVEYOR CERTIFICATION | |
| I hereby certify that the well location shown on this plat was plotted from field notes of actual surveys made by me or under my supervision, and that the same is true to the best of my belief. | |
| Date of Survey 08/20/2017 | Signature and Seal of Professional Surveyor MICHAEL BROWN NEW MEXICO 18329 |
| Certificate Number | |

SCALE: 1" = 2000'

0' 1000' 2000'

SECTION 26 & 35, TOWNSHIP 25-S, RANGE 32-E, N.M.P.M.
LEA COUNTY, NEW MEXICO

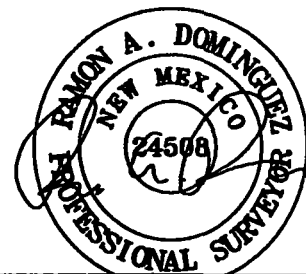


| POINT | UTM ZONE 13 COORDINATES |
|---------|------------------------------|
| SHL | X=2080575.625 Y=11657400.085 |
| KOP | X=2080162.998 Y=11657683.743 |
| FTP | X=2080153.948 Y=11657228.121 |
| LTP/BHL | X=2080242.642 Y=11647316.700 |

LEASE NAME & WELL NO.: FEARLESS 26 FED COM #504H
SECTION 26 TWP 25-S RGE 32-E SURVEY N.M.P.M.
COUNTY LEA STATE NM ELEVATION 3394'
DESCRIPTION 367' FNL & 1729' FEL



1400 EVERMAN
PARKWAY, Ste. 146 • FT. WORTH, TEXAS 76140 TELEPHONE:
(817) 744-7512 • FAX (817) 744-7548
2803 NORTH BIG SPRING • MIDLAND, TEXAS 79705
TELEPHONE: (432) 682-1653 OR (800) 767-1653 • FAX (432) 682-1743
WWW.TOPOGRAPHIC.COM



Ramon A. Dominguez, P.S. No. 24508
NOVEMBER 21, 2019



| | |
|---|-----------|
| FEARLESS 26 FED COM #504H AS-COMPLETE | REVISION: |
| DATE: 11/21/19 | |
| FILE: AD_FEARLESS_26_FED_COM_504H | |
| DRAWN BY: H.B. | |
| SHEET: 1 OF 1 | |

- NOTES:
1. ORIGINAL DOCUMENT SIZE: 8.5" X 11"
 2. ALL BEARINGS, DISTANCES, AND COORDINATE VALUES CONTAINED HEREIN ARE GRID BASED UPON THE NEW MEXICO STATE PLANE COORDINATE SYSTEM, EAST ZONE, U.S. SURVEY FEET, NORTH AMERICAN DATUM 1983.
 3. THIS WELL LOCATION SHOWN HEREON HAS BEEN SURVEYED ON THE GROUND UNDER MY SUPERVISION AND PREPARED ACCORDING TO THE EVIDENCE FOUND AT THE TIME OF SURVEY, AND DATA PROVIDED BY EOG RESOURCES, INC. THIS CERTIFICATION IS MADE AND LIMITED TO THOSE PERSONS OR ENTITIES SHOWN ON THE FACE OF THIS PLAT AND IS NON-TRANSFERABLE. THIS SURVEY IS CERTIFIED FOR THIS TRANSACTION ONLY.

Intent ☐ As Drilled ☒

| | | | |
|--------------------------------------|--|---|---------------------|
| API # 30-025-45506 | | | |
| Operator Name: EOG RESOURCES, INC | | Property Name: FEARLESS 26 FEDERAL COM | Well Number 504H |

Kick Off Point (KOP)

| | | | | | | | | | |
|------------------------|---------------|-----------------|--------------|-----|--------------------------|-------------------|--------------|------------------|---------------|
| UL B | Section 26 | Township 25S | Range 32E | Lot | Feet 76 | From N/S NORTH | Feet 2139 | From E/W EAST | County LEA |
| Latitude 32.1085189 | | | | | Longitude 103.6439646 | | | | NAD 1983 |

First Take Point (FTP)

| | | | | | | | | | |
|------------------------|---------------|-----------------|--------------|-----|--------------------------|-------------------|--------------|------------------|---------------|
| UL B | Section 26 | Township 25S | Range 32E | Lot | Feet 532 | From N/S NORTH | Feet 2152 | From E/W EAST | County LEA |
| Latitude 32.1072667 | | | | | Longitude 103.6440124 | | | | NAD 1983 |

Last Take Point (LTP)

| | | | | | | | | | |
|------------------------|---------------|-----------------|--------------|-----|--------------------------|-------------------|--------------|------------------|---------------|
| UL O | Section 35 | Township 25S | Range 32E | Lot | Feet 111 | From N/S SOUTH | Feet 2103 | From E/W EAST | County LEA |
| Latitude 32.0800167 | | | | | Longitude 103.6441285 | | | | NAD 1983 |

Is this well the defining well for the Horizontal Spacing Unit? ☐

Is this well an infill well? ☐

If infill is yes please provide API if available, Operator Name and well number for Defining well for Horizontal Spacing Unit.

| | | | |
|--------------------------------------|--|---|---------------------|
| API # 30-025-45506 | | | |
| Operator Name: EOG RESOURCES, INC | | Property Name: FEARLESS 26 FEDERAL COM | Well Number 503H |

KZ 06/29/2018