

District I
1625 N. French Dr., Hobbs, NM 88240
Phone: (575) 393-6161 Fax: (575) 393-0720
District II
811 S. First St., Artesia, NM 88210
Phone: (575) 748-1283 Fax: (575) 748-9720
District III
1000 Rio Brazos Road, Aztec, NM 87410
Phone: (505) 334-6178 Fax: (505) 334-6170
District IV
1220 S. St. Francis Dr., Santa Fe, NM 87505
Phone: (505) 476-3460 Fax: (505) 476-3462

State of New Mexico
Energy, Minerals & Natural Resources Department
OIL CONSERVATION DIVISION
1220 South St. Francis Dr.
Santa Fe, NM 87505

Form C-102
Revised August 1, 2011
Submit one copy to appropriate
District Office

DEC 16 2019

RECEIVED

☐ AMENDED REPORT

WELL LOCATION AND ACREAGE DEDICATION PLAT

¹ API Number 30-025-45769	² Pool Code 96603	³ Pool Name TRISTE DRAW; BONE SPRING
⁴ Property Code 325016	⁵ Property Name GHOST RIDER 22-15 FEDERAL COM	⁶ Well Number 202H
⁷ GRID NO. 873	⁸ Operator Name APACHE CORPORATION	⁹ Elevation 3590'

¹⁰ Surface Location

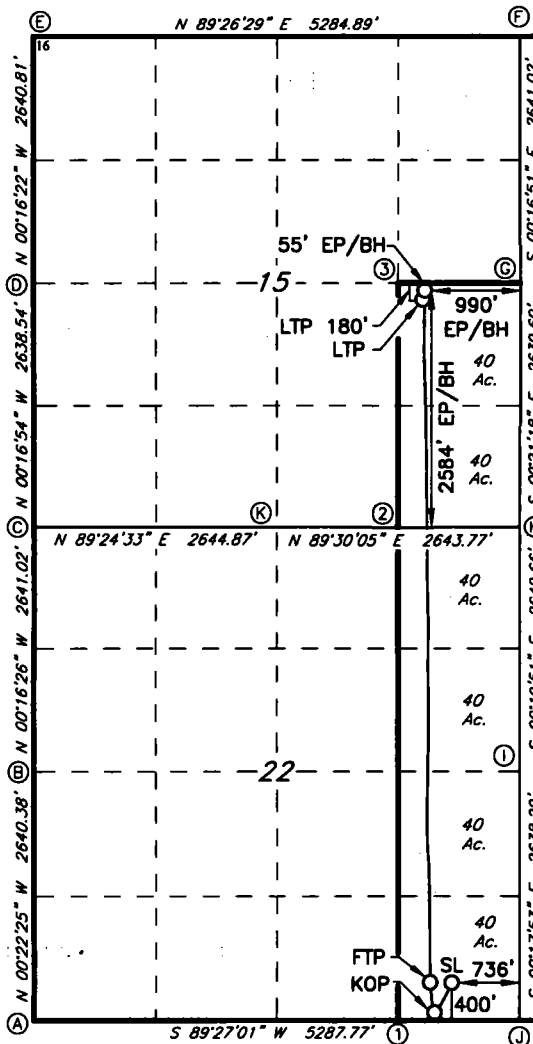
UL or lot no. P	Section 22	Township 24S	Range 32E	Lot Idn	Feet from the 400	North/South line SOUTH	Feet From the 736	East/West line EAST	County LEA
---------------------------	----------------------	------------------------	---------------------	---------	-----------------------------	----------------------------------	-----------------------------	-------------------------------	----------------------

¹¹ Bottom Hole Location If Different From Surface

UL or lot no. I	Section 15	Township 24S	Range 32E	Lot Idn	Feet from the 2584	North/South line SOUTH	Feet from the 990	East/West line EAST	County LEA
---------------------------	----------------------	------------------------	---------------------	---------	------------------------------	----------------------------------	-----------------------------	-------------------------------	----------------------

¹² Dedicated Acres 240	¹³ Joint or Infill	¹⁴ Consolidation Code	¹⁵ Order No.
---------------------------------------------	-------------------------------	----------------------------------	-------------------------

No allowable will be assigned to this completion until all interest have been consolidated or a non-standard unit has been approved by the division.



GEODETTIC DATA
NAD 83 GRID - NM EAST
SURFACE LOCATION (SL)
N 435032.3 - E 750744.5
LAT: 32.1969180° N
LONG: 103.6563568° W

KICK OFF POINT (KOP)
POINT OF PENETRATION (PP)
50' FSL - 927' FEL (SEC. 22)
N 435680.5 - E 750555.8
LAT: 32.1959541° N
LONG: 103.6569740° W
MD: 10510.0 - TVD: 10483.9

FIRST TAKE POINT (FTP)
388' FSL - 984' FEL (SEC. 22)
N 436017.8 - E 750518.4
LAT: 32.1968820° N
LONG: 103.6570946° W
MD: 11113.0 - TVD: 10930.9

LAST TAKE POINT (LTP)
2459' FSL - 992' FEL (SEC. 15)
N 443368.7 - E 750448.5
LAT: 32.2170888° N
LONG: 103.6571711° W
MD: 18470.0 - TVD: 10934.8

EXIT POINT - BOTTOM HOLE (EP/BH)
N 443493.7 - E 750447.5
LAT: 32.2174323° N
LONG: 103.6571651° W
MD: 18595.0 - TVD: 10934.3

CORNER DATA
NAD 83 GRID - NM EAST
A: FOUND BRASS CAP "1916"
N 435588.7 - E 746196.0
B: FOUND BRASS CAP "1916"
N 438228.5 - E 746178.8
C: FOUND BRASS CAP "1916"
N 440869.0 - E 746166.1
D: FOUND BRASS CAP "1916"
N 443506.9 - E 746153.2
E: FOUND BRASS CAP "1916"
N 446147.2 - E 746140.6
F: CALCULATED CORNER
N 446198.7 - E 751424.1
G: FOUND BRASS CAP "1916"
N 443558.2 - E 751437.1
H: FOUND BRASS CAP "1916"
N 440919.2 - E 751453.4
I: FOUND BRASS CAP "1916"
N 438277.2 - E 751468.7
J: FOUND BRASS CAP "1916"
N 435639.5 - E 751482.4
K: FOUND BRASS CAP "1916"
N 440896.2 - E 748810.3
CALCULATED POINTS
1: N 435628.8 - E 750160.8
2: N 440907.7 - E 750131.9
3: N 443545.4 - E 750117.6

¹⁷ OPERATOR CERTIFICATION

I hereby certify that the information contained herein is true and complete to the best of my knowledge and belief, and that this organization either owns a working interest or unleased mineral interest in the land including the proposed bottom hole location or has a right to drill this well at this location pursuant to a contract with an owner of such a mineral or working interest, or to a voluntary pooling agreement or a compulsory pooling order heretofore entered by the division.

Signature: Reesa Fisher Date: 12/10/19
Printed Name: REESEA FISHER
E-mail Address: Reesa.Fisher@apachecorp.com

¹⁸ SURVEYOR CERTIFICATION

I hereby certify that the well location shown on this plat was plotted from field notes of actual surveys made by me or under my supervision, and that the same is true and correct to the best of my belief.

8-29-2019

Date of Survey

Signature and Seal of Professional Surveyor

10034

Certificate Number

REV. 10/31/19 - KOP-FTP-LTP

Job No.: LS1805674AD