

District I  
1625 N. French Dr., Hobbs, NM 88240  
Phone: (575) 393-6161 Fax: (575) 393-0720  
District II  
811 S. First St., Artesia, NM 88210  
Phone: (575) 748-1283 Fax: (575) 748-9720  
District III  
1000 Rio Brazos Road, Aztec, NM 87410  
Phone: (505) 334-6178 Fax: (505) 334-6170  
District IV  
1220 S. St. Francis Dr., Santa Fe, NM 87505  
Phone: (505) 476-3460 Fax: (505) 476-3462

State of New Mexico  
Energy, Minerals & Natural Resources  
Department  
OIL CONSERVATION DIVISION  
1220 South St. Francis Dr.  
Santa Fe, NM 87505

FORM C-102

Revised August 1, 2011

Submit one copy to appropriate

District Office

☐ AMENDED REPORT

WELL LOCATION AND ACREAGE DEDICATION PLAT

|   |   |                                 |   |
|---|---|---------------------------------|---|
| <sup>1</sup> API Number<br>30-025-45216 |   | <sup>2</sup> Pool Code<br>97903 | <sup>3</sup> Pool Name<br>WC025 G08 S253235G; LOWER BONE SPRING |
| <sup>4</sup> Property Code<br>322428    | <sup>5</sup> Property Name<br>FEARLESS 23 FED COM |                                 | <sup>6</sup> Well Number<br>#507H                               |
| <sup>7</sup> GRID No.<br>7377           | <sup>8</sup> Operator Name<br>EOG RESOURCES, INC. |                                 | <sup>9</sup> Elevation<br>3431'                                 |

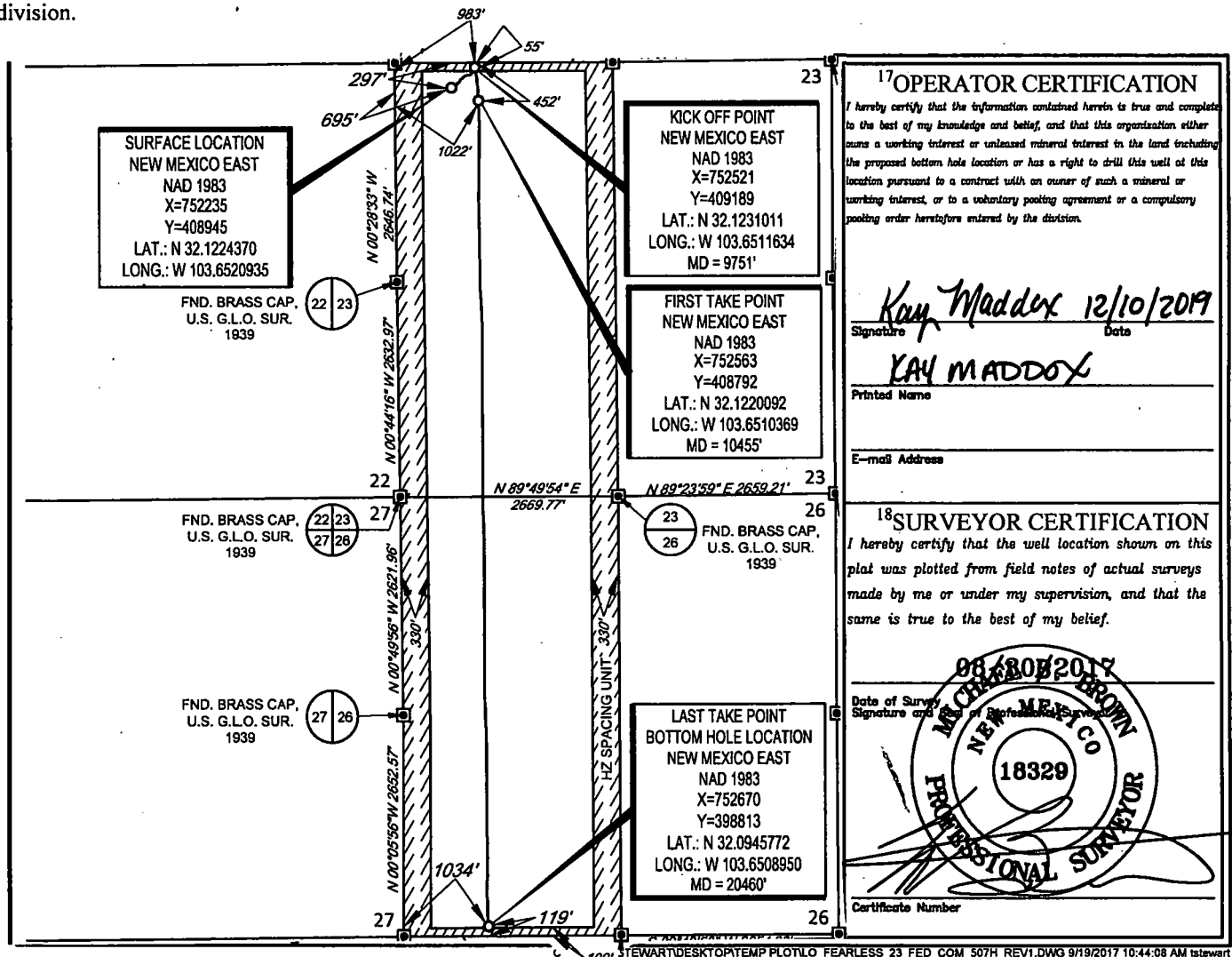
<sup>10</sup>Surface Location

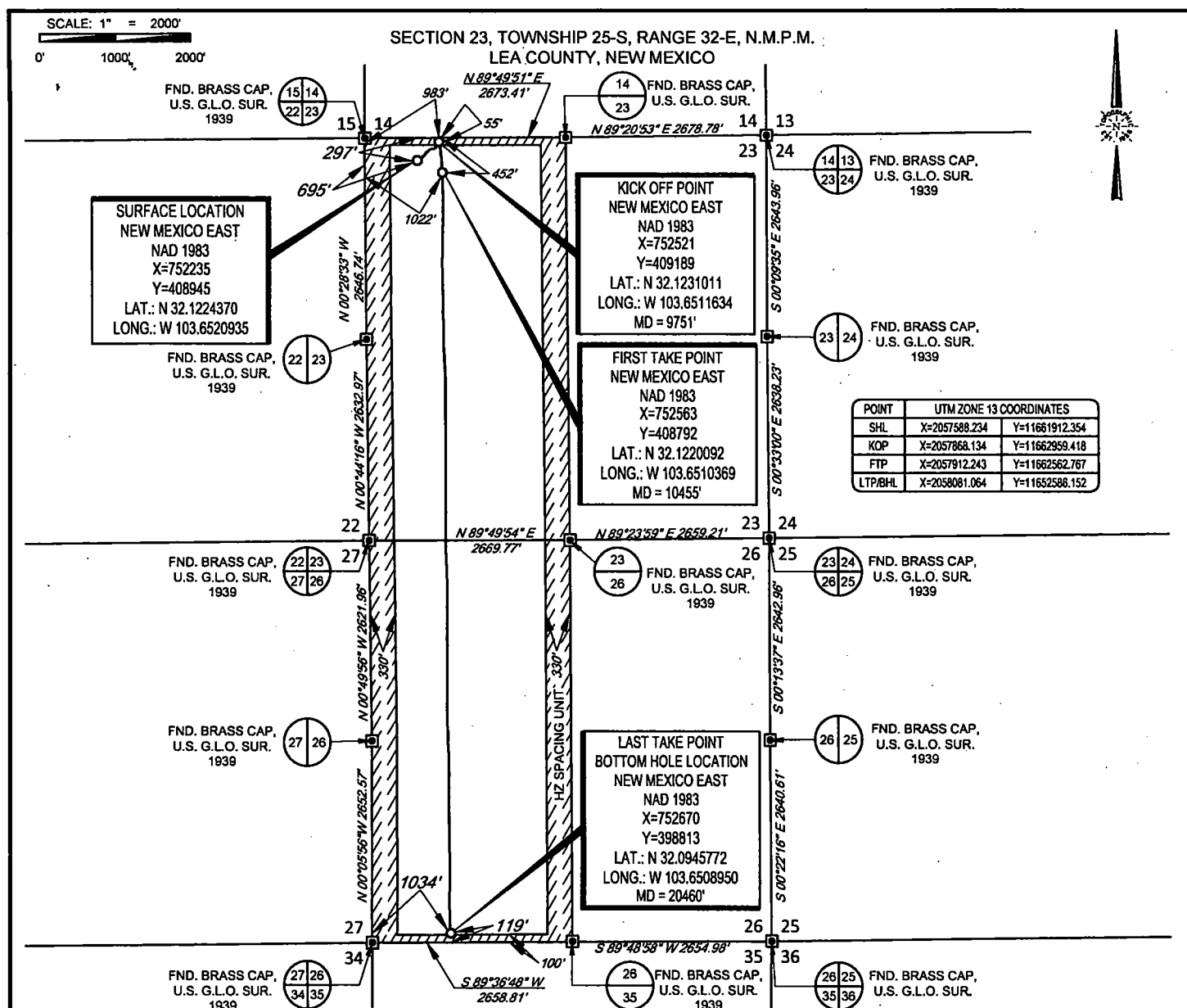
| UL or lot no. | Section | Township | Range | Lot Idn | Feet from the | North/South line | Feet from the | East/West line | County |
|---------------|---------|----------|-------|---------|---------------|------------------|---------------|----------------|--------|
| D             | 23      | 25-S     | 32-E  | -       | 297'          | NORTH            | 695'          | WEST           | LEA    |

| UL or lot no. | Section | Township | Range | Lot Idn | Feet from the | North/South line | Feet from the | East/West line | County |
|---------------|---------|----------|-------|---------|---------------|------------------|---------------|----------------|--------|
| M             | 26      | 25-S     | 32-E  | -       | 119'          | SOUTH            | 1034'         | WEST           | LEA    |

|                                      |                               |                                  |                         |
|--------------------------------------|-------------------------------|----------------------------------|-------------------------|
| <sup>12</sup> Dedicated Acres<br>640 | <sup>13</sup> Joint or Infill | <sup>14</sup> Consolidation Code | <sup>15</sup> Order No. |
|--------------------------------------|-------------------------------|----------------------------------|-------------------------|

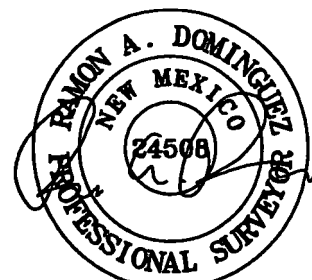
No allowable will be assigned to this completion until all interests have been consolidated or a non-standard unit has been approved by the division.





**TOPOGRAPHIC**  
LOYALTY INNOVATION LEGACY

1400 EVERMAN PARKWAY, Ste. 146 • FT. WORTH, TEXAS 76140  
TELEPHONE: (817) 744-7512 • FAX (817) 744-7554  
2903 NORTH BIG SPRING • MIDLAND, TEXAS 79705  
TELEPHONE: (432) 682-1653 OR (800) 767-1653 • FAX (432) 682-1743  
WWW.TOPOGRAPHIC.COM



Ramon A. Dominguez, P.S. No. 24508  
NOVEMBER 12, 2019

**Geog resources, Inc.**

|  |           |  |  |
|--|-----------|--|--|
| FEARLESS 23 FED COM<br>507H<br>AS-COMplete | REVISION: |  | NOTES:<br>1. ORIGINAL DOCUMENT SIZE: 8.5" X 11"<br>2. ALL BEARINGS, DISTANCES, AND COORDINATE VALUES CONTAINED HEREIN ARE GRID BASED UPON THE NEW MEXICO COORDINATE SYSTEM OF 1983, EAST ZONE, U.S. SURVEY FEET.<br>3. THIS WELL LOCATION SHOWN HEREON HAS BEEN SURVEYED ON THE GROUND UNDER MY SUPERVISION AND PREPARED ACCORDING TO THE EVIDENCE FOUND AT THE TIME OF SURVEY, AND DATA PROVIDED BY EOG RESOURCES, INC. THIS CERTIFICATION IS MADE AND LIMITED TO THOSE PERSONS OR ENTITIES SHOWN ON THE FACE OF THIS PLAT AND IS NON-TRANSFERABLE. THIS SURVEY IS CERTIFIED FOR THIS TRANSACTION ONLY. |
|  |           |  |  |
|  |           |  |  |
|  |           |  |  |
|  |           |  |  |
| DATE: 11/12/19                             |           |  |  |
| FILE:AD_FEARLESS_23_FED_COM_507H           |           |  |  |
| DRAWN BY: H.B.                             |           |  |  |
| SHEET: 1 OF 1                              |           |  |  |

Intent ☐ As Drilled ☒ XXX

|                                      |  |   |                     |
|--------------------------------------|--|---|---------------------|
| API #<br>30-025-45216                |  |   |                     |
| Operator Name:<br>EOG RESOURCES, INC |  | Property Name:<br>FEARLESS 23 FEDERAL COM | Well Number<br>507H |

Kick Off Point (KOP)

|                        |               |                 |              |     |                          |                   |             |                  |               |
|------------------------|---------------|-----------------|--------------|-----|--------------------------|-------------------|-------------|------------------|---------------|
| UL<br>D                | Section<br>23 | Township<br>25S | Range<br>32E | Lot | Feet<br>55               | From N/S<br>NORTH | Feet<br>983 | From E/W<br>WEST | County<br>LEA |
| Latitude<br>32.1231011 |               |                 |              |     | Longitude<br>103.6511634 |                   |             |                  | NAD<br>1983   |

First Take Point (FTP)

|                        |               |                 |              |     |                          |                   |              |                  |               |
|------------------------|---------------|-----------------|--------------|-----|--------------------------|-------------------|--------------|------------------|---------------|
| UL<br>D                | Section<br>23 | Township<br>25S | Range<br>32E | Lot | Feet<br>452              | From N/S<br>NORTH | Feet<br>1022 | From E/W<br>WEST | County<br>LEA |
| Latitude<br>32.1220092 |               |                 |              |     | Longitude<br>103.6510369 |                   |              |                  | NAD<br>1983   |

Last Take Point (LTP)

|                        |               |                 |              |     |                          |                   |              |                  |               |
|------------------------|---------------|-----------------|--------------|-----|--------------------------|-------------------|--------------|------------------|---------------|
| UL<br>M                | Section<br>26 | Township<br>25S | Range<br>32E | Lot | Feet<br>119              | From N/S<br>SOUTH | Feet<br>1034 | From E/W<br>WEST | County<br>LEA |
| Latitude<br>32.0945772 |               |                 |              |     | Longitude<br>103.6508950 |                   |              |                  | NAD<br>1983   |

Is this well the defining well for the Horizontal Spacing Unit? ☒ YES

Is this well an infill well? ☐ NO

If infill is yes please provide API if available, Operator Name and well number for Defining well for Horizontal Spacing Unit.

|                                      |  |                |             |
|--------------------------------------|--|----------------|-------------|
| API #                                |  |                |             |
| Operator Name:<br>EOG RESOURCES, INC |  | Property Name: | Well Number |

KZ 06/29/2018