

District I
1625 N. French Dr., Hobbs, NM 88240
Phone: (575) 393-6161 Fax: (575) 393-0720
District II
811 S. First St., Artesia, NM 88210
Phone: (575) 748-1283 Fax: (575) 748-9720
District III
1000 Rio Brazos Road, Aztec, NM 87410
Phone: (505) 334-6178 Fax: (505) 334-6170
District IV
1220 S. St. Francis Dr., Santa Fe, NM 87505
Phone: (505) 476-3460 Fax: (505) 476-3462

State of New Mexico
Energy, Minerals & Natural Resources Department
OIL CONSERVATION DIVISION
1220 South St. Francis Dr.
Santa Fe, NM 87505
DEC 19 2019

Form C-102
Revised August 1, 2011
Submit one copy to appropriate
District Office

RECEIVED

☒ AMENDED REPORT

As Drilled

WELL LOCATION AND ACREAGE DEDICATION PLAT

1 API Number 30-025-45400		2 Pool Code 28435		3 Pool Name Grama Ridge, Bone Spring NE K5	
4 Property Code 322991		5 Property Name Dolly Vander 25/24 B2ED STATE COM			6 Well Number 1H
7 OGRID NO. 14744		8 Operator Name MEWBOURNE OIL COMPANY			9 Elevation 3697'

10 Surface Location

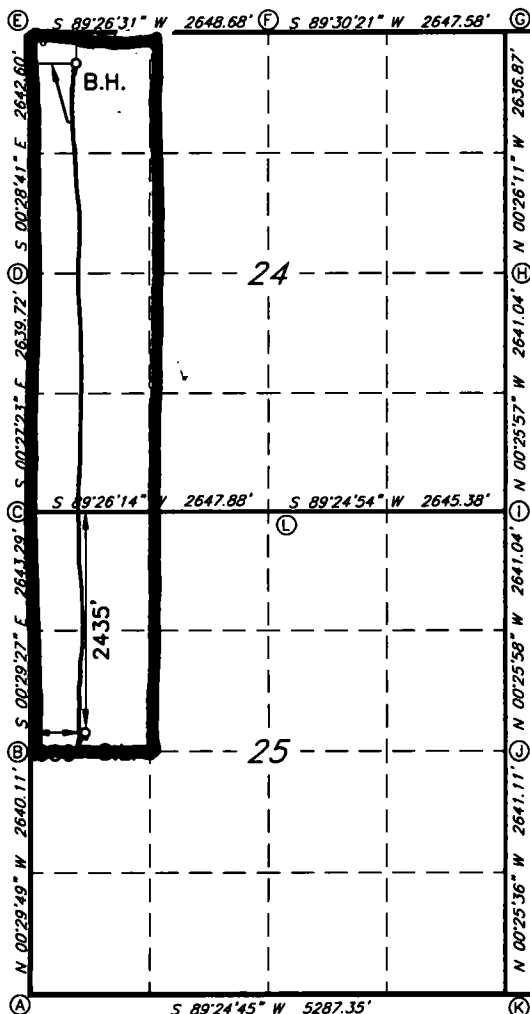
UL or lot no. E	Section 25	Township 21S	Range 34E	Lot Idn	Feet from the 2435	North/South line NORTH	Feet From the 600	East/West line WEST	County LEA
--------------------	---------------	-----------------	--------------	---------	-----------------------	---------------------------	----------------------	------------------------	---------------

11 Bottom Hole Location If Different From Surface

UL or lot no. D	Section 24	Township 21S	Range 34E	Lot Idn 99	Feet from the 499'	North/South line NORTH	Feet from the 499'	East/West line WEST	County LEA
--------------------	---------------	-----------------	--------------	---------------	-----------------------	---------------------------	-----------------------	------------------------	---------------

12 Dedicated Acres 240	13 Joint or Infill	14 Consolidation Code	15 Order No.
---------------------------	--------------------	-----------------------	--------------

No allowable will be assigned to this completion until all interest have been consolidated or a non-standard unit has been approved by the division.



GEODETIC DATA
NAD 83 GRID - NM EAST
SURFACE LOCATION
N 528823.4 - E 819943.5
LAT: 32.4505611° N
LONG: 103.4301410° W
BOTTOM HOLE
N 536208.1 - E 819782.4
LAT: 32.4708614° N
LONG: 103.4304608° W

CORNER DATA
NAD 83 GRID - NM EAST
A: FOUND BRASS CAP "1913"
N 525969.8 - E 819368.3
B: FOUND BRASS CAP "1913"
N 528609.3 - E 819345.4
C: FOUND BRASS CAP "1913"
N 531252.0 - E 819322.8
D: FOUND BRASS CAP "1913"
N 533891.2 - E 819301.8
E: FOUND BRASS CAP "1913"
N 536533.2 - E 819279.7
F: FOUND BRASS CAP "1913"
N 536559.0 - E 821927.8
G: FOUND 3/4" REBAR
N 536581.8 - E 824574.8
H: FOUND 9"x3"x5"
LIMESTONE ROCK
N 533945.5 - E 824594.9
I: CALCULATED CORNER
N 531305.0 - E 824614.8
J: FOUND 8"x6"x4"
LIMESTONE ROCK
N 528664.5 - E 824634.8
K: FOUND 3/4" REBAR
N 526024.0 - E 824654.4
L: FOUND BRASS CAP "1913"
N 531278.0 - E 821970.1

17 OPERATOR CERTIFICATION

I hereby certify that the information contained herein is true and complete to the best of my knowledge and belief, and that this organization either owns a working interest or unleased mineral interest in the land including the proposed bottom hole location or has a right to drill this well at this location pursuant to a contract with an owner of such a mineral or working interest, or to a voluntary pooling agreement or a compulsory pooling order heretofore entered by the division.

Signature: Jackie Lathan Date: 12/11/19
Printed Name: Jackie Lathan
E-mail Address:

18 SURVEYOR CERTIFICATION

I hereby certify that the well location shown on this plat was plotted from field notes of actual surveys made by me or under my supervision, and that the same is true and correct to the best of my belief.

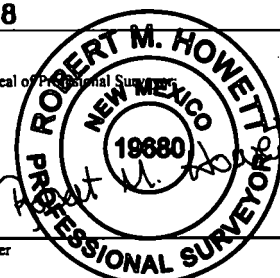
5-5-18

Date of Survey

Signature and Seal of Professional Surveyor

19680

Certificate Number



RRC - Job No.:

LS1804571

Intent ☐ As Drilled ☒

API #
30-025-45400

Operator Name: Mewbourne Oil Company	Property Name: Dolly Varden 25/24 B2ED State Com	Well Number #1H
---	---	--------------------

Kick Off Point (KOP)

UL E	Section 25	Township 24S	Range 34E	Lot	Feet 2617	From N/S N	Feet 542	From E/W W	County Lea
Latitude 32.4500561					Longitude -103.4303350			NAD 83	

First Take Point (FTP)

UL E	Section 25	Township 24S	Range 34E	Lot	Feet 2205	From N/S N	Feet 456	From E/W W	County Lea
Latitude 32.4511967					Longitude -103.4306025			NAD 83	

Last Take Point (LTP)

UL D	Section 24	Township 24S	Range 34E	Lot	Feet 109	From N/S N	Feet 499	From E/W W	County Lea
Latitude 32.4714792					Longitude -103.4304597			NAD 83	

Is this well the defining well for the Horizontal Spacing Unit? ☒

Is this well an infill well? ☐

If infill is yes please provide API if available, Operator Name and well number for Defining well for Horizontal Spacing Unit.

API #	Operator Name:	Property Name:	Well Number

KZ 06/29/2018