

District I
1625 N. French Dr., Hobbs, NM 88240
Phone: (575) 393-6161 Fax: (575) 393-0720
District II
811 S. First St., Artesia, NM 88210
Phone: (575) 748-1283 Fax: (575) 748-9720
District III
1000 Rio Brazos Road, Aztec, NM 87410
Phone: (505) 334-6178 Fax: (505) 334-6170
District IV
1220 S. St. Francis Dr., Santa Fe, NM 87505
Phone: (505) 476-3460 Fax: (505) 476-3462

State of New Mexico
Energy, Minerals & Natural Resources
Department
OIL CONSERVATION DIVISION
1220 South St. Francis Dr.
Santa Fe, NM 87505

HOBBS OCD

DEC 23 2019

RECEIVED

FORM C-102

Revised August 1, 2011

Submit one copy to appropriate

District Office

☐ AMENDED REPORT

WELL LOCATION AND ACREAGE DEDICATION PLAT

¹ API Number 30-025-44483		² Pool Code 17000 95098		³ Pool Name WC-025 G-09 S243532M;WOLFBONE	
⁴ Property Code 320789		⁵ Property Name BIGGERS FED COM			⁶ Well Number #214H
⁷ GRID No. 228937		⁸ Operator Name MATADOR PRODUCTION COMPANY			⁹ Elevation 3332'

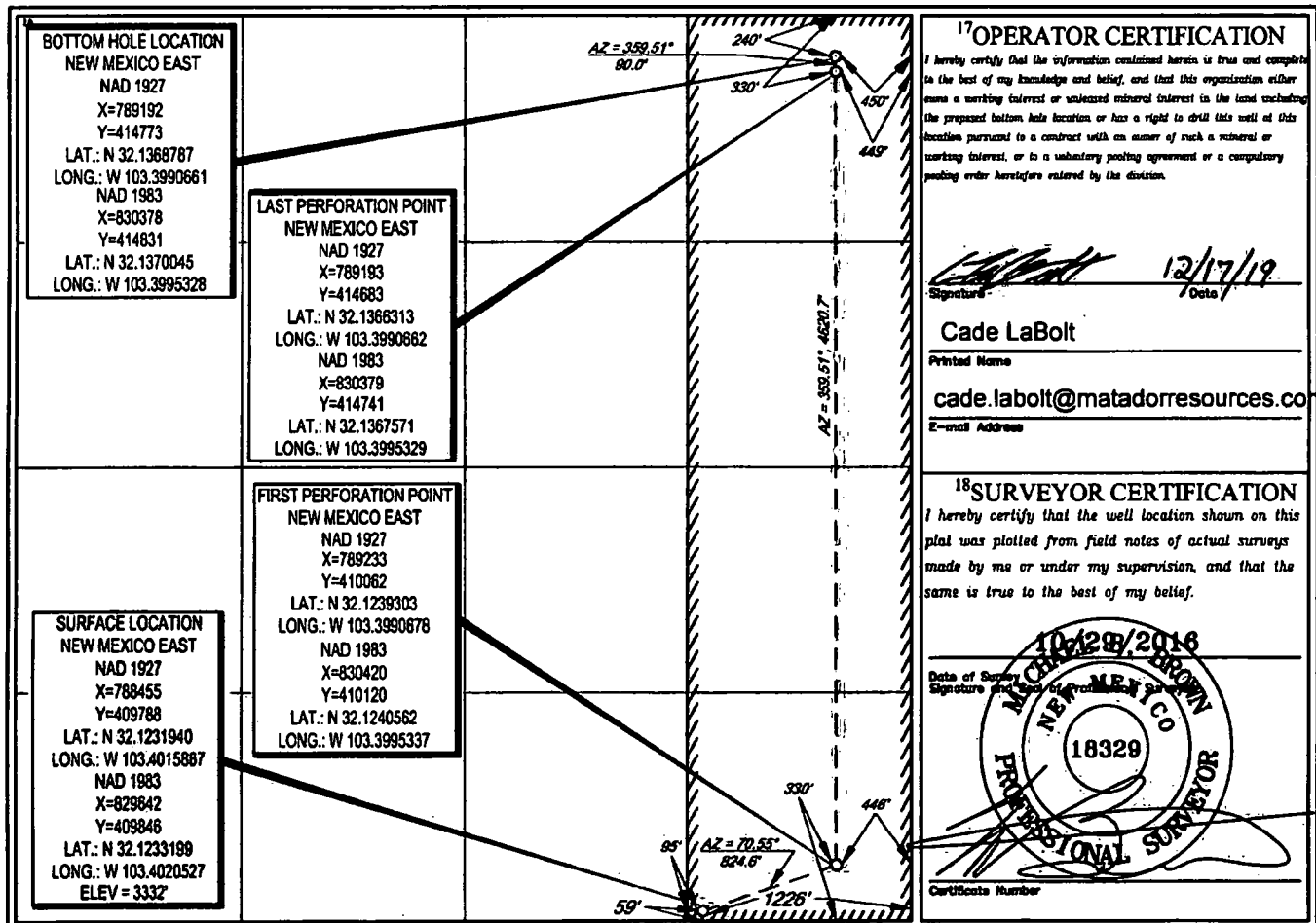
¹⁰Surface Location

UL or lot no.	Section	Township	Range	Lot Idn	Feet from the	North/South line	Feet from the	East/West line	County
P	18	25-S	35-E	-	59'	SOUTH	1226'	EAST	LEA

UL or lot no.	Section	Township	Range	Lot Idn	Feet from the	North/South line	Feet from the	East/West line	County
A	18	25-S	35-E	-	240'	NORTH	450'	EAST	LEA

¹¹ Dedicated Acres 160	¹² Joint or Infill	¹³ Consolidation Code	¹⁴ Order No.
--------------------------------------	-------------------------------	----------------------------------	-------------------------

No allowable will be assigned to this completion until all interests have been consolidated or a non-standard unit has been approved by the division.



District I
1625 N. French Dr., Hobbs, NM 88240
Phone: (575) 393-6161 Fax: (575) 393-0720
District II
811 S. First St., Artesia, NM 88210
Phone: (575) 748-1283 Fax: (575) 748-9720
District III
1000 Rio Brazos Road, Aztec, NM 87410
Phone: (505) 334-6178 Fax: (505) 334-6170
District IV
1220 S. St. Francis Dr., Santa Fe, NM 87505
Phone: (505) 476-3460 Fax: (505) 476-3462

State of New Mexico
Energy, Minerals & Natural Resources
Department
OIL CONSERVATION DIVISION
1220 South St. Francis Dr.
Santa Fe, NM 87505

FORM C-102
Revised August 1, 2011
Submit one copy to appropriate
District Office

☐ AMENDED REPORT

WELL LOCATION AND ACREAGE DEDICATION PLAT

¹ API Number		² Pool Code		³ Pool Name	
⁴ Property Code		⁵ Property Name BIGGERS FED COM			⁶ Well Number #214H
⁷ GRID No.		⁸ Operator Name MATADOR PRODUCTION COMPANY			⁹ Elevation 3332'

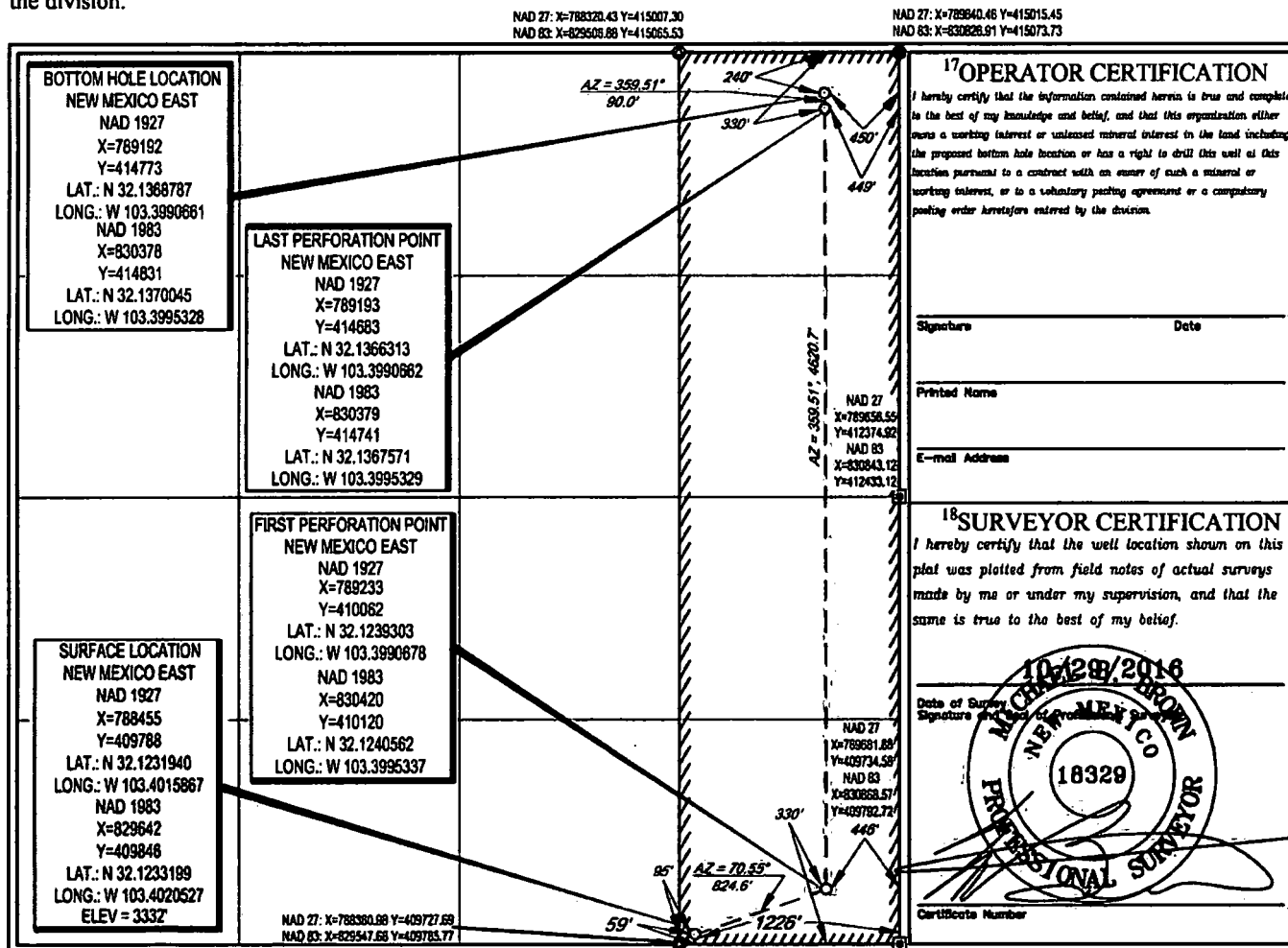
¹⁰Surface Location

UL or lot no.	Section	Township	Range	Lot Idn	Feet from the	North/South line	Feet from the	East/West line	County
P	18	25-S	35-E	-	59'	SOUTH	1226'	EAST	LEA

UL or lot no.	Section	Township	Range	Lot Idn	Feet from the	North/South line	Feet from the	East/West line	County
A	18	25-S	35-E	-	240'	NORTH	450'	EAST	LEA

¹¹ Dedicated Acres 160	¹² Joint or Infill	¹³ Consolidation Code	¹⁴ Order No.
---	-------------------------------	----------------------------------	-------------------------

No allowable will be assigned to this completion until all interests have been consolidated or a non-standard unit has been approved by the division.



[illegible]

SECTION 18 TWP 25-S RGE 35-E SURVEY N.M.P.M.
COUNTY LEA STATE NM ELEVATION 3332'
DESCRIPTION 59' FSL & 1226' FEL

LATITUDE N 32.1233199 LONGITUDE W 103.4020527



SCALE: 1" = 2000'

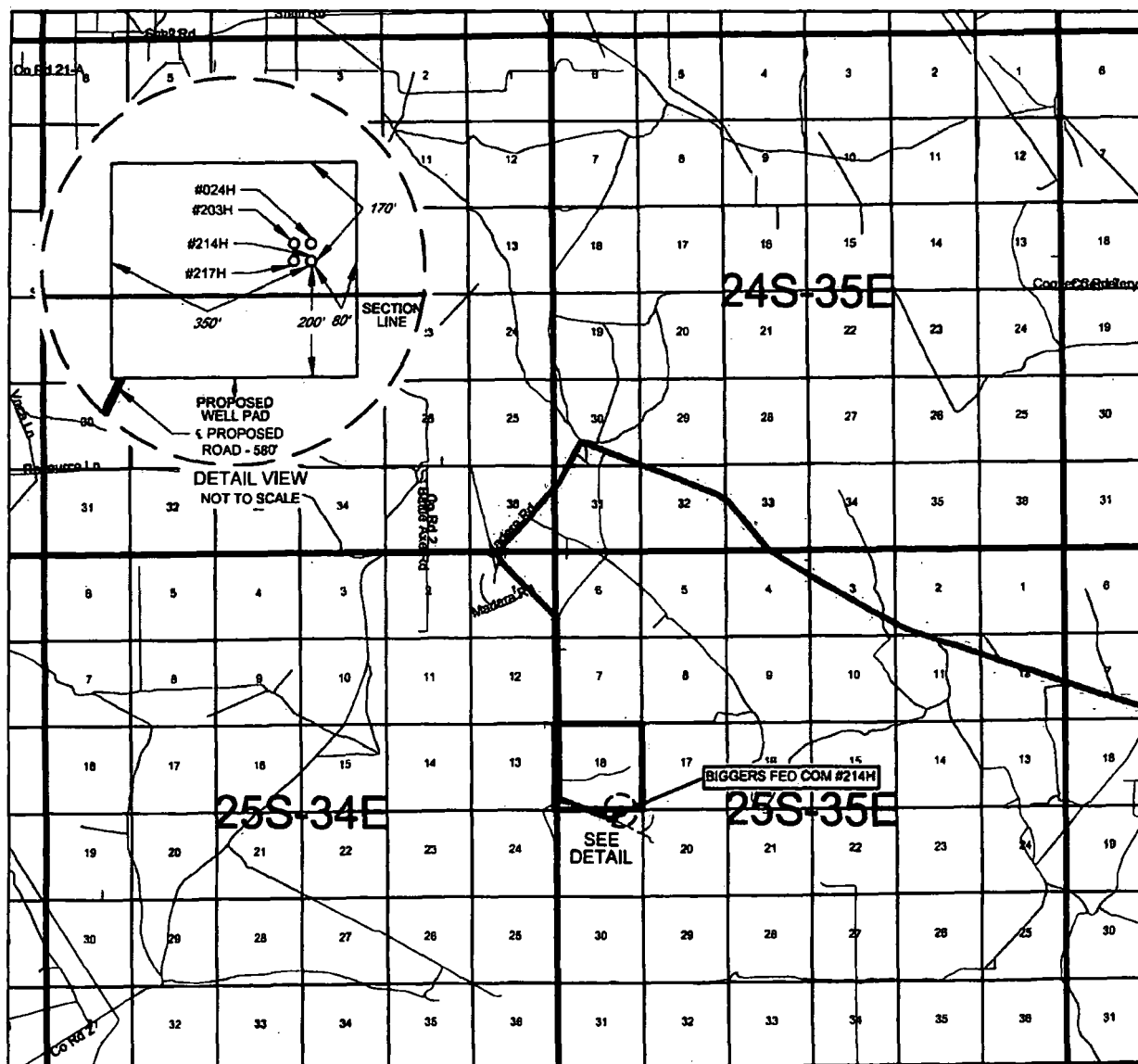
0' 1000' 2000'

ALL BEARINGS, DISTANCES, AND COORDINATE VALUES CONTAINED HEREON ARE GRID BASED UPON THE NEW MEXICO STATE PLANE COORDINATE SYSTEM, EAST ZONE OF THE NORTH AMERICAN DATUM 1983, U.S. SURVEY FEET.



1400 EVERMAN PARKWAY, Ste. 197 • FT. WORTH, TEXAS 76140
TELEPHONE: (817) 744-7512 • FAX (817) 744-7548
2903 NORTH BIG SPRING • MIDLAND, TEXAS 79705
TELEPHONE: (432) 682-1653 OR (800) 787-1653 • FAX (432) 682-1743
WWW.TOPOGRAPHIC.COM

VICINITY MAP



LEASE NAME & WELL NO.: BIGGERS FED COM #214H

SECTION 18 TWP 25-S RGE 35-E SURVEY N.M.P.M.

COUNTY LEA STATE NM

DESCRIPTION 59' FSL & 1226' FEL

DISTANCE & DIRECTION

FROM INT. OF NM-128 W. & NM-205 N GO WEST ON NM-128 ±13.8 MILES. THENCE SOUTH (LEFT) ON BATTLE AXE RD. ±0.3 MILES. THENCE CONTINUING SOUTH ON MADERA RD. ±1.4 MILES, THENCE SOUTHEAST (LEFT) ON LEASE RD. ±3.1 MILES, THENCE EAST (LEFT) ON LEASE RD. ±0.6 MILES, THENCE NORTHEAST (LEFT) ON A PROPOSED RD. ±580 FEET TO A POINT ±400 FEET SOUTHWEST OF THE LOCATION.

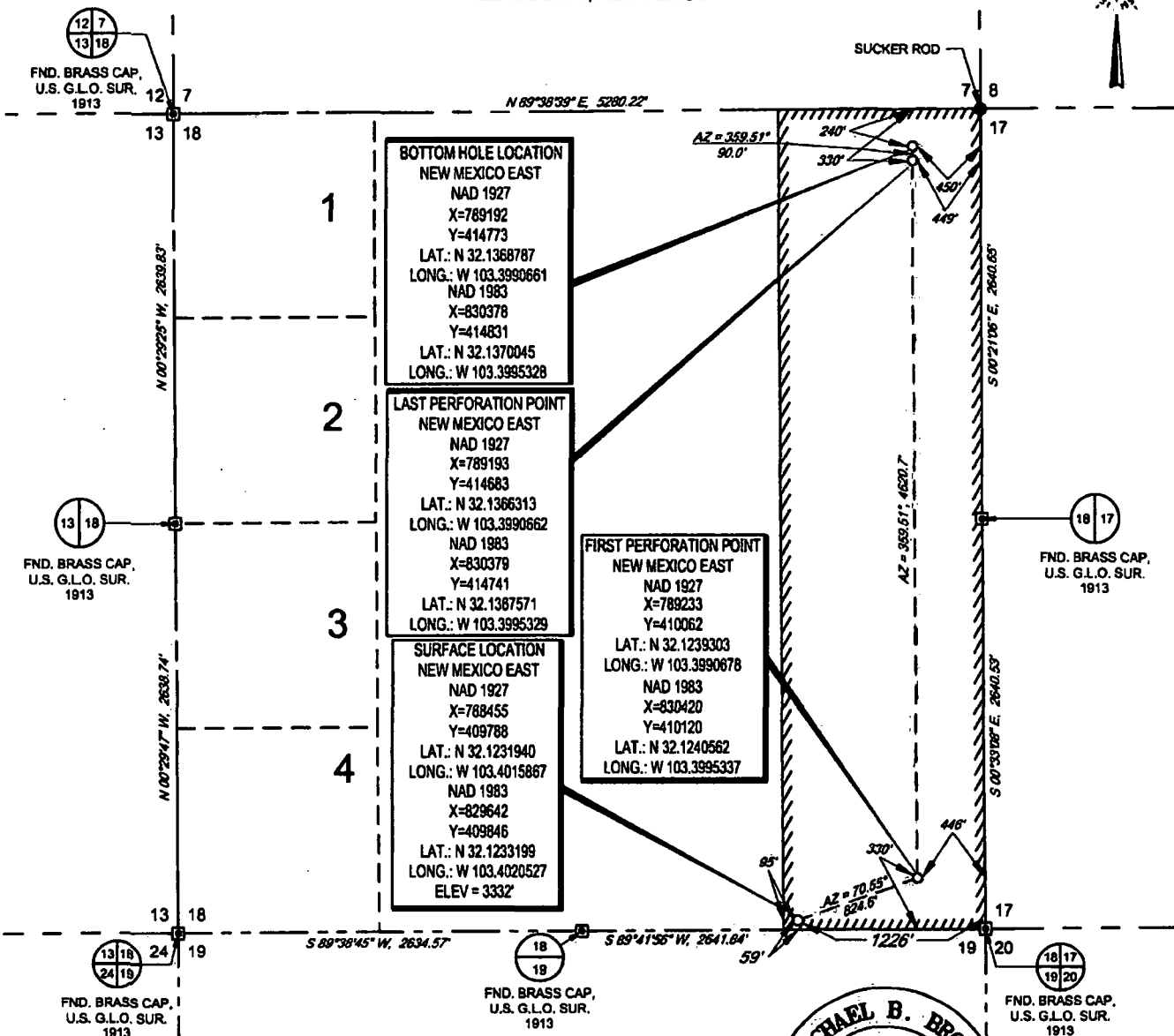
THIS BASEMENT/SERVITUDE LOCATION SHOWN HEREON HAS BEEN SURVEYED ON THE GROUND UNDER MY SUPERVISION AND PREPARED ACCORDING TO THE EVIDENCE FOUND AT THE TIME OF SURVEY, AND DATA PROVIDED BY MATADOR PRODUCTION COMPANY. THIS CERTIFICATION IS MADE AND LIMITED TO THOSE PERSONS OR ENTITIES SHOWN ON THE FACE OF THIS PLAT AND IS NON-TRANSFERABLE. THIS SURVEY IS CERTIFIED FOR THIS TRANSACTION ONLY.

ALL BEARINGS, DISTANCES, AND COORDINATE VALUES CONTAINED HEREON ARE GRID BASED UPON THE NEW MEXICO STATE PLANE COORDINATE SYSTEM, EAST ZONE OF THE NORTH AMERICAN DATUM 1983, U.S. SURVEY FEET.





SECTION 18, TOWNSHIP 25-S, RANGE 35-E, N.M.P.M.
LEA COUNTY, NEW MEXICO



LEASE NAME & WELL NO.: BIGGERS FED COM #214H

SECTION 18 TWP 25-S RGE 35-E SURVEY N.M.P.M.

COUNTY LEA STATE NM

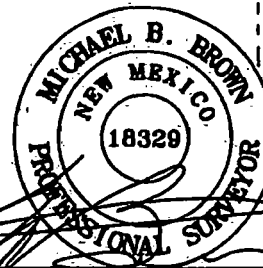
DESCRIPTION 59' FSL & 1226' FEL

DISTANCE & DIRECTION

FROM INT. OF NM-128 W. & NM-205 N GO WEST ON NM-128 +13.8 MILES. THENCE SOUTH (LEFT) ON BATTLE AXE RD. +0.3 MILES. THENCE CONTINUING SOUTH ON MADERA RD. +1.4 MILES, THENCE SOUTHEAST (LEFT) ON LEASE RD. +3.1MILES. THENCE EAST (LEFT) ON LEASE RD. +0.6 MILES, THENCE NORTHEAST (LEFT) ON A PROPOSED RD. +580 FEET TO A POINT +400 FEET SOUTHWEST OF THE LOCATION.

ALL BEARINGS, DISTANCES, AND COORDINATE VALUES CONTAINED HEREON ARE GRID BASED UPON THE NEW MEXICO STATE PLANE COORDINATE SYSTEM, EAST ZONE OF THE NORTH AMERICAN DATUM 1983, U.S. SURVEY FEET. THIS EASEMENT/SERVITUDE LOCATION SHOWN HEREON HAS BEEN SURVEYED ON THE GROUND UNDER MY SUPERVISION AND PREPARED ACCORDING TO THE EVIDENCE FOUND AT THE TIME OF SURVEY, AND DATA PROVIDED BY MATADOR PRODUCTION COMPANY. THIS CERTIFICATION IS MADE AND LIMITED TO THOSE PERSONS OR ENTITIES SHOWN ON THE FACE OF THIS PLAT AND IS NON-TRANSFERABLE. THIS SURVEY IS CERTIFIED FOR THIS TRANSACTION ONLY.

AS OF THE DATE OF SURVEY, ALL ABOVE GROUND APPURTENANCES WITHIN 300' OF THE STAKED LOCATION ARE SHOWN HEREON.



Michael Blake Brown, P.S. No. 18329
NOVEMBER 01, 2017



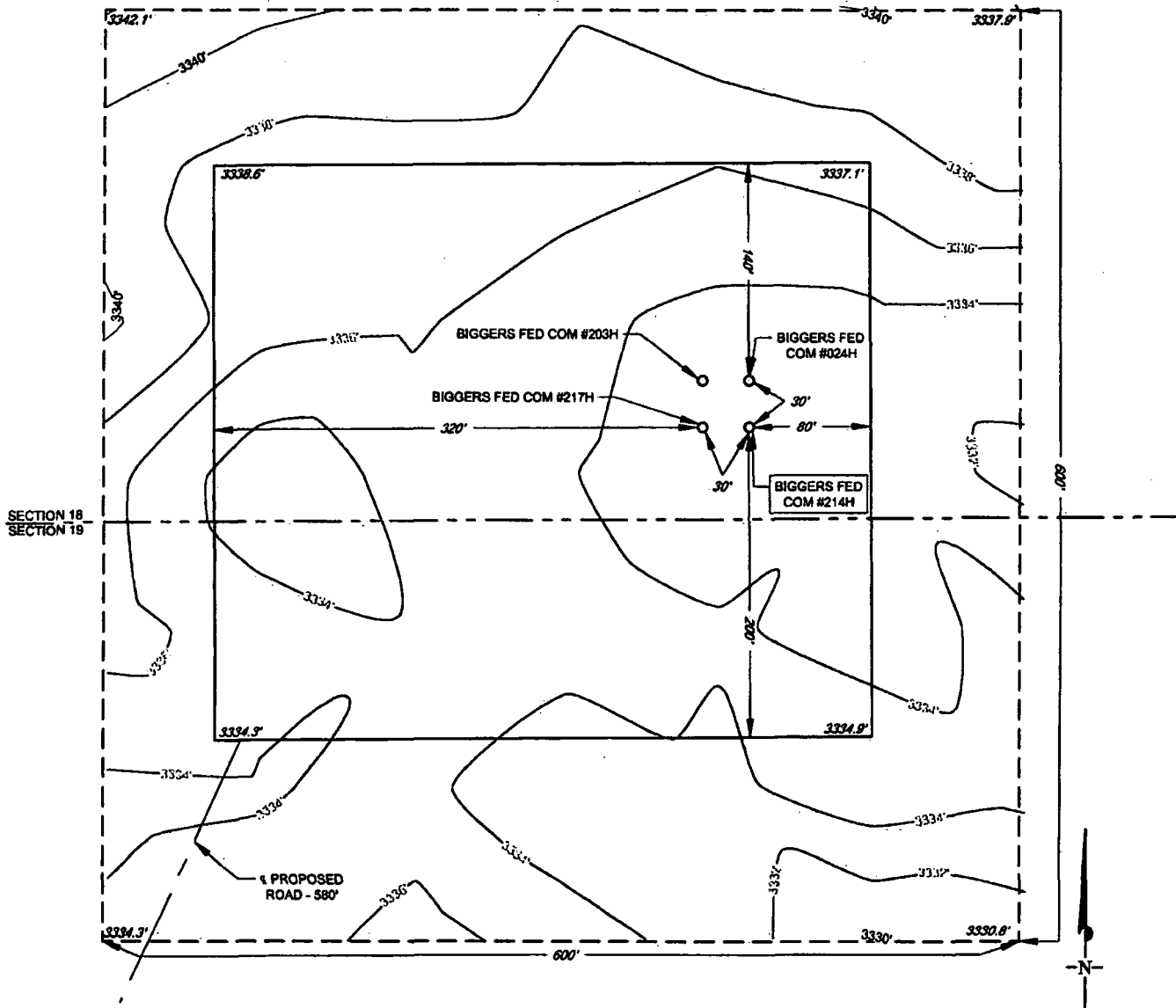
TOPOGRAPHIC
LOYALTY INNOVATION LEGACY

1400 EVERMAN PARKWAY, Ste. 197 • FT. WORTH, TEXAS 76140
TELEPHONE: (817) 744-7512 • FAX (817) 744-7548
2903 NORTH BIG SPRING • MIDLAND, TEXAS 79705
TELEPHONE: (432) 682-1853 OR (800) 787-1853 • FAX (432) 682-1743
WWW.TOPOGRAPHIC.COM



SECTION 18, TOWNSHIP 25-S, RANGE 35-E, N.M.P.M.
LEA COUNTY, NEW MEXICO

DETAIL VIEW
SCALE: 1" = 100'



LEASE NAME & WELL NO.: BIGGERS FED COM #214H
#214H LATITUDE N 32.1233199 #214H LONGITUDE W 103.4020527

SCALE: 1" = 100'
0' 60' 100'

LEGEND

--- ARCH SITE
--- SECTION LINE

ALL BEARINGS, DISTANCES, AND COORDINATE VALUES CONTAINED HEREON ARE GRID BASED UPON THE NEW MEXICO STATE PLANE COORDINATE SYSTEM, EAST ZONE OF THE NORTH AMERICAN DATUM 1983, U.S. SURVEY FEET

THIS PROPOSED PAD SITE LOCATION SHOWN HEREON HAS BEEN SURVEYED ON THE GROUND UNDER MY SUPERVISION AND PREPARED ACCORDING TO THE EVIDENCE FOUND AT THE TIME OF SURVEY, AND DATA PROVIDED BY MATADOR PRODUCTION COMPANY. THIS CERTIFICATION IS MADE AND LIMITED TO THOSE PERSONS OR ENTITIES SHOWN ON THE FACE OF THIS PLAT AND IS NON-TRANSFERABLE. THIS SURVEY IS CERTIFIED FOR THIS TRANSACTION ONLY.

TOPOGRAPHIC
LOYALTY INNOVATION LEGACY

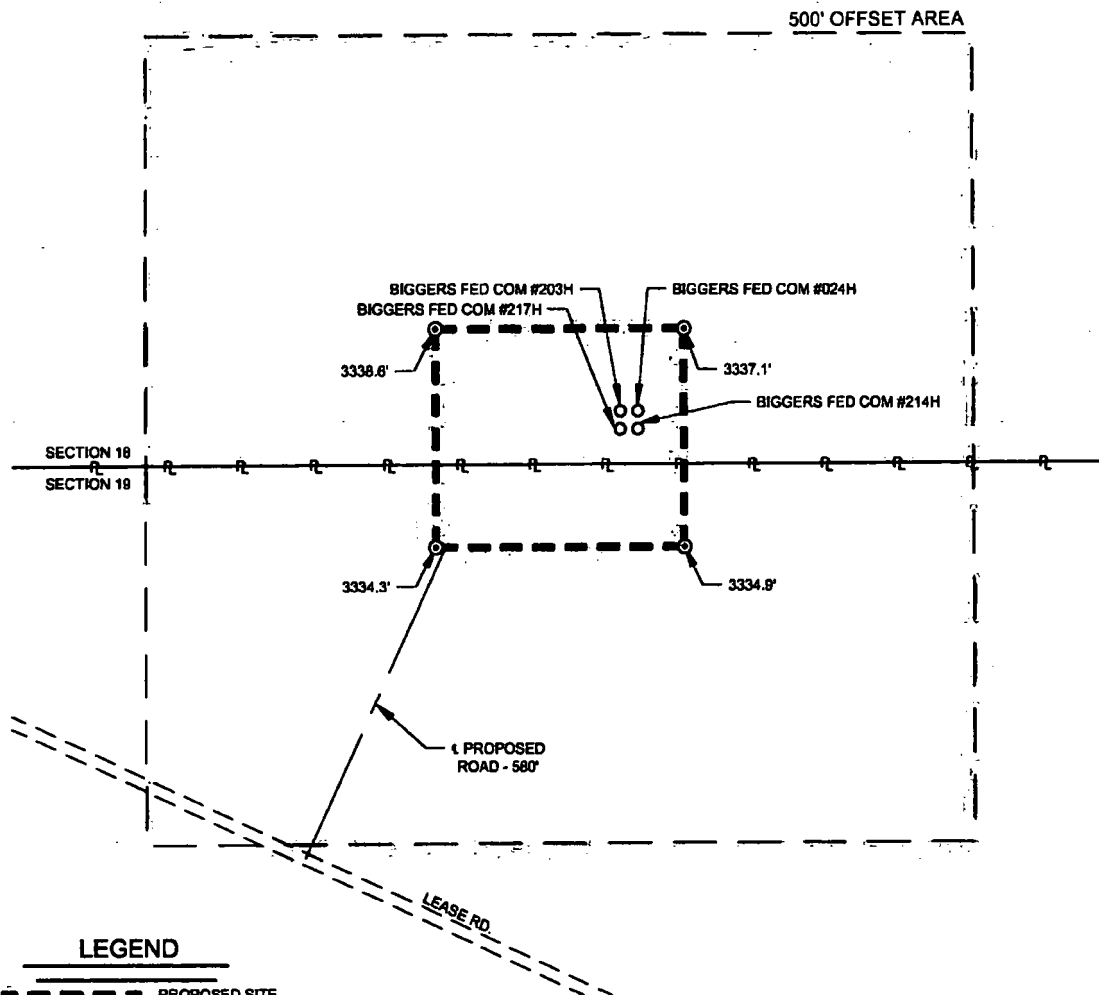
1400 EVERMAN PARKWAY, Ste. 107 • FT. WORTH, TEXAS 76140
TELEPHONE: (817) 744-7512 • FAX (817) 744-7548
2603 NORTH BIG SPRING • MIDLAND, TEXAS 79705
TELEPHONE: (432) 682-1653 OR (800) 767-1853 • FAX (432) 682-1743
WWW.TOPOGRAPHIC.COM

ORIGINAL DOCUMENT SIZE: 8.5" X 11"

S:\SURVEY\MATADOR_RESOURCES\BIGGERS_FED_COM_214H\FINAL_PRODUCTS\LO_BIGGERS_FED_COM_214H_REV1.DWG 11/7/2017 2:08:40 PM ccsston

SCALE: 1" = 300'
0' 150' 300'

SECTION 18, TOWNSHIP 25-S, RANGE 35-E, N.M.P.M.
LEA COUNTY, NEW MEXICO



LEGEND

- PROPOSED SITE
- - - 500' PROXIMITY
- SURVEY/SECTION LINE
- RL TRACT BORDER
- == ROAD WAY
- ⊙ IRON ROD SET
- MONUMENT



TOPOGRAPHIC
LOYALTY INNOVATION LEGACY

1400 EVERMAN PARKWAY, Ste. 197 • FT. WORTH, TEXAS 76140
TELEPHONE: (817) 744-7512 • FAX (817) 744-7549
2805 NORTH BIG SPRING • MIDLAND, TEXAS 79705
TELEPHONE: (432) 682-1853 OR (800) 767-1853 • FAX (432) 682-1743
WWW.TOPOGRAPHIC.COM



Michael Blake Brown, P.S. No. 18329
NOVEMBER 01, 2017

BIGGERS FED COM #214H PROXIMITY MAP	REVISION:		NOTES: 1. ORIGINAL DOCUMENT SIZE: 8.5" X 11" 2. ALL BEARINGS, DISTANCES, AND COORDINATE VALUES CONTAINED HEREIN ARE GRID BASED UPON THE NEW MEXICO STATE PLANE COORDINATE SYSTEM, EAST ZONE, U.S. SURVEY FEET, NORTH AMERICAN DATUM 1983. 3. CERTIFICATION IS MADE ONLY TO THE LOCATION OF THIS EASEMENT, IN RELATION TO THE EVIDENCE FOUND DURING A FIELD SURVEY, MADE ON THE GROUND, UNDER MY SUPERVISION, AND USING DOCUMENTATION PROVIDED BY MATADOR PRODUCTION COMPANY. ONLY UTILITIES/EASEMENTS THAT WERE VISIBLE ON THE DATE OF THIS SURVEY, WITHIN/ADJOINING THIS EASEMENT, HAVE BEEN LOCATED AS SHOWN HEREON OF WHICH I HAVE KNOWLEDGE. THIS CERTIFICATION IS LIMITED TO THOSE PERSONS OR ENTITIES SHOWN ON THE FACE OF THIS PLAT AND IS NON-TRANSFERABLE, AND MADE FOR THIS TRANSACTION ONLY.
	MML	11/01/2017	
DATE: 01/25/2017			
FILE:LO_BIGGERS_FED_COM_214H_REV1			
DRAWN BY: MML			
SHEET: 7 OF 7			