

District I  
1625 N. French Dr., Hobbs, NM 88240  
Phone: (575) 393-6161 Fax: (575) 393-0720

District II  
811 S. First St., Artesia, NM 88210  
Phone: (575) 748-1283 Fax: (575) 748-9720

District III  
1000 Rio Brazos Road, Aztec, NM 87410  
Phone: (505) 334-6178 Fax: (505) 334-6170

District IV  
1220 S. St. Francis Dr., Santa Fe, NM 87505  
Phone: (505) 476-3460 Fax: (505) 476-3462

State of New Mexico  
Energy, Minerals & Natural Resources Department  
OIL CONSERVATION DIVISION  
1220 South St. Francis Dr.  
Santa Fe, NM 87505

Form C-102  
Revised August 1, 2011  
Submit one copy to appropriate  
District Office

☐ AMENDED REPORT  
As-Drilled

**HOBBS OCD**  
**DEC 30 2019**  
**RECEIVED**

WELL LOCATION AND ACREAGE DEDICATION PLAN

<sup>1</sup> API Number 30-025-44687	<sup>2</sup> Pool Code 2220	<sup>3</sup> Pool Name ANTELOPE RIDGE; WOLFCAMP
<sup>4</sup> Property Code	Property Name FLOWMASTER 15 WA FEE	<sup>6</sup> Well Number 14H
<sup>7</sup> OGRID No. 372098	<sup>8</sup> Operator Name MARATHON OIL PERMIAN LLC	<sup>9</sup> Elevation 3518'

<sup>10</sup> Surface Location

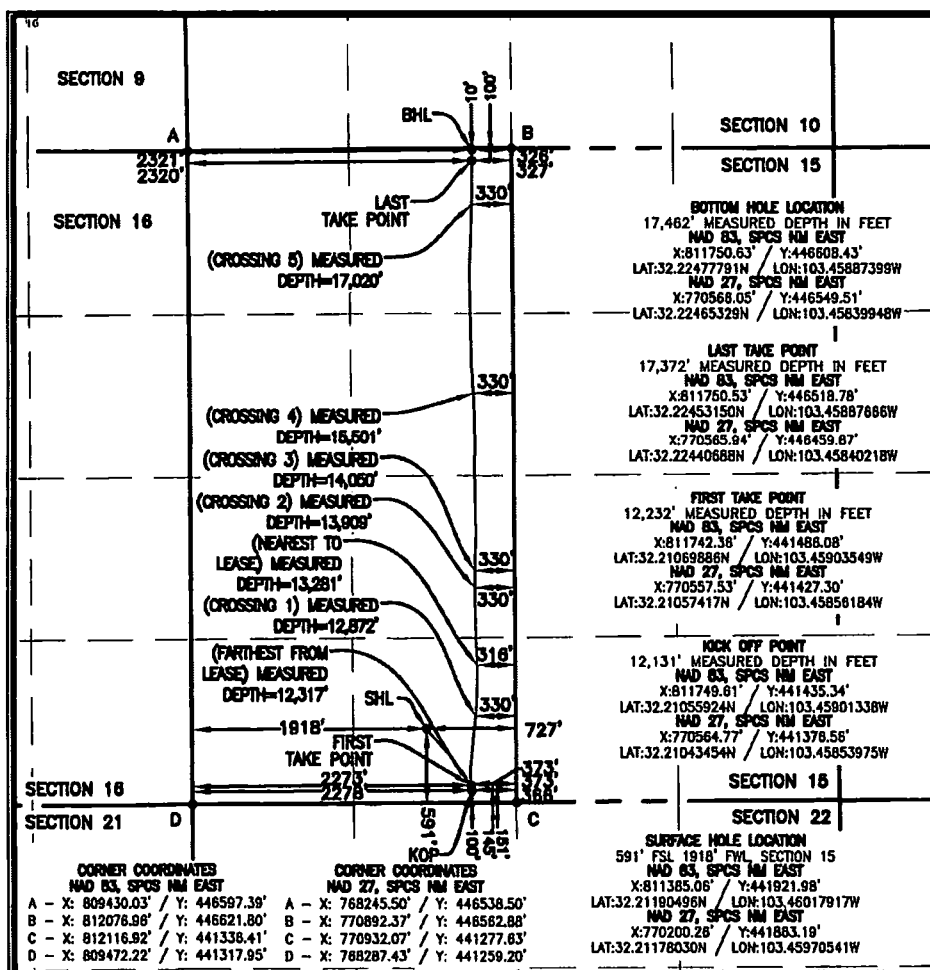
UL or lot no.	Section	Township	Range	Lot Idn	Feet from the	North/South line	Feet from the	East/West line	County
N	15	T24S	R34E		591	SOUTH	1918	WEST	LEA

<sup>11</sup> Bottom Hole Location If Different From Surface

UL or lot no.	Section	Township	Range	Lot Idn	Feet from the	North/South line	Feet from the	East/West line	County
C	15	T24S	R34E		10	NORTH	2321	WEST	LEA

<sup>12</sup> Dedicated Acres	<sup>13</sup> Joint or Infill	<sup>14</sup> Consolidation Code	<sup>15</sup> Order No.
320.0			

No allowable will be assigned to this completion until all interests have been consolidated or a non-standard unit has been approved by the division.



<sup>17</sup> OPERATOR CERTIFICATION

I hereby certify that the information contained herein is true and complete to the best of my knowledge and belief, and that this organization either owns a working interest or unleased mineral interest in the land including the proposed bottom hole location or has a right to drill this well at this location pursuant to a contract with an owner of such a mineral or working interest, or to a voluntary pooling agreement or a compulsory pooling order heretofore entered by the division.

Signature: *Adrian Covarrubias* Date: 12/23/2019

Printed Name: Adrian Covarrubias

E-mail Address:

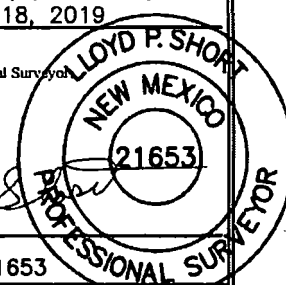
<sup>18</sup> SURVEYOR CERTIFICATION

I hereby certify that the well surface location shown on this plat was plotted from field notes of the as-staked surveys made by me or under my supervision, and that the same is true and correct to the best of my belief. Data used for underground measurements were provided by others for reference only and does not constitute field measurements performed by R-Squared Global. DECEMBER 18, 2019

Date of Survey

Signature and Seal of Professional Surveyor

Certificate Number  
LLOYD P. SHORT 21653



DISTANCES/AREAS RELATIVE TO NAD83 COMBINED SCALE FACTOR: 0.999992888  
CONVERGENCES 00°27'56.18612" NOTE: ALL DIMENSIONS IN U.S. FEET

2	12/18/2019	DEF
REV.	DATE	BY

SHEET 1 OF 1  
R3799\_010