

District I
1625 N. French Dr., Hobbs, NM 88240
Phone: (575) 393-6161 Fax: (575) 393-0720
District II
811 S. First St., Artesia, NM 88210
Phone: (575) 748-1283 Fax: (575) 748-9720
District III
1000 Rio Brazos Road, Aztec, NM 87410
Phone: (505) 334-6178 Fax: (505) 334-6170
District IV
1220 S. St. Francis Dr., Santa Fe, NM 87505
Phone: (505) 476-3460 Fax: (505) 476-3462

State of New Mexico
Energy, Minerals & Natural Resources
HOBBS OCD
OIL CONSERVATION DIVISION
1220 South St. Francis Dr.
Santa Fe, NM 87505
DEC 30 2019

Form C-102
Revised August 1, 2011
Submit one copy to appropriate
District Office

RECEIVED

☐ AMENDED REPORT

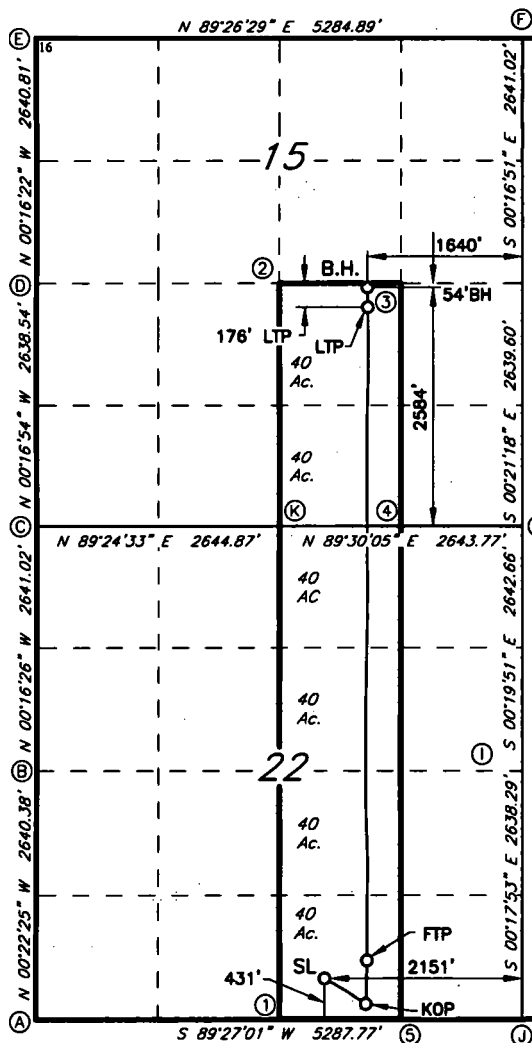
WELL LOCATION AND ACREAGE DEDICATION PLAT

¹ API Number 30-025-45770		² Pool Code 96603		³ Pool Name TRISTE DRAW: BONE SPRING	
⁴ Property Code 325016		⁵ Property Name GHOST RIDER 22-15 FEDERAL COM			⁶ Well Number 203H
⁷ OGRID NO. 873		⁸ Operator Name APACHE CORPORATION			⁹ Elevation 3597'

¹⁰ Surface Location									
UL or lot no.	Section	Township	Range	Lot Idn	Feet from the	North/South line	Feet From the	East/West line	County
0	22	24S	32E		431	SOUTH	2151	EAST	LEA

¹¹ Bottom Hole Location If Different From Surface									
UL or lot no.	Section	Township	Range	Lot Idn	Feet from the	North/South line	Feet from the	East/West line	County
J	15	24S	32E		2584	SOUTH	1640	EAST	LEA
¹² Dedicated Acres 240		¹³ Joint or Infill		¹⁴ Consolidation Code		¹⁵ Order No.			

No allowable will be assigned to this completion until all interest have been consolidated or a non-standard unit has been approved by the division.



GEODETIC DATA
NAD 83 GRID - NM EAST

SURFACE LOCATION (SL)
N: 436049.4 - E: 749329.9
LAT: 32.1969893° N
LONG: 103.6609294° W

KICK OFF POINT (KOP)
159' FSL - 1703' FEL (SEC. 22)
N: 435781.8 - E: 749779.2
LAT: 32.1962460° N
LONG: 103.6594825° W
MD: 10100.0 - TVD: 10067.0

FIRST TAKE POINT (FTP)
712' FSL - 1688' FEL (SEC. 22)
N: 436334.9 - E: 749791.2
LAT: 32.1977861° N
LONG: 103.6594325° W
MD: 10924.0 - TVD: 10574.4

LAST TAKE POINT (LTP)
2462' FSL - 1640' FEL (SEC. 15)
N: 443366.3 - E: 749799.0
LAT: 32.2170935° N
LONG: 103.6592647° W
MD: 17957.0 - TVD: 10578.7

BOTTOM HOLE (BH)
N: 443488.2 - E: 749797.6
LAT: 32.2174286° N
LONG: 103.6592666° W
MD: 18079.0 - TVD: 10574.6

CORNER DATA
NAD 83 GRID - NM EAST

A: FOUND BRASS CAP "1916"
N: 435588.7 - E: 746196.0

B: FOUND BRASS CAP "1916"
N: 438228.5 - E: 746178.8

C: FOUND BRASS CAP "1916"
N: 440869.0 - E: 746166.1

D: FOUND BRASS CAP "1916"
N: 443506.9 - E: 746153.2

E: FOUND BRASS CAP "1916"
N: 446147.2 - E: 746140.6

F: CALCULATED CORNER
N: 446198.7 - E: 751424.1

G: FOUND BRASS CAP "1916"
N: 443558.2 - E: 751437.1

H: FOUND BRASS CAP "1916"
N: 440919.2 - E: 751453.4

I: FOUND BRASS CAP "1916"
N: 438277.2 - E: 751468.7

J: FOUND BRASS CAP "1916"
N: 435639.5 - E: 751482.4

K: FOUND BRASS CAP "1916"
N: 440896.2 - E: 748810.3

CALCULATED POINTS
1: N: 435614.1 - E: 748839.2
2: N: 443532.6 - E: 748796.3
3: N: 443545.4 - E: 750117.6
4: N: 440907.7 - E: 750131.9
5: N: 435626.8 - E: 750160.8

17 OPERATOR CERTIFICATION
I hereby certify that the information contained herein is true and complete to the best of my knowledge and belief, and that this organization either owns a working interest or unleased mineral interest in the land including the proposed bottom hole location or has a right to drill this well at this location pursuant to a contract with an owner of such a mineral or working interest, or to a voluntary pooling agreement or a compulsory pooling order heretofore entered by the division.

Reesa Fisher 12/17/19
Signature Date
REESEA FISHER
Printed Name
Reesa.Fisher@apachecorp.com
E-mail Address

18 SURVEYOR CERTIFICATION
I hereby certify that the well location shown on this plat was plotted from field notes of actual surveys made by me or under my supervision, and that the same is true and correct to the best of my belief.

5-29-2017
Date of Survey

Signature and Seal of Professional Surveyor

10034
Certificate Number

REV. 10/31/2019 - KOP/FTP/LTP

Job No.: LS1805673AD1