

District I  
1625 N. French Dr., Hobbs, NM 88240  
Phone: (575) 393-6161 Fax: (575) 393-0720  
District II  
811 S. First St., Artesia, NM 88210  
Phone: (575) 748-1283 Fax: (575) 748-9720  
District III  
1000 Rio Brazos Road, Aztec, NM 87410  
Phone: (505) 334-6178 Fax: (505) 334-6170  
District IV  
1220 S. St. Francis Dr., Santa Fe, NM 87505  
Phone: (505) 476-3460 Fax: (505) 476-3462

State of New Mexico **HOBBS OCD**  
Energy, Minerals & Natural Resources  
Department **JAN 02 2020**  
OIL CONSERVATION DIVISION  
1220 South St. Francis Dr. **RECEIVED**  
Santa Fe, NM 87505

FORM C-102  
Revised August 1, 2011  
Submit one copy to appropriate  
District Office

☐ AMENDED REPORT

**WELL LOCATION AND ACREAGE DEDICATION PLAT**

<sup>1</sup> API Number 30-025-46675		<sup>2</sup> Pool Code 2220	<sup>3</sup> Pool Name ANTELOPE RIDGE; WOLFCAMP
<sup>4</sup> Property Code 326773	<sup>5</sup> Property Name THE CONTEST FED COM		<sup>6</sup> Well Number 132H
<sup>7</sup> GRID No. 372043	<sup>8</sup> Operator Name TAP ROCK OPERATING, LLC.		<sup>9</sup> Elevation 3563'

**<sup>10</sup>Surface Location**

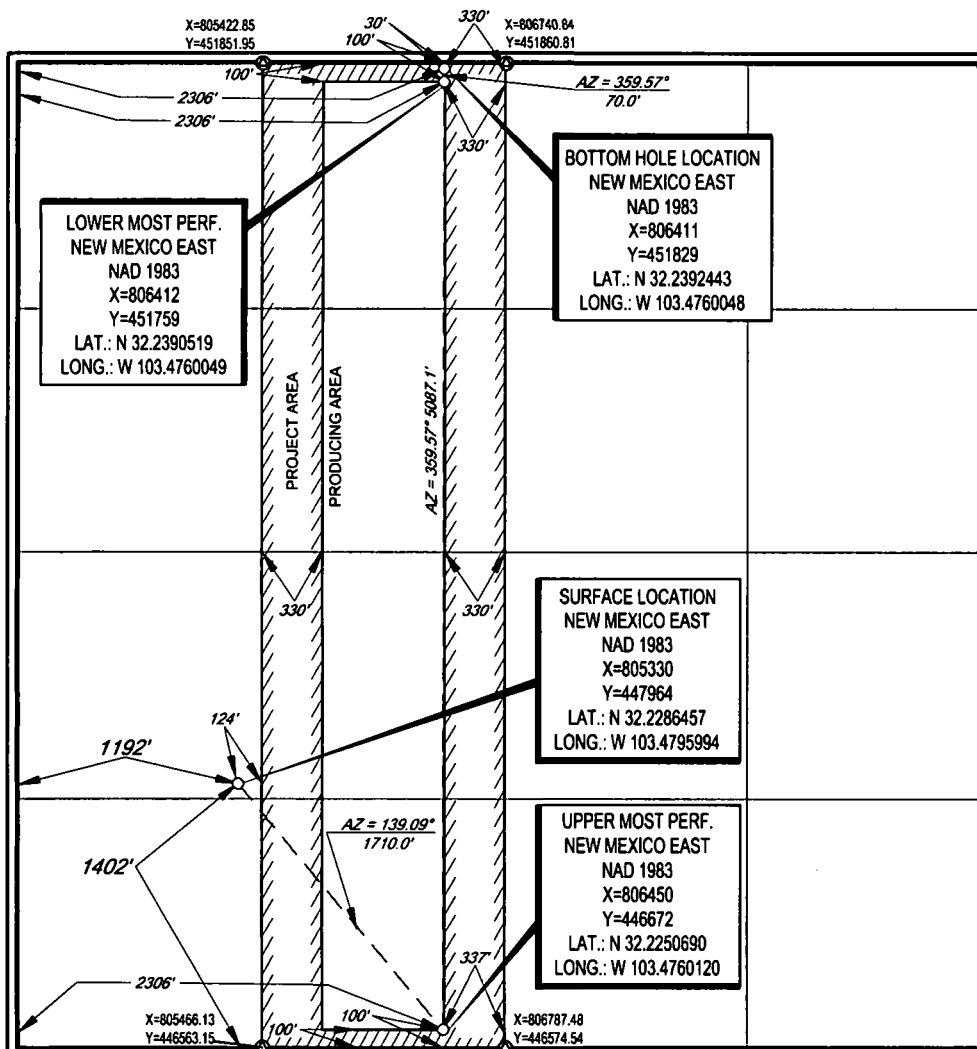
UL or lot no. L	Section 9	Township 24-S	Range 34-E	Lot Idn -	Feet from the 1402'	North/South line SOUTH	Feet from the 1192'	East/West line WEST	County LEA
--------------------	--------------	------------------	---------------	--------------	------------------------	---------------------------	------------------------	------------------------	---------------

**<sup>11</sup>Bottom Hole Location If Different From Surface**

UL or lot no. C	Section 9	Township 24-S	Range 34-E	Lot Idn -	Feet from the 30'	North/South line NORTH	Feet from the 2306'	East/West line WEST	County LEA
--------------------	--------------	------------------	---------------	--------------	----------------------	---------------------------	------------------------	------------------------	---------------

<sup>12</sup> Dedicated Acres 160	<sup>13</sup> Joint or Infill	<sup>14</sup> Consolidation Code	<sup>15</sup> Order No.
--------------------------------------	-------------------------------	----------------------------------	-------------------------

No allowable will be assigned to this completion until all interests have been consolidated or a non-standard unit has been approved by the division.



<b><sup>17</sup>OPERATOR CERTIFICATION</b>	
I hereby certify that the information contained herein is true and complete to the best of my knowledge and belief, and that this organization either owns a working interest or unleased mineral interest in the land including the proposed bottom hole location or has a right to drill this well at this location pursuant to a contract with an owner of such a mineral or working interest, or to a voluntary pooling agreement or a compulsory pooling order heretofore entered by the division.	
Signature <i>Cory Walk</i>	Date 07-11-19
Printed Name Cory Walk	
E-mail Address cory@permitswest.com	
<b><sup>18</sup>SURVEYOR CERTIFICATION</b>	
I hereby certify that the well location shown on this plat was plotted from field notes of actual surveys made by me or under my supervision, and that the same is true to the best of my belief.	
Date of Survey 05/14/2019	
Signature and Seal of Professional Surveyor <i>[Signature]</i>	
Certificate Number 11401	