

District I
1625 N. French Dr., Hobbs, NM 88240
Phone: (575) 393-6161 Fax: (575) 393-0720
District II
811 S. First St., Artesia, NM 88210
Phone: (575) 748-1283 Fax: (575) 748-9720
District III
1000 Rio Brazos Road, Aztec, NM 87410
Phone: (505) 334-6178 Fax: (505) 334-6170
District IV
1220 S. St. Francis Dr., Santa Fe, NM 87505
Phone: (505) 476-3460 Fax: (505) 476-3462

State of New Mexico
Energy, Minerals & Natural Resources Department
OIL CONSERVATION DIVISION
1220 South St. Francis Dr.
Santa Fe, NM 87505

Form C-102
Revised August 1, 2011
Submit one copy to appropriate
District Office

☐ AMENDED REPORT

WELL LOCATION AND ACREAGE DEDICATION PLAT

1 API Number 30-25-42560		2 Pool Code		3 Pool Name	
4 Property Code		5 Property Name ZIA HILLS 25E FEDERAL COM		6 Well Number 401H	
7 OGRID No.		8 Operator Name ConocoPhillips Company		9 Elevation 3133.6'	

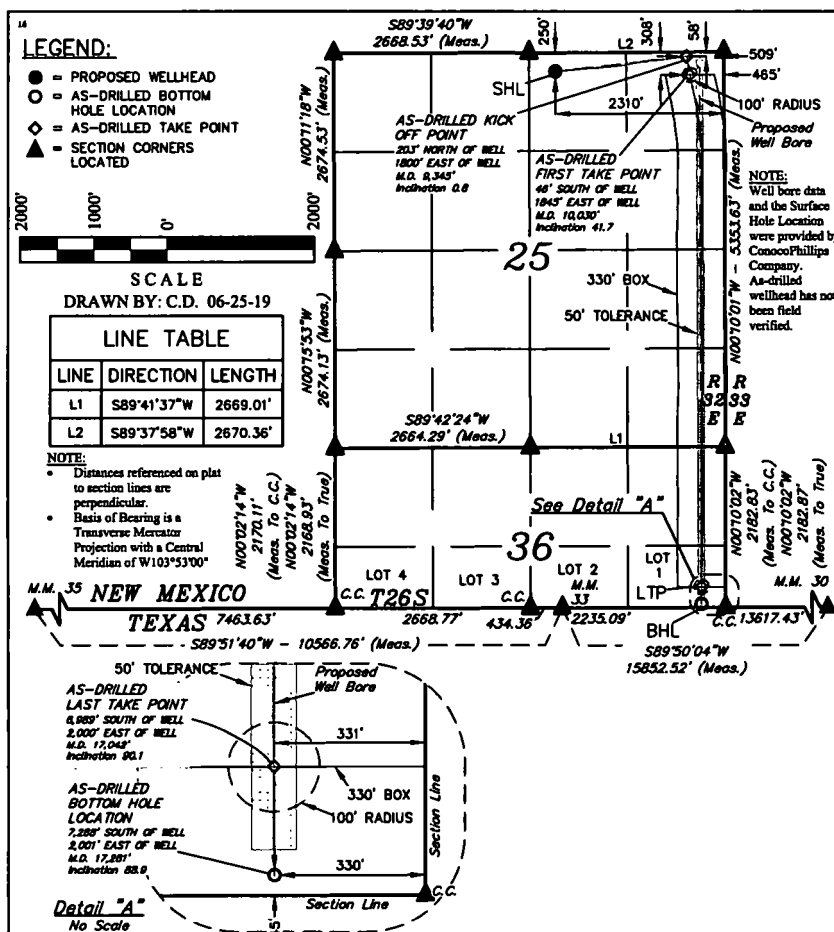
"Surface Location

UL or lot no.	Section	Township	Range	Lot Idn	Feet from the	North/South line	Feet from the	East/West line	County
B	25	26S	32E		250	NORTH	2310	EAST	LEA

"Bottom Hole Location If Different From Surface

UL or lot no.	Section	Township	Range	Lot Idn	Feet from the	North/South line	Feet from the	East/West line	County
1	36	26S	32E		45	SOUTH	330	EAST	LEA
10 Dedicated Acres 264.99		11 Joint or Infill		12 Consolidation Code		13 Order No.			

No allowable will be assigned to this completion until all interests have been consolidated or a non-standard unit has been approved by the division.



"OPERATOR
CERTIFICATION

I hereby certify that the information contained herein is true and complete to the best of my knowledge and belief, and that this organization either owns a working interest or unleased mineral interest in the land including the proposed bottom hole location or has a right to drill this well at this location pursuant to a contract with an owner of such a mineral or working interest, or to a voluntary pooling agreement or a compulsory pooling order heretofore entered by the division.

Signature _____ Date _____

Printed Name _____

E-mail Address _____

"SURVEYOR
CERTIFICATION

I hereby certify that the well location shown on this plat was plotted from field notes of actual surveys made by me or under my supervision, and that the same is true and correct to the best of my belief.

January 30, 2014

Date of Survey
Signature and Seal of Professional Surveyor:



Certificate Number:

NAD 83 (SURFACE LOCATION)	
LATITUDE = 32°01'12.86" (32.020239°)	
LONGITUDE = 103°37'38.20" (103.627278°)	
NAD 27 (SURFACE LOCATION)	
LATITUDE = 32°01'12.41" (32.020114°)	
LONGITUDE = 103°37'36.51" (103.626808°)	
STATE PLANE NAD 83 (N.M. EAST)	
N: 371816.31' E: 760160.89'	
STATE PLANE NAD 27 (N.M. EAST)	
N: 371759.31' E: 761897.34'	

NAD 83 (AS-DRILLED KICK OFF POINT)	
LATITUDE = 32°01'14.83" (32.020785°)	
LONGITUDE = 103°37'17.28" (103.621467°)	
NAD 27 (AS-DRILLED KICK OFF POINT)	
LATITUDE = 32°01'14.38" (32.020660°)	
LONGITUDE = 103°37'15.60" (103.621000°)	
STATE PLANE NAD 83 (N.M. EAST)	
N: 372027.20' E: 761960.19'	
STATE PLANE NAD 27 (N.M. EAST)	
N: 371970.19' E: 762072.64'	

APPROXIMATE WELL BORE DISTANCE FROM FTP TO LTP	
Section 25	5,058.69'
Section 36	1,898.31'
TOTAL	6,957.00'

NAD 83 (AS-DRILLED FTP)	
LATITUDE = 32°01'12.36" (32.020100°)	
LONGITUDE = 103°37'16.77" (103.621324°)	
NAD 27 (AS-DRILLED FTP)	
LATITUDE = 32°01'11.91" (32.019974°)	
LONGITUDE = 103°37'15.08" (103.620857°)	
STATE PLANE NAD 83 (N.M. EAST)	
N: 371778.11' E: 762006.15'	
STATE PLANE NAD 27 (N.M. EAST)	
N: 371721.12' E: 762018.58'	

NAD 83 (AS-DRILLED LTP)	
LATITUDE = 32°00'03.66" (32.001017°)	
LONGITUDE = 103°37'15.17" (103.620881°)	
NAD 27 (AS-DRILLED LTP)	
LATITUDE = 32°00'03.21" (32.000892°)	
LONGITUDE = 103°37'13.49" (103.620414°)	
STATE PLANE NAD 83 (N.M. EAST)	
N: 364837.16' E: 762189.32'	
STATE PLANE NAD 27 (N.M. EAST)	
N: 364780.34' E: 762100.44'	

NAD 83 (AS-DRILLED BHL)	
LATITUDE = 32°00'01.30" (32.000360°)	
LONGITUDE = 103°37'15.17" (103.620879°)	
NAD 27 (AS-DRILLED BHL)	
LATITUDE = 32°00'00.84" (32.000235°)	
LONGITUDE = 103°37'13.49" (103.620413°)	
STATE PLANE NAD 83 (N.M. EAST)	
N: 364598.19' E: 762191.42'	
STATE PLANE NAD 27 (N.M. EAST)	
N: 364541.37' E: 762100.52'	