

## DISTRICT I

1628 N. FRANKLIN DR., HOBBS, NM 88240

Phone: (505) 822-6181 Fax: (505) 822-6182

## DISTRICT II

811 E. FIRST ST., ALBUQUERQUE, NM 87102

Phone: (505) 748-1283 Fax: (505) 748-0782

## DISTRICT III

1000 RIO BRAZOS RD., ALBUQUERQUE, NM 87102

Phone: (505) 834-6176 Fax: (505) 834-6177

## DISTRICT IV

1220 S. ST. FRANCIS DR., SANTA FE, NM 87505

Phone: (505) 476-3480 Fax: (505) 476-3482

State of New Mexico  
Energy, Minerals & Natural Resources Department  
CONSERVATION DIVISION  
1220 SOUTH ST. FRANCIS DR.  
Santa Fe, New Mexico 87505

Form C-102

Revised August 1, 2011

Submit one copy to appropriate  
District Office☐ AMENDED REPORT

## WELL LOCATION AND ACREAGE DEDICATION PLAT

API Number <b>30-025-46152</b>	Pool Code <b>98117</b>	Pool Name <b>WC-025 G-09 S263504N;WOLFCAMP</b>
Property Code <b>325736</b>	Property Name <b>ARENA ROJA FED UNIT 15-10</b>	Well Number <b>3H</b>
OGHD No. <b>6137</b>	Operator Name <b>DEVON ENERGY PRODUCTION COMPANY, L.P.</b>	Elevation <b>3086.0'</b>

## Surface Location

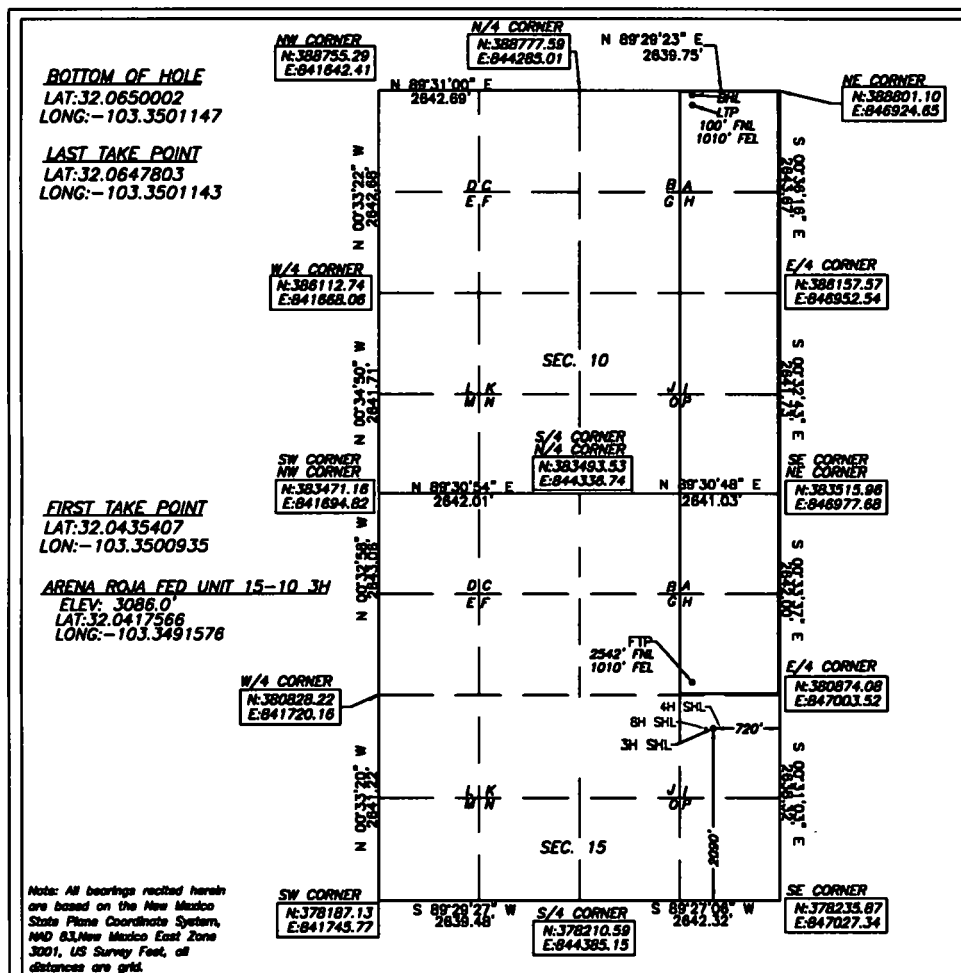
UL or lot No.	Section	Township	Range	Lot Idn	Feet from the	North/South line	Feet from the	East/West line	County
<b>I</b>	<b>15</b>	<b>26-S</b>	<b>35-E</b>		<b>2090</b>	<b>SOUTH</b>	<b>720</b>	<b>EAST</b>	<b>LEA</b>

## Bottom Hole Location If Different From Surface

UL or lot No.	Section	Township	Range	Lot Idn	Feet from the	North/South line	Feet from the	East/West line	County
<b>A</b>	<b>10</b>	<b>26-S</b>	<b>35-E</b>		<b>38</b>	<b>NORTH</b>	<b>986</b>	<b>EAST</b>	<b>LEA</b>

Dedicated Acres	Joint or Infill	Consolidation Code	Order No.
<b>240</b>			

NO ALLOWABLE WILL BE ASSIGNED TO THIS COMPLETION UNTIL ALL INTERESTS HAVE BEEN CONSOLIDATED  
OR A NON-STANDARD UNIT HAS BEEN APPROVED BY THE DIVISION



## OPERATOR CERTIFICATION

I hereby certify that the information herein is true and complete to the best of my knowledge and belief, and that this organization either owns a working interest or unleased mineral interest in the land including the proposed bottom hole location or has a right to drill this well at this location pursuant to a contract with an owner of such mineral or working interest, or to a voluntary pooling agreement or a compulsory pooling order heretofore entered by the division.

Rebecca Deal 12/19/2019  
Signature Date

Rebecca Deal, Regulatory Analyst  
Printed Name

rebecca.deal@dvn.com  
E-mail Address

## SURVEYOR CERTIFICATION

I hereby certify that the well location shown on this plat was plotted from field notes of actual surveys made by me or under my supervision, and that the same is true and correct to the best of my belief.

07/2018

Date of Survey

Signature &amp; Seal of Professional Surveyor



09/5/18

Certificate No. 22404 B.L. LAMAN

W.O. #

DRAWN BY: CM